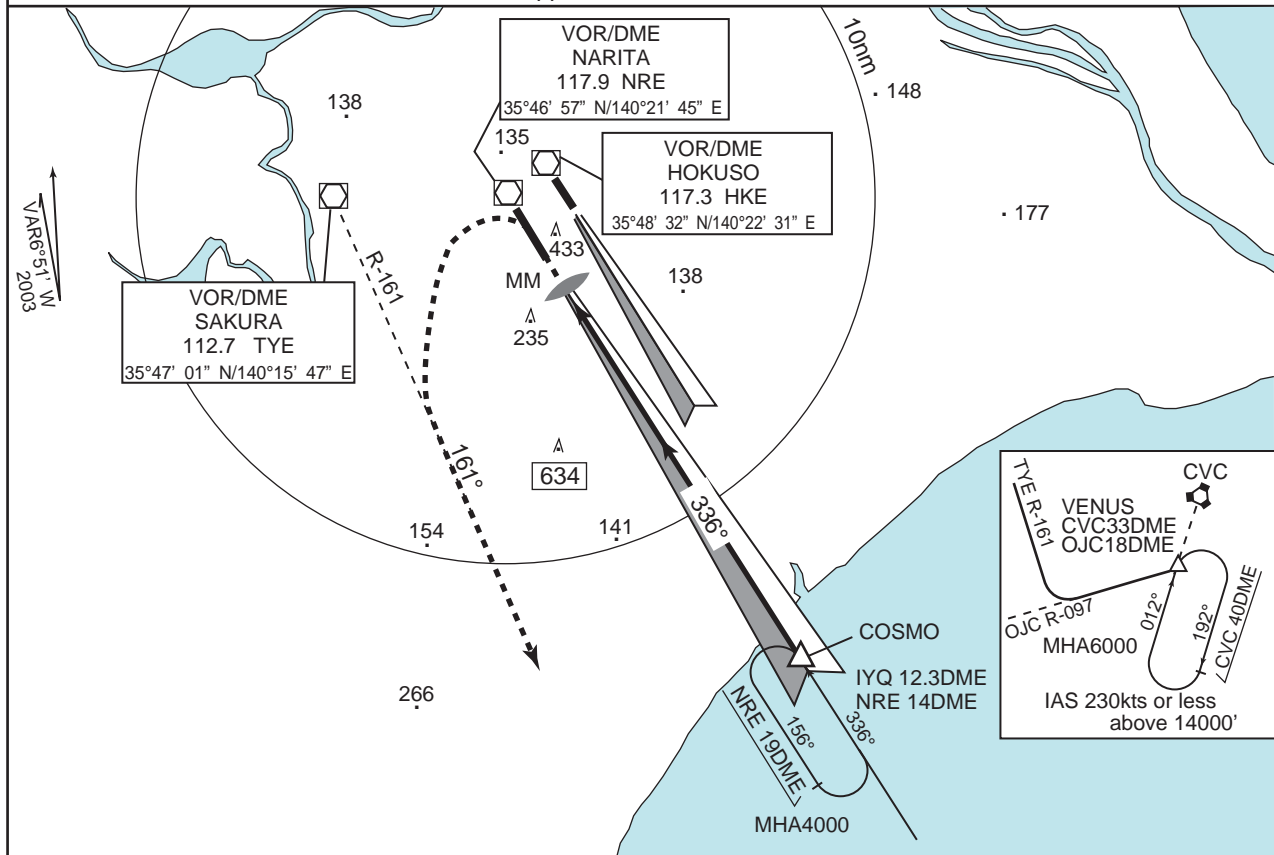
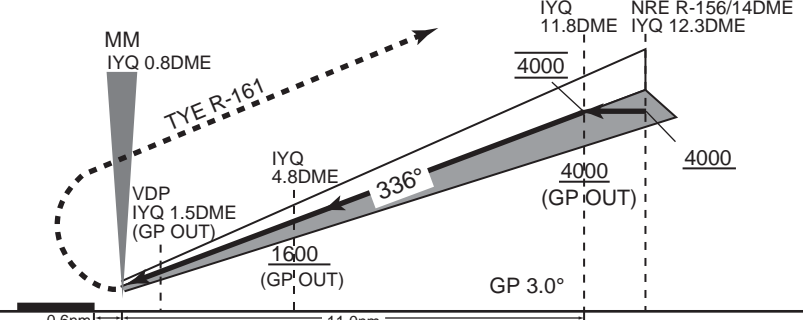


NARITA APP 124.4 - 127.7 - 261.2	ILS - LLZ 111.9 IYQ ILS - GP 331.1 ILS - DME CH-56X	NARITA TOWER 118.2 - 122.7 - 126.2 236.8 - 121.95G	RADAR AVAILABLE ATIS 128.25
-------------------------------------	--	--	--------------------------------

Simultaneous approach authorized with RWY34R



ILS REFERENCE DATUM 59'



MISSED APPROACH

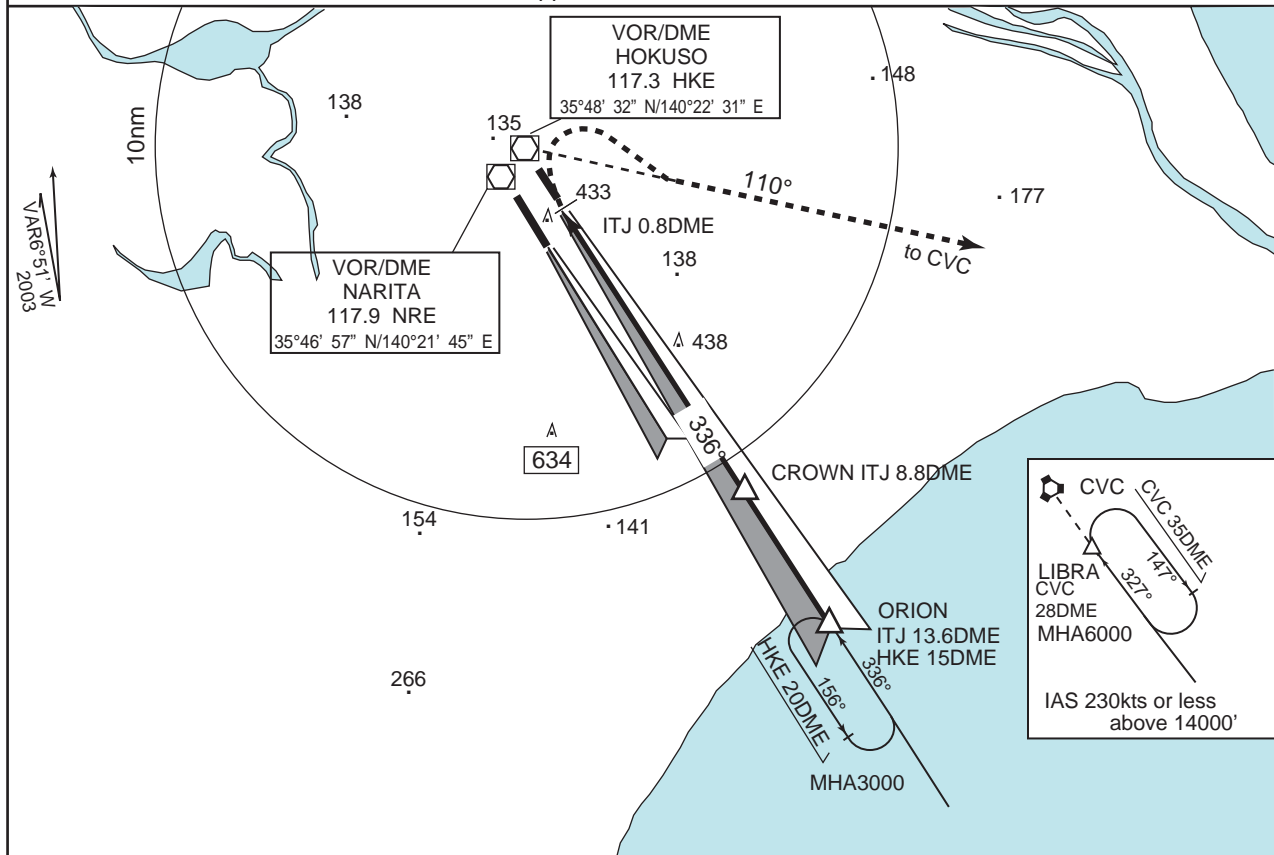
Climb on HDG 336° to 600FT, turn left to intercept and proceed via TYE R-161, then via OJC R-097 to VENUS and hold at 6000FT, Contact NARITA APP.

☉ Turn must not be commenced before MM.

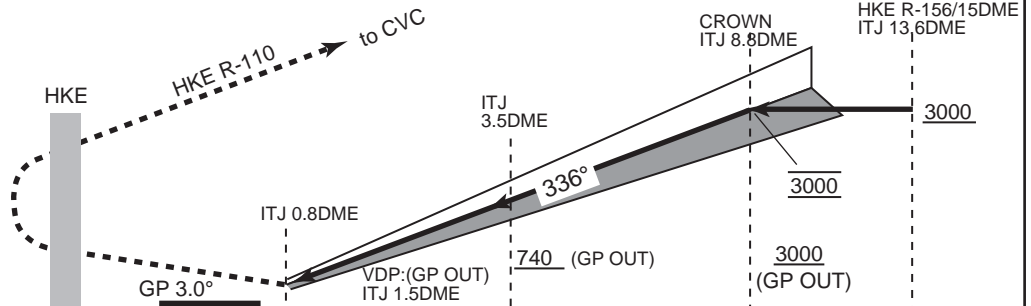
	MINIMA		FIELD ELEV 135ft THR ELEV 139ft		
	STA TO RWY34L				
	ILS		(GP OUT)		CIRCLING
	DA 339'		MDA 580'		
	RTZL & RCLL AVBL	RTZL and/or RCLL OUT	PALS OUT	PALS AVBL	PALS OUT
A					MDA-VIS
B	RVR 800m		RVR 1200m	RVR 1400m	740' -1600m
C	VIS 800m		VIS 1200m	VIS 1700m	740' -2400m
D			RVR 1400m	VIS 2300m	740' -3200m
			VIS 1400m		

NARITA APP 124.4 - 127.7 - 261.2	ILS - LLZ 110.9 ITJ ILS - GP 330.8 ILS - DME CH-46X	NARITA TOWER 118.35 - 122.7 - 126.2 236.8 - 121.95G	RADAR AVAILABLE ATIS 128.25
-------------------------------------	--	---	--------------------------------

Simultaneous approach authorized with RWY34L



ILS REFERENCE DATUM 55'



MISSED APPROACH

At DA, turn right climb via HKE R-110 to CVC VORTAC, then via CVC R-147 to LIBRA and hold at 6000FT. Contact NARITA APP.

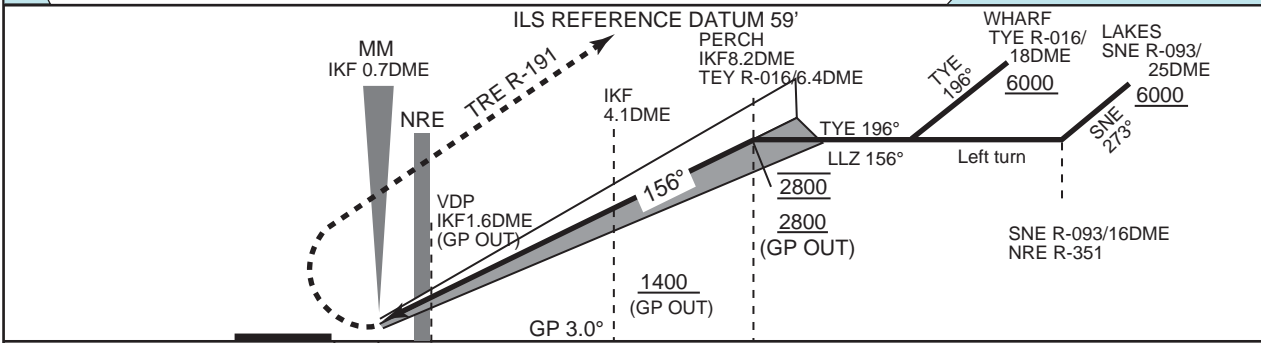
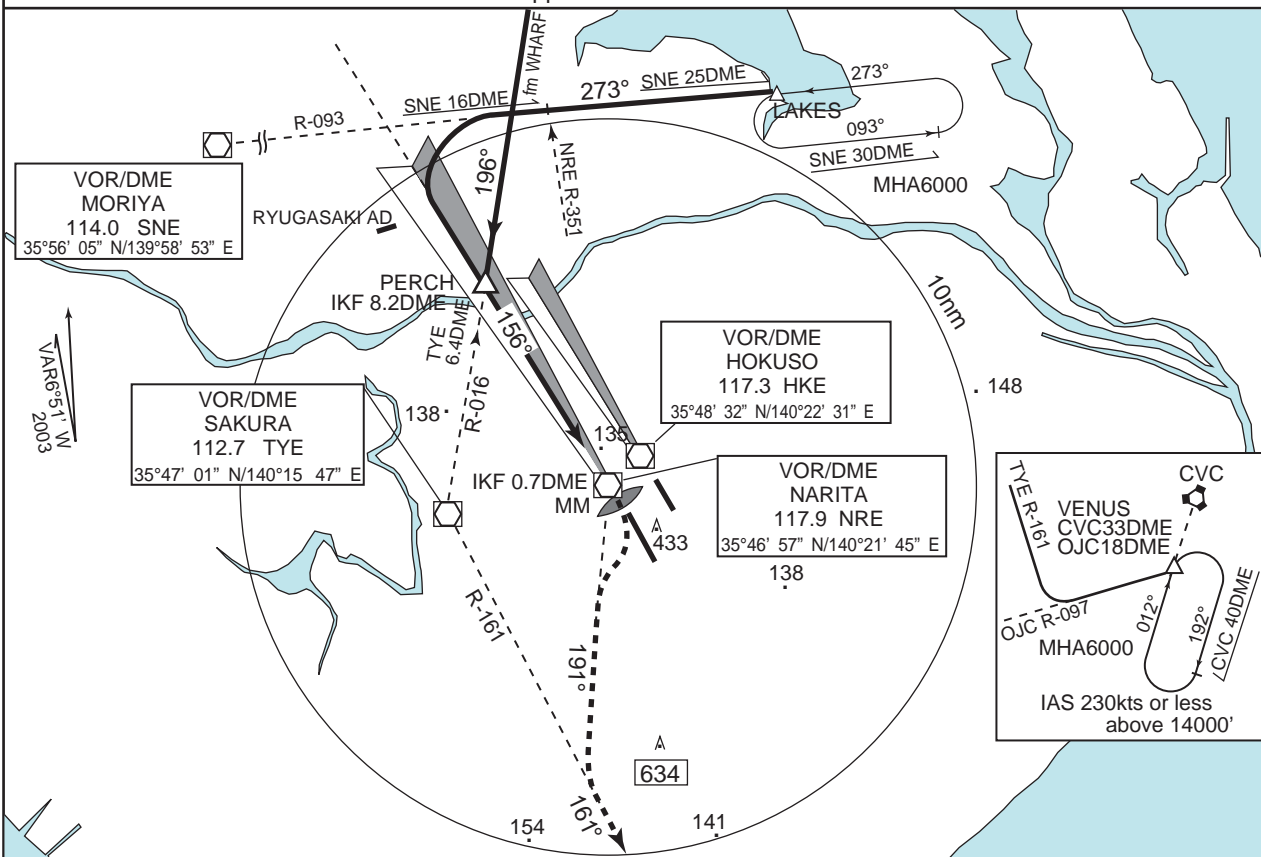
	MINIMA		FIELD ELEV 135ft THR ELEV 141ft					
	STA TO RWY34R				CIRCLING			
	ILS (GP OUT)		MDA 580'					
	DA 391'				MDA-VIS			
	RTZL & RCLL AVBL	RTZL and/or RCLL OUT	PALS OUT	PALS AVBL		PALS OUT		
A	RVR 1200m VIS 1200m		RVR 1400m VIS 1400m	RVR 1200m VIS 1200m	RVR 1400m VIS 1400m	740' -1600m		
B			RVR 1600m VIS 1600m		RVR 1600m VIS 1600m	VIS 1700m	740' -2400m	
C								
D							VIS 2300m	740' -3200m

RJAA / NARITA INTL

ILS RWY16R (CAT-I)

NARITA APP 124.4 - 127.7 - 261.2	ILS - LLZ 111.5 IKF ILS - GP 332.9 ILS - DME CH-52X	NARITA TOWER 118.2 - 122.7 - 126.2 236.8 - 121.95G	RADAR AVAILABLE ATIS 128.25
-------------------------------------	--	--	--------------------------------

Simultaneous approach authorized with RWY34R



MISSED APPROACH

Climb on HDG 156° to 800FT, turn right, climb via NRE R-19 to intercept and proceed via TYE R-161, then via OJC R-097 to VENUS hold at 6000FT, Contact NARITA APP.

☉ Turn must not be commenced before MM.

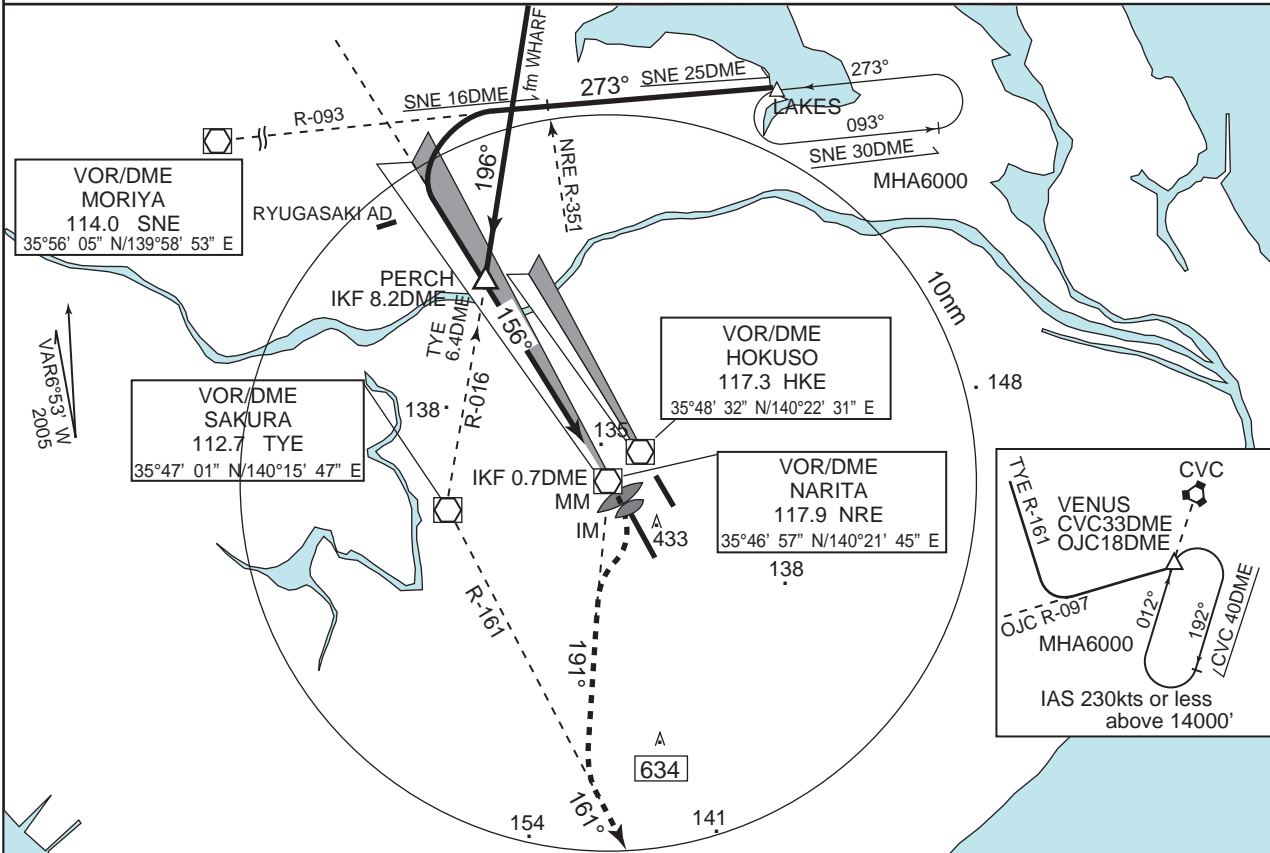
	MINIMA		FIELD ELEV 135ft THR ELEV 130ft			
	STA TO RWY16R				CIRCLING	
	ILS (GP OUT)		MDA 580'			
	DA 330'				MDA-VIS	
	RTZL & RCLL AVBL	RTZL and/or RCLL OUT	PALS OUT	PALS AVBL		PALS OUT
A					RVR 1400m VIS 1400m	740' -1600m
B	RVR 550m	RVR 800m	RVR 1200m	RVR 1200m	VIS 1700m	740' -2400m
C	VIS 800m	VIS 800m	VIS 1200m	VIS 1200m	VIS 2300m	740' -3200m
D						

RJAA / NARITA INTL

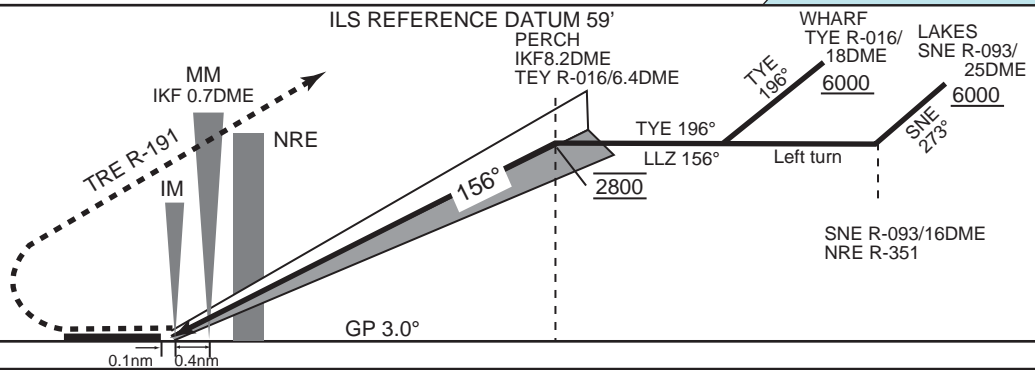
ILS RWY16R (CAT-II,III)

NARITA APP 124.4 - 127.7 - 261.2	ILS - LLZ 111.5 IKF ILS - GP 332.9 ILS - DME CH-52X	NARITA TOWER 118.2 - 122.7 - 126.2 236.8 - 121.95G	RADAR AVAILABLE ATIS 128.25
-------------------------------------	--	--	--------------------------------

Simultaneous approach authorized with RWY34R



ILS REFERENCE DATUM 59'



MISSED APPROACH	FIELD ELEV 135ft THR ELEV 130ft
-----------------	------------------------------------

	CAT III b	CAT III a	CAT II
	-	-	DH 100' RA 101'
A	RVR 100m	RVR 200m	RVR 350m
B			
C			
D			

MISSED APPROACH
Climb on HDG 156° to 800FT, turn right, climb via NRE R-191 to intercept and proceed via Tye R-161, turn via OJC R-197 to VENUS and hold at 6000FT. Contact NARITA APP.

DH is referenced to the threshold elevation.
Remarks : DH150' -RA154' for the operations on operational evaluation phases prior to Category II operations.

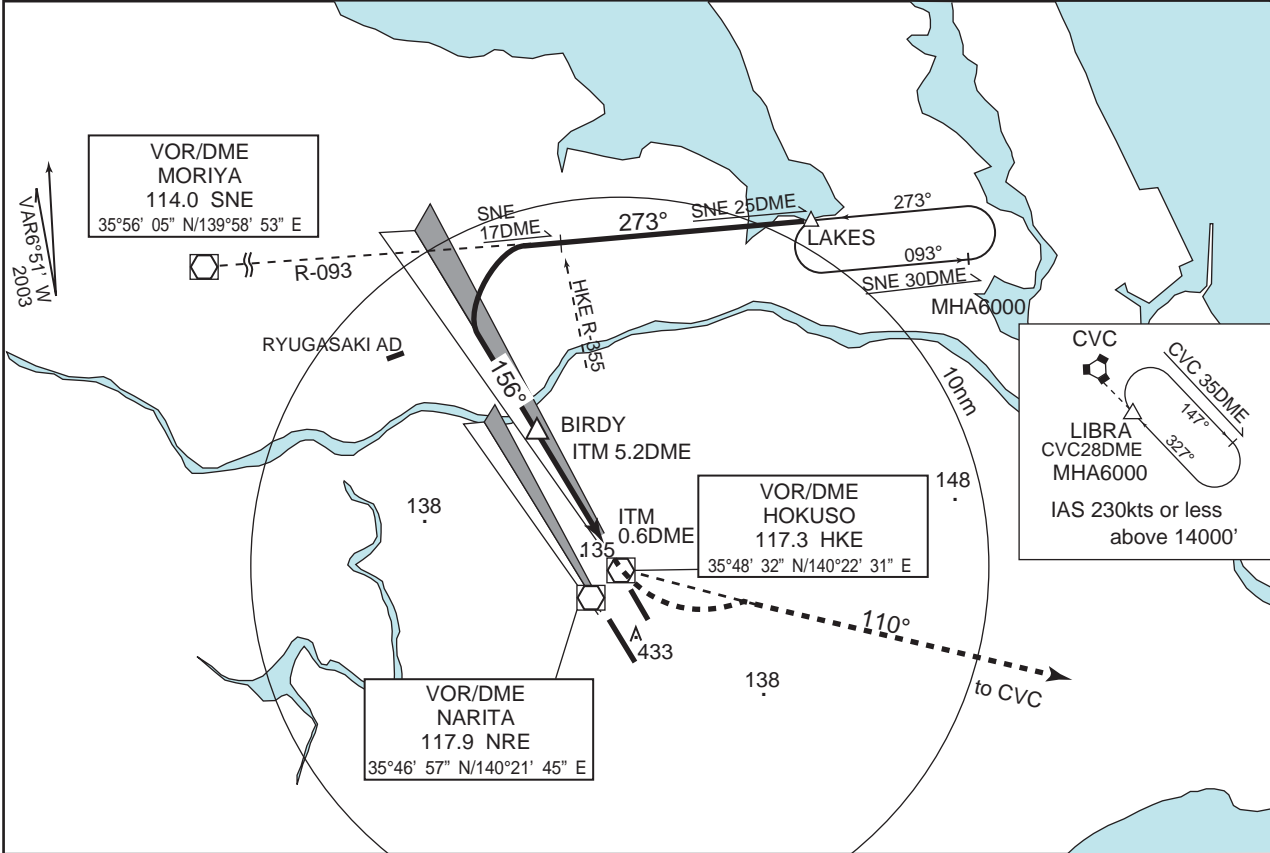
© Turn must not be commenced before IM.

RJAA / NARITA INTL

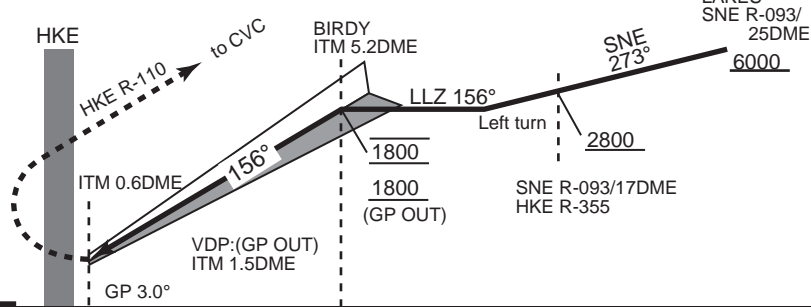
ILS RWY16L

NARITA APP 124.4 - 127.7 - 261.2	ILS - LLZ 110.7 ITM ILS - GP 330.2 ILS - DME CH-44X	NARITA TOWER 118.35 - 122.7 - 126.2 236.8 - 121.95G	RADAR AVAILABLE ATIS 128.25
-------------------------------------	--	---	--------------------------------

Simultaneous approach authorized with RWY16R



ILS REFERENCE DATUM 54'



MISSED APPROACH

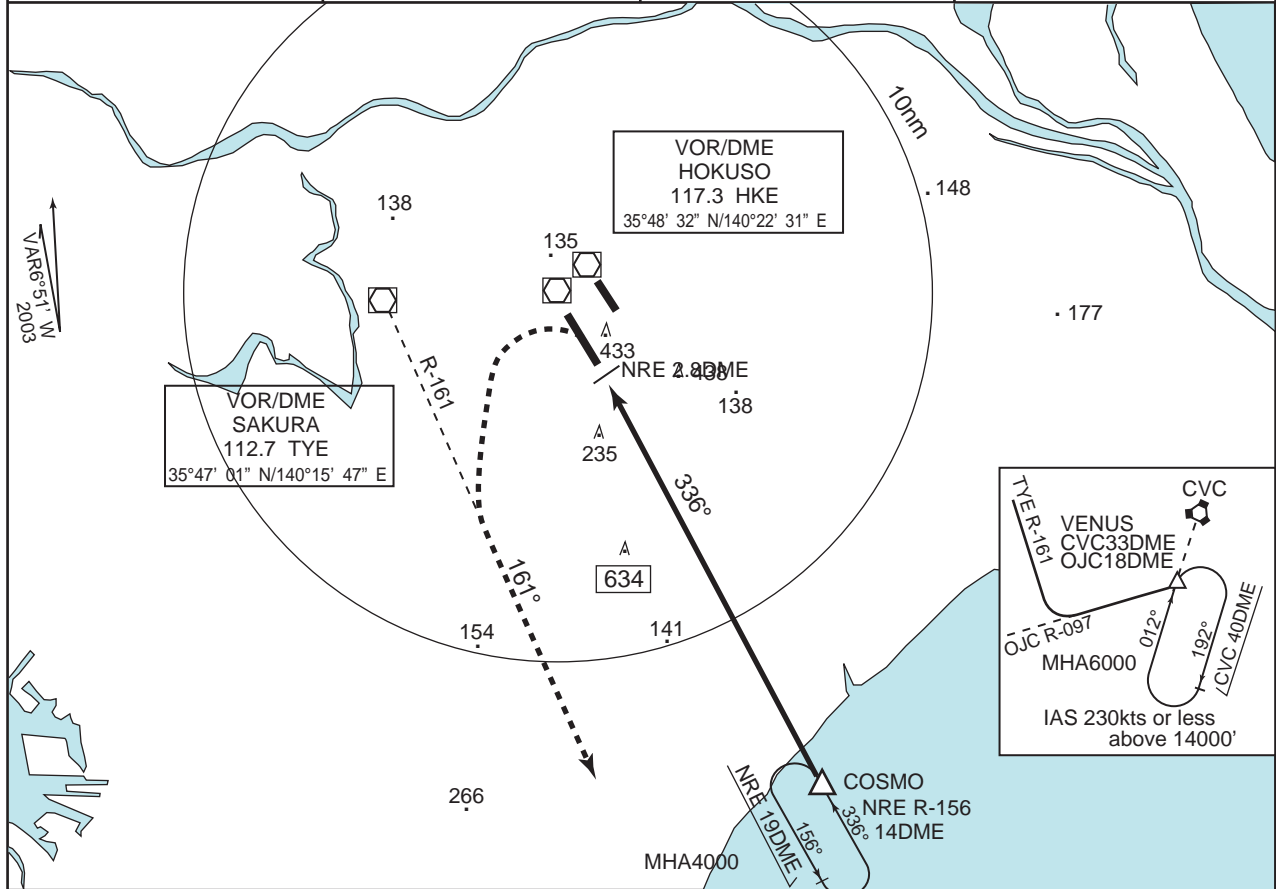
At DA, turn left, climb via HKE R-110 to CVC VORTAC, then via CVC R-147 to LIBRA and hold at 6000FT. Contact NARITA APP.

	MINIMA		FIELD ELEV 135ft TDZ ELEV 135ft		
	STA TO RWY16L				CIRCLING
	ILS (GP OUT)		MDA 580'		
	RTZL & RCLL AVBL	RTZL and/or RCLL OUT	PALS OUT	PALS AVBL	MDA-VIS
A					
B	RVR 800m VIS 800m	RVR 800m VIS 800m	RVR 1200m VIS 1200m	RVR 1200m VIS 1200m	740' -1600m
C				VIS 1700m	740' -2400m
D				RVR 1300m VIS 1300m	740' -3200m

RJAA / NARITA INTL

VOR/DME RWY34L

<p>NARITA APP 124.4 - 127.7 - 261.2</p>	<p>NARITA VOR/DME 117.9 NRE 35°46' 57" N/140°21' 45" E</p>	<p>NARITA TOWER 118.2 - 122.7 - 126.2 236.8 - 121.95G</p>	<p>RADAR AVAILABLE ATIS 128.25</p>
---	--	---	--



MISSED APPROACH
At 2.8DME prior to NRE VOR/DME, turn left to intercept and proceed via TYE R-161, then via OJC R-097 to VENUS and hold at 6000FT. Contact NARITA APP.
Contact NARITA APP.

VDP : not established

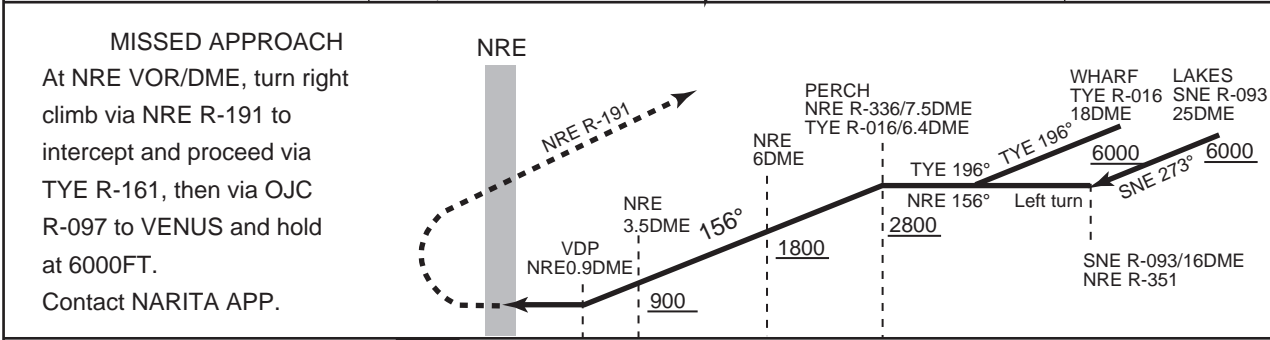
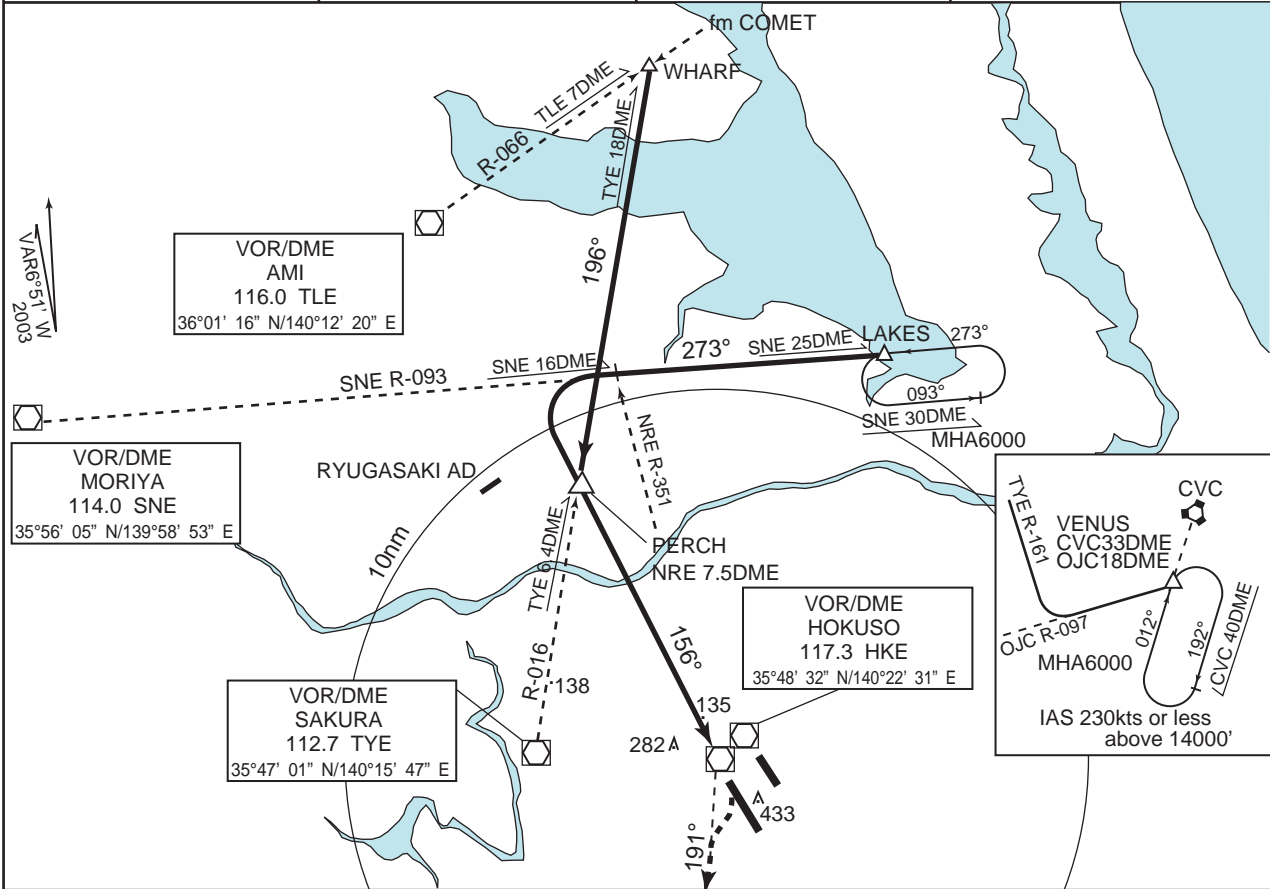
MINIMA	FIELD ELEV 135ft
--------	------------------

	STA TO RWY34L MDA 580'		CIRCLING MDA-VIS
	PALS AVBL	PALS OUT	
A		RVR 1600m VIS 1600m	740' -1600m
B	RVR 1200m VIS 1200m		
C		VIS 1700m	740' -2400m
D	RVR 1400m VIS 1400m	VIS 2300m	740' -3200m

RJAA / NARITA INTL

VOR/DME RWY16R

<p>NARITA APP 124.4 - 127.7 - 261.2</p>	<p>NARITA VOR/DME 117.9 NRE 35°46' 57" N/140°21' 45" E</p>	<p>NARITA TOWER 118.2 - 122.7 - 126.2 236.8 - 121.95G</p>	<p>RADAR AVAILABLE ATIS 128.25</p>
---	--	---	--



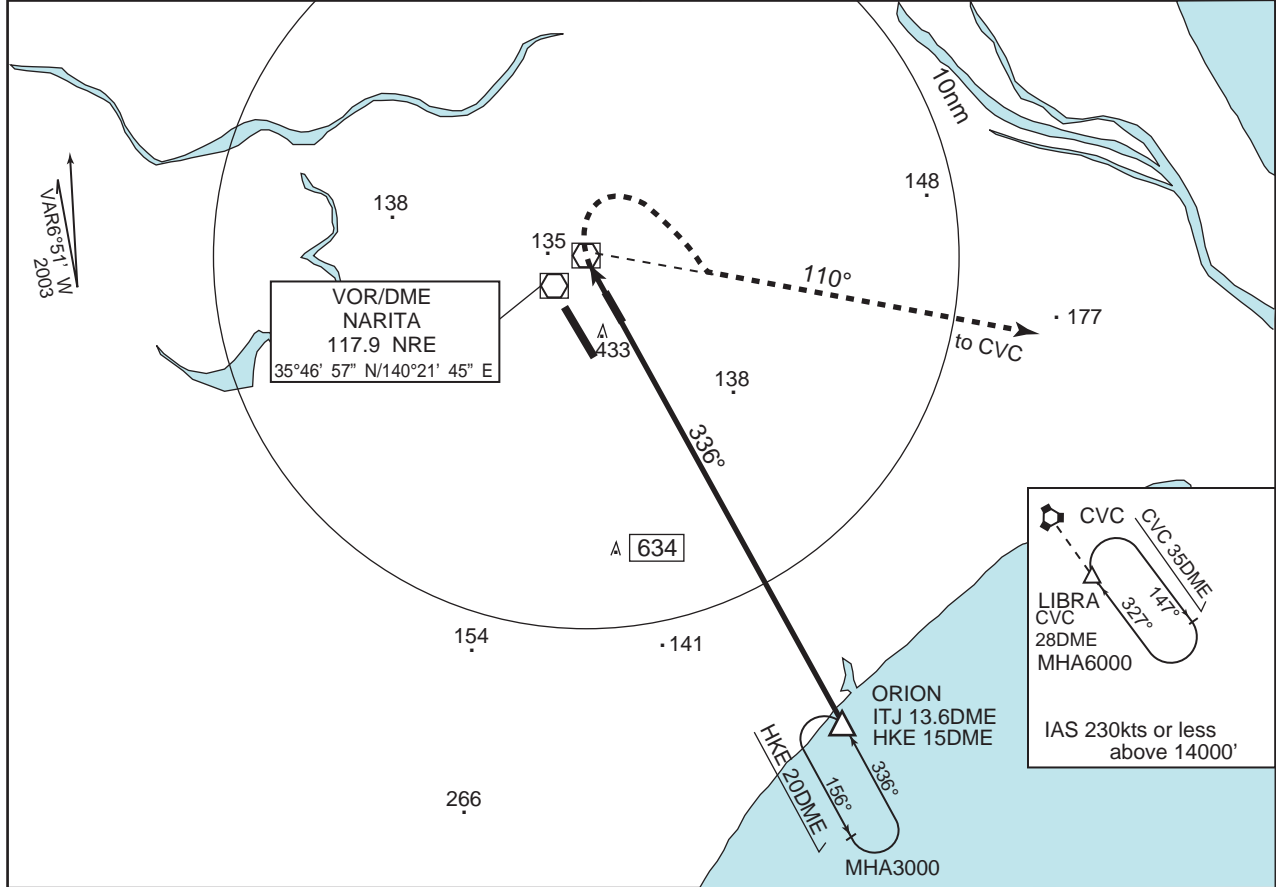
MINIMA	FIELD ELEV 135ft
--------	------------------

	STA TO RWY16R MDA 600'		CIRCLING MDA-VIS
	PALS AVBL	PALS OUT	
A	RVR 1200m VIS 1200m	RVR 1600m VIS 1600m	740' -1600m
B		VIS 1800m	740' -2400m
C	RVR 1400m VIS 1400m	VIS 2500m	740' -3200m
D			

RJAA / NARITA INTL

VOR/DME RWY34R

<p>NARITA APP 124.4 - 127.7 - 261.2</p>	<p>HOKUSO VOR/DME 117.3 HKE 35°48' 32" N/140°22' 31" E</p>	<p>NARITA TOWER 118.35 - 122.7 - 126.2 236.8 - 121.95G</p>	<p>RADAR AVAILABLE ATIS 128.25</p>
---	--	--	--



MISSED APPROACH
At HKE VOR/DME, turn right, climb via HKE R-110 to CVC VORTAC, then via CVCR-147 to LIBRA and hold at 6000FT. Contact NARITA APP.

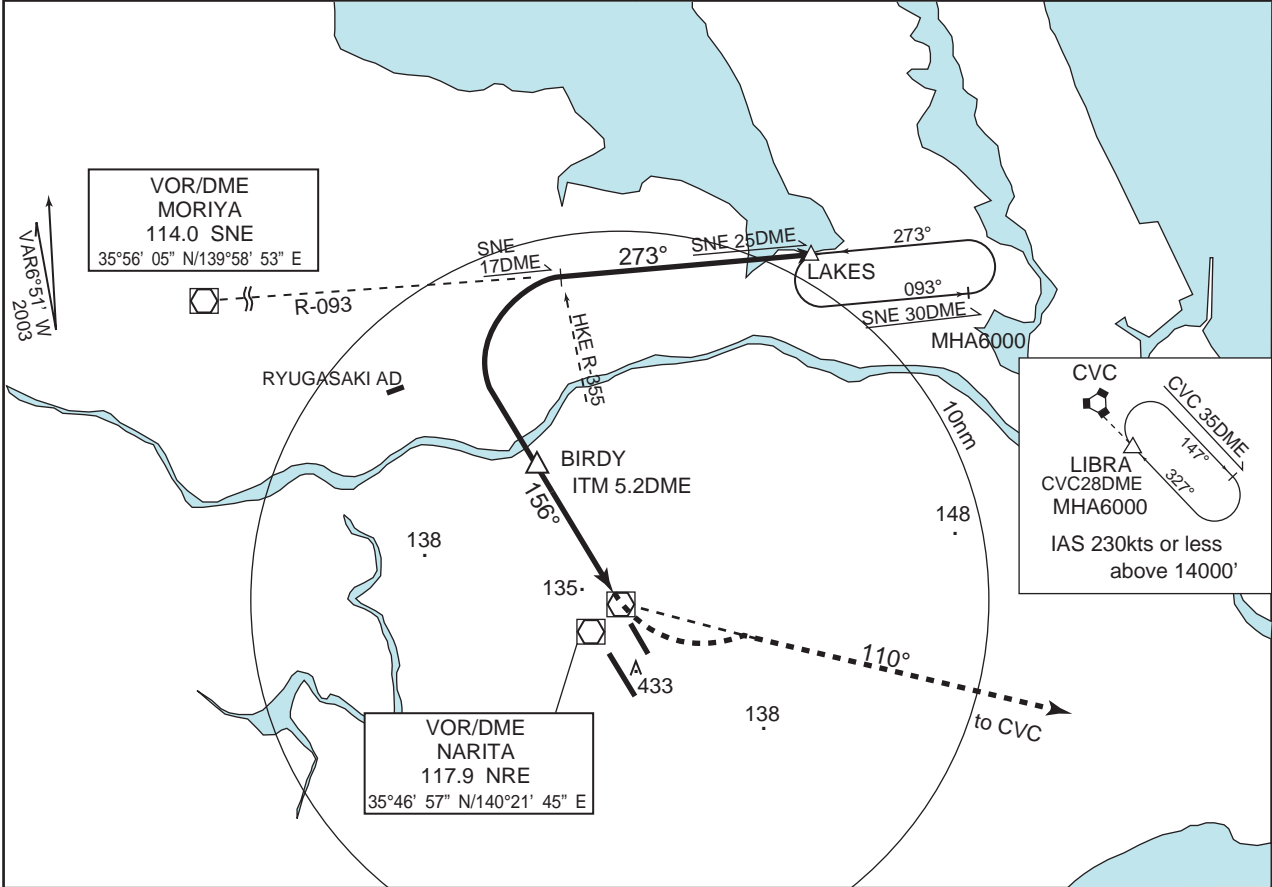
MINIMA	FIELD ELEV 135ft
--------	------------------

	STA TO RWY34R MDA 740'		CIRCLING MDA-VIS
	PALS AVBL	PALS OUT	
A		RVR 1600m VIS 1600m	740' -1600m
B	RVR 1200m VIS 1200m	VIS 1900m	740' -1900m
C		VIS 2400m	740' -2400m
D	VIS 2000m	VIS 3300m	740' -3200m

RJAA / NARITA INTL

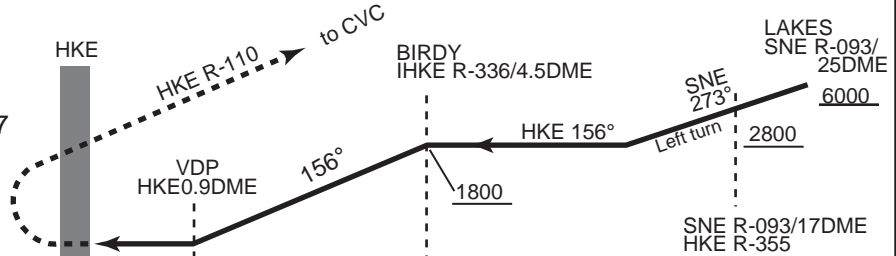
VOR/DME RWY16L

<p>NARITA APP 124.4 - 127.7 - 261.2</p>	<p>HOKUSO VOR/DME 117.3 HKE 35°48' 32" N/140°22' 31" E</p>	<p>NARITA TOWER 118.35 - 122.7 - 126.2 236.8 - 121.95G</p>	<p>RADAR AVAILABLE ATIS 128.25</p>
---	--	--	--



MISSED APPROACH

At HKE VOR/DME, turn left climb via HKE R-110 to CVC VORTAC, then via CVC R-147 to LIBRA and hold at 6000FT. Contact NARITA APP.



FIELD ELEV 135ft

	STA TO RWY16L MDA 580'		CIRCLING MDA-VIS
	PALS AVBL	PALS OUT	
A			
B	RVR 1200m VIS 1200m	RVR 1600m VIS 1600m	740' -1600m
C		VIS 1700m	740' -2400m
D	RVR 1400m VIS 1400m	VIS 2300m	740' -3200m

STARs for RWY 16R/LCOSMO NORTH ARRIVAL

From over VENUS, proceed via CVC R-192 to CAMEO, via NRE R-156 to SOLAR, then via GOC R-178 to LAKES.

Cross LAKES at or above 6,000FT.

VENUS NORTH ARRIVAL

From over VENUS, proceed via CVC R-192 to CVC VORTAC, via CVC R-323 until crossing SNE R-094, then turn left to LAKES.

Cross LAKES at or above 6,000FT.

LIBRA NORTH ARRIVAL

From over LIBRA, proceed via CVC R-147 to CVC VORTAC, via CVC R-323 until crossing SNE R-094, then turn left to LAKES.

Cross LAKES at or above 6,000FT.

ARIES NORTH ARRIVAL

From over ARIES, proceed via NRE R-095 to intercept and proceed via CVC R-323 until crossing SNE R-094, then turn left to LAKES.

Cross LAKES at or above 6,000FT.

KASMI NORTH ARRIVAL

From over KASMI, proceed via CVC R-347 to 19DME(SNE R-088), turn right to Intercept and proceed via SNE R-093 to LAKES.

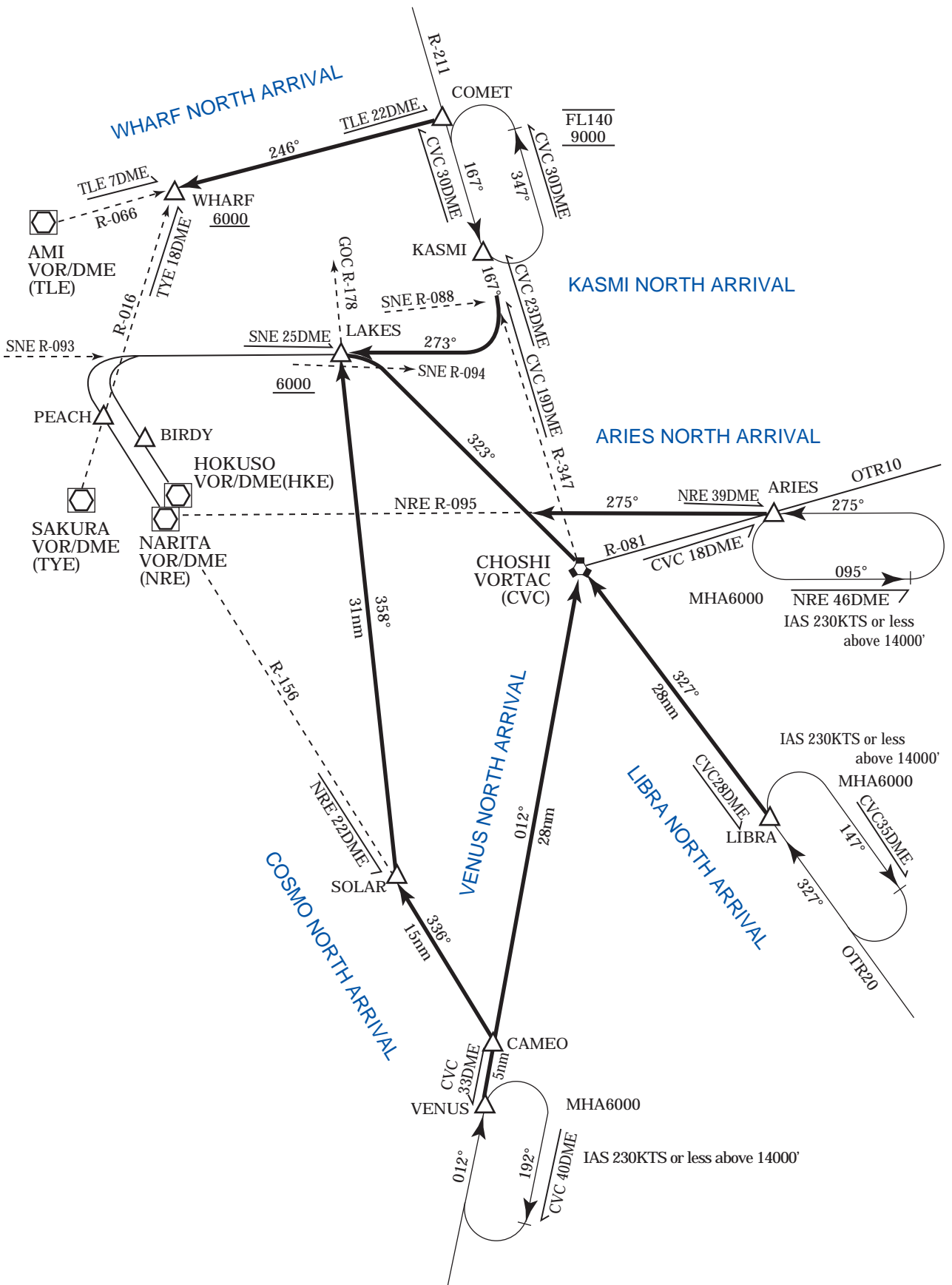
Cross LAKES at or above 6,000FT.

WHARF NORTH ARRIVAL

From over COMET, proceed via TLE R-066 to WHARF.

Cross WHARF at or above 6,000FT.

STARs for RWY16R/L



STARs for RWY 34R/LVENUS SOUTH ARRIVAL

From over VENUS, proceed via CVC R-192,....

RWY34L :to CAMEO, then via NRE R-156 to COSMO.

Cross COSMO at or above 6,000FT.

Cross COSMO at or above 4,000FT.

RWY34R :to ROUGE, then via HKE R-156 to ORION.

Cross ORION at or above 3,000FT.

LIBRA SOUTH ARRIVAL

From over LIBRA, proceed via CVC R-147 to 7DME, turn left HDG 280DEG to Intercept and proceed via CVC R-230,....

RWY34L :to BEACH, then turn right, via NRE R-156 COSMO.

Cross COSMO at or above 4,000FT.

RWY34R :to BEANS, then turn right via HKE R-156 to ORION.

Cross ORION at or above 3,000FT.

ARIES SOUTH ARRIVAL

From over ARIES, proceed via NRE R-095 to intercept and proceed via CVC R-050 to CVC VORTAC, via CVC R-230,....

RWY34L :to BEACH, then turn right, via NRE R-156 to COSMO.

Cross COSMO at or above 4,000FT.

RWY34R :to BEANS, then turn right, via HKE R-156 to ORION.

Cross ORION at or above 3,000FT.

KASMI SOUTH ARRIVAL

From over KASMI, proceed via CVC R-347 to 5DME, turn right HDG 190DEG To intercept and proceed via CVC R-230,...

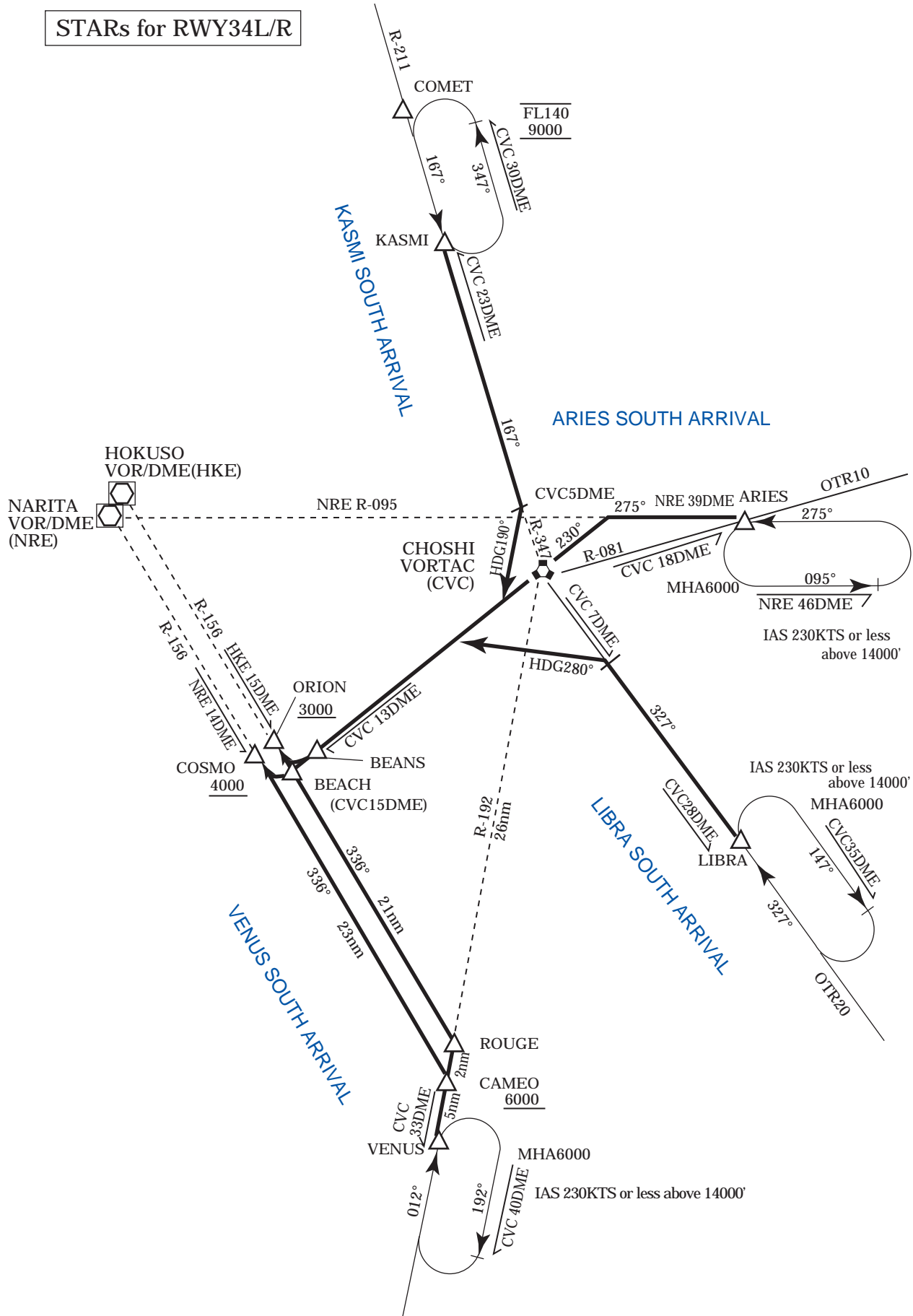
RWY34L :to BEACH, then turn right, via NRE R-156 to COSMO.

Cross COSMO at or above 4,000FT.

RWY34R :to BEANS, then turn right, via HKE R-156 to ORION.

Cross ORION at or above 3,000FT.

STARs for RWY34L/R



SAKURA SEVEN DEPARTURE

RWY 16R : Climb via NRE R-156 to 14DME,...

RWY 16L : Climb via HKE R-156 to 15DME,...

...turn right to intercept and proceed via TYE R-161 to TYE VOR/DME within NRE 20DME(RWY16R) /HKE21DME(RWY16L).

RWY 34L : Climb via NRE R-336 to 6DME,...

RWY 34R : Climb via HKE R-336 to 4.3DME,...

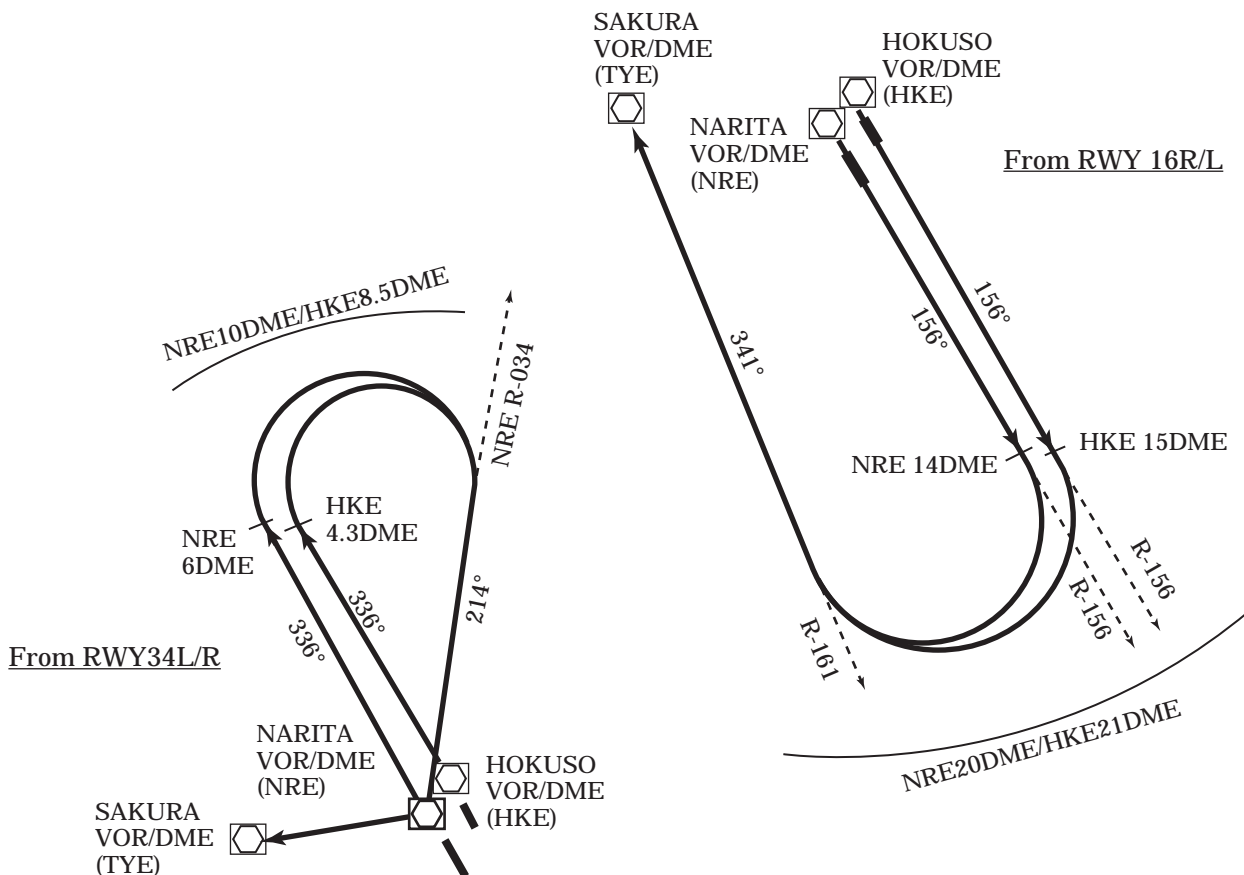
...turn right to intercept and proceed via NRE R-034 to NRE VOR/DME within NRE 10DME(RWY34L) /HKE 8.5DME(RWY34R), then proceed to TYE VOR/DME.

Note 1 : Aircraft unable to comply with the flight restrictions, inform NARITA DELIVERY for alternate procedure, when requesting ATC clearance.

Note 2 : When takinf off from RWY34L/RWY16L, following climb gradient should be maintained until 630FT.

Speed (Knots)	60	90	120	150	180	210
Rate (Feet/Min)	300	450	600	750	900	1050

SAKURA SEVEN DEPARTURE



PAPAS EIGHT DEPARTURE

RWY16R : Climb via NRE R-156 to 14DME,...

RWY16L : Climb via HKE R-156 to 15DME,...

....turn left to intercept and proceed via NRE R-137 to PAPAS.

Cross PAPAS at or above 7,000FT.

RWY34L : Climb via NRE R-336 to 6DME,...

RWY34R : Climb via NRE R-336 to 4.3DME,...

....turn right within NRE 10DME (RWY34L)/HKE 8.5DME(RWY34R),
proceed via OJC R-012 to intercept and proceed via NRE R-137 to PAPAS.

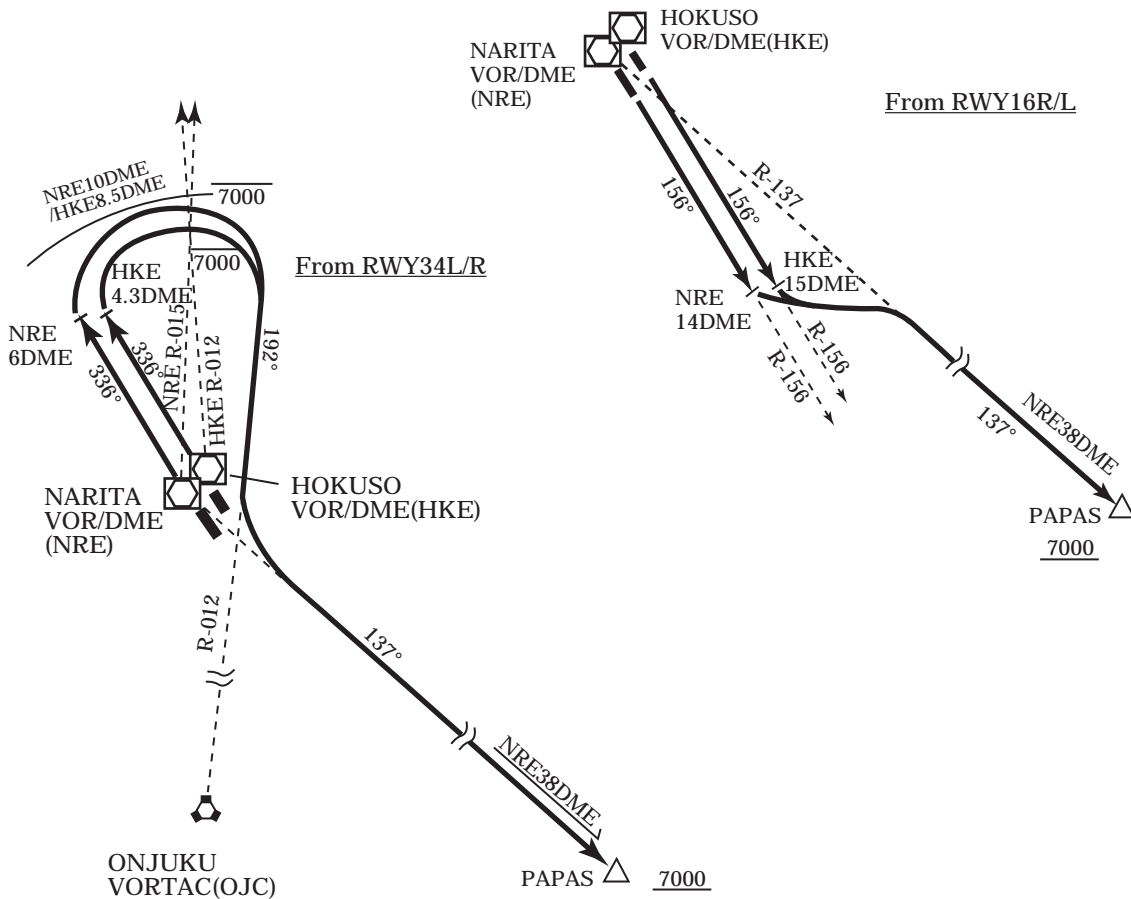
Cross PAPAS at or above 7,000FT.

Note 1 : Aircraft unable to comply with the flight restrictions, inform NARITA DELIVERY for alternate procedure, when requesting ATC clearance.

Note 2 : When taking off from RWY34L/RWY16L, following climb gradient should be maintained until 630FT.

Speed (Knots)	60	90	120	150	180	210
Rate (Feet/Min)	300	450	600	750	900	1050

PAPAS EIGHT DEPARTURE



NARITA REVERSAL EIGHT DEPARTURE

RWY 16R : Climb via NRE R-156 to 14DME,...

RWY 16L : Climb via HKE R-156 to 14DME,...

....turn left to intercept and proceed via NRE R-129 within NRE 20DME, then via CVC R-272 to TETRA.

Cross TETRA between FL150 and FL180.

RWY 34L : Climb via NRE R-336 to 6DME, turn right to intercept and proceed via SNE R-100 to 23DME,...

RWY 34R : Climb via HKE R-336 to 4.3DME, turn right to intercept and proceed via SNE R-100 to 23DME (*intercept SNE R-100 within HKE 8.5DME),...
turn right HDG 160 DEG to intercept and proceed via CVC R-272 to TETRA.

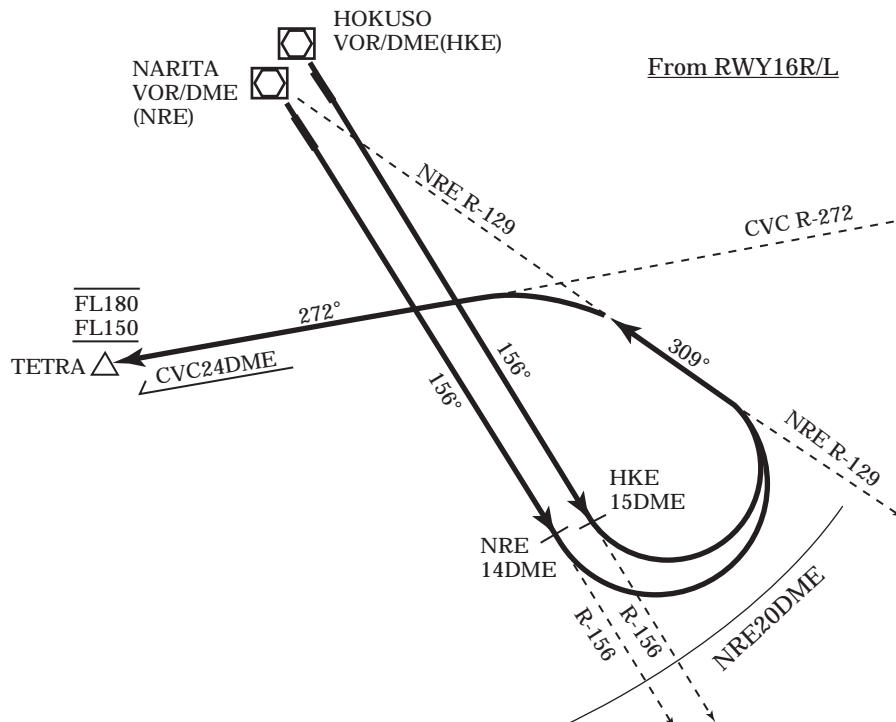
Cross NRE R-348(RWY34L)/HKE R-004(RWY34R) at or above 2,800FT, cross SNE R-100/21DME at or below 7,000FT, cross SNE R-100/23DME at or above 3,500FT, and cross TETRA between FL150 and FL180.

Note 1 : Aircraft unable to comply with the flight restrictions, inform NARITA DELIVERY for alternate procedure, when requesting ATC clearance.

Note 2 : When taking off from RWY34L/RWY16L, following climb gradient should be maintained until 630FT.

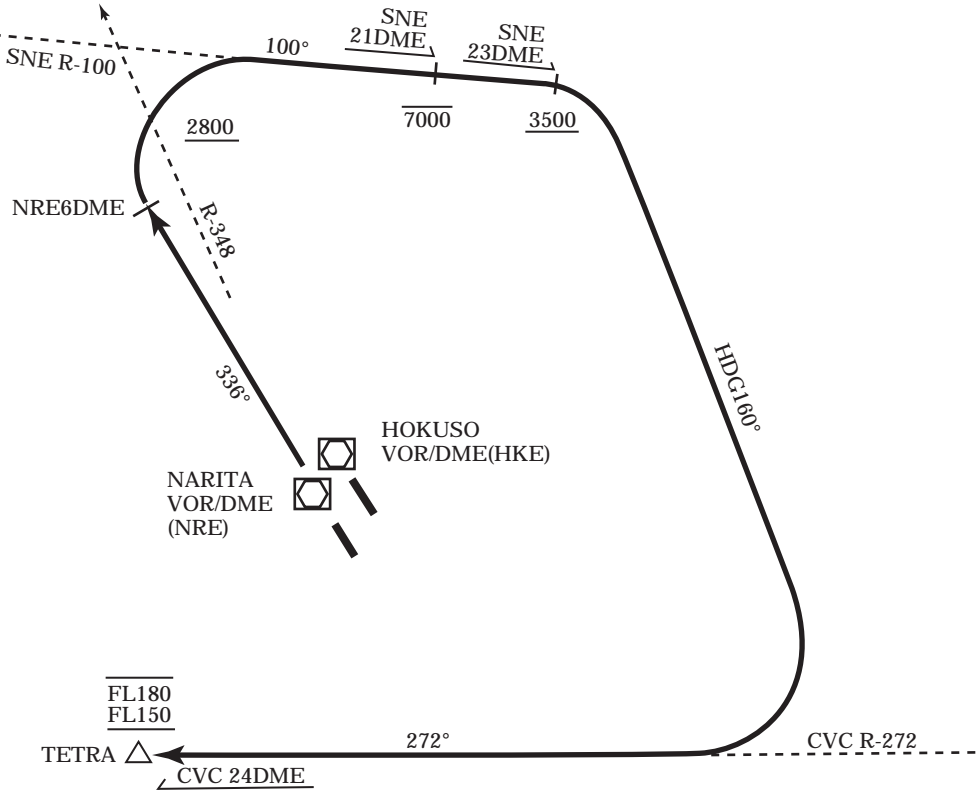
Speed (Knots)	60	90	120	150	180	210
Rate (Feet/Min)	300	450	600	750	900	1050

NARITA REVERSAL EIGHT DEPARTURE

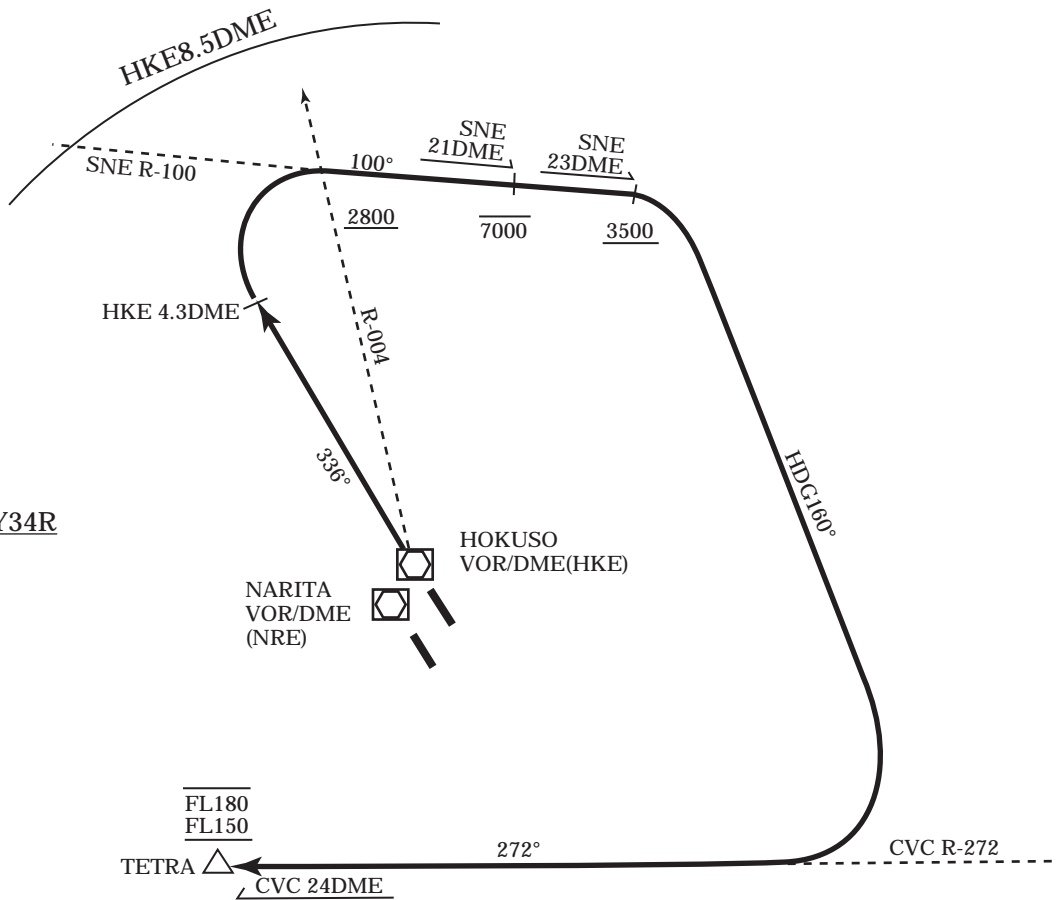


**NARITA REVERSAL
EIGHT DEPARTURE**

From RWY 34L



From RWY34R



CHOSHI TOW DEPARTURE

RWY 16R : Climb via NRE R-156 to 14DME,...

RWY 16L : Climb via HKE R-156 to 14DME,...

....turn left to intercept and proceed via HME R-096(096DEG from HM NDB) to join OTR15 / to GOPPY.

Cross GUPPY at or above 10,000FT.

RWY 34L : Climb via NRE R-336 to 6DME,...

RWY 34R : Climb via HKE R-336 to 4.3DME,....

turn right within NRE 10DME(RWY34L)/HKE 8.5DME(RW34R), proceed via OJC R-012 to intercept and proceed via NRE R-137, then via HME R-096(096DEG from HM NDB) to join OTR5 / to GUPPY.

Cross NRE R-015(RWY34L)/HKE R-012(RWY34R) at or above 7,000FT, cross GUPPY at or above 10,000FT.

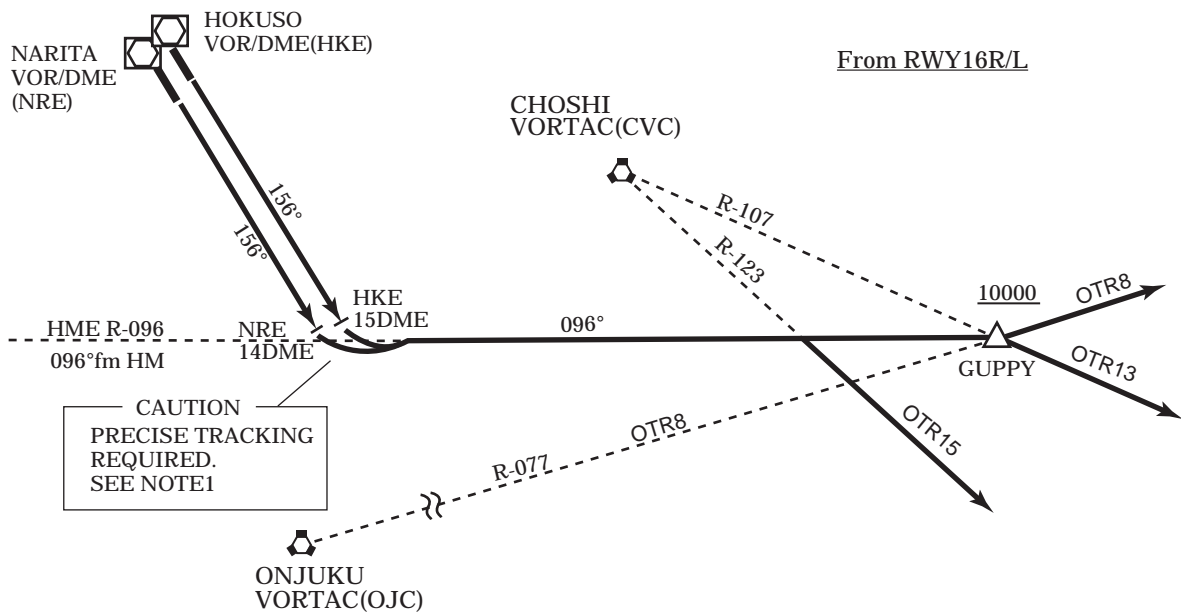
Note 1 : Aircraft taking off from RWY16R(RWY16L) should make left turn after passing NRE R-156/14DME (HKE R-0156/15DME).

Note 2 : Aircraft unable to comply with the flight restrictions, inform NARITA DELIVERY for alternate procedure, when requesting ATC clearance.

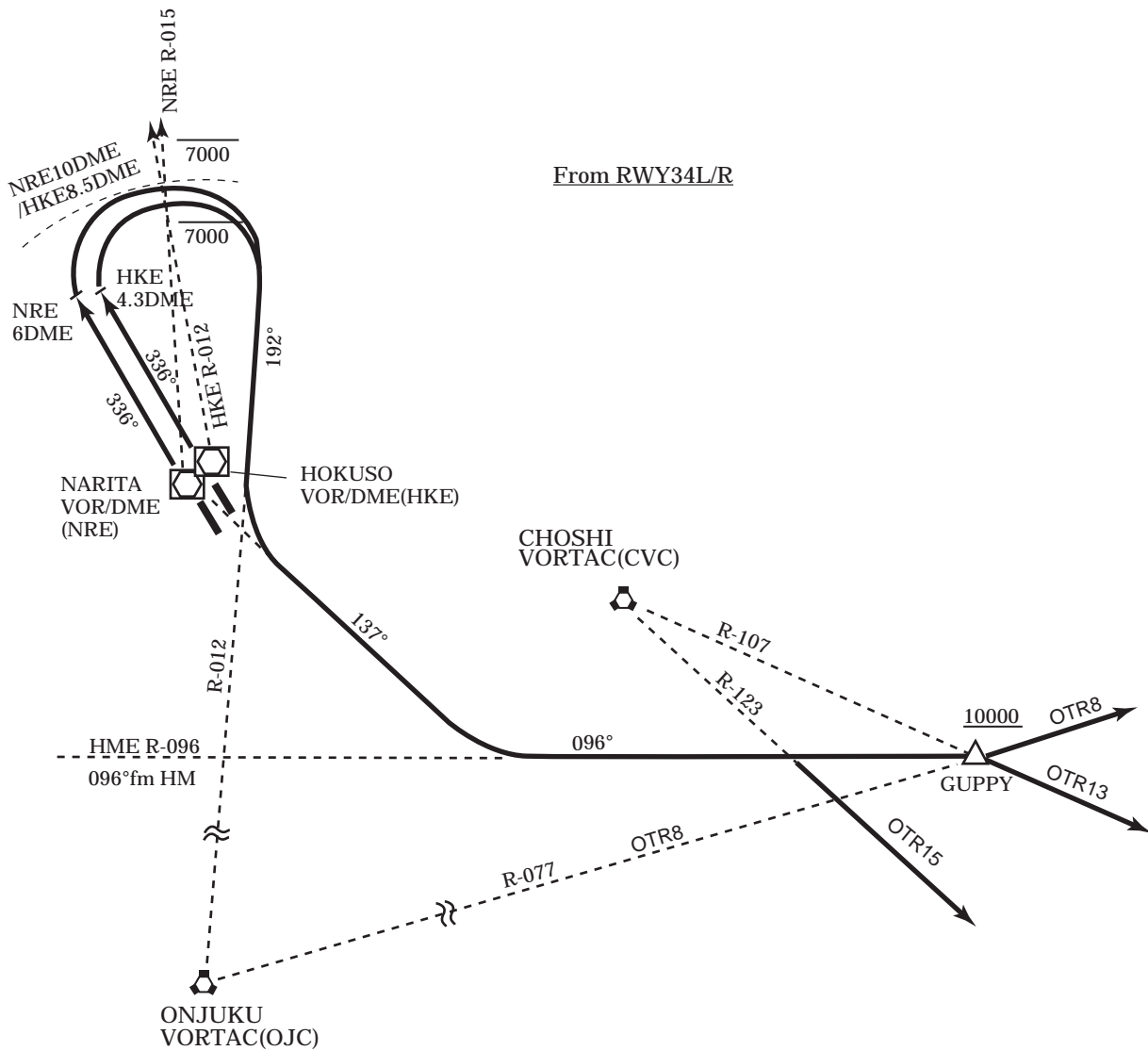
Note 3 : When taking off from RWY34L/RWY16L, following climb gradient should be maintained until 630FT.

Speed (Knots)	60	90	120	150	180	210
Rate (Feet/Min)	300	450	600	750	900	1050

CHOSHI TWO DEPARTURE



CHOSHI TWO DEPARTURE



SEKIYADO FOUR DEPARTURE

RWY 16R : Climb via NRE R-156 to 14DME,...

RWY 16L : Climb via HKE R-156 to 14DME,...

....turn left to intercept and proceed via TYE R-161 to TYE VOR/DME within NRE 20DME(RWY16R)/HKE 21DME(RWY16L) then via SYE R-131 to SYE VOR/DME.

Cross SYE VOR/DME at 7,000FT.

RWY 34L : Climb via NRE R-336 to USHIK,...

RWY 34R : Climb via HKE R-336 to CREEK,...

....turn left to intercept and proceed via SYE R-108 to SYE VOR/DME.

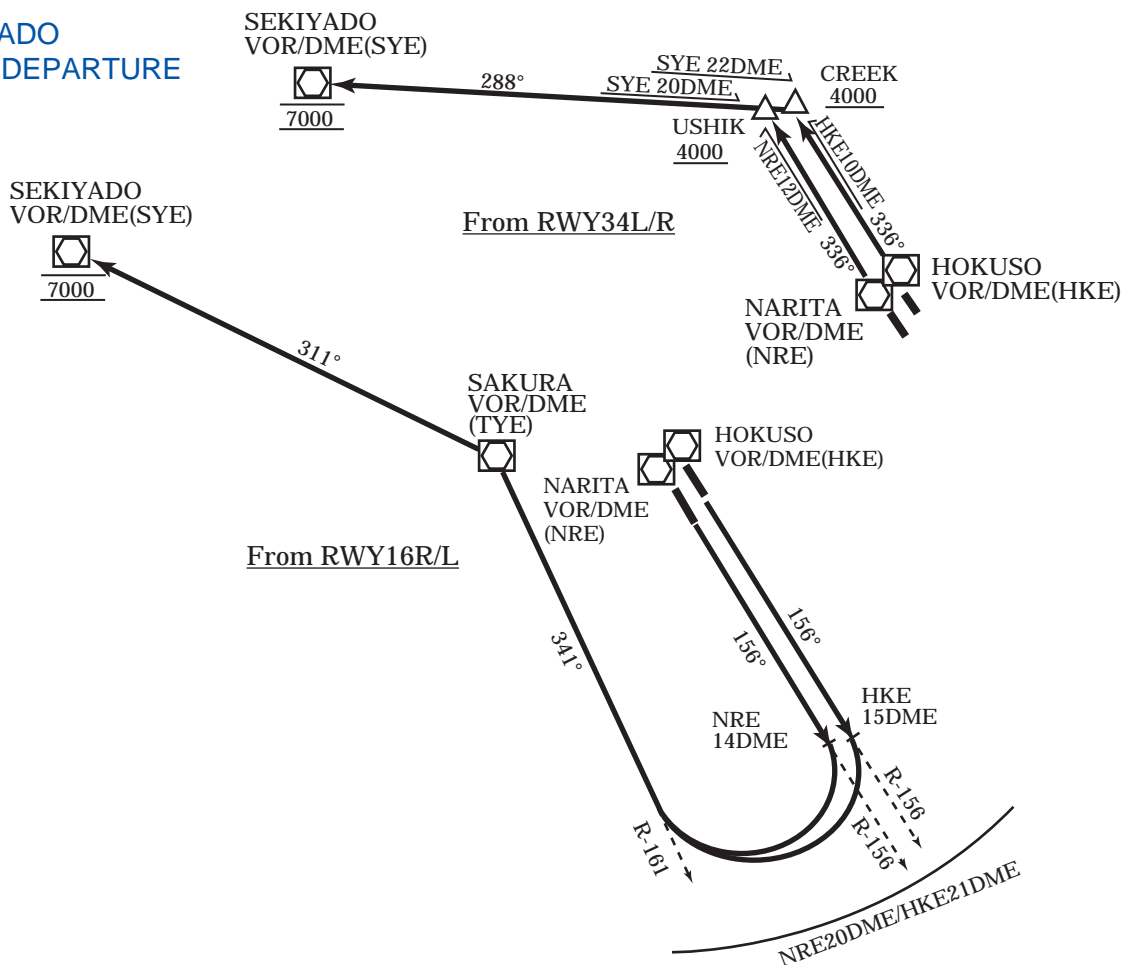
Cross USHIK/CREEK at or above 4,000FT, cross SYE VOR/DME at 7.000FT.

Note 1 : Aircraft unable to comply with the flight restrictions, inform NARITA DELIVERY for alternate procedure, when requesting ATC clearance.

Note 2 : When taking off from RWY34L/RWY16L, following climb gradient should be maintained until 630FT.

Speed (Knots)	60	90	120	150	180	210
Rate (Feet/Min)	300	450	600	750	900	1050

SEKIYADO FOUR DEPARTURE



ONJUKU ONE DEPARTURE

RWY 16R : Climb via NRE R-156,...

RWY 16L : Climb via HKE R-156,...

....to intercept and proceed via OJC R-039 to OJC VORTAC.

RWY 34L : Climb via NRE R-336 to 6DME,...

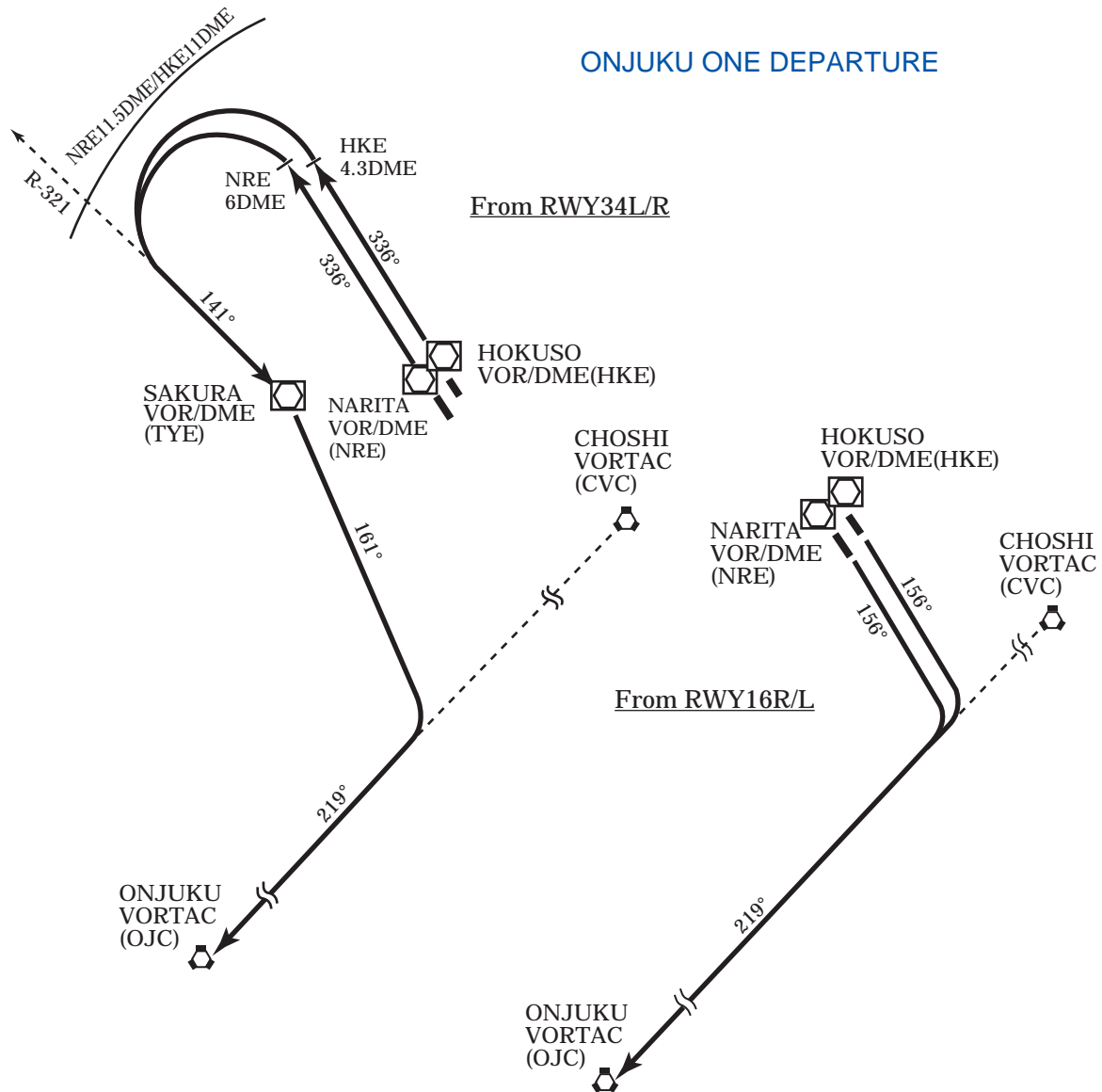
RWY 34R : Climb via HKE R-336 to 4.3DME,...

....turn left to intercept and proceed via TYE R-321 within NRE 11.5DME (RWY34L)/HKE 11DME (RWY34R) to TYE VOR/DME, via TYE R-161 to intercept and proceed via OJC R-039 to OJC VORTAC.

Note 1 : Aircraft unable to comply with the flight restrictions, inform NARITA DELIVERY for alternate procedure, when requesting ATC clearance.

Note 2 : When taking off from RWY34L/RWY16L, following climb gradient should be maintained until 630FT.

Speed (Knots)	60	90	120	150	180	210
Rate (Feet/Min)	300	450	600	750	900	1050



TULIP ONE DEPARTURE

RWY 34L : Climb via NRE R-336 to 6DME,...

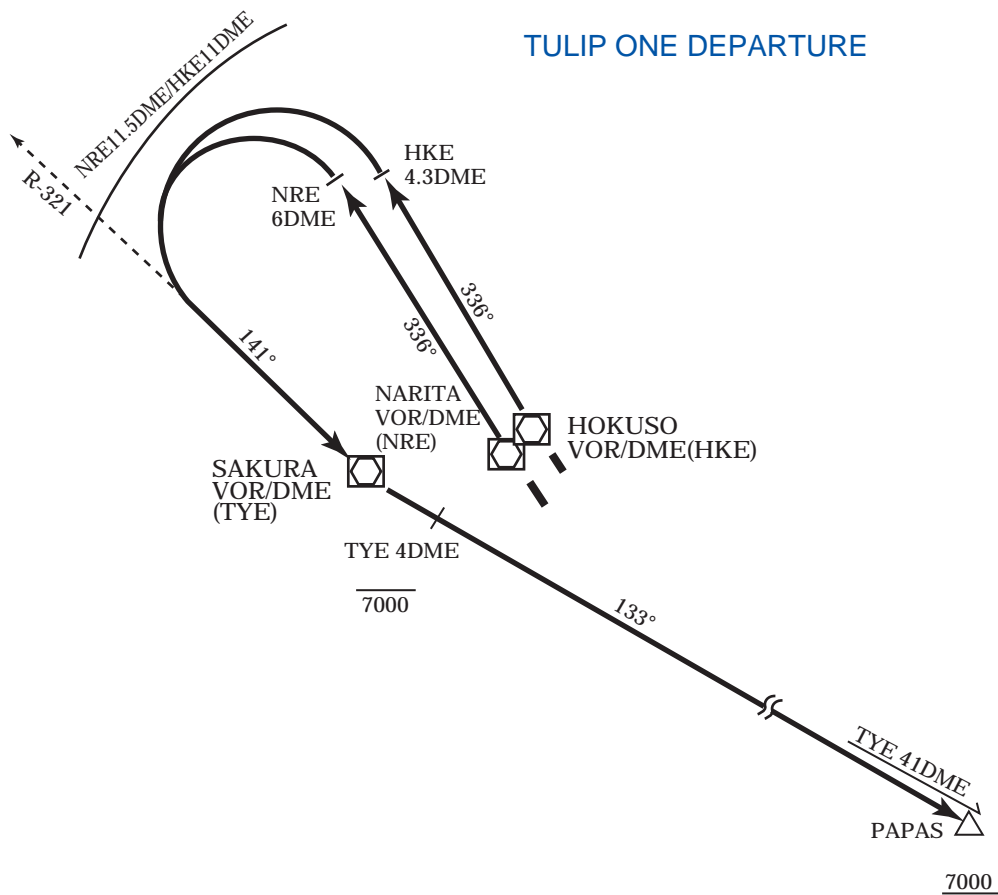
RWY 34R : Climb via HKE R-336 to 4.3DME,...

...turn left to intercept and proceed via TYE R-321 within NRE 11.5DME (RWY34L)/HKE 11DME (RWY34R) to TYE VOR/DME, then via TYE R-133 to PAPAS.

Note 1 : Aircraft unable to comply with the flight restrictions, inform NARITA DELIVERY for alternate procedure, when requesting ATC clearance.

Note 2 : When taking off from RWY34L/RWY16L, following climb gradient should be maintained until 630FT.

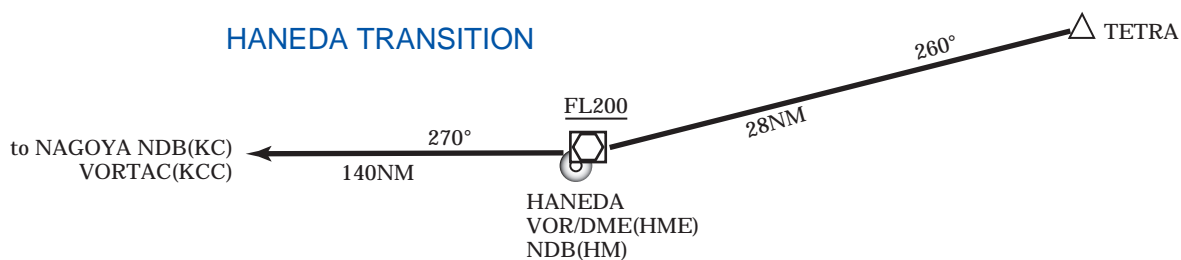
Speed (Knots)	60	90	120	150	180	210
Rate (Feet/Min)	300	450	600	750	900	1050



HANEDA TRANSITION

From over TETRA, proceed via HME R-080 to HME VOR/DME (260DEG to HM NDB), then via HME R-270 (270DEG from HM NDB) to KCC VORTAC(KC NDB).

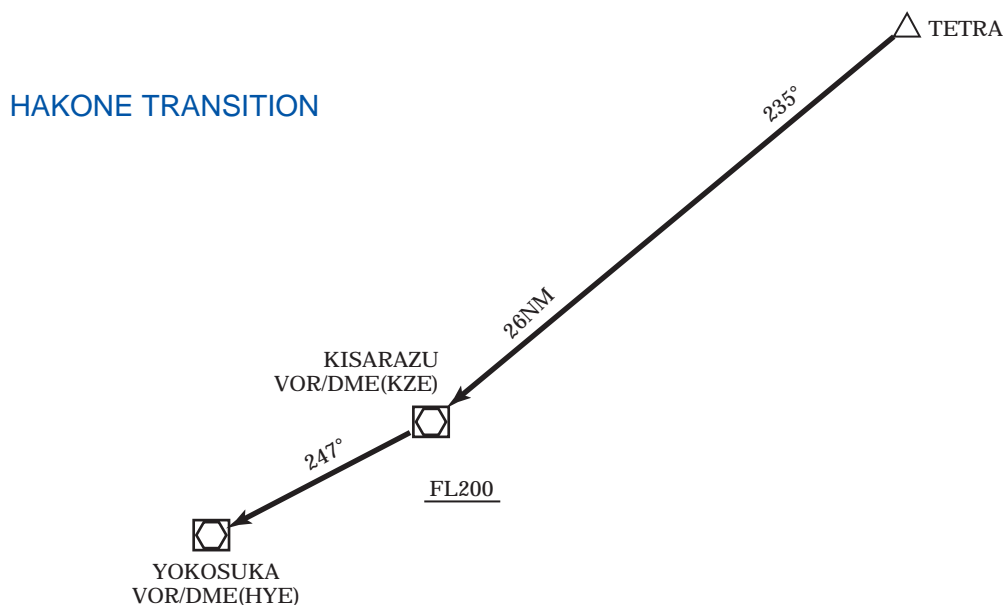
Cross HME VOR/DME(HM NDB) at or above FL200.



HAKONE TRANSITION

From over TETRA, proceed via KZE R-055 to KZE VOR/DME, then via KZE R-247 to HYE VOR/DME.

Cross KZE VOR/DME at or above FL200.

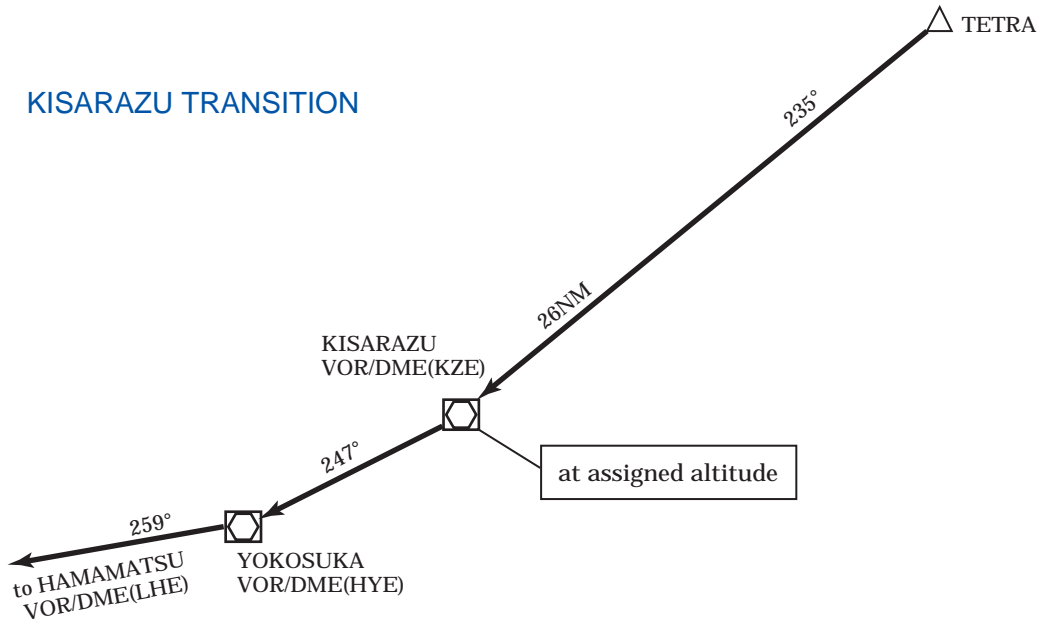


KISARAZU TRANSITION

From over TETRA, proceed via KZE R-055 to KZE VOR/DME, via KZE R-247 to HYE VOR/DME, then via HYE R-259 to LHE VOR/DME.

Cross KZE VOR/DME at assigned altitude.

KISARAZU TRANSITION

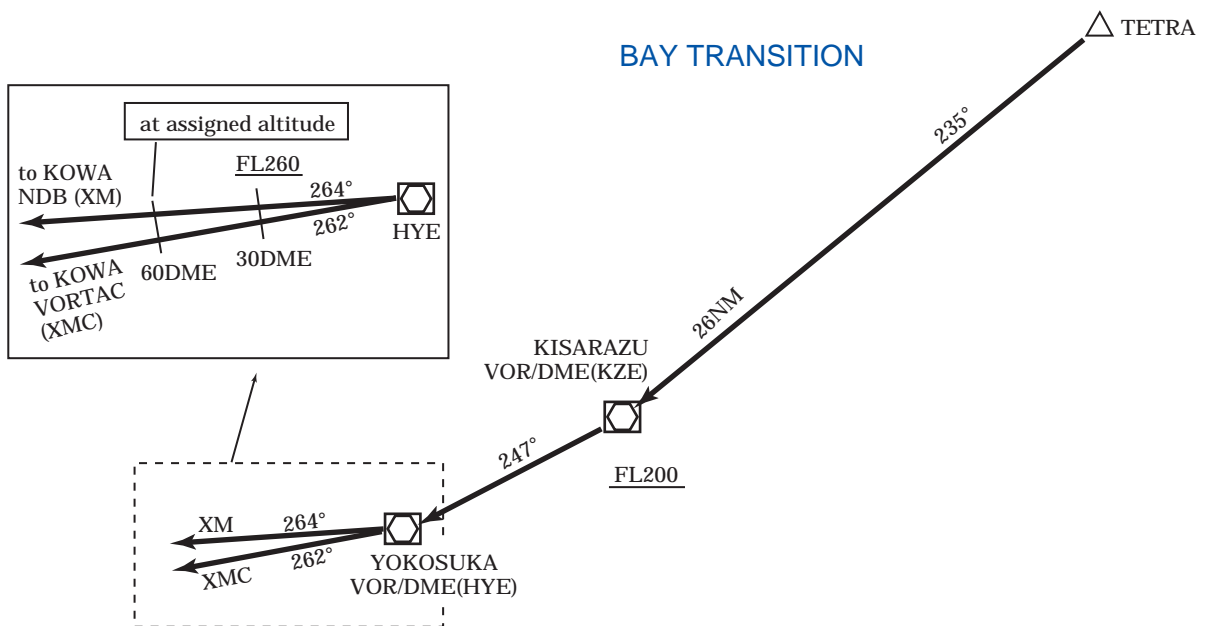


BAY TRANSITION

From over TETRA, proceed via KZE R-055 to KZE VOR/DME, via KZE R-247 to HYE VOR/DME, then via HYE R-262 to XMC VORTAC (HYE R-264 to XM NDB).

Cross KZE VOR/DME at or above FL200, cross HYE R-262/30DME (HYE R-264/30DME) at or above FL260, cross HYE R-262/60DME (HYE R-264/60DME) at assigned altitude.

BAY TRANSITION

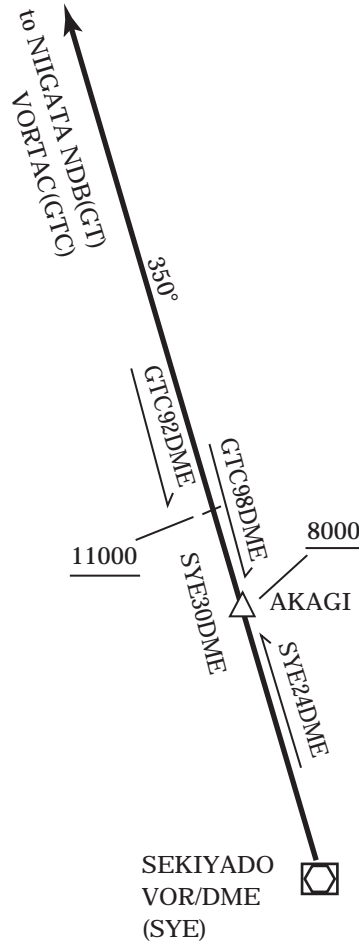


NIIGATA TRANSITION

From over SYE VOR/DME, proceed via SYE R-350 to GTC VORTAC (GT NDB).

Cross AKAGI at or above 8,000FT, cross SYE R-350/30DME at or above 11,000FT.

NIIGATA TRANSITION

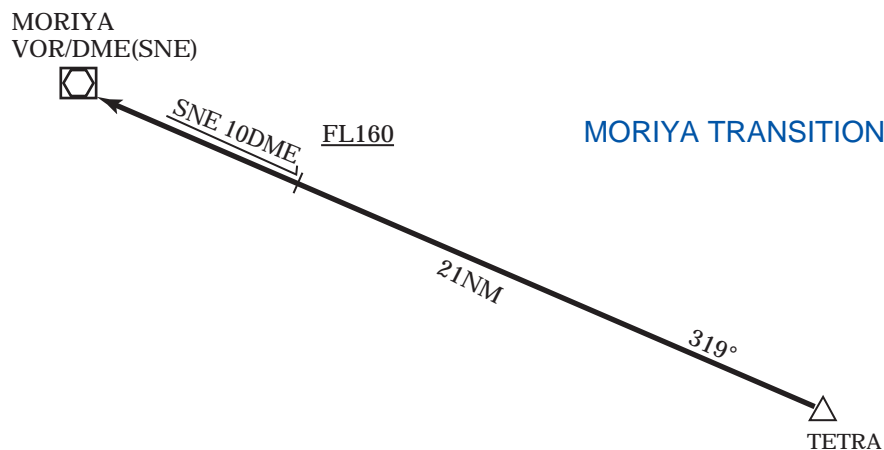


MORIYA TRANSITION

From over TETRA, proceed via SNE R-139 to SNE VOR/DME.

Cross SNE R-139/10DME at or above FL160.

MORIYA TRANSITION

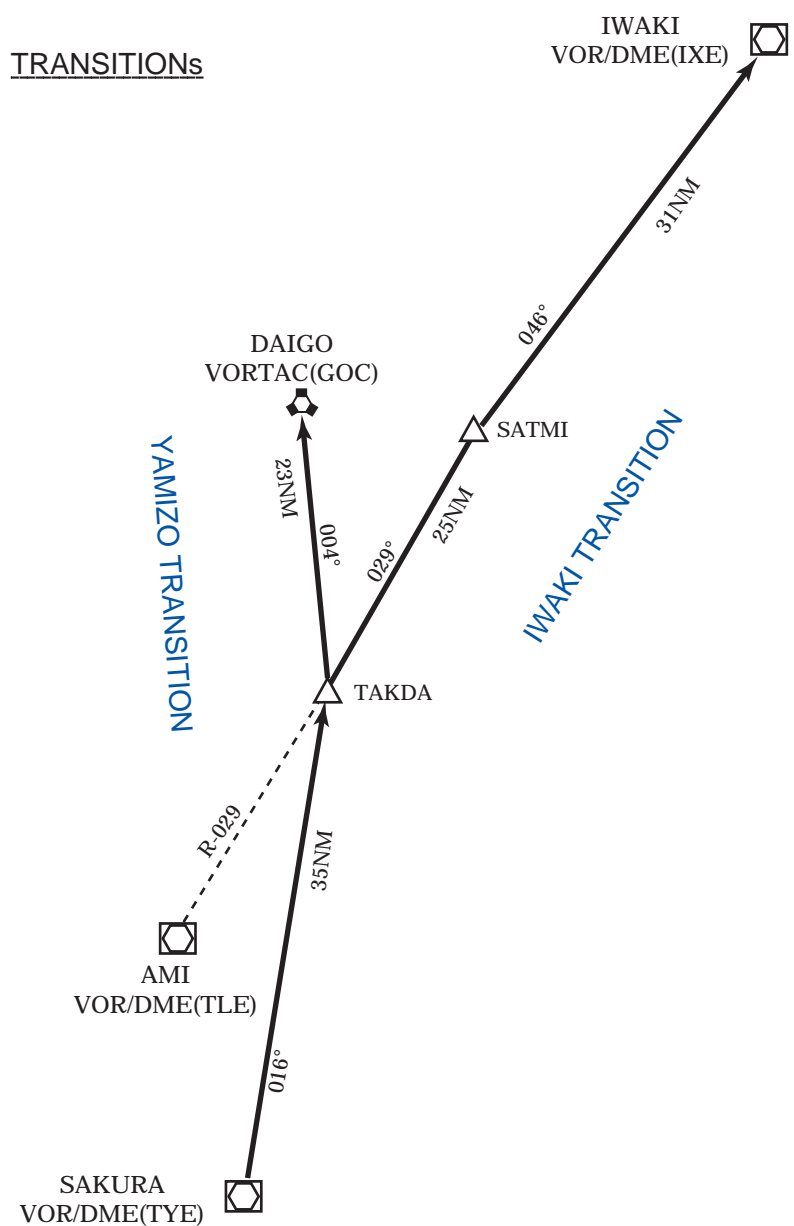


YAMIZO TRANSITION

From over TYE VOR/DME, proceed via TYE R-016 to TAKDA, then via GOC R-184 to GOC VORTAC.

IWAKI TRANSITION

From over TYE VOR/DME, proceed via TYE R-016 to TAKDA, then via TLE R-029 to SATMI, then via IXE R-226 to IXE VOR/DME.



CHINO TRANSITION

From over TETRA, via KWE R-085 to KWE VOR/DME, then via KWE R-292 to CHINO.
Cross KWE at or above FL210, cross KWE R-292/12DME at or above FL240.

