

RJBB

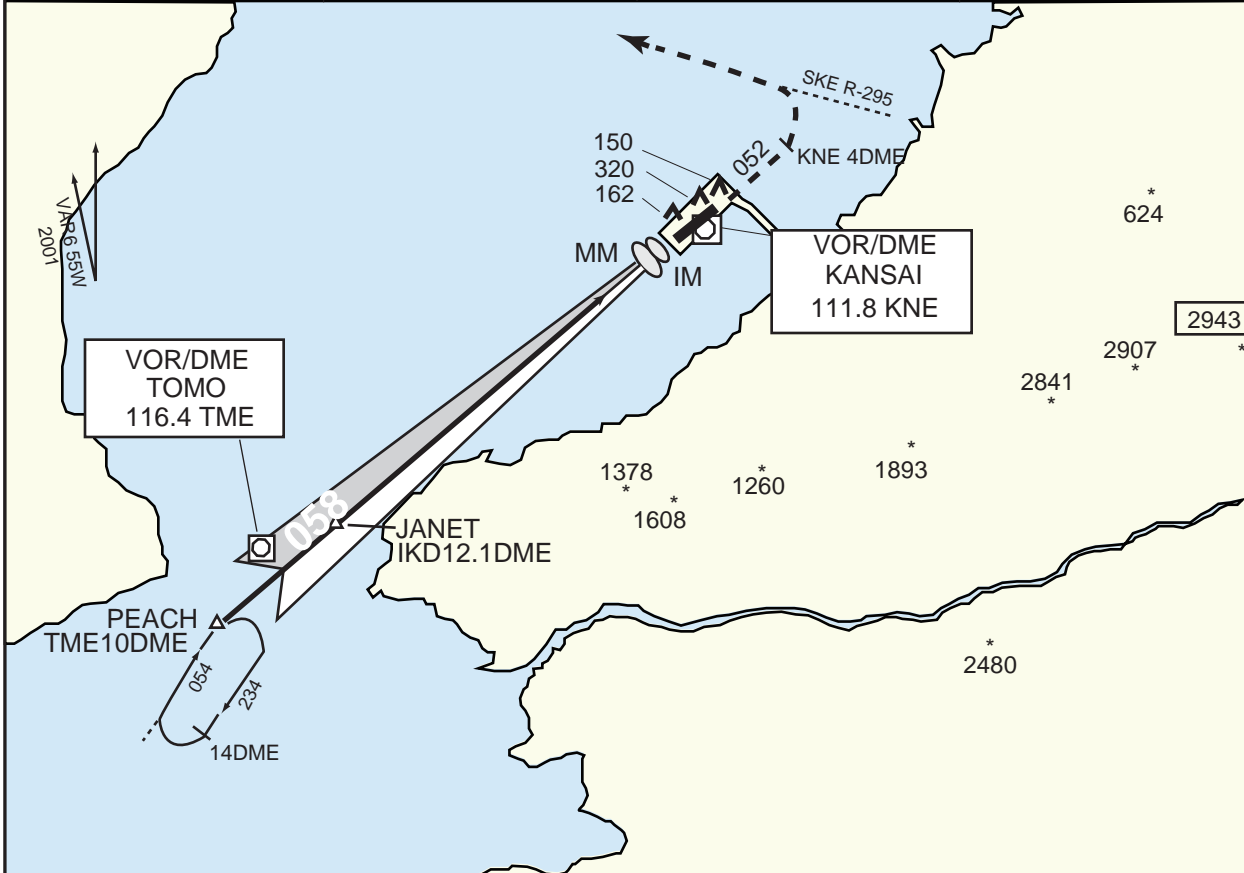
KANSAI ILS RWY 06

KANSAI APP
120.25-125.5
258.3

ILS-LLZ
108.1 IKD
ILS-GP 334.7
ILS-DME CH-18

KANSAI TOWER
118.2-126.2
236.8

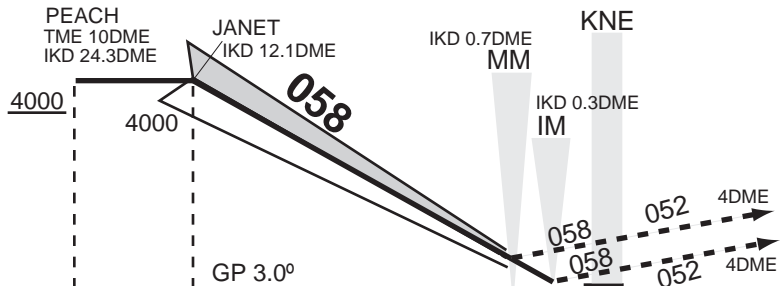
RADAR AVAILABLE
ATIS 127.85



MISSED APPROACH

At DA climb on HDG 058 DEG to Intercept and proceed via KNE R-052 to KNE 4DME, turn left, via SKE R-295 to MAIKO, SKE R-087 to AKASI and hold at 7000'. Contact KANSAI APP.

ILS REFERENCE DATUM 54'



MINIMA

FIELD ELEV 15FT
TDZ ELEV 16FT

	CATII RA 100' DA 116'	STA TO RWY 06					CIRCLING*
		ILS			(GP OUT)		
		RTZL & RCLL AVBL	RTZL &/or RCLL OUT	PALS OUT	PALS ABVL	PALS OUT	
A	RVR 350m	RVR 550m VIS 800m	RVR 800m VIS 800m	RVR 1200m VIS 1200m	RVR 1200m VIS 1200m	RVR 1400m VIS 1400m	620'-1600m
B						RVR 1600m VIS 1600m	
C							
D							

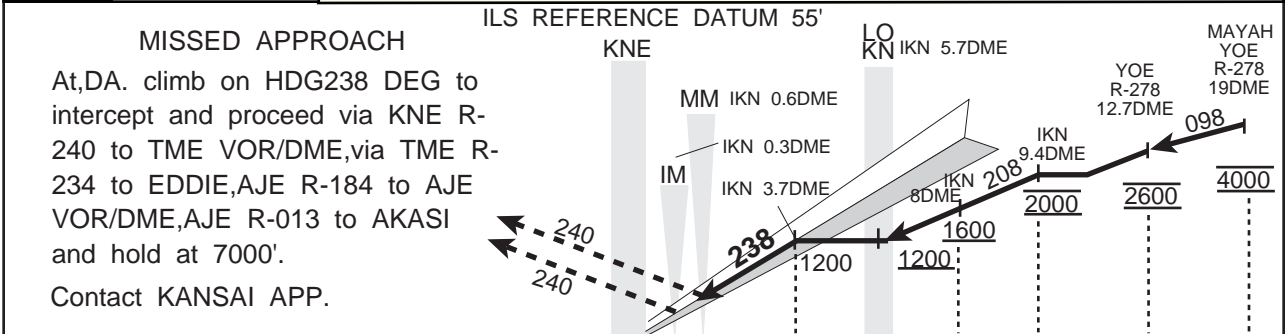
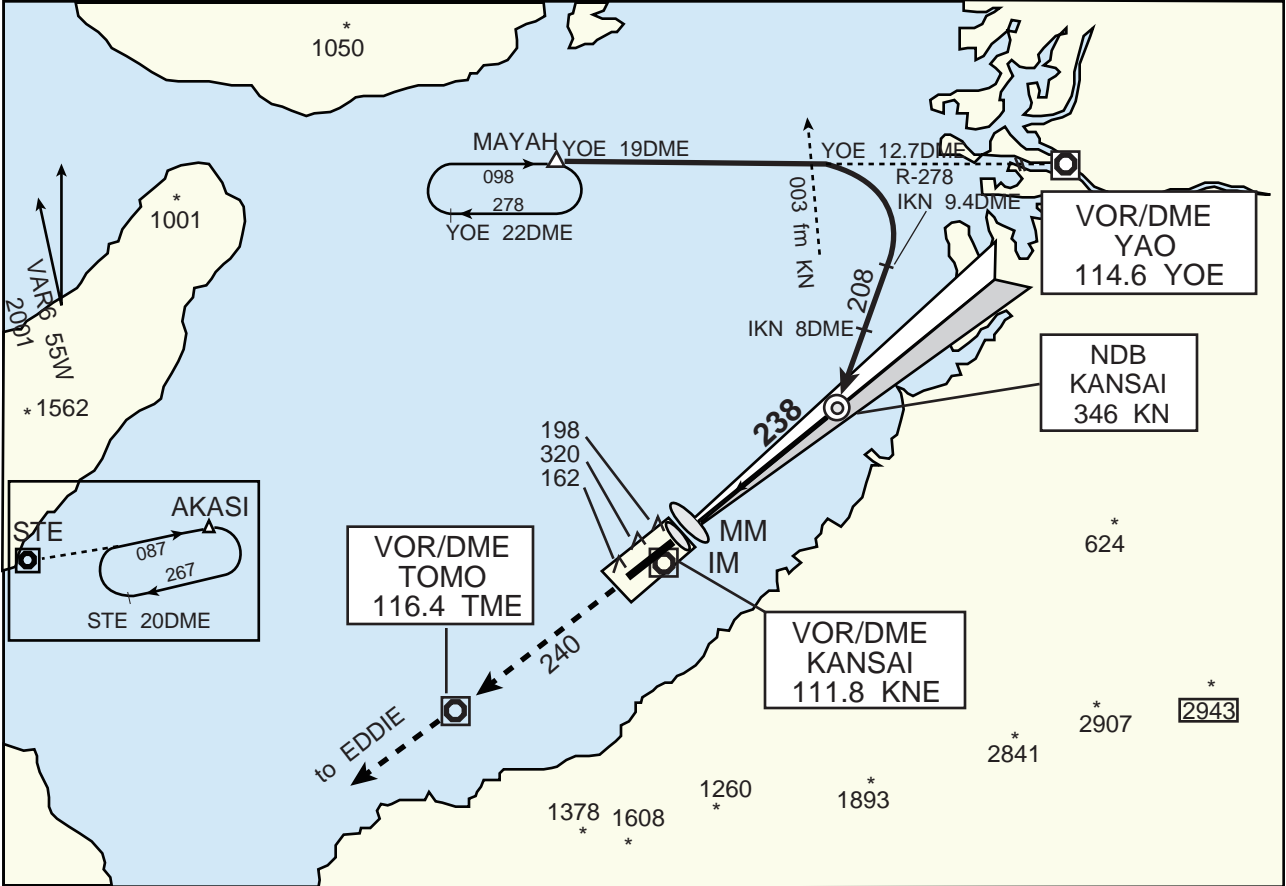
*Circling to North side of RWY only.

Remarks : RA150'-DA166' for the operations on operational evaluation phases prior to Category II operations

RJBB

KANSAI ILS RWY 24

<p>KANSAI APP 120.25-125.5 258.3</p>	<p>ILS-LLZ 110.7 IKN ILS-GP 330.2 ILS-DME CH-44</p>	<p>KANSAI TOWER 118.2-126.2 236.8</p>	<p>RADAR AVAILABLE ATIS 127.85</p>
--	---	---	---



<p>MINIMA</p>	<p>FIELD ELEV 15FT TDZ ELEV 26FT</p>
---------------	--

CAT II	STA TO RWY 24			(GP OUT)		CIRCLING* MDA-VIS
	ILS		PALS OUT	MDA 400'		
RA 100' DA 126'	DA 226'				PALS AVBL	PALS OUT
A						620'-1600m
B	RVR 350m	RVR 550m VIS 800m	RVR 800m VIS 800m	RVR1200m VIS1200m	RVR1200m VIS1200m	620'-2400m
C						
D					RVR1600m VIS1600m	620'-3200m

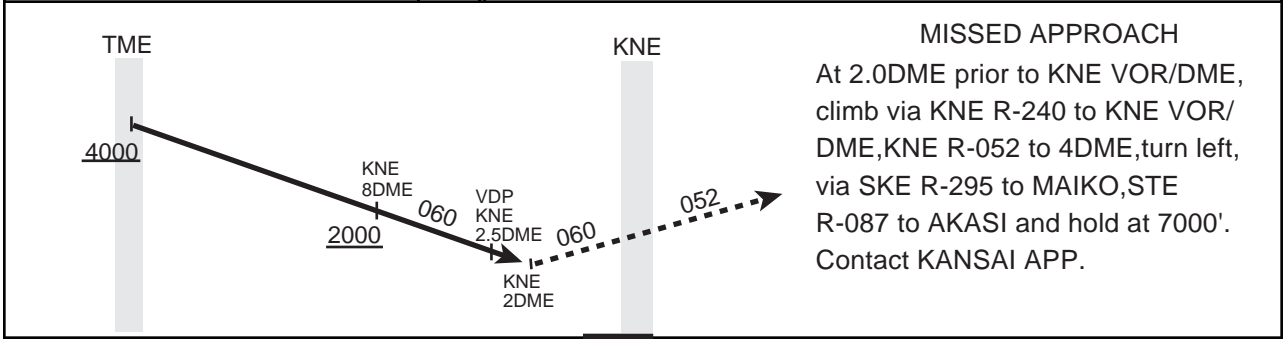
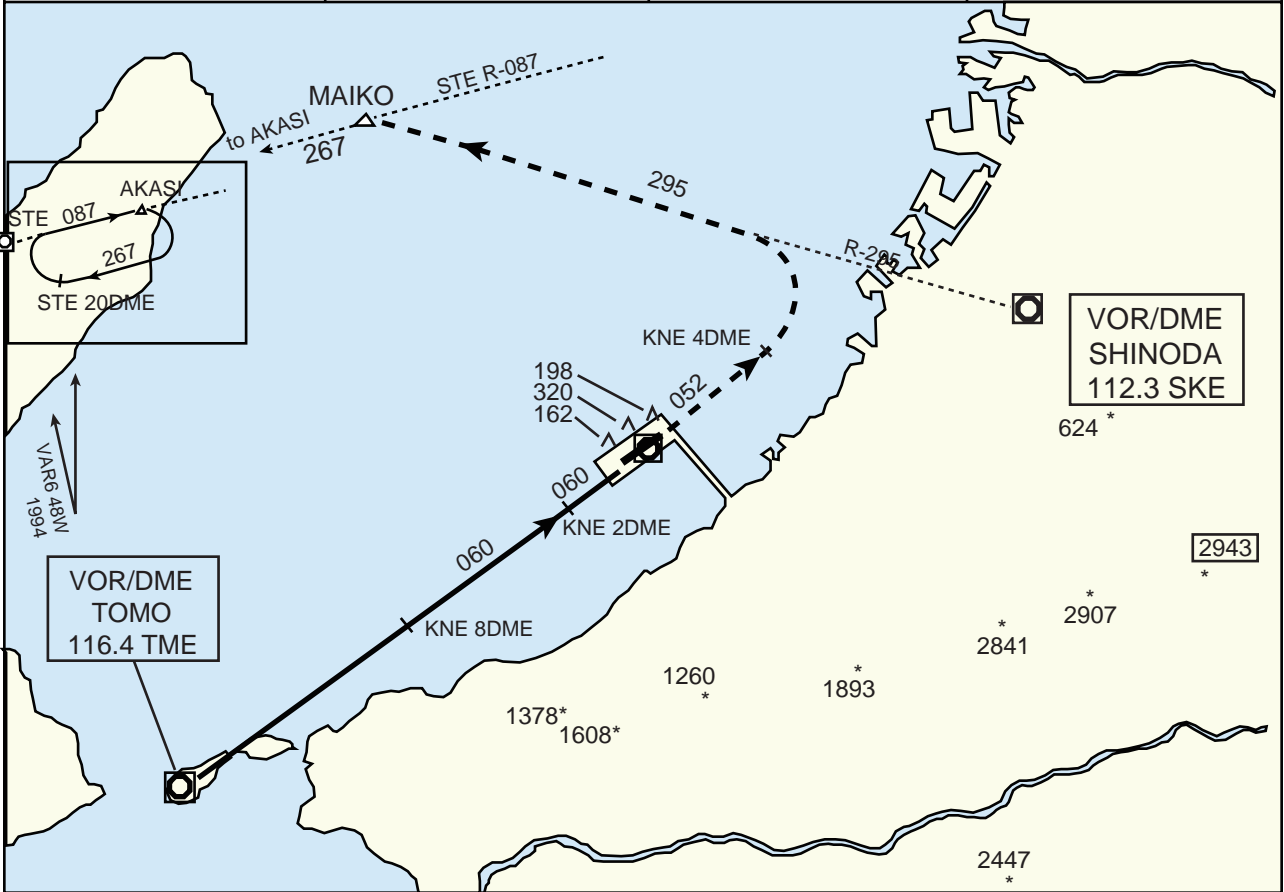
*Circling to North side of RWY only.

Remarks : RA150'-DA176' for the operations on operational evaluation phases prior to Category II operations

RJBB

KANSAI VOR/DME RWY 06

<p>KANSAI APP 120.25-125.5 258.3</p>	<p>KANSAI VOR/DME 111.8 KNE 35256N/135153E</p>	<p>KANSAI TOWER 118.2-126.2 236.8</p>	<p>RADAR AVAILABLE ATIS 127.85</p>
--	--	---	--



MISSED APPROACH
At 2.0DME prior to KNE VOR/DME, climb via KNE R-240 to KNE VOR/DME, KNE R-052 to 4DME, turn left, via SKE R-295 to MAIKO, STE R-087 to AKASI and hold at 7000'. Contact KANSAI APP.

<p>MINIMA</p>	<p>FIELD ELEV 15FT</p>
---------------	------------------------

	STA TO RWY 06 MDA 460'		CIRCLING*
	PALS AVBL	PALS OUT	MDA-VIS
A		RVR 1600m	620'-1600m
B	RVR 1200m VIS 1200m	VIS 1600m	620'-1600m
C		VIS 1700m	620'-2400m
D	RVR 1400m VIS 1400m	VIS 2300m	620'-3200m

*Circling to North side of RWY only.

EDDIE ARRIVAL

From over EDDIE, proceed via TME R-234 to PEACH.
Cross PEACH at or above 4000FT

AKASI ARRIVAL

From over AJE VOR/DME, proceed via AJE R-013 to AKASI, via 087 DEG to
RK NDB to MAIKO, VIA YOE R-278 to MAYAH.
Cross MAYAH at 4000FT.

LILAC ARRIVAL

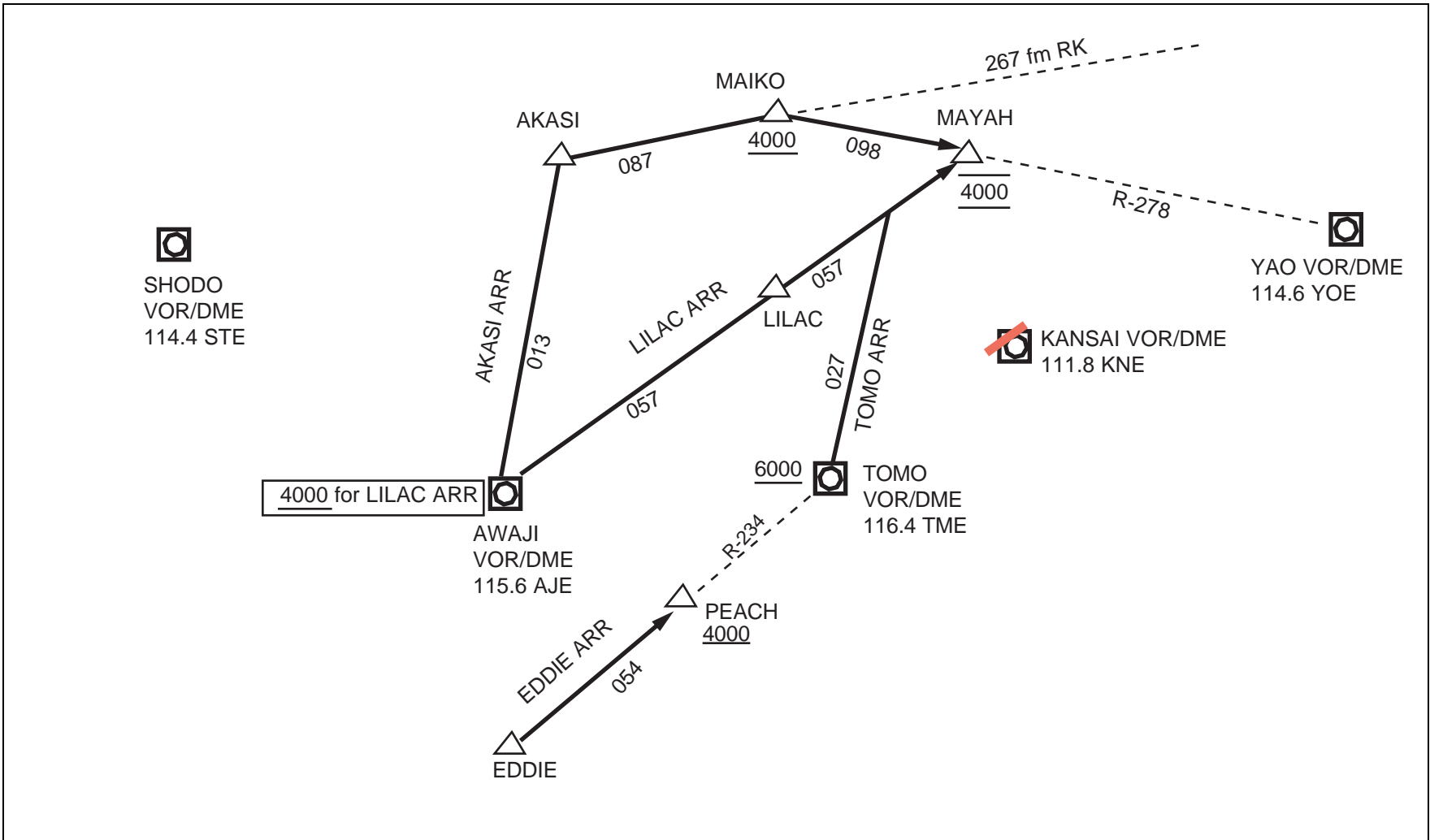
From over AJE VOR/DME, proceed via AJE R-057 to LILAC, then via AJE R-
057 to MAYAH.
Cross MAYAH at 4000FT.

TOMO ARRIVAL

From over TME VOR/DME, via TME R-027 to intercept and proceed via AJE
R-057 to MAYAH.
Cross TME VOR/DME at or above 6000FT, cross MAYAH at 4000FT.

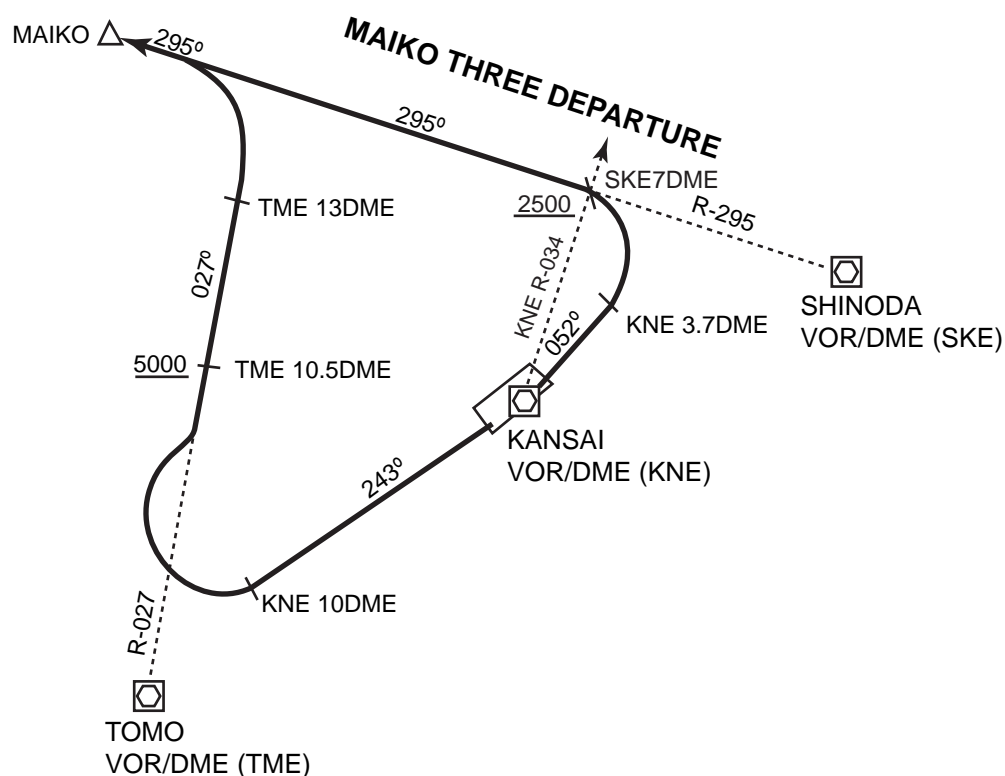
RJBB

KANSAI STAR



MAIKO THREE DEPARTURE

- RWY06 : Climb via KNE R-052 to 3.7DME, turn left and proceed via SKE R-295 to MAIKO.
Cross SKE R-295/7DME (KNE R-034) at or above 2,500FT.
- RWY24 : Climb via KNE R-243 to 10.0DME, turn right and proceed via TME R-027 to 13DME, then turn left and proceed via SKE R-295 to MAIKO.
Cross TME R-027/10.5DME at or above 5,000FT.



LINDA TWO DEPARTURE

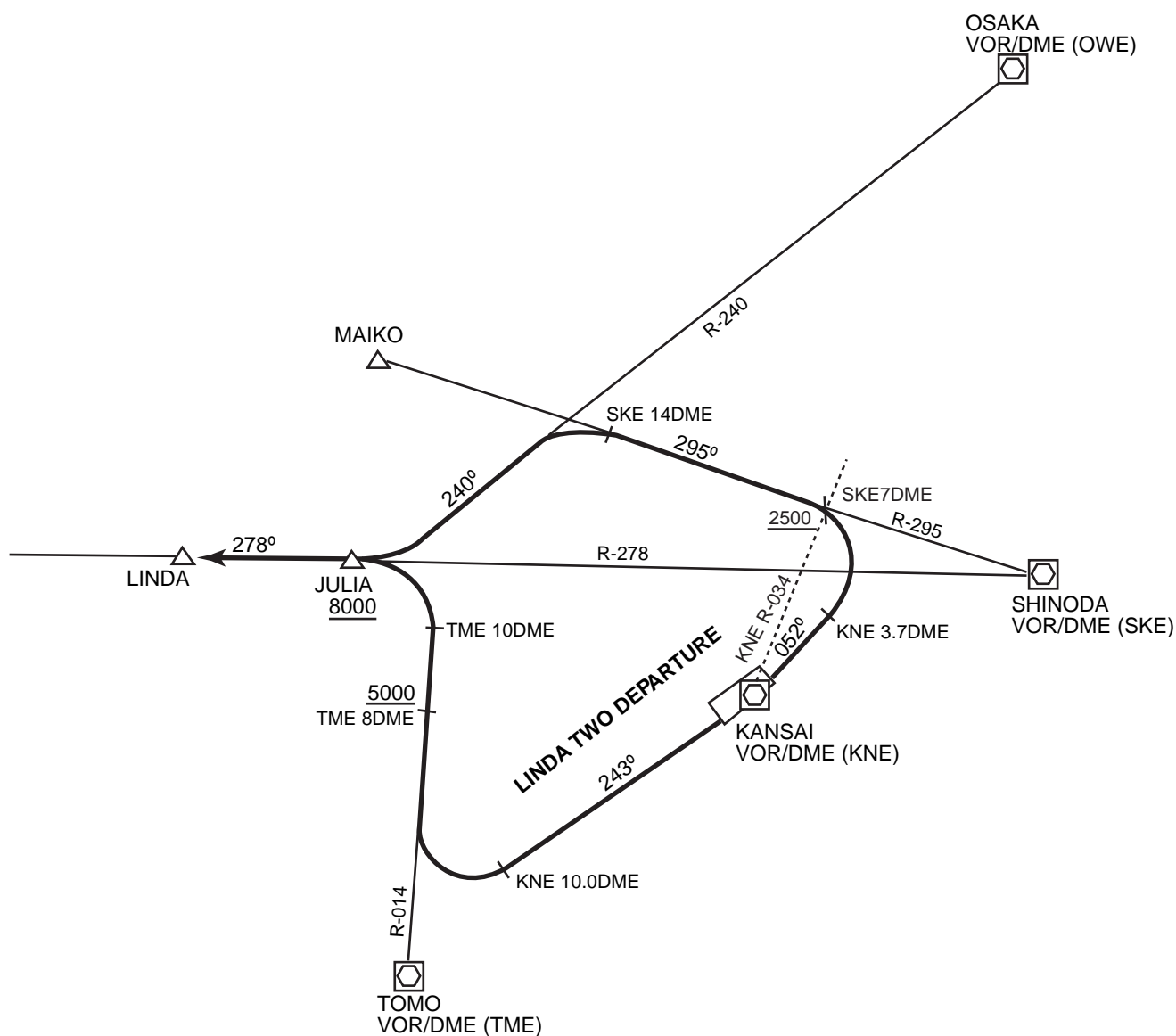
RWY06 : Climb via KNE R-052 to 3.7DME, turn left via SKE R-295 to 14DME then turn left via OWE R-240 to intercept and proceed via SKE R-278 to LINDA via JULIA...

Cross SKE R-295/7DME (KNE R-034) at or above 2,500FT...

RWY24 : Climb via KNE R-243 to 10.0DME, turn right and proceed via TME R-014 to 10DME, then turn left via SKE R-278 to LINDA JULIA....

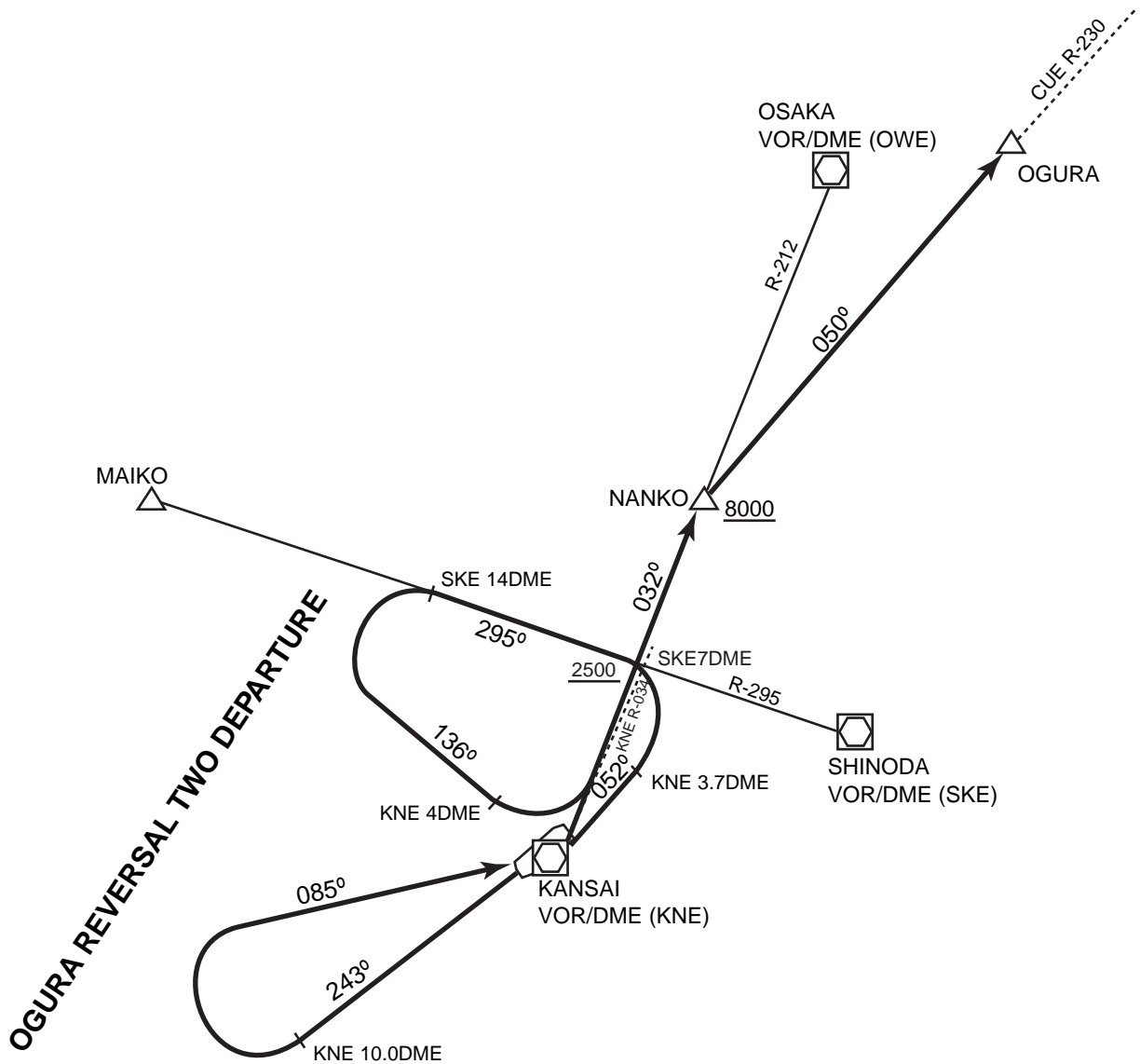
... Cross TME R-014/8DME at or above 5,000FT

.... Cross JULIA at or above 8,000FT



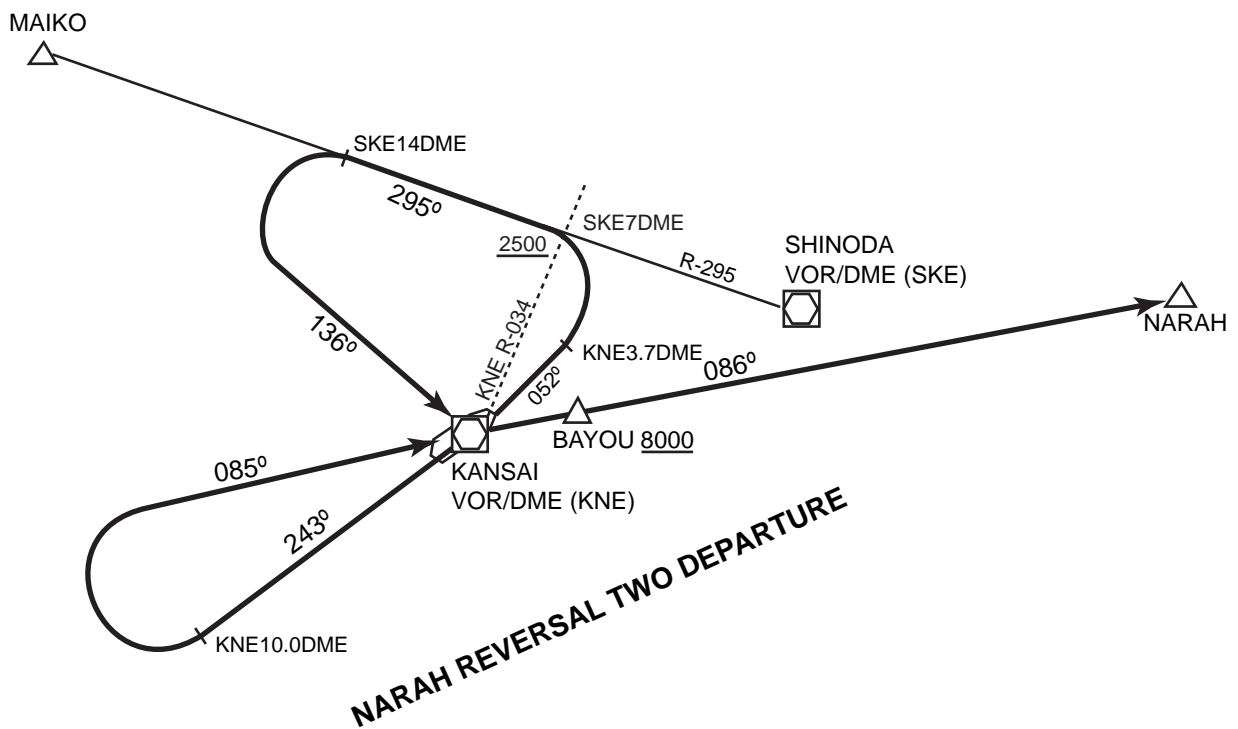
OGURA REVERSAL TWO DEPARTURE

- RWY06 : Climb via KNE R-052 to 3.7DME, turn left and proceed via SKE R-295 to 14DME, turn left via KNE R-316 to 4DME, turn left via KNE R-032 to NANKO, then via CUE R-230 to OGURA....
Cross SKE R-295/7DME (KNE R-034) at or above 2,500FT....
- RWY24 : Climb via KNE R-243 to 10.0DME, turn right and proceed via KNE R-265 to KNE VOR/DME via KNE R-032 to NANKO, then via CUE R-230 to OGURA....
...Cross NANKO at or above 8.000FT.



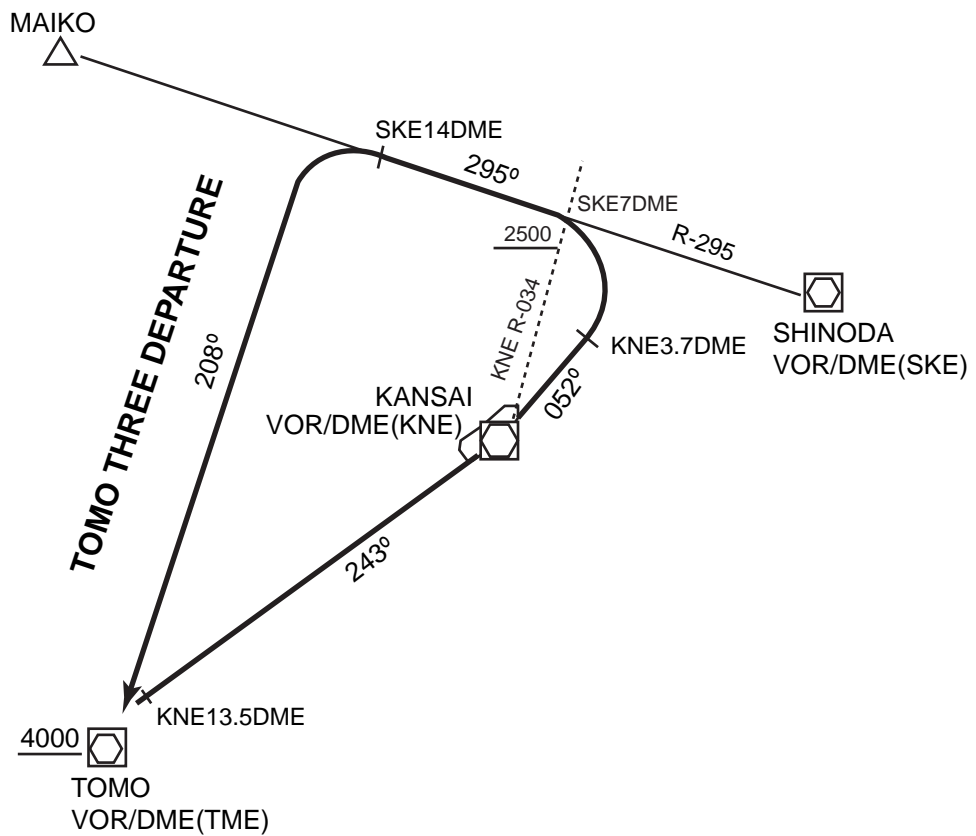
NARAH REVERSAL TWO DEPARTURE

- RWY06 : Climb via KNE R-052 to 3.7DME, turn left and proceed via SKE R-295 to 14DME, turn left via KNE R-316 to KNE VOR/DME, then via KNE R-086 to NARAH via BAYOU....
Cross SKE R-295/7DME (KNE R-034) at or above 2,500FT...
- RWY24 : Climb via KNE R-243 to 10.0DME, turn right and proceed via KNE R-265 to KNE VOR/DME then via KNE R-086 to NARAH via BAYOU....
...Cross BAYOU at or above 8,000FT.



TOMO THREE DEPARTURE

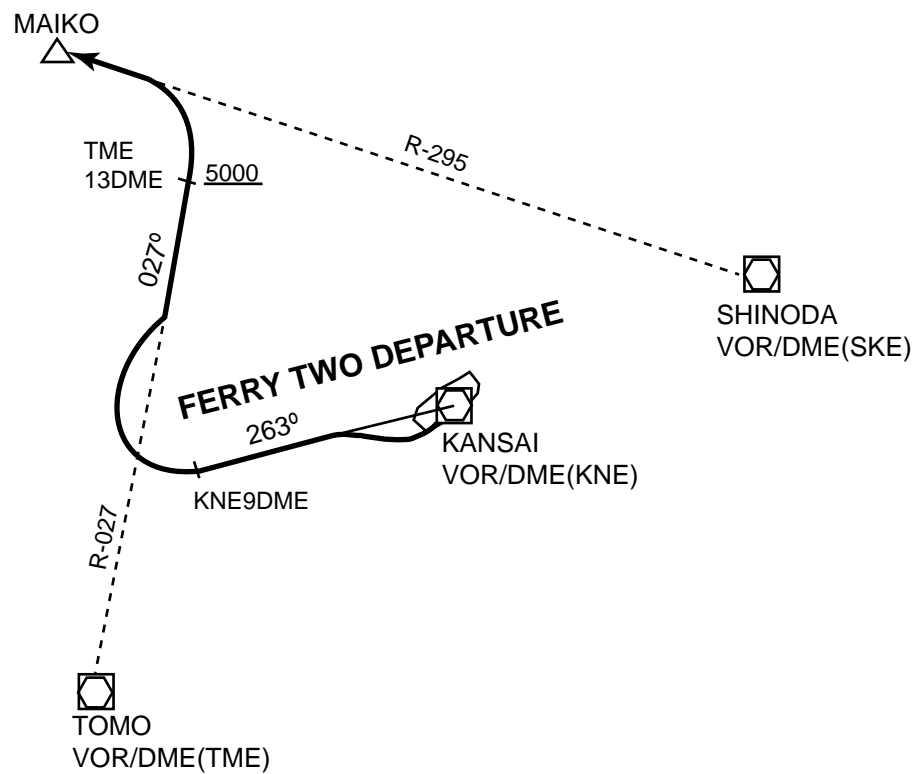
- RWY06 : Climb via KNE R-052 to 3.7DME, turn left and proceed via SKE R-295 to 14DME, turn left via TME R-028 to TME VOR/DME .
Cross SKE R-295/7DME (KNE R-034) at or above 2,500FT....
- RWY24 : Climb via KNE R-243 to 13.5DME, turn left to TME VOR/DME.
Cross TME VOR/DME at or above 4000FT.



FERRY TWO DEPARTURE

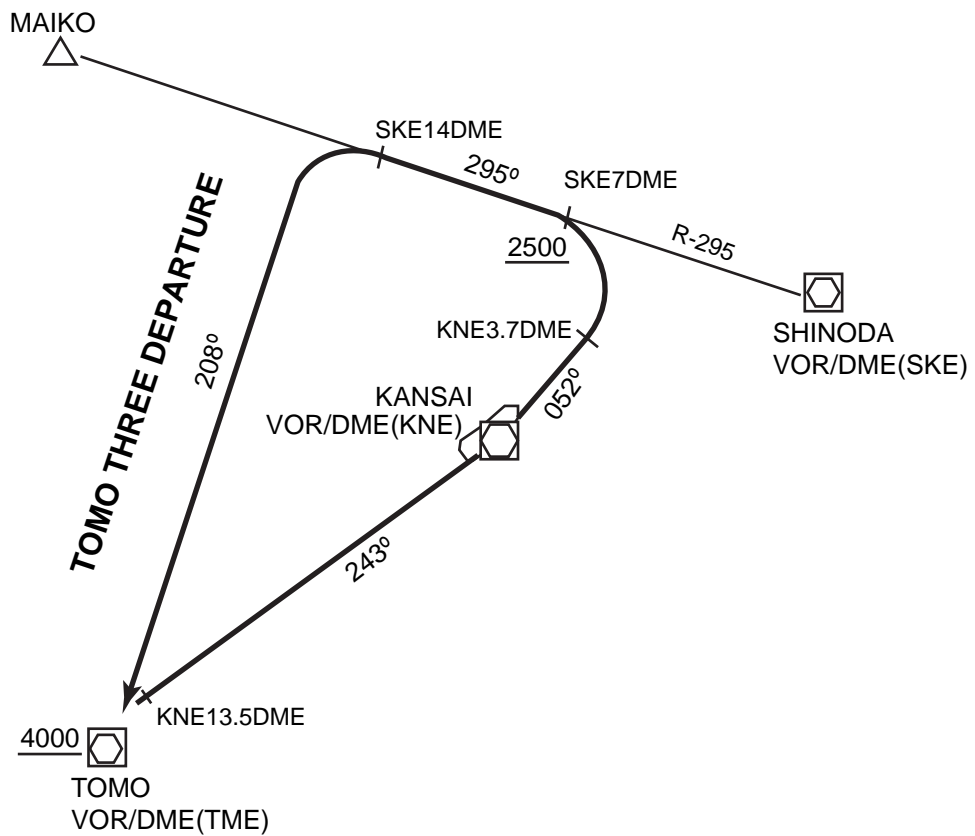
RWY24 : Turn right, climb via KNE R-263 to 9DME, turn right and proceed via TME R-027 to 13DME, then turn left and proceed via SKE R-295 to MAIKO.

Cross TME R-027/13DME at or above 5,000FT.



TOMO THREE DEPARTURE

- RWY06 : Climb via KNE R-052 to 3.7DME, turn left and proceed via SKE R-295 to 14DME, turn left via TME R-028 to TME VOR/DME .
Cross SKE R-295/7DME (KNE R-034) at or above 2,500FT,...
- RWY24 : Climb via KNE R-243 to 13.5DME, turn left to TME VOR/DME.
...Cross TME VOR/DME at or above 4000FT .



KAGAWA TRANSITION

After LINDA, proceed via KTE R-074 to GLORY or KTE VOR/DME.

KOCHI SOUTH TRANSITION

After TME VOR/DME, proceed via TME R-243/30DME, then KRE R-063 to KRE VOR/DME.

Cross TME R-243/30DME(KRE R-063/50DME) at or above 13,000FT, cross KRE R-063/26DME at or above FL160.

OTSU TRANSITION

After OGURA, via CUE R-230 to CUE VOR/DME.

KOWA TRANSITION

From over NARAH, via XMC R-266 to XMC VORTAC (083DEG to XM NDB).

KUSHIMOTO TRANSITION

After TME VOR/DME, proceed via TME R-174 to GBE VOR/DME, then via GBE R-136 to KEC VORTAC.

Cross GBE VOR/DME at or above 6,000FT.

SAYOH TRANSITION

After MAIKO, proceed via SKE R-295 to OLIVE, turn right via AJE R-343 to SAYOH.

Cross OLIVE at or above 10,000FT.

