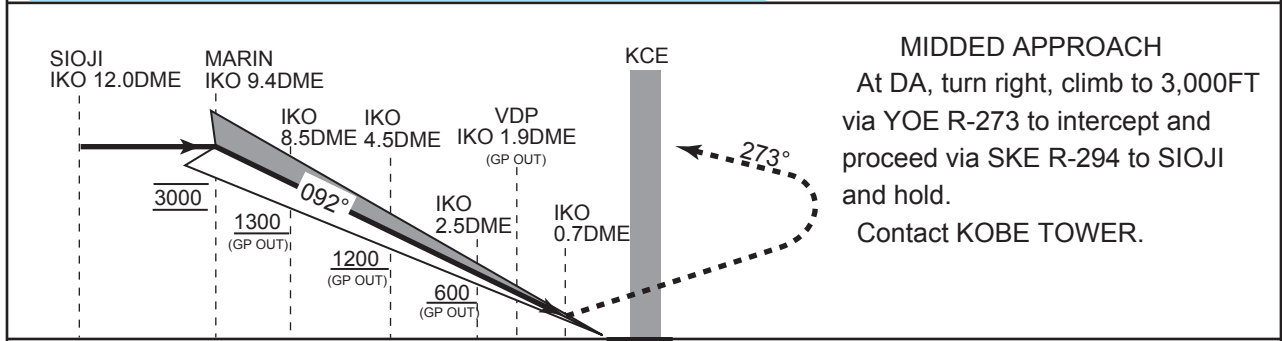
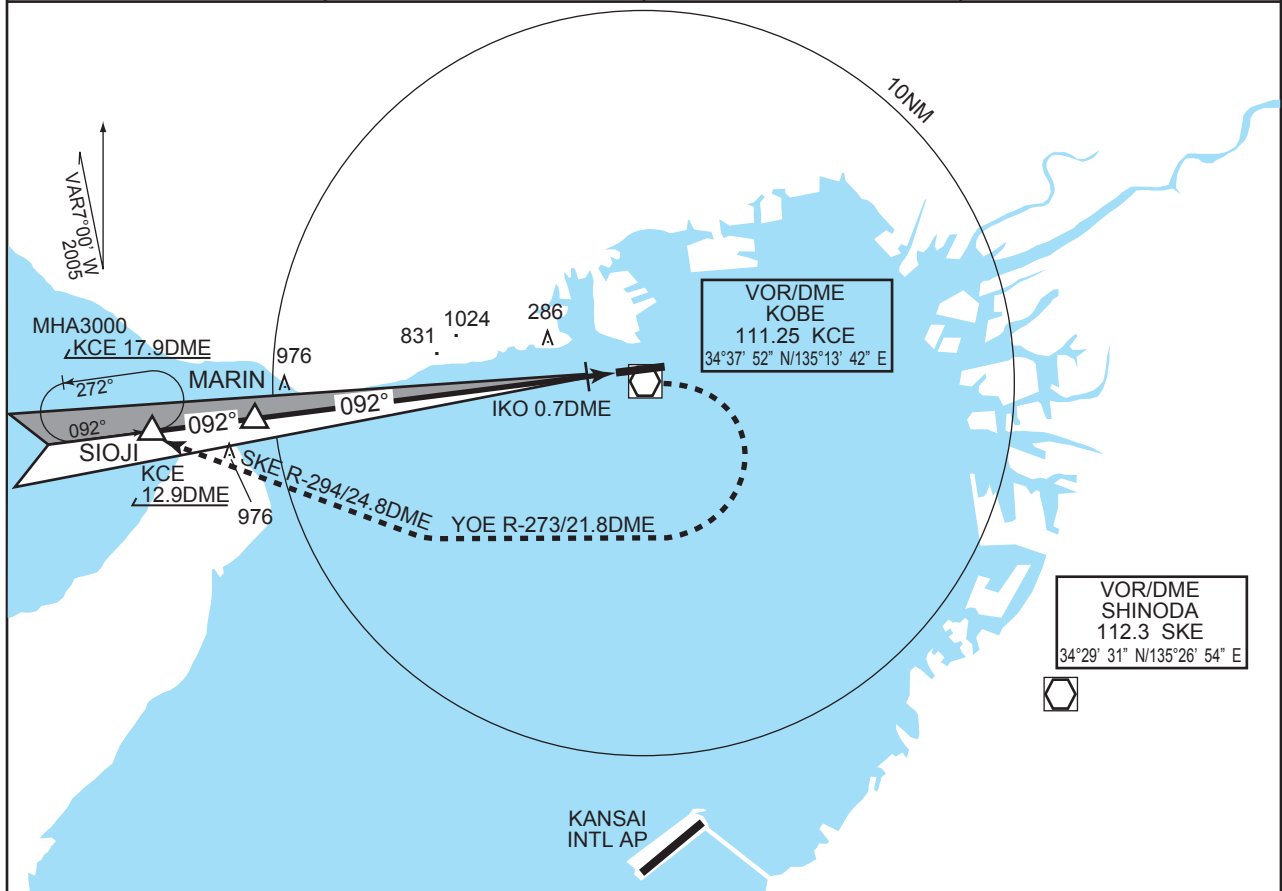


| | | | |
|---|--|-----------------------------|---------------------------------|
| KANSAI RADAR 121.15 - 125.5 261.2 | ILS - LLZ 109.15 IKO ILS-GP 331.25 ILS-DME CH-28Y | KOBE TOWER 118.5 - 126.2 | RADAR AVAILABLE ATIS 128.075 |
|---|--|-----------------------------|---------------------------------|



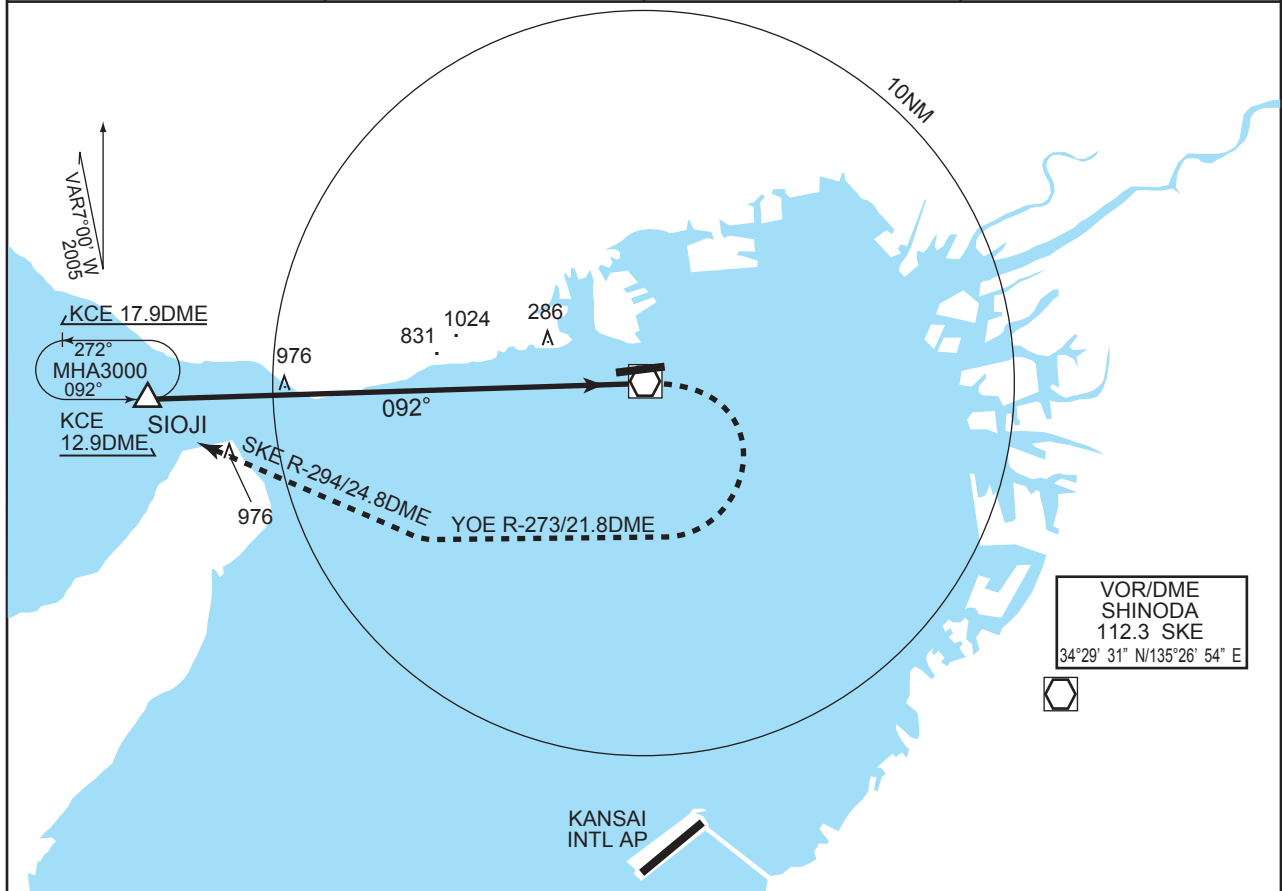
MIDDED APPROACH
 At DA, turn right, climb to 3,000FT via YOE R-273 to intercept and proceed via SKE R-294 to SIOJI and hold.
 Contact KOBE TOWER.

| | |
|--------|----------------------------------|
| MINIMA | FIELD ELEV 22ft TDZ ELEV 27ft |
|--------|----------------------------------|

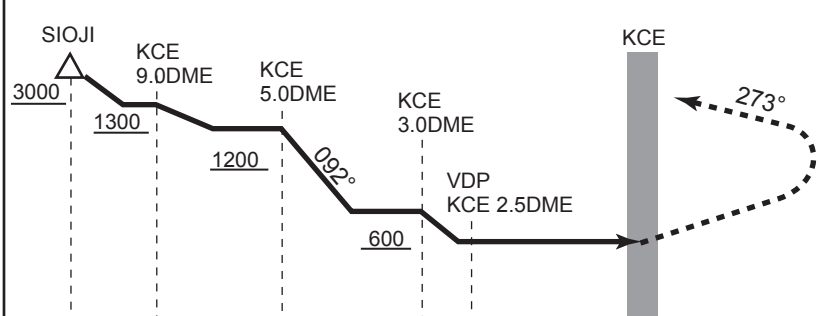
| | STA TO RWY 09 | | | | | CIRCLING* |
|---|----------------------|----------------------|------------------------|------------------------|------------------------|--------------|
| | ILS | | | (GP OUT) | | |
| | RTZL & RCLL AVBL | RTZL &/or RCLL OUT | PALS OUT | PALS AVBL | PALS OUT | MDA-VIS |
| A | | | | RVR 1200m VIS 1200m | RVR 1400m VIS 1400m | 560' - 1600m |
| B | RVR 550m VIS 800m | RVR 800m VIS 800m | RVR 1200m VIS 1200m | RVR 1200m VIS 1200m | RVR 1600m VIS 1600m | |
| C | | | | | VIS 2100m | 560' - 2400m |
| D | | | | RVR 1600m VIS 1600m | VIS 2900m | 580' - 3200m |

*Circling to South side of RWY only.

| | | | |
|--|---|-------------------------------------|---|
| <p>KANSAI RADAR 121.15 - 125.5 261.2</p> | <p>KOBE VOR/DME 111.25 KCE 34°37' 52" N/135°13' 42" E</p> | <p>KOBE TOWER 118.5 - 126.2</p> | <p>RADAR AVAILABLE ATIS 128.075</p> |
|--|---|-------------------------------------|---|



VOR/DME
SHINODA
112.3 SKE
34°29' 31" N/135°26' 54" E



MIDDED APPROACH
At KCE VOR/DME, turn right, climb to 3,000FT via YOE R-273 to intercept and proceed via SKE R-294 to SIOJI and hold. Contact KOBE TOWER.

| | | |
|---------------|--|------------------------|
| <p>MINIMA</p> | | <p>FIELD ELEV 22ft</p> |
|---------------|--|------------------------|

| <p>STA TO RWY 09 MDA 560'</p> | | <p>CIRCLING* MDA-VIS</p> | |
|-----------------------------------|--------------------------------|------------------------------|--|
| <p>PALS AVBL</p> | <p>PALS OUT</p> | | |
| <p>A</p> | | <p>560' - 1600m</p> | |
| <p>B</p> | <p>RVR 1200m VIS 1200m</p> | | |
| <p>C</p> | <p>VIS 2100m</p> | <p>560' - 2400m</p> | |
| <p>D</p> | <p>RVR 1600m VIS 1600m</p> | <p>580' - 3200m</p> | |

*Circling to South side of RWY only.

ASANO ARRIVAL

From over ASANO, turn left, intercept and proceed via SKE R-294....

ILS RWY09 : to SIOJI via TRACY. Then via IKO-LLZ to MARIN.

Cross SKE R-294/ 41DME at or above 6,000FT. cross SIOJI at or above 3,000FT.

VOR/DME RWY09 :to SIOJI via TRACY.

Cross SKE R-294/ 41DME at or above 6,000FT, cross SIOJI at or above 3,000FT.

AWAJI ARRIVAL

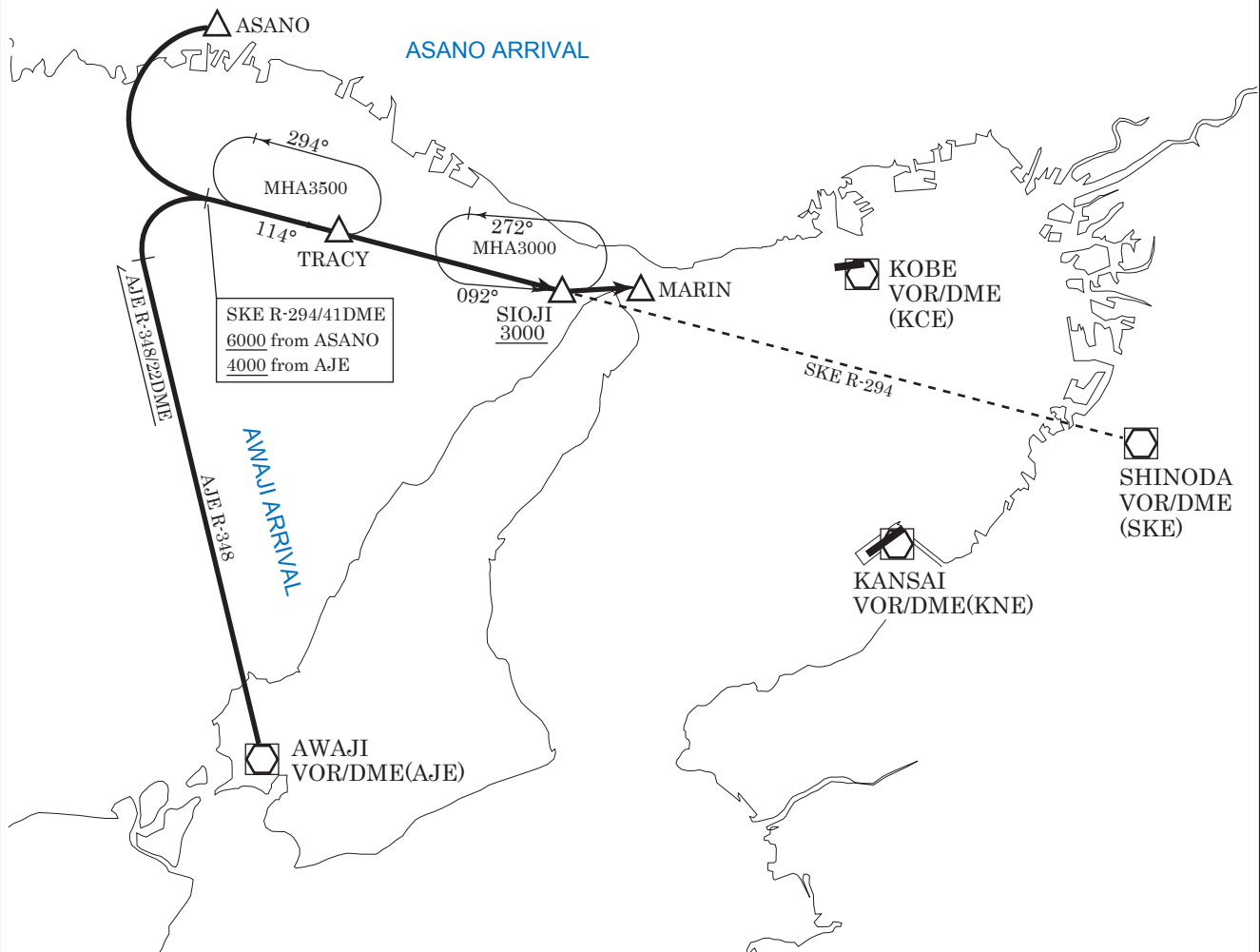
From over AJE VOR/DME, via AJE R-348 to AJE R-348/22DME, turn right to intercept and proceed via SKE R-294....

ILS RWY09 : to SIOJI via TRACY. Then via IKO-LLZ to MARIN.

Cross SKE R-294/ 41DME at or above 6,000FT. cross SIOJI at or above 3,000FT.

VOR/DME RWY09 :to SIOJI via TRACY.

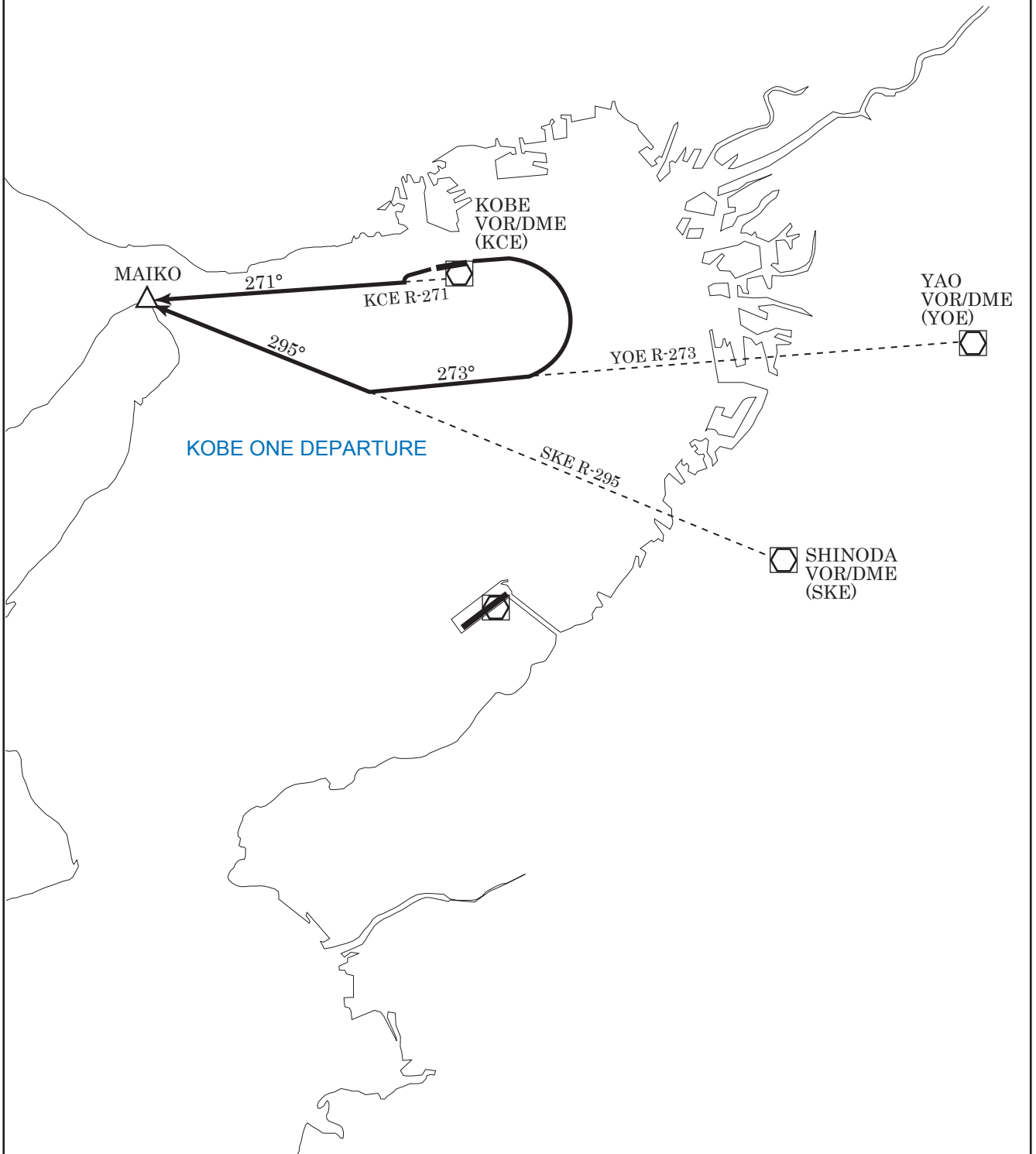
Cross SKE R-294/ 41DME at or above 6,000FT, cross SIOJI at or above 3,000FT.



KOBE ONE DEPARTURE

RWY09: Turn right, climb via YOE R-273 to intercept and proceed via SKE R-295 to MAIKO.

RWY27: Turn left, climb via KCE R-271 to MAIKO.



OTSU TRANSITION

From over MAIKO, proceed via KCE R-271 to EJIMA, then via AJE R-343 to OLIVE, then via STE R-038 to GODON, proceed via CUE R-278 to CUE VOR/DME.

Cross OLIVE at or above 11,000FT.

TAMBA TRASITION

From over MAIKO, proceed via KCE R-271 to EJIMA, then via AJE R-343 to OLIVE, then via STE R-038 to TAMBA.

Cross OLIVE at or above 11,000FT.

SHODO TRANSITION

From over MAIKO, proceed via KCE R-271 to EJIMA, then via STE R-082 to STE VOR/DME.

