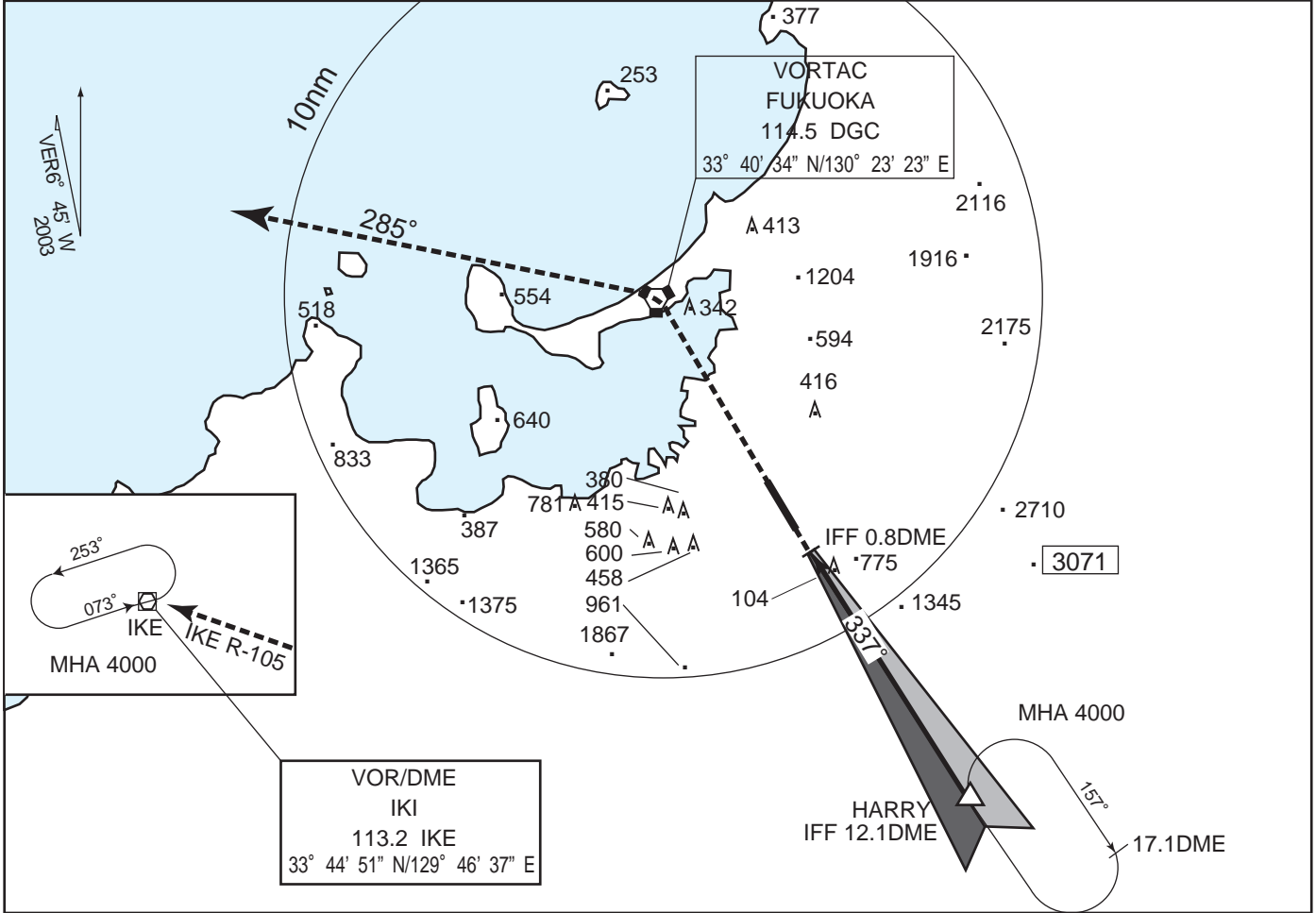
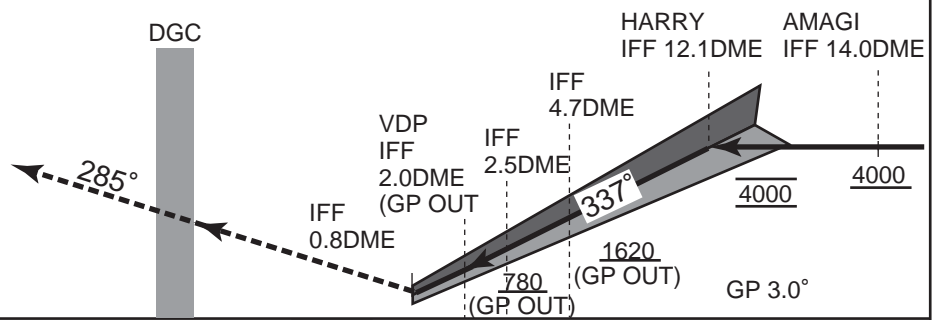


<p>FUKUOKA APP 119.1 - 119.65 - 120.7 261.2 - 270.8</p>	<p>ILS-LLZ 108.9 IFF ILS-GP 329.3 ILS-DME 987(CH-26X)</p>	<p>FUKUOKA TOWER 118.4 - 126.2 236.8</p>	<p>RADAR AVAILABLE ATIS 127.2</p>
---	---	--	---------------------------------------



ILS REFERENCE DATUM 53'

**MISSED APPROACH**  
At DA, climb to 4000' and proceed to DGC VORTAC, then turn left to intercept and proceed via IKE R-105 to IKE VOR/DME and hold.  
Contact FUKUOKA APP.



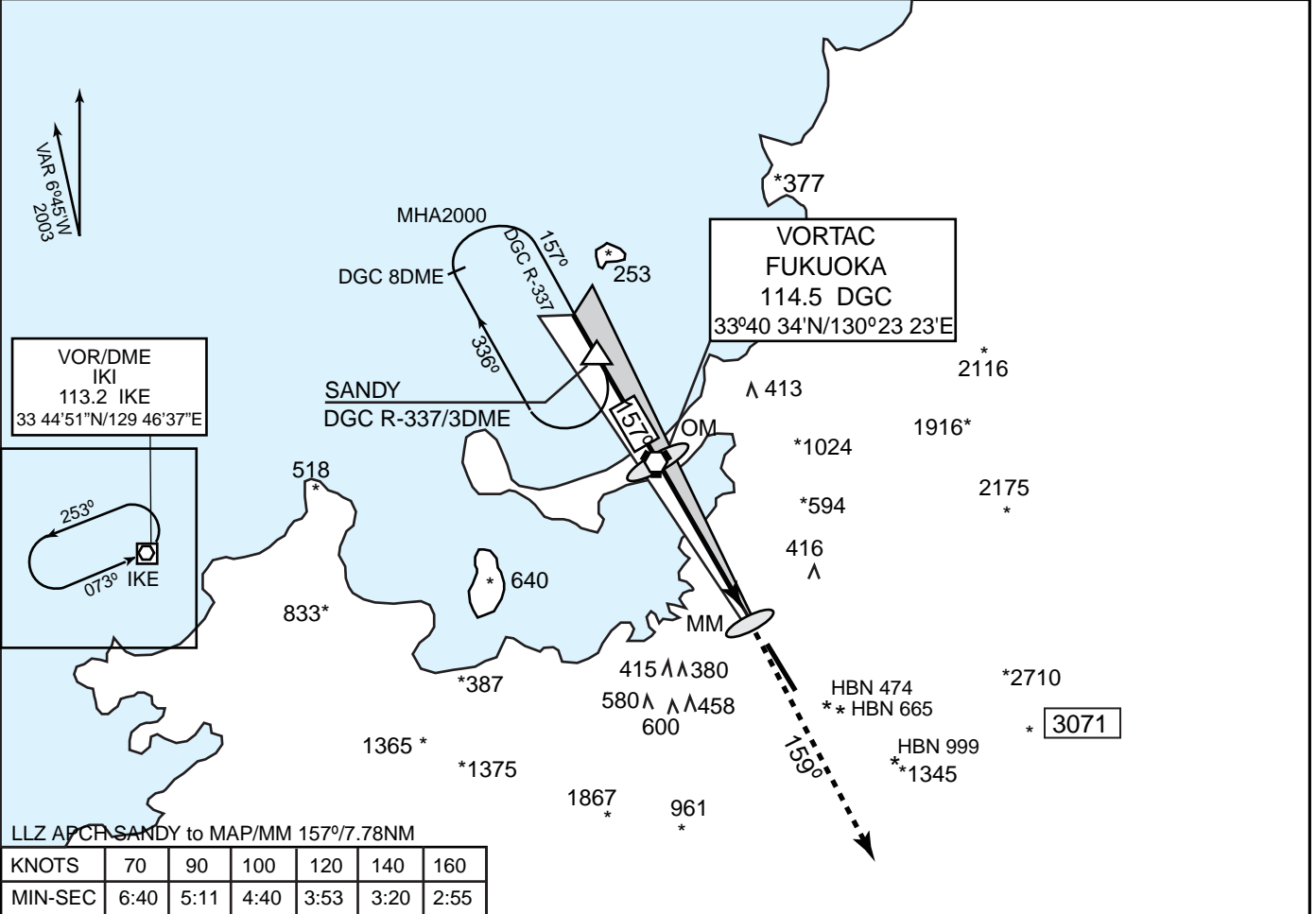
MINIMA

FIELD ELEV 30ft  
TDZ ELEV 32ft

	STA TO RWY 34				CIRCLING*	
	ILS		(GP OUT)			
	DA 297'		MDA 600'			
RTZL & RCLL AVBL	RTZL &/or RCLL OUT	PALS OUT	PALS AVBL	PALS OUT	MDA-VIS	
A				RVR 1200m VIS 1200m	RVR 1400m VIS 1400m	860' -1600m
B	RVR 800m VIS 800m	RVR 800m VIS 800m	RVR 1200m VIS 1200m	RVR 1200m VIS 1200m	VIS 1700m	860' -1700m
C					VIS 2200m	1020' -2400m
D				VIS 1800m	VIS 3100m	1040' -3200m

\*Circling to West side of RWY only.

FUKUOKA APP 119.1 - 119.65 - 120.7 127.9 - 261.2 - 270.8	ILS-LLZ 111.7 IFO ILS-GP 333.5	FUKUOKA TOWER 118.4 - 126.2 236.8	RADAR AVAILABLE ATIS 127.2
--	--------------------------------------	---	-------------------------------



ILS REFERENCE DATUM 58'

**MISSED APPROACH**  
At DA, climb via DGC R-159 to YAMEK, cross YAMEK at or above 5000', then turn right to intercept and proceed via IKE R-127 to IKE VOR/DME and hold at 6000'. Cross IKE R-127/37DME at 6000'. Contact FUKUOKA APP

SANDY DGC R-337 3DME

DGC OM

MM

2000

1834

157°

159°

MINIMA	FIELD ELEV 30ft TDZ ELEV 18ft
--------	----------------------------------

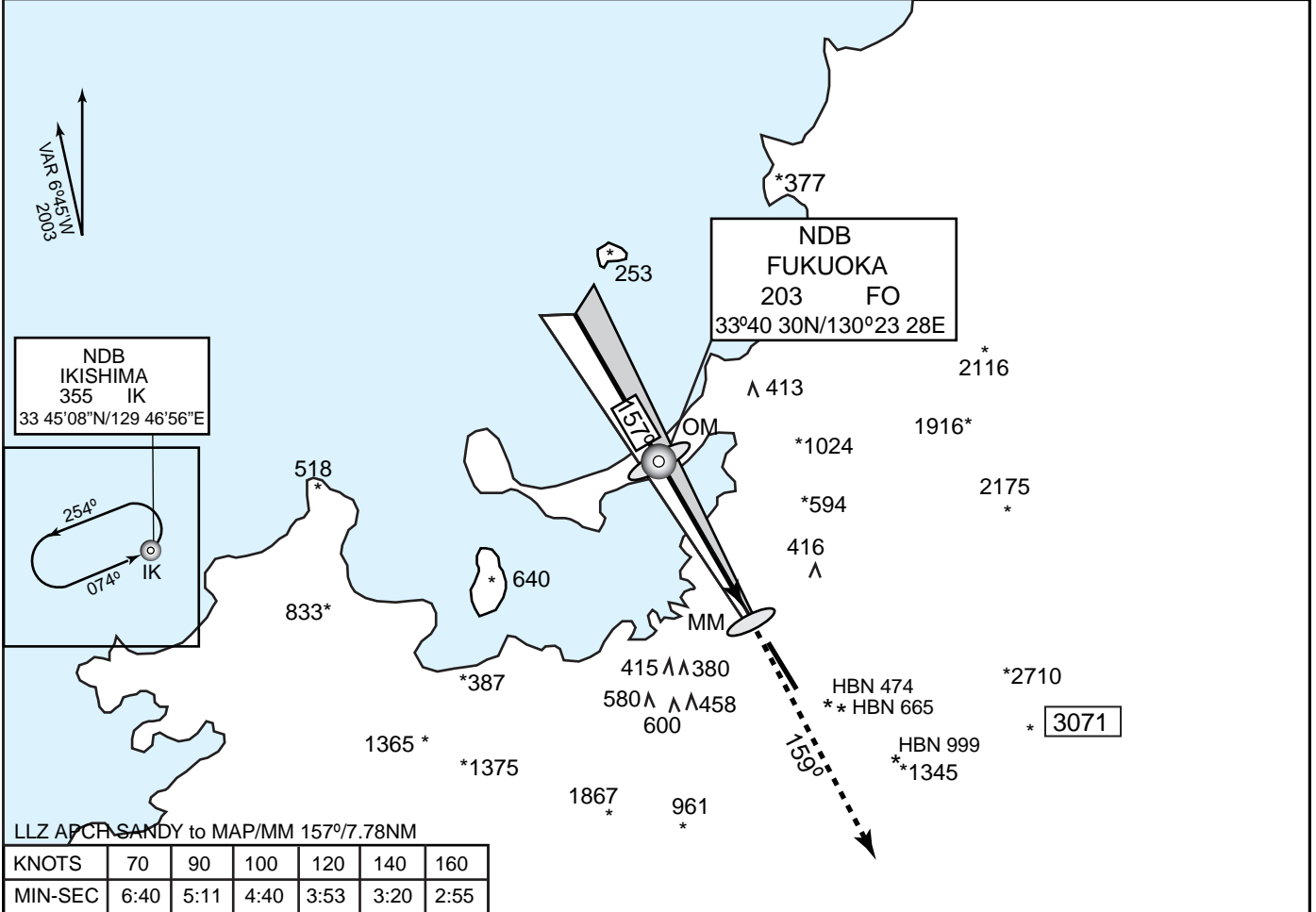
	STA TO RWY 16						CIRCLING*
	ILS			(GP OUT)			
	DA 287'		DA 287'	MDA 660'			MSA-VIS
RTZL & RCLL AVBL	RTZL &/or RCLL OUT	PALS OUT	MM OUT	PALS AVBL	PALS OUT		
A							860'-2000m
B	RVR 800m	RVR 800m	RVR 1200m	RVR 1000m	VIS 1200m	VIS 2100m	
C	VIS 800m	VIS 800m	VIS 1200m	VIS 1000m	VIS 1200m	VIS 2500m	1020'-2500m
D				RVR 1200m VIS 1200m	VIS 2100m	VIS 3400m	1040'-3400m

\*Circling to West side of RWY only

Aircraft executed missed approach shall keep following climb gradient until passing 1000ft

SPEED (KNOTS)	60	90	120	150	180	210
RATE (Feet/Min)	300	450	600	750	900	1050

FUKUOKA APP 119.1 - 119.65 - 120.7 127.9 - 261.2 - 270.8	ILS-LLZ 111.7 IFO ILS-GP 333.5	FUKUOKA TOWER 118.4 - 126.2 236.8	RADAR AVAILABLE ATIS 127.2
--	--------------------------------------	---	-------------------------------



ILS REFERENCE DATUM 58'

**MISSED APPROACH**  
At DA, climb via DGC R-159 to YAMEK, cross YAMEK at or above 5000', then turn right to intercept and proceed via IKE R-127 to IKE VOR/DME and hold at 6000'. Cross IKE R-127/37DME at 6000'. Contact FUKUOKA APP

MINIMA	FIELD ELEV 30ft TDZ ELEV 18ft
--------	----------------------------------

	STA TO RWY 16						CIRCLING*
	ILS			(GP OUT)			
	DA 287'		DA 287'	MDA 660'			
	RTZL & RCLL AVBL	RTZL &/or RCLL OUT	PALS OUT	MM OUT	PALS AVBL	PALS OUT	MSA-VIS
A							860'-2000m
B	RVR 800m	RVR 800m	RVR 1200m	RVR 1000m	VIS 1200m	VIS 2100m	
C	VIS 800m	VIS 800m	VIS 1200m	VIS 1000m	VIS 1200m	VIS 2500m	1020'-2500m
D				RVR 1200m VIS 1200m	VIS 2100m	VIS 3400m	1040'-3400m

\*Circling to West side of RWY only

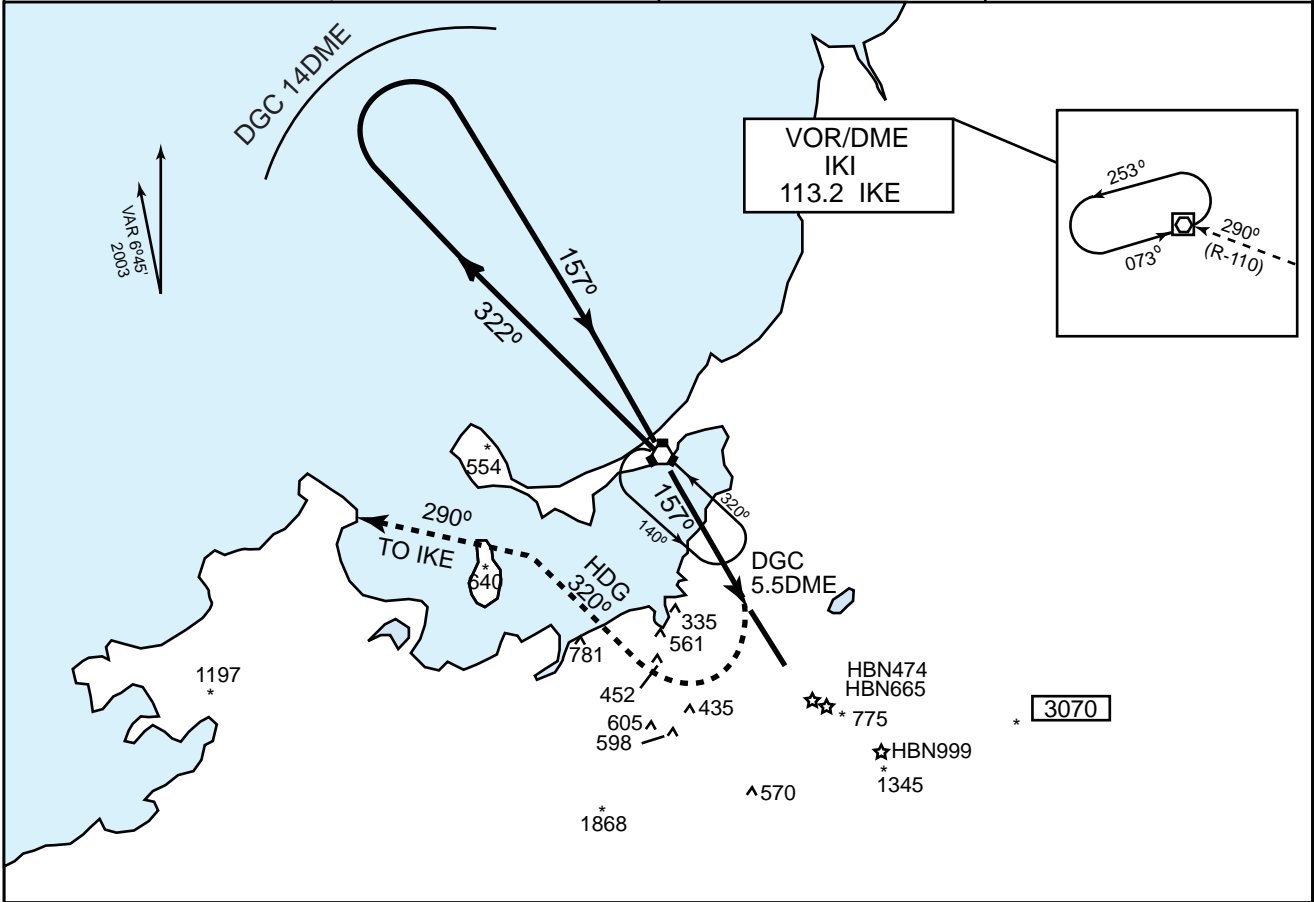
Aircraft executed missed approach shall keep following climb gradient until passing 1000ft

SPEED (KNOTS)	60	90	120	150	180	210
RATE (Feet/Min)	300	450	600	750	900	1050

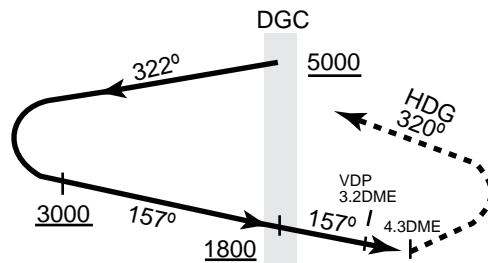
RJFF

FUKUOKA VOR/DME RWY16

FUKUOKA APP 119.1-119.65-120.7 127.9-261.2-270.8	FUKUOKA VORTAC 114.5 DGC 33°40.4'N/130°23.5'E	FUKUOKA TOWER 118.4-126.2 236.8	RADAR AVAILABLE ATIS 127.2
--	---	---------------------------------------	-------------------------------



Remain within 14nm



**MISSED APPROACH**  
At 4.3DME after passing DGC VORTAC, turn right climb to 4000' via heading 320° to intercept and proceed via IKE R-110 to IKE VOR/DME and hold. Contact FUKUOKA APP.

MINIMA

FIELD ELEV 30ft

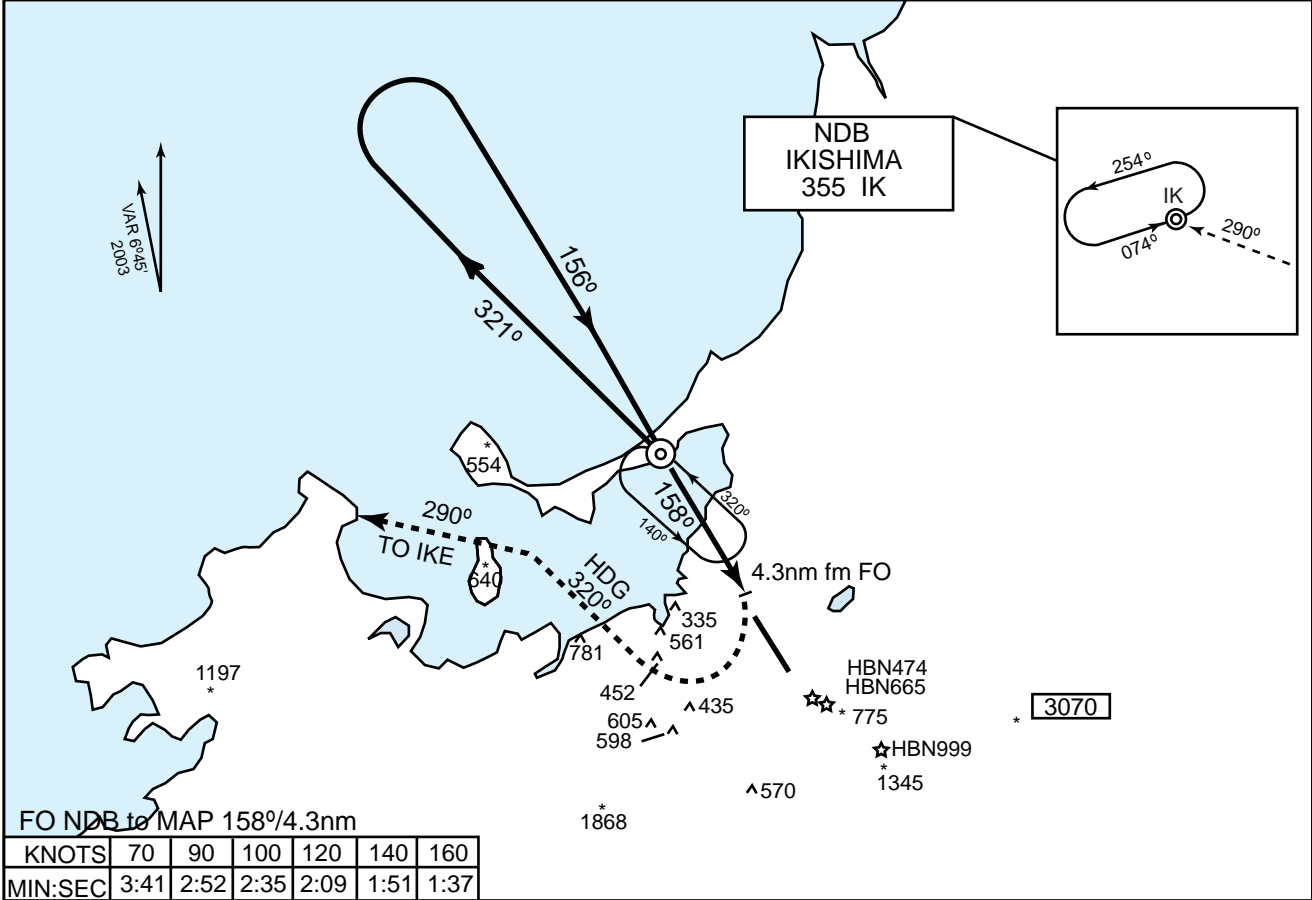
	STA TO RWY16 MDA 800'		CIRCLING* MDA-VIS
	ALS AVBL	ALS OUT	
A	RVR 1200m	VIS 2200m	860' - 2200m
B	VIS 1200m	VIS 2400m	860' - 2400m
C	VIS 1900m	VIS 3100m	1020' - 3100m
D	VIS 3000m	VIS 4200m	1040' - 4200m

\* Circling to West side of RWY only.

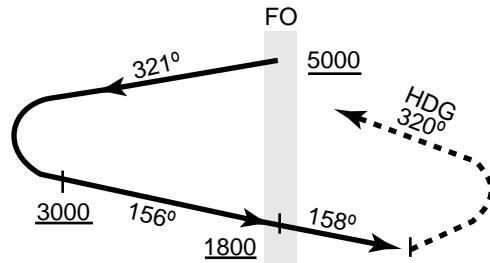
RJFF

FUKUOKA ADF RWY16

<p>FUKUOKA APP 119.1-119.65-120.7 127.9-261.2-270.8</p>	<p>FUKUOKA NDB 203 FO 33°40.3'N/130°23.6'E</p>	<p>FUKUOKA TOWER 118.4-126.2 236.8</p>	<p>RADAR AVAILABLE ATIS 127.2</p>
---	--	--	---------------------------------------



Remain within 14nm



**MISSED APPROACH**  
At 4.3nm after passing FO NDB, turn right climb to 4000' via heading 320° to intercept and proceed via 290° to IK NDB and hold. Contact FUKUOKA APP.

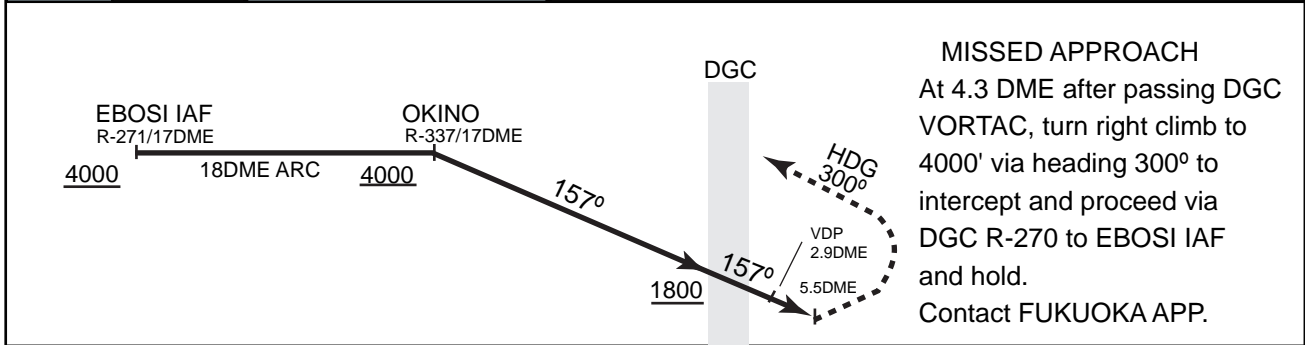
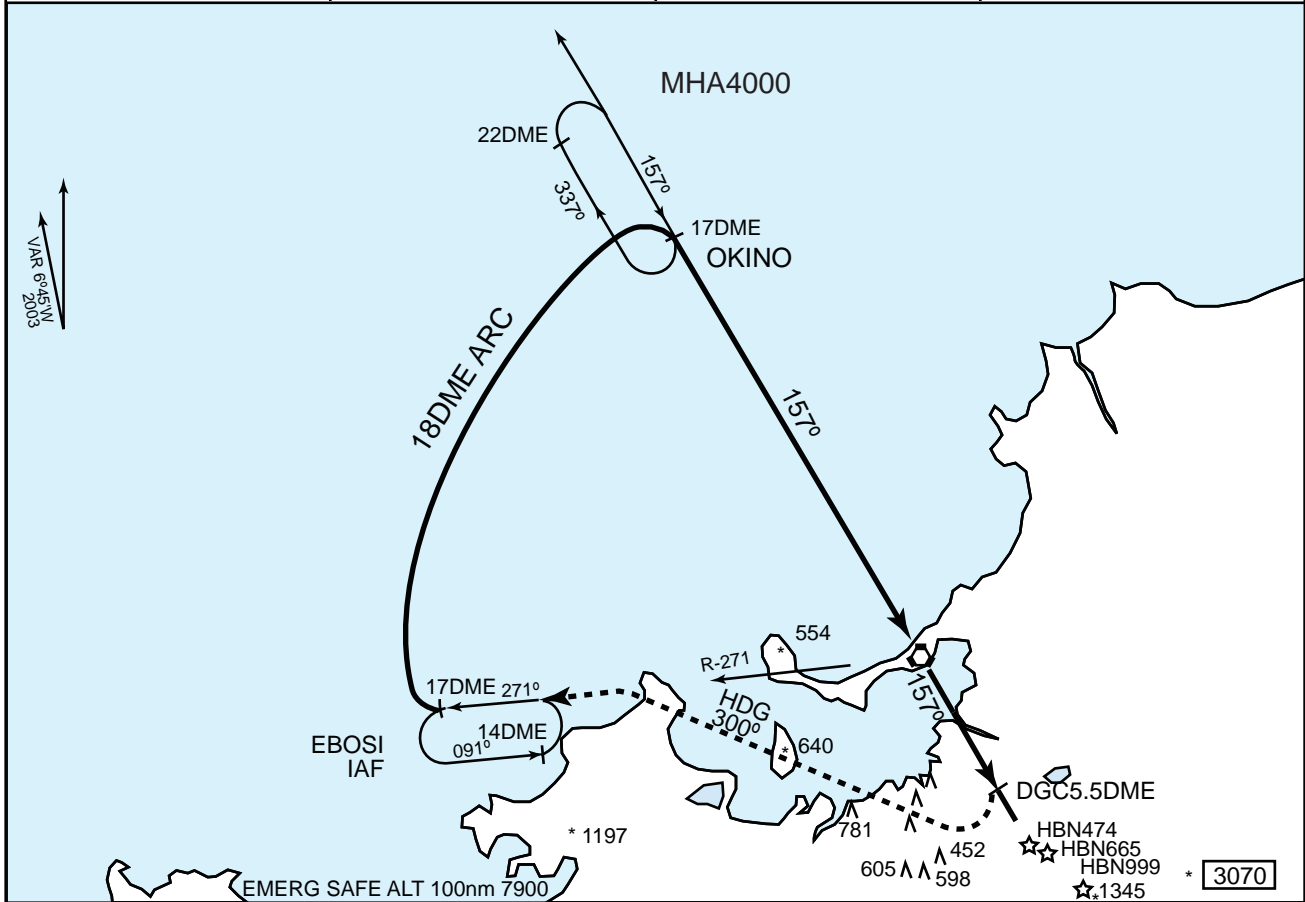
MINIMA			FIELD ELEV 30ft
	STA TO RWY16 MDA 800'		CIRCLING*
	ALS AVBL	ALS OUT	MDA-VIS
A	RVR 1400m VIS 1400m	VIS 2200m	880' - 2200m
B	RVR 1600m VIS 1600m	VIS 2700m	880' - 2700m
C	VIS 2200m	VIS 3500m	1020' - 3500m
D	VIS 3500m	VIS 4700m	1040' - 4700m

\* Circling to West side of RWY only.

RJFF

FUKUOKA TACAN RWY 16

FUKUOKA APP 119.1 - 119.65 - 120.7 127.9 - 261.2 - 270.8	FUKUOKA VORTAC 114.5 DGC 33°40.4'N/130°23.5'E	FUKUOKA TOWER 118.4 - 126.2 236.8	RADAR AVAILABLE ATIS 127.2
--	---	---	-------------------------------



MINIMA		FIELD ELEV 30ft	
STA TO RWY 16 MDA 800'		CIRCLING*	
	PALS AVBL	PALS OUT	MDA-VIS
A	RVR 1200m	VIS 2200m	860' - 2200m
B	VIS 1200m	VIS 2400m	860' - 2400m
C	VIS 1900m	VIS 3100m	1020' - 3100m
D	VIS 3000m	VIS 4200m	1040' - 4200m

\*Circling to West side RWY only.

**SANDY EAST ARRIVAL**

From over EBISU, proceed via IKE R-073 to 27DME (DGC R-345), then turn left to intercept and proceed via DGC R-337 to SANDY via LAGER.

Cross IKE R-073/27DME (DGC R-345) at or above 5,000FT, cross LAGER at or above 3,000FT, cross SANDY at or above 2,000FT.

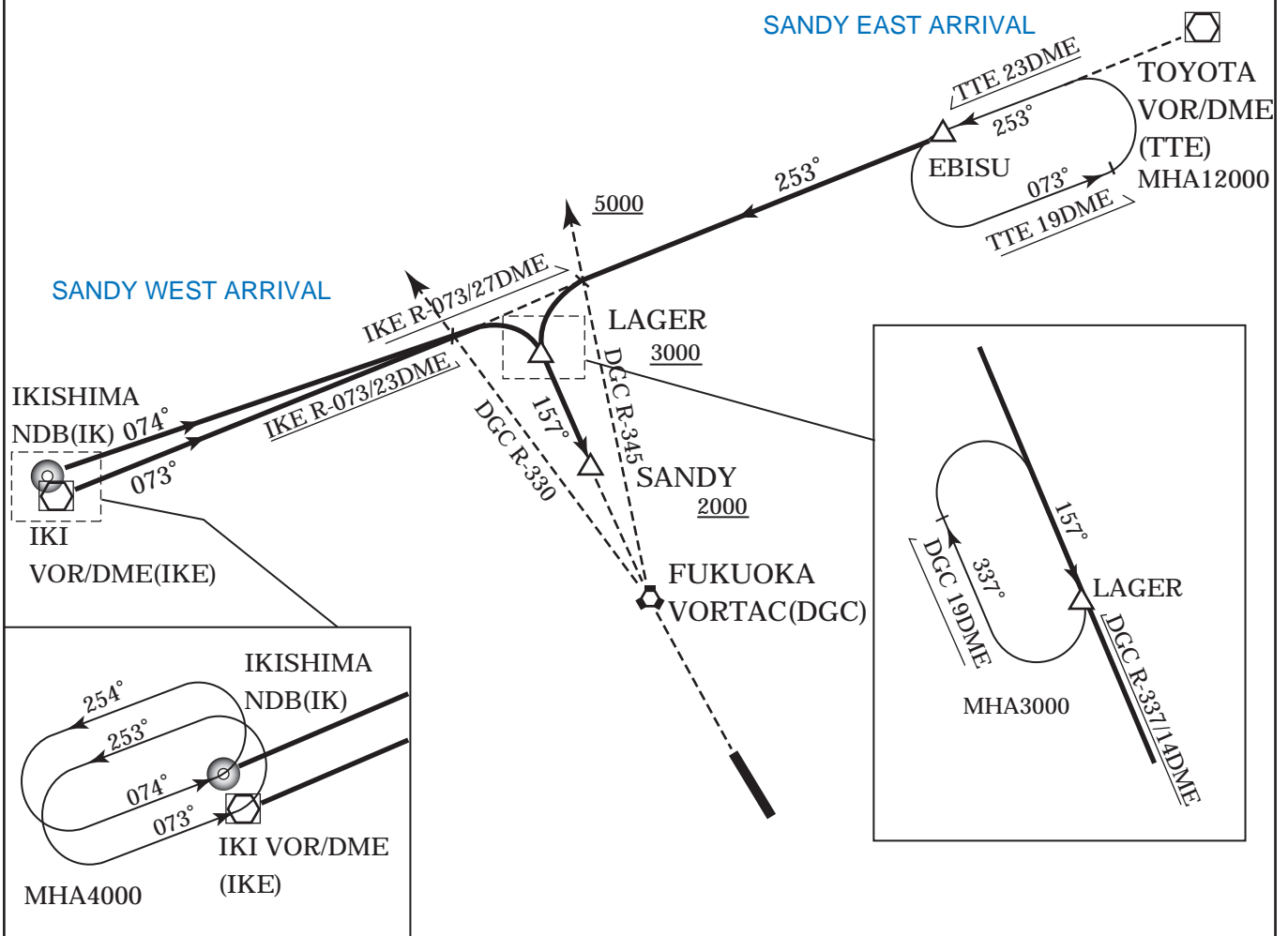
**SANDY WEST ARRIVAL**

From over IKE VOR/DME (IK NDB), proceed via IKE R-073 (074DEG from IK NDB) to IKE R-073/23DME (DGC R-330), then turn right to intercept and...

From over LAGER...

...proceed via DGC R-337 to SANDY.

Cross LAGER at or above 3,000FT, cross SANDY at or above 2,000FT.



**HARRY EAST ARRIVAL**

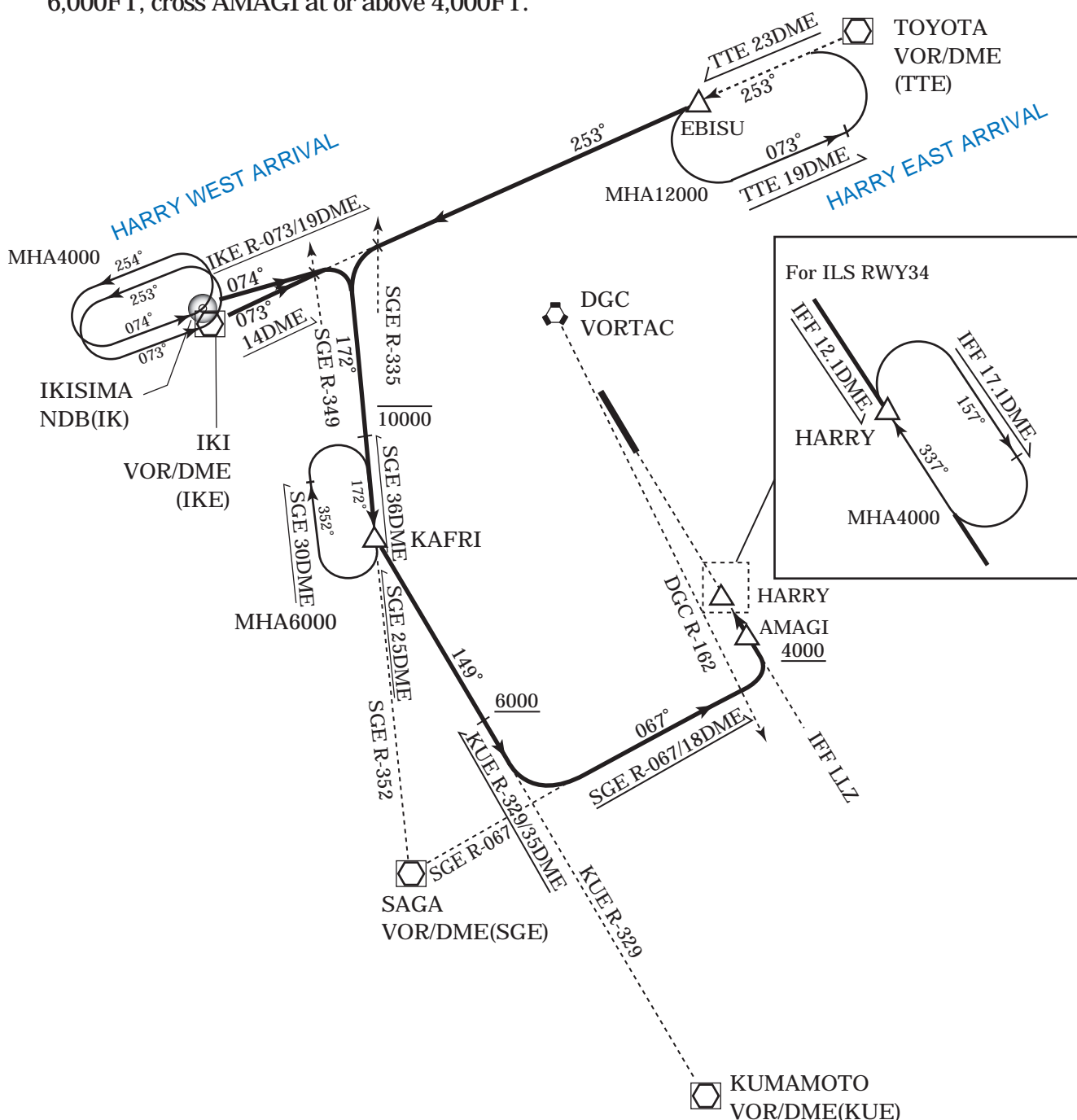
From over EBISU, proceed via IKE R-073 to 19DME (SGE R-355), turn left to intercept and proceed via SGE R-352 to KAFRI, then proceed via KUE R-329, turn left and proceed via SGE R-067 to 18DME (DGC R-162), turn left to intercept and proceed via IFF-LLZ to HARRY via AMAGI.

Cross SGE R-352/36DME at or below 10,000FT, cross KUE R-329/35DME at or above 6,000FT, cross AMAGI at or above 4,000FT.

**HARRY WEST ARRIVAL**

From over IKE VOR/DME (IK NDB), proceed via IKE R-073 (074DEG from IK NDB) to IKE R-073/14DME (SGE R-349), turn right to intercept and proceed via SGE R-352 to KAFRI, then proceed via KUE R-329, turn left and proceed via SGE R-067 to 18DME (DGC R-162), turn left to intercept and proceed via IFF-LLZ to HARRY via AMAGI.

Cross SGE R-352/36DME at or below 10,000FT, cross KUE R-329/35DME at or above 6,000FT, cross AMAGI at or above 4,000FT.



OGUNI THREE DEPARTURE

RWY 16: Climb RWY HDG until 1NM from RWY end/DGC 8DME, turn right within DGC 10DME/3NM from RWY end to intercept and proceed via DGC R-159 to MIKNI, then turn left and proceed via TAE R-272 to OGUNI.

Cross MIKNI at or above 10,000FT.

RWY 34: Climb direct to DGC VORTAC until passing 3,000FT or crossing DGC VORTAC whichever sooner, then turn right to intercept and proceed via DGC R-146 to OGUNI via SAKKY.

Maintain at or below 10,000FT within DGC 9DME.

Cross DGC R-146/28DME at or below FL200, cross SAKKY at or above 10,000FT.

NOTE 1: When take off RWY16, following climb gradient should be maintained until 1,400FT.

NOTE 2: When take off RWY34, following climb gradient should be maintained until 3,200FT.

Speed (Knots)	60	90	120	150	180	210
Rate (Feet/Min)	300	450	600	750	900	1050

SAKKY THREE DEPARTURE

RWY 16: Climb RWY HDG until 1NM from RWY end/DGC 8DME, turn right within DGC 10DME/3NM from RWY end to intercept and proceed via DGC R-159 to MIKNI, then turn left and proceed via IWC R-239 to SAKKY.

Cross SAKKY at or above 10,000FT.

RWY 34: Climb direct to DGC VORTAC until passing 3,000FT or crossing DGC VORTAC whichever sooner, then turn right to intercept and proceed via DGC R-146 to SAKKY.

Maintain at or below 10,000FT within DGC 9DME.

Cross DGC R-146/28DME at or below FL200, cross SAKKY at or above 10,000FT.

NOTE 1: When take off RWY16, following climb gradient should be maintained until 1,400FT.

NOTE 2: When take off RWY34, following climb gradient should be maintained until 3,200FT.

Speed (Knots)	60	90	120	150	180	210
Rate (Feet/Min)	300	450	600	750	900	1050

YAMGA THREE DEPARTURE

RWY 16: Climb RWY HDG until 1NM from RWY end/DGC 8DME, turn right within DGC 10DME/3NM from RWY end to intercept and proceed via DGC R-159 to YAMGA.

Cross YAMGA at or above 10,000FT.

RWY 34: Climb direct to DGC VORTAC until passing 3,000FT or crossing DGC VORTAC whichever sooner, then turn right to intercept and proceed via DGC R-146 to YURRY, then turn right and proceed via KUE R-351 to YAMGA.

Maintain at or below 10,000FT within DGC 9DME.

Cross KUE R-351/28DME at or below FL200, cross YAMAGA at or above 10,000FT.

NOTE 1: When take off RWY16, following climb gradient should be maintained until 1,400FT.

NOTE 2: When take off RWY34, following climb gradient should be maintained until 3,200FT.

Speed (Knots)	60	90	120	150	180	210
Rate (Feet/Min)	300	450	600	750	900	1050

YAMEK FIVE DEPARTURE

RWY 16: Climb RWY HDG until 1NM from RWY end/DGC 8DME, turn right within DGC 10DME/3NM from RWY end to intercept and proceed via DGC R-159 to YAMEK.

RWY 34: Climb direct to DGC VORTAC until passing 3,000FT or crossing DGC VORTAC whichever sooner, then turn right to intercept and proceed via DGC R-146 to YURRY, then turn right to intercept and proceed via TTE R-209 to YAMEK.

Maintain at or below 10,000FT within DGC 9DME,...

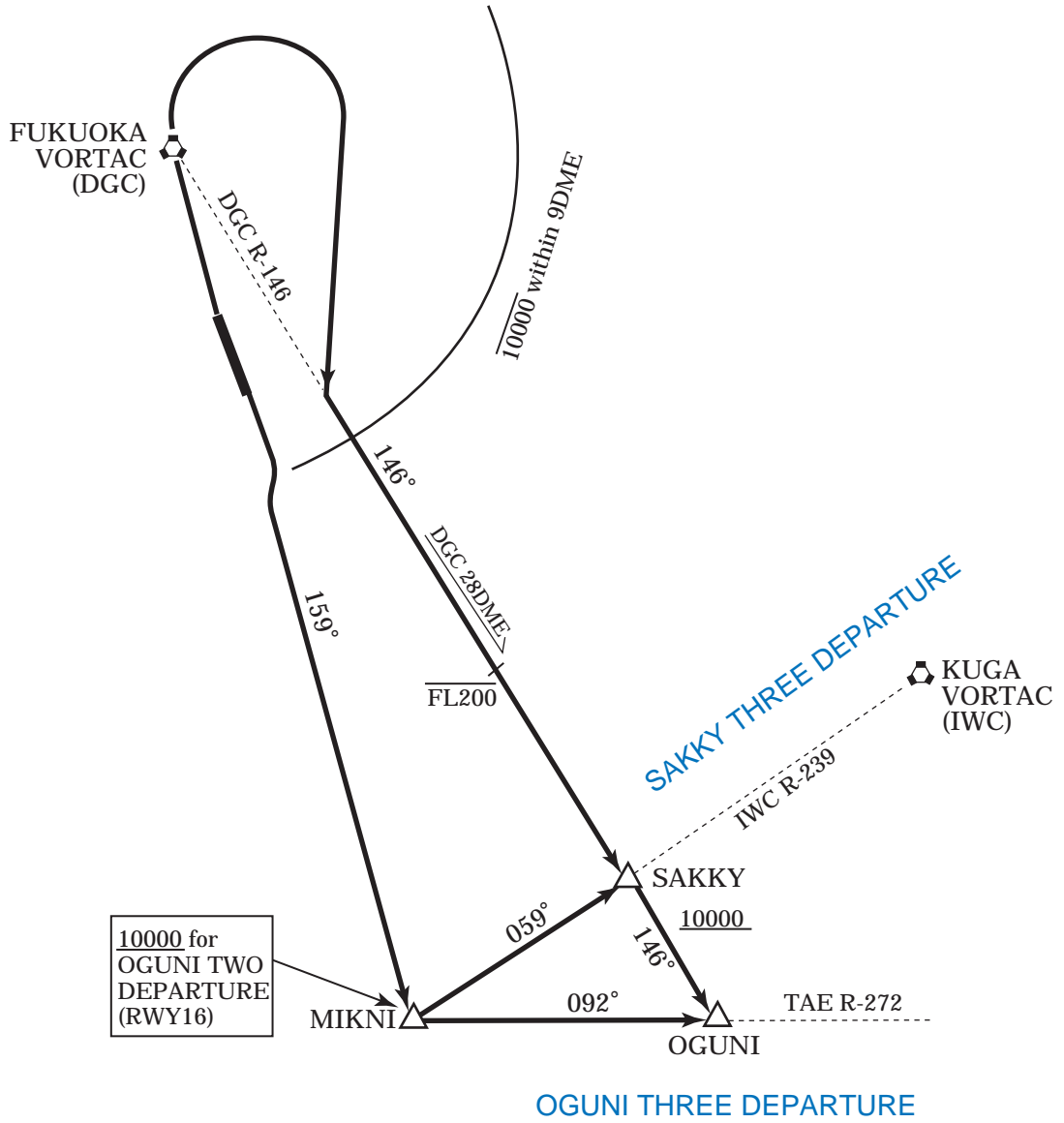
..Cross YAMEK at or above 5,000FT.

NOTE 1: When take off RWY16, following climb gradient should be maintained until 1,400FT.

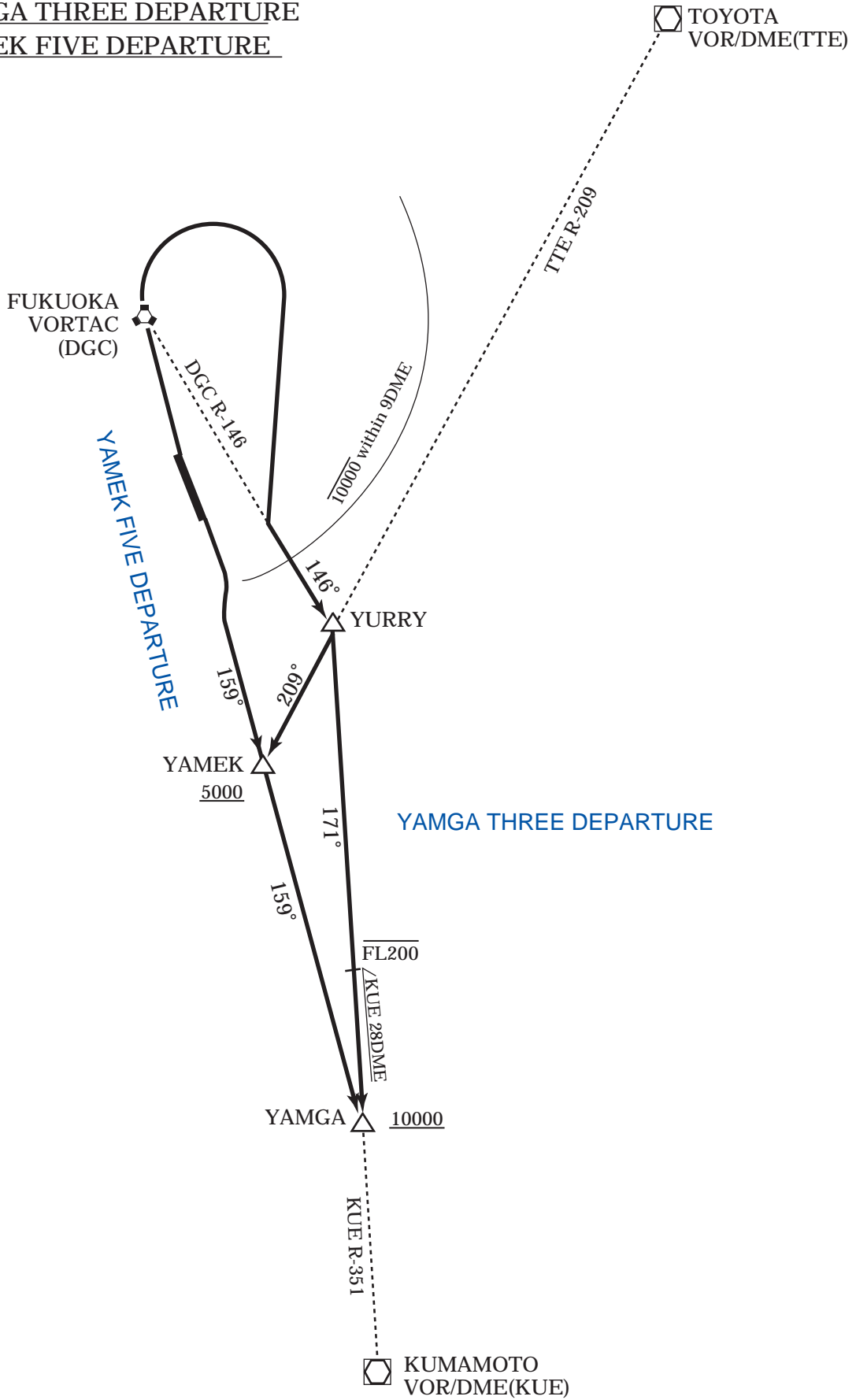
NOTE 2: When take off RWY34, following climb gradient should be maintained until 3,200FT.

Speed (Knots)	60	90	120	150	180	210
Rate (Feet/Min)	300	450	600	750	900	1050

OGUNI THREE DEPARTURE  
SAKKY THREE DEPARTURE



YAMGA THREE DEPARTURE  
YAMEK FIVE DEPARTURE



**FUKUOKA NINE DEPARTURE**

RWY 16: Climb RWY HDG until 1NM from RWY end/DGC 8DME, turn right within DGC 10DME/3NM from RWY end to intercept and proceed via DGC R-159 to YAMEK, then turn right to intercept and proceed via DGC R-182 to DGC VORTAC.

Cross YAMEK at or above 5,000FT.

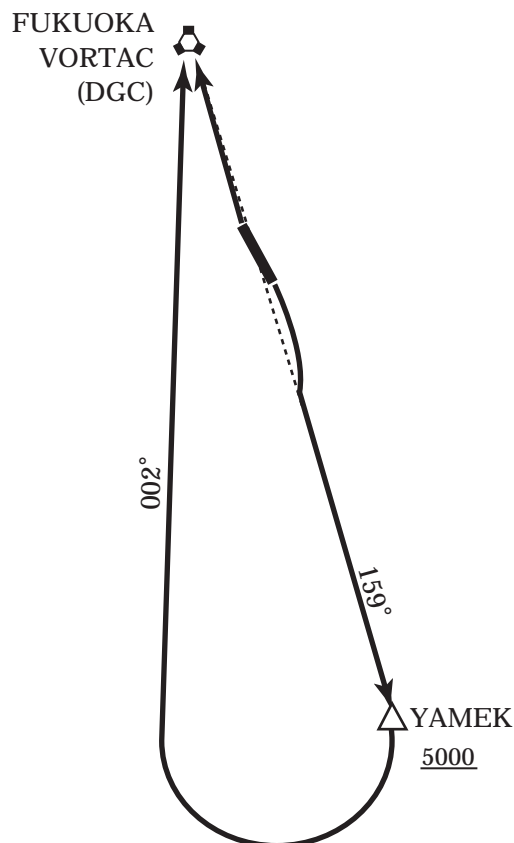
RWY 34: Climb direct to DGC VORTAC.

NOTE 1: When take off RWY16, following climb gradient should be maintained until 1,400FT.

NOTE 2: When take off RWY34, following climb gradient should be maintained until 1,000FT.

Speed (Knots)	60	90	120	150	180	210
Rate (Feet/Min)	300	450	600	750	900	1050

**FUKUOKA NINE DEPARTURE**



RJFF

FUKUOKA TRANSITION

OITA TRANSITION

After OGUNI, proceed via TAE R-272 to TAE VOR/DME.  
Cross TAE R-272/32DME at or above FL170.

KUGA TRANSITION

After SAKKY, proceed via IWC R-239 to IWC VORTAC.  
Cross IWC R-239/73DME (DGC R-133) at or above FL170.

KAGOSHIMA TRANSITION

After YAMGA, proceed via HKC R-012 to HKC VORTAC.

KUMAMOTO TRANSITION

After YAMGA, proceed via KUE R-351 to KUE VOR/DME.

TAGAWA TRANSITION (for RWY16 only)

After YAMEK, turn left and proceed via TTE R-209 to intercept and proceed via  
DGC R-081 to IWC VORTAC.

Cross TTE R-209/47DME (DGC R-140) at or above 6,000FT, cross TTE  
R-209/38DME (DGC R-110) at assigned altitude.

SAGA TRANSITION

After YAMEK, proceed via SGE R-058 to SGE VOR/DME.

TAIME TRANSITION

After YAMEK, proceed via TTE R-209 to join G339.

IKI TRANSITION

After YAMEK, turn right, proceed via IKE R-127 to KAFRI or IKE VOR/DME  
(307DEG to IK NDB).

Cross IKE R-127/37DME at or above 6,000FT.

RJFF

FUKUOKA TRASITION

