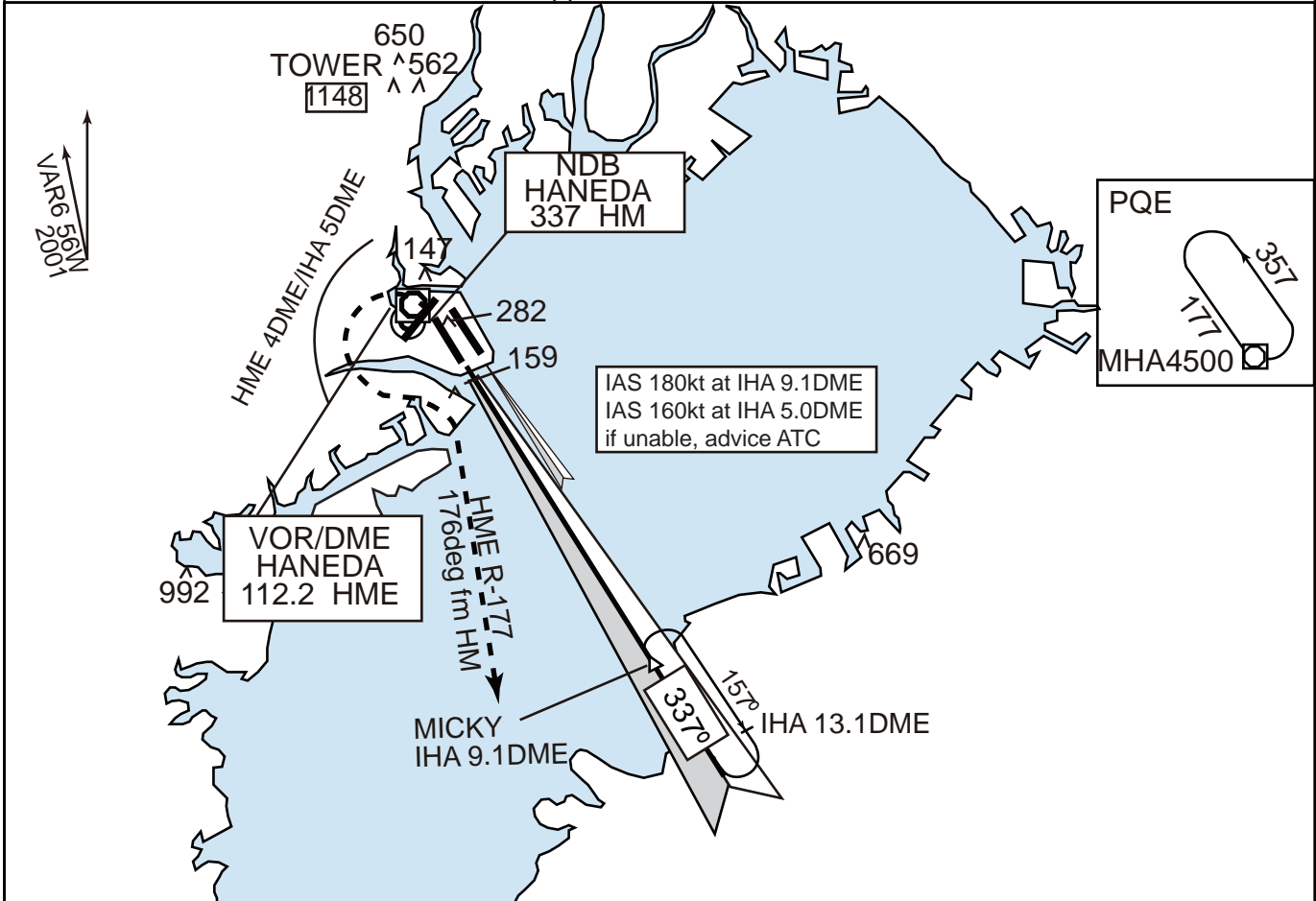


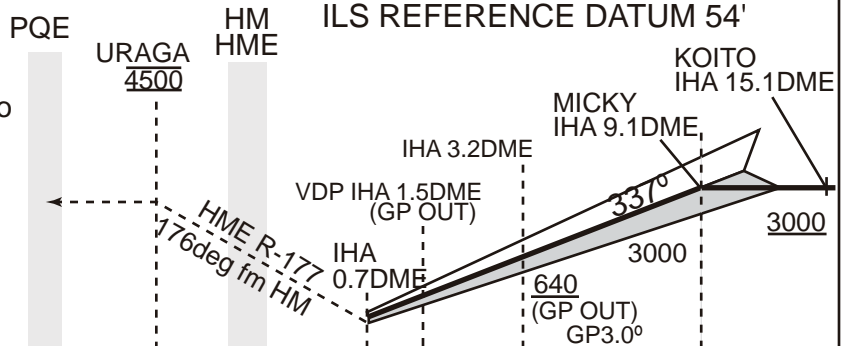
TOKYO APP 119.1-119.4-119.7 126.5-236.8-261.2	ILS-LLZ 111.7 IHA ILS-GP 333.5 ILS-DME CH-54x	TOKYO TOWER 118.1-124.35-118.8 126.2-236.8	RADAR AVAILABLE ATIS 128.8
---	--	--	-------------------------------

Simultaneous approach authorized with RWY34R



MISSED APPROACH

At DA, climb to 500' on 337°, turn left within HME 4DME/IHA 5DME climb to 4500' via HME R-177 (176° from HM NDB) to URAGA then via PQE R-357 to PQE VOR/DME and hold. Cross URAGA at 4500'. Contact TOKYO APP.



MINIMA

FIELD ELEV 21FT
TDZ ELEV 18FT

	STA TO RWY 34L					*CIRCLING MDA-VIS
	ILS			(GP OUT)		
	RTZL & RCLL AVBL	RTZL &/or RCLL OUT	PALS OUT	PALS AVBL	PALS OUT	
A					RVR 1400m	600'-1600m
B	RVR 550m	RVR 800m	RVR 1200m	RVR 1200m	VIS 1400m	
C	VIS 800m	VIS 800m	VIS 1200m	VIS 1200m	VIS 1700m	
D					VIS 2300m	

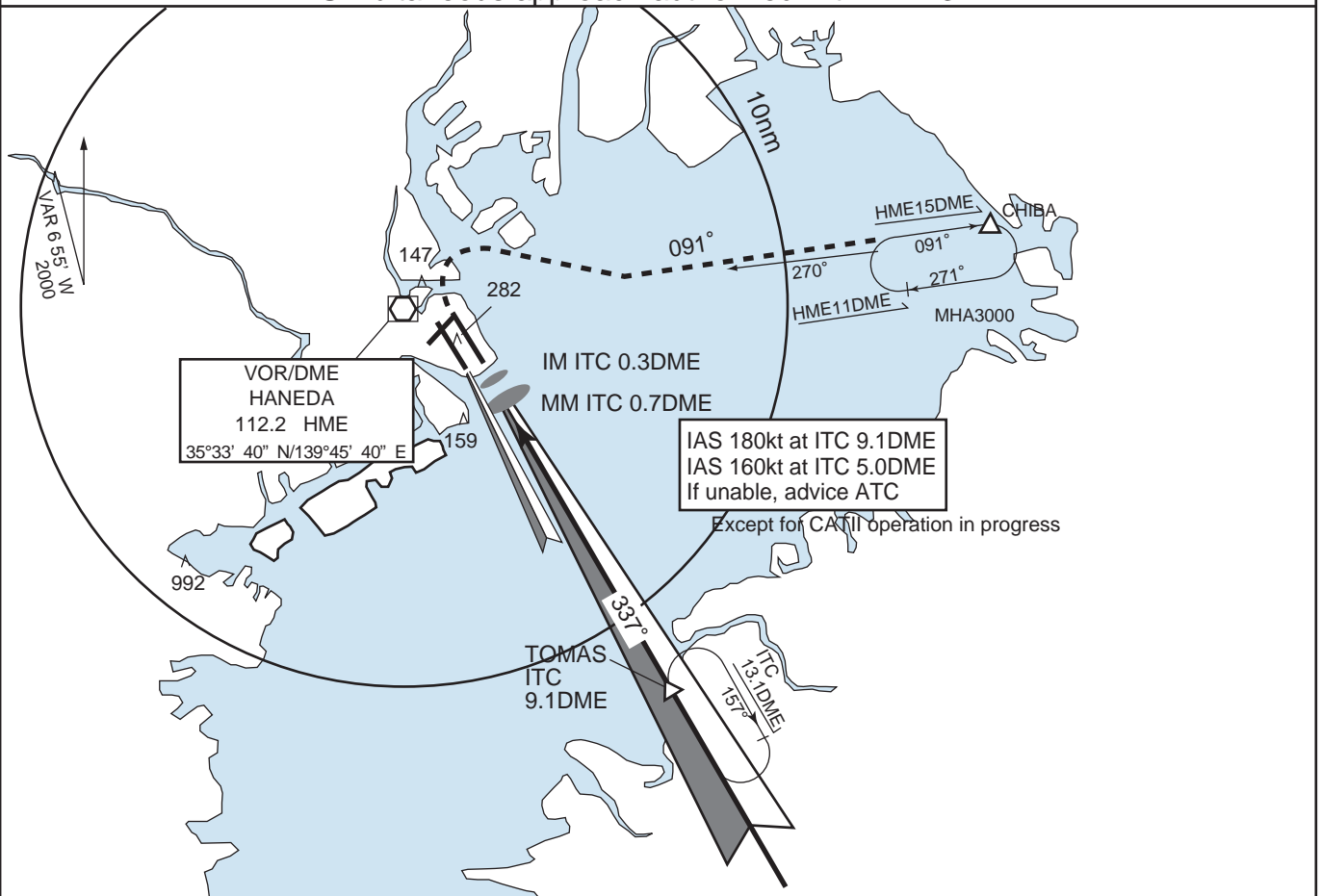
*Circling not authorized during the nighttime except counterclockwise circling to RWY 16R/16L/34R

RJTT

TOKYO ILS NR.2 RWY 34R

TOKYO APP 119.1 - 119.4 - 119.7 126.5 - 236.8 - 261.2	ILS-LLZ 108.9 ITC ILS-GP 329.3 ILS-DME CH-26	TOKYO TOWER 118.1 - 124.35 - 118.8 126.2 - 236.8	RADAR AVAILABLE ATIS 128.8
---	---	--	-------------------------------

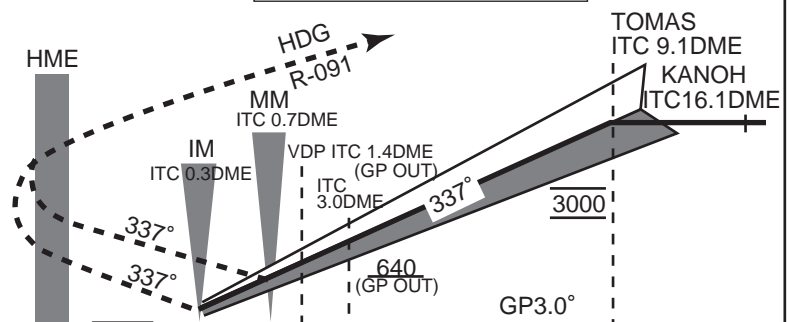
Simultaneous approach authorized with RWY34L



MISSED APPROACH

At DA, climb to 500' on 337°, turn right climb to 3000' via HME R-091 to CHIBA and hold.
Contact TOKYO APP.

ILS REFERENCE DATUM 54'



MINIMA

FIELD ELEV 21ft
TDZ ELEV 22ft

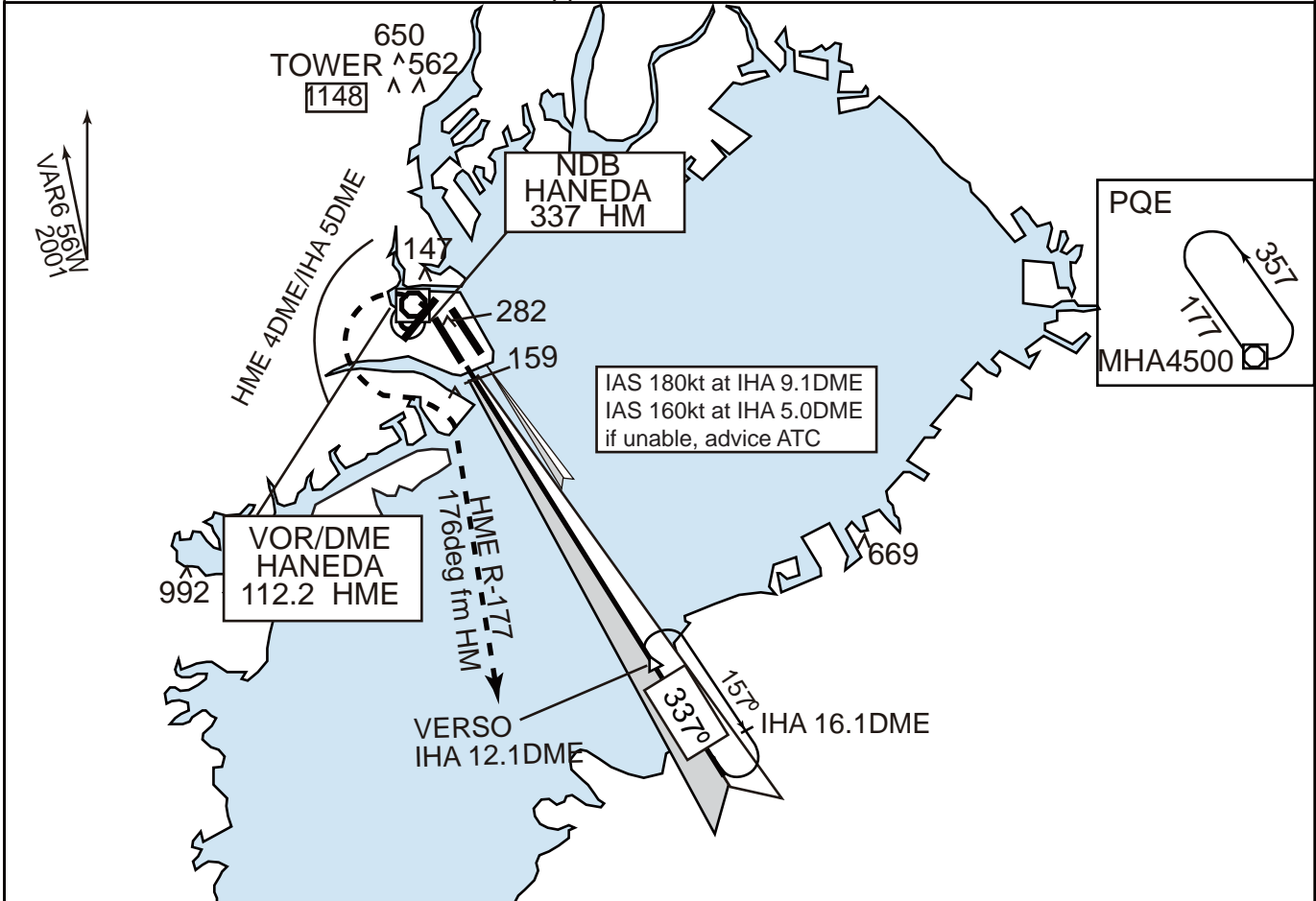
	CAT II RA 100' DA 122'	STA TO RWY 34R				(GP OUT)		*CIRCLING
		ILS			MDA 440'		MDA-VIS	
		RTZL & RCLL AVBL	RTZL and/or RCLL OUT	PALS OUT	PALS AVBL	PALS OUT		
A	RVR 350m	RVR 550m VIS 800m	RVR 800m VIS 800m	RVR 1200m VIS 1200m	RVR 1200m VIS 1200m	RVR 1400m VIS 1400m	600' -1600m	
B						RVR 1600m VIS 1600m		
C						VIS 2200m		620' -2400m
D								

*Circling not authorized during the nighttime, except counterclockwise circling to RWY 16R/16L and clockwise circling to RWY34L.

Remarks : RA150' -DA172' for the operators on operational evaluation phases prior to Category II operations

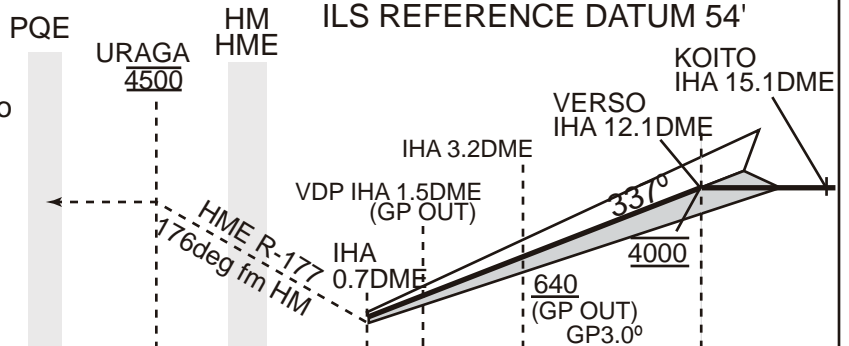
TOKYO APP 119.1-119.4-119.7 126.5-236.8-261.2	ILS-LLZ 111.7 IHA ILS-GP 333.5 ILS-DME CH-54x	TOKYO TOWER 118.1-124.35-118.8 126.2-236.8	RADAR AVAILABLE ATIS 128.8
---	--	--	-------------------------------

Simultaneous approach authorized with RWY34R



MISSED APPROACH

At DA, climb to 500' on 337°, turn left within HME 4DME/IHA 5DME climb to 4500' via HME R-177 (176° from HM NDB) to URAGA then via PQE R-357 to PQE VOR/DME and hold. Cross URAGA at 4500'. Contact TOKYO APP.



MINIMA

FIELD ELEV 21FT
TDZ ELEV 18FT

	STA TO RWY 34L					*CIRCLING MDA-VIS	
	ILS			(GP OUT)			
	DA 218'			MDA 460'			
RTZL & RCLL AVBL	RTZL &/or RCLL OUT	PALS OUT	PALS AVBL	PALS OUT			
A					RVR 1400m	600'-1600m	
B	RVR 550m	RVR 800m	RVR 1200m	RVR 1200m	VIS 1400m		
C	VIS 800m	VIS 800m	VIS 1200m	VIS 1200m	VIS 1700m		620'-2400m
D					VIS 2300m		620'-3200m

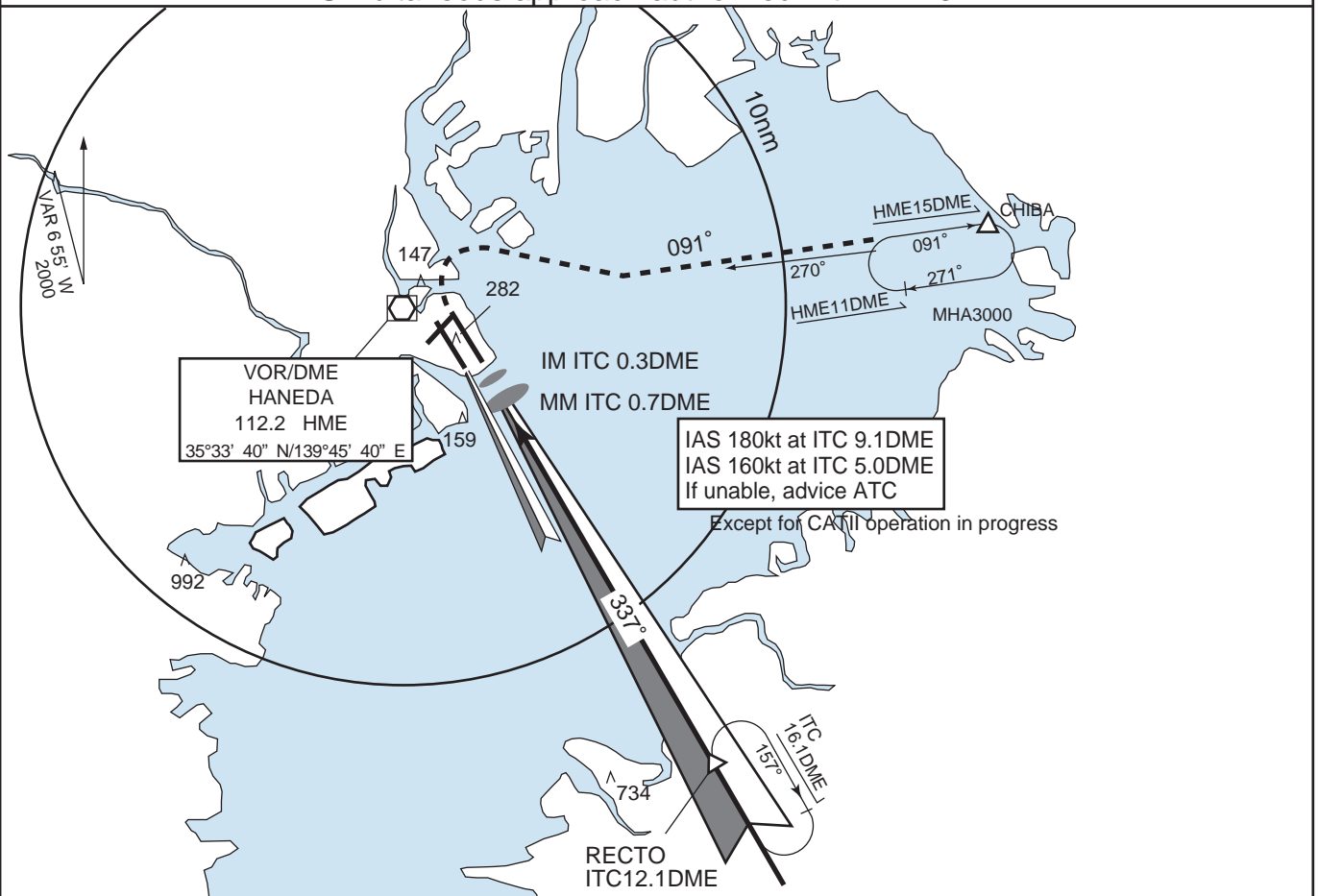
*Circling not authorized during the nighttime except counterclockwise circling to RWY 16R/16L/34R

RJTT

TOKYO ILS NR.4 RWY 34R

TOKYO APP 119.1 - 119.4 - 119.7 126.5 - 236.8 - 261.2	ILS-LLZ 108.9 ITC ILS-GP 329.3 ILS-DME CH-26	TOKYO TOWER 118.1 - 124.35 - 118.8 126.2 - 236.8	RADAR AVAILABLE ATIS 128.8
---	---	--	-------------------------------

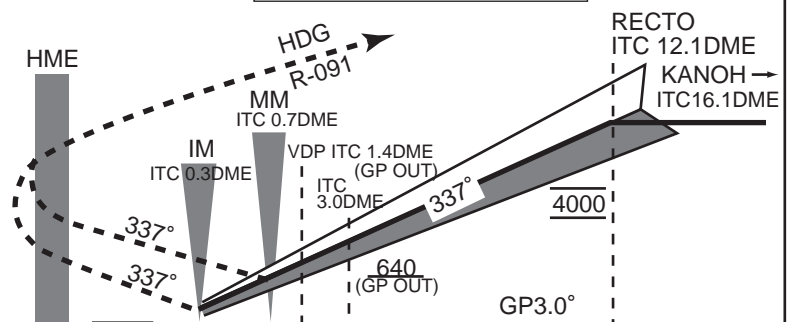
Simultaneous approach authorized with RWY34L



MISSED APPROACH

At DA, climb to 500' on 337°, turn right climb to 3000' via HME R-091 to CHIBA and hold. Contact TOKYO APP.

ILS REFERENCE DATUM 54'



MINIMA

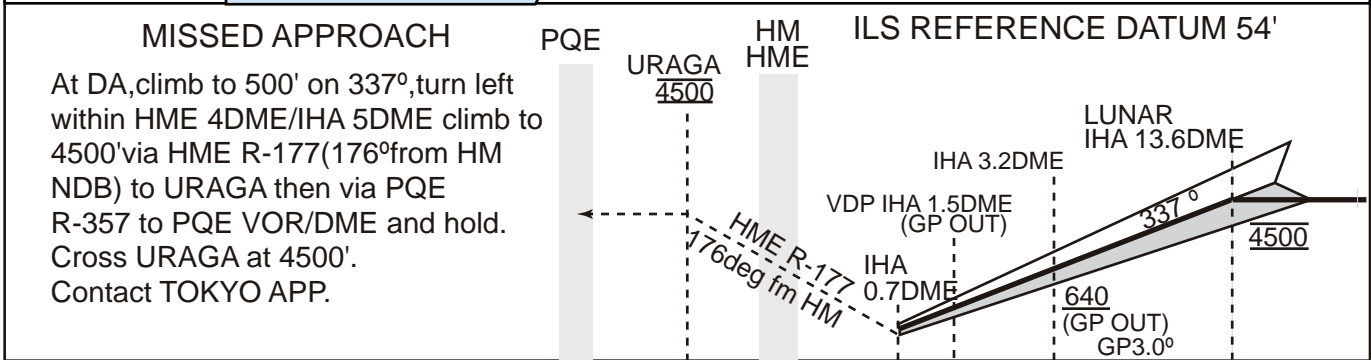
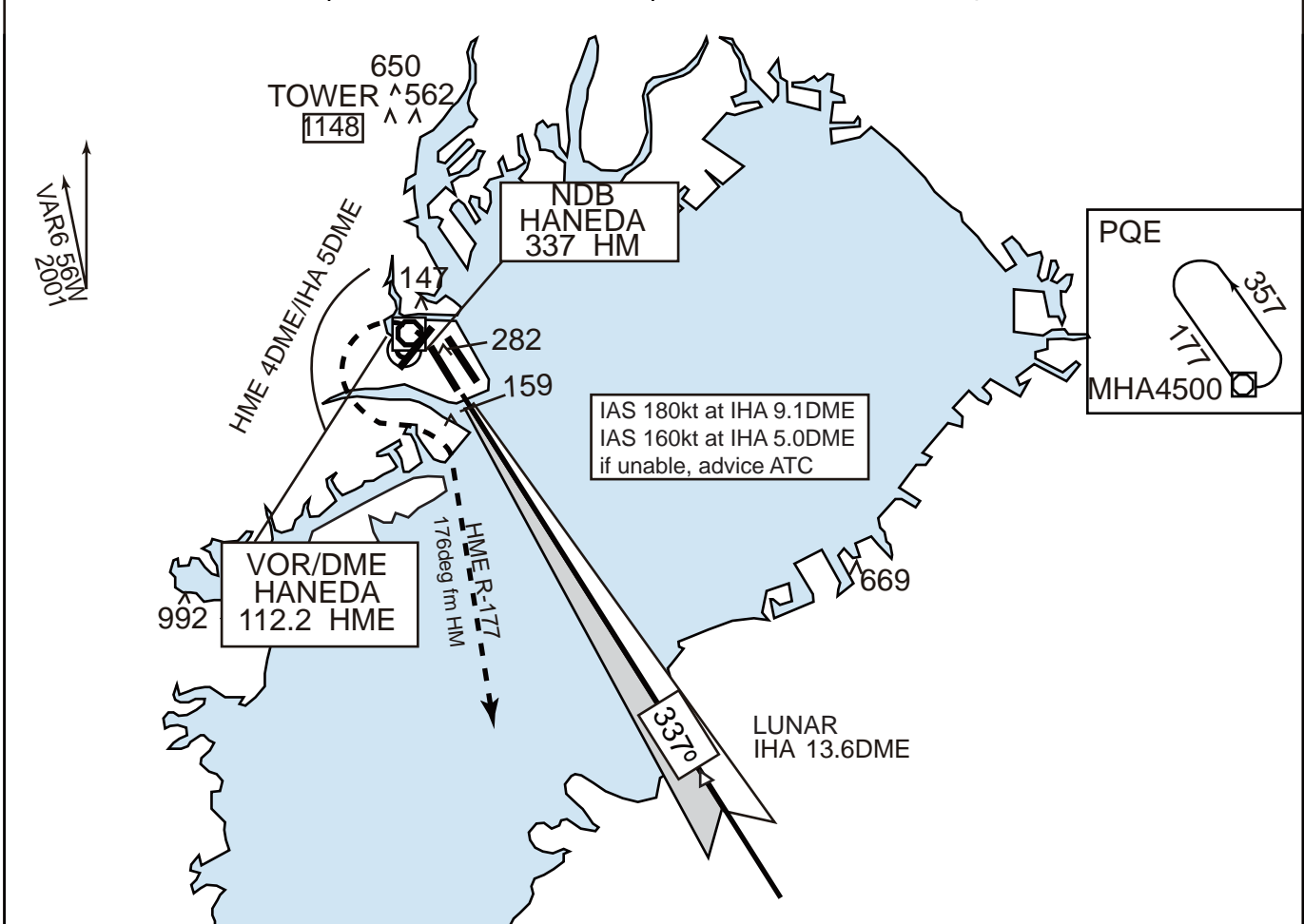
FIELD ELEV 21ft
TDZ ELEV 22ft

	CAT II RA 100' DA 122'	STA TO RWY 34R				(GP OUT)		*CIRCLING
		ILS				MDA 440'		MDA-VIS
		RTZL & RCLL AVBL	RTZL and/or RCLL OUT	PALS OUT	PALS AVBL	PALS OUT		
A	RVR 350m	RVR 550m VIS 800m	RVR 800m VIS 800m	RVR 1200m VIS 1200m	RVR 1200m VIS 1200m	RVR 1400m VIS 1400m	600' -1600m	
B						RVR 1600m VIS 1600m		
C						VIS 2200m		620' -2400m
D								

*Circling not authorized during the nighttime, except counterclockwise circling to RWY 16R/16L and clockwise circling to RWY34L.

Remarks : RA150' -DA172' for the operators on operational evaluation phases prior to Category II operations

TOKYO APP 119.1-119.4-119.7 126.5-236.8-261.2	ILS-LLZ 111.7 IHA ILS-GP 333.5 ILS-DME CH-54x	TOKYO TOWER 118.1-124.35-118.8 126.2-236.8	RADAR AVAILABLE ATIS 128.8
---	--	--	-------------------------------



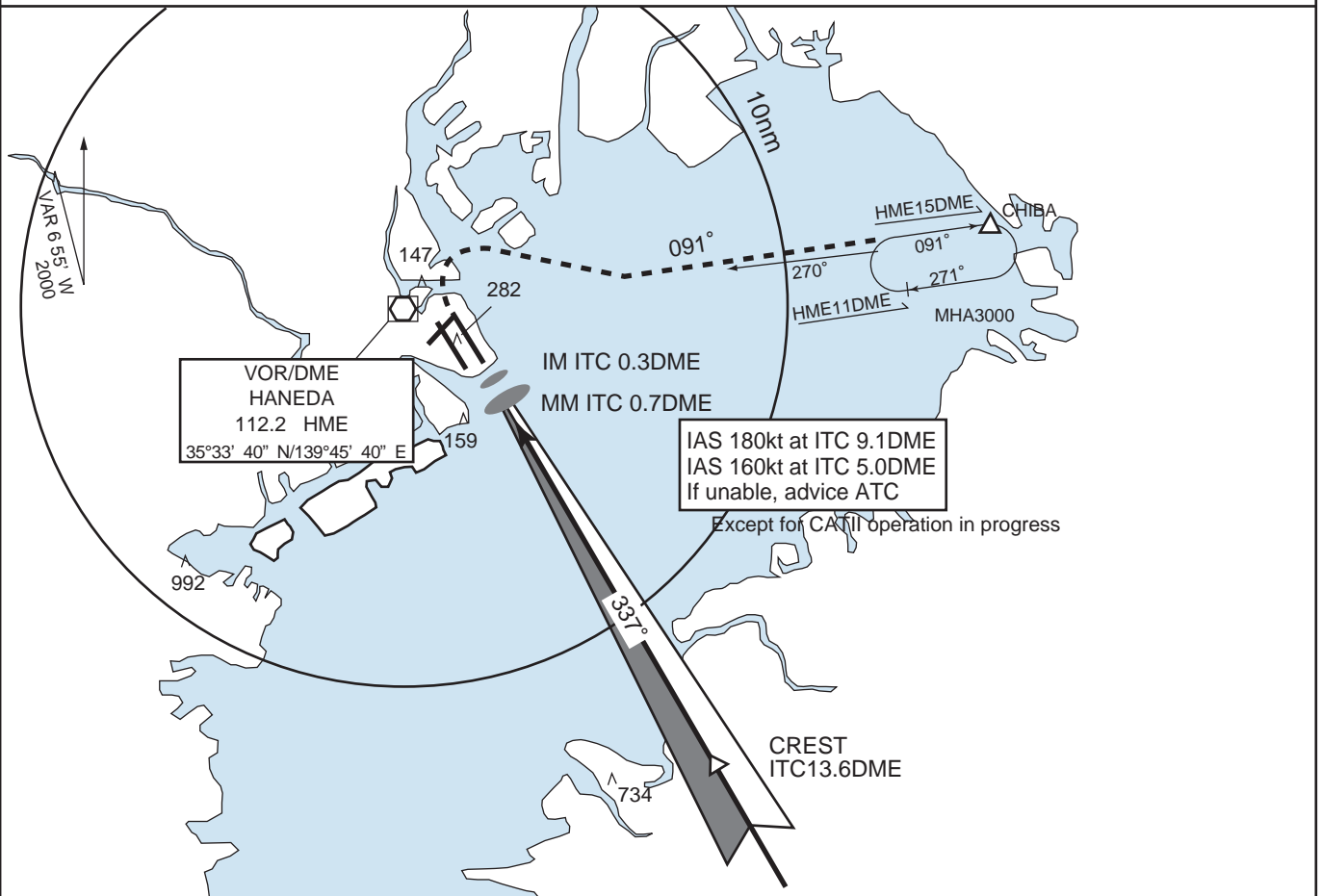
MINIMA			FIELD ELEV 21FT TDZ ELEV 18FT			
ILS STA TO RWY 34L				(GP OUT)		*CIRCLING
DA 218'			MDA 460'			
RTZL & RCLL AVBL	RTZL &/or RCLL OUT	PALS OUT	PALS AVBL	PALS OUT	MDA-VIS	
A				RVR 1400m	600'-1600m	
B	RVR 550m	RVR 800m	RVR 1200m	VIS 1400m		
C	VIS 800m	VIS 800m	VIS 1200m	VIS 1700m	620'-2400m	
D				VIS 2300m	620'-3200m	

*Circling not authorized during the nighttime except counterclockwise circling to RWY 16R/16L/34R

RJTT

TOKYO ILS NR.6 RWY 34R

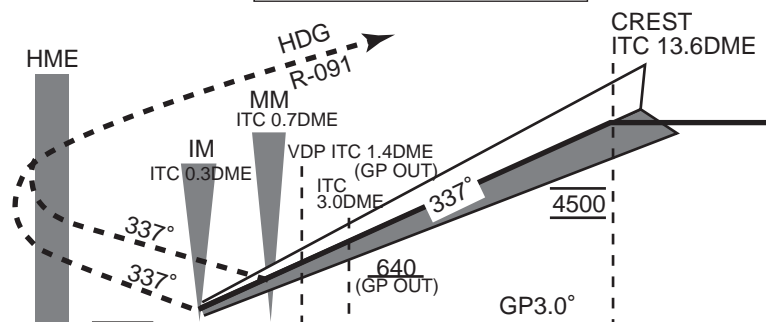
TOKYO APP 119.1 - 119.4 - 119.7 126.5 - 236.8 - 261.2	ILS-LLZ 108.9 ITC ILS-GP 329.3 ILS-DME CH-26	TOKYO TOWER 118.1 - 124.35 - 118.8 126.2 - 236.8	RADAR AVAILABLE ATIS 128.8
---	---	--	-------------------------------



MISSED APPROACH

At DA, climb to 500' on 337°, turn right climb to 3000' via HME R-091 to CHIBA and hold.
Contact TOKYO APP.

ILS REFERENCE DATUM 54'



MINIMA

FIELD ELEV 21ft
TDZ ELEV 22ft

	CAT II RA 100' DA 122'	STA TO RWY 34R				(GP OUT)		*CIRCLING
		ILS				MDA 440'		MDA-VIS
		RTZL & RCLL AVBL	RTZL and/or RCLL OUT	PALS OUT	PALS AVBL	PALS OUT		
A	RVR 350m	RVR 550m VIS 800m	RVR 800m VIS 800m	RVR 1200m VIS 1200m	RVR 1200m VIS 1200m	RVR 1400m VIS 1400m	600' -1600m	
B						RVR 1600m VIS 1600m		
C						RVR 1600m VIS 1600m		
D						VIS 2200m		

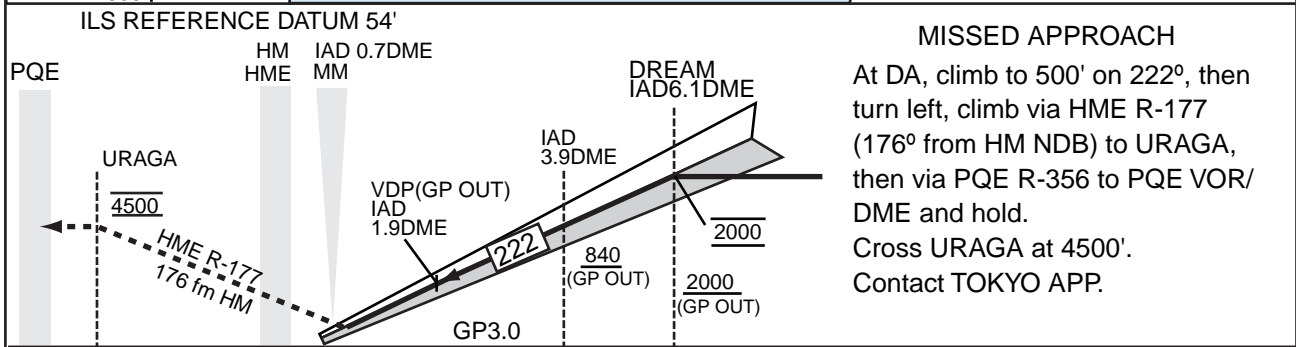
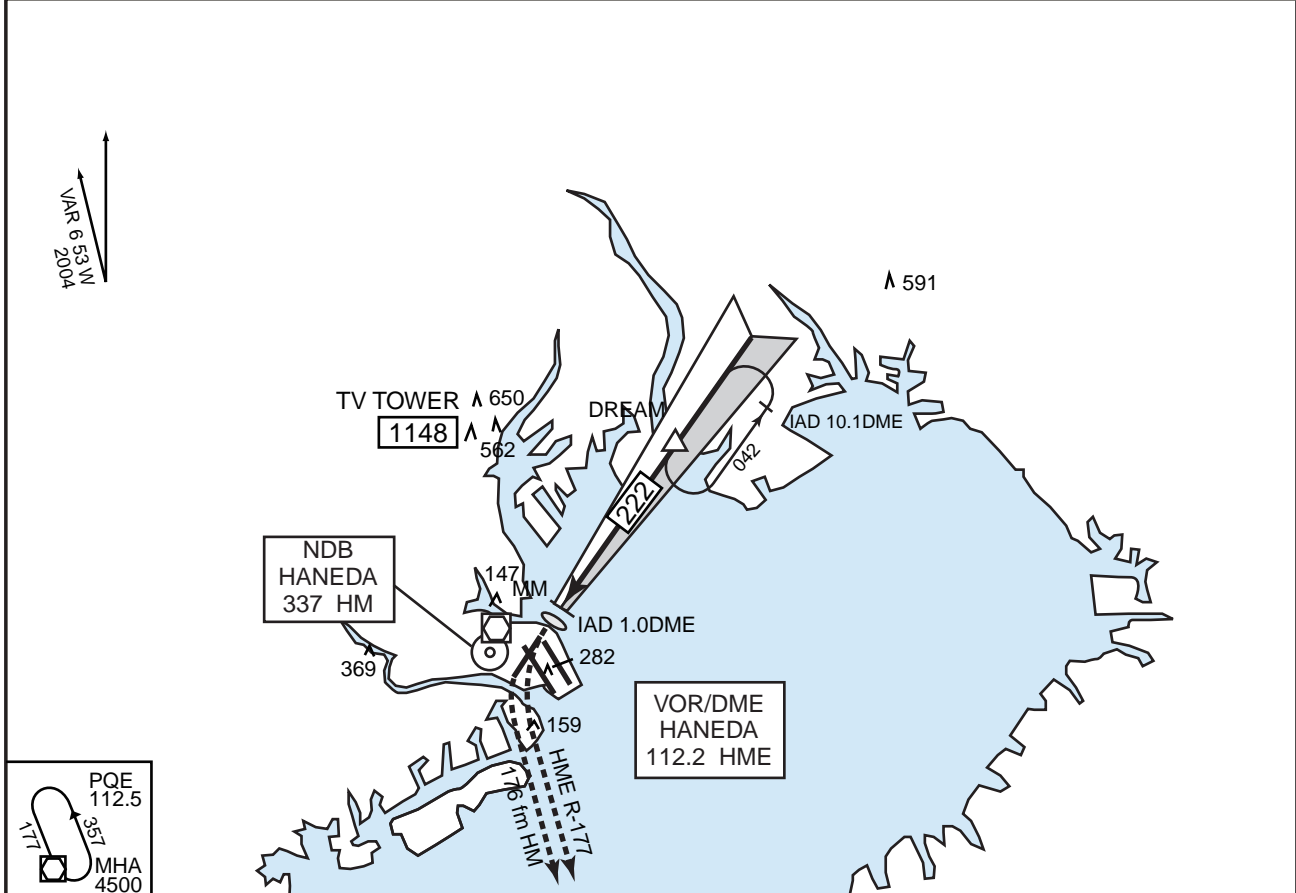
*Circling not authorized during the nighttime, except counterclockwise circling to RWY 16R/16L and clockwise circling to RWY34L.

Remarks : RA150' -DA172' for the operators on operational evaluation phases prior to Category II operations

RJTT

TOKYO ILS RWY 22

<p>TOKYO APP 119.1 - 119.4 - 119.7 126.5 - 236.8 - 261.2</p>	<p>ILS-LLZ 108.1 IAD ILS-GP 334.7 ILS-DME CH-18X</p>	<p>TOKYO TOWER 118.1 - 124.35 - 118.8 126.2 - 236.8</p>	<p>RADAR AVAILABLE ATIS 128.8</p>
--	--	---	---------------------------------------



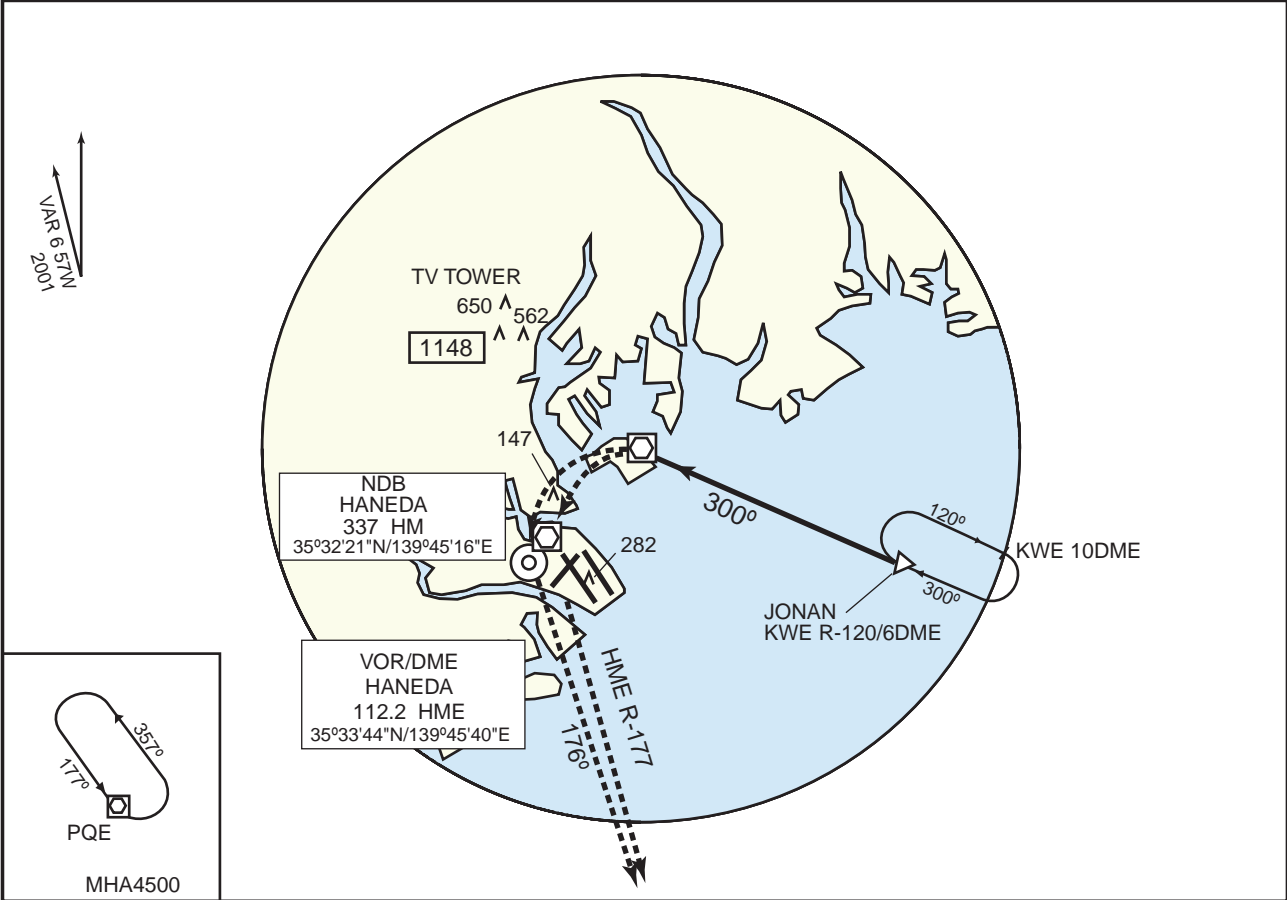
<p>MINIMA</p>	<p>FIELD ELEV 21ft TDZ ELEV 35ft</p>
---------------	--

	STA TO RWY 22				CIRCLING	
	ILS		(GP OUT)			
	DA 235'		MDA 600'			
	RTZL & RCLL AVBL	RTZL and/or RCLL OUT	PALS OUT	PALS AVBL	PALS OUT	MDA-VIS
A					RVR 1400m VIS 1400m	600' - 1600m
B	RVR 550m VIS 800m	RVR 800m VIS 800m	RVR 1200m VIS 1200m	RVR 1200m VIS 1200m	VIS 1800m	600' - 1800m
C					VIS 2300m	620' - 2400m
D				VIS 1800m	VIS 3100m	620' - 3200m

RJTT

TOKYO VOR/DME A (For RWY 16R)

<p>TOKYO APP 119.1 - 119.4 - 119.7 126.5 - 236.8 - 261.2</p>	<p>KOHTOH VOR/DME 115.0 KWE CH-97x 35°36'33"N/139°48'56"E</p>	<p>TOKYO TOWER 118.1 - 124.35 - 118.8 126.2 - 236.8</p>	<p>RADAR AVAILABLE ATIS 128.8</p>
--	---	---	---------------------------------------



MISSED APPROACH

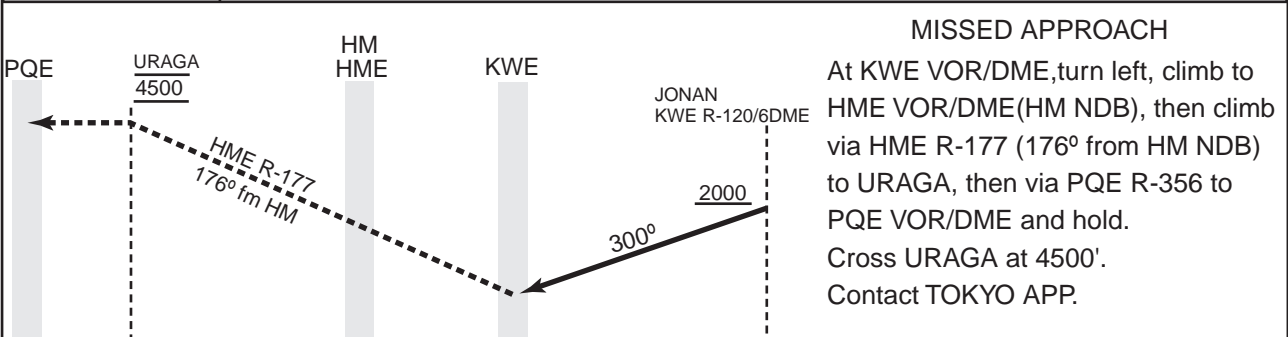
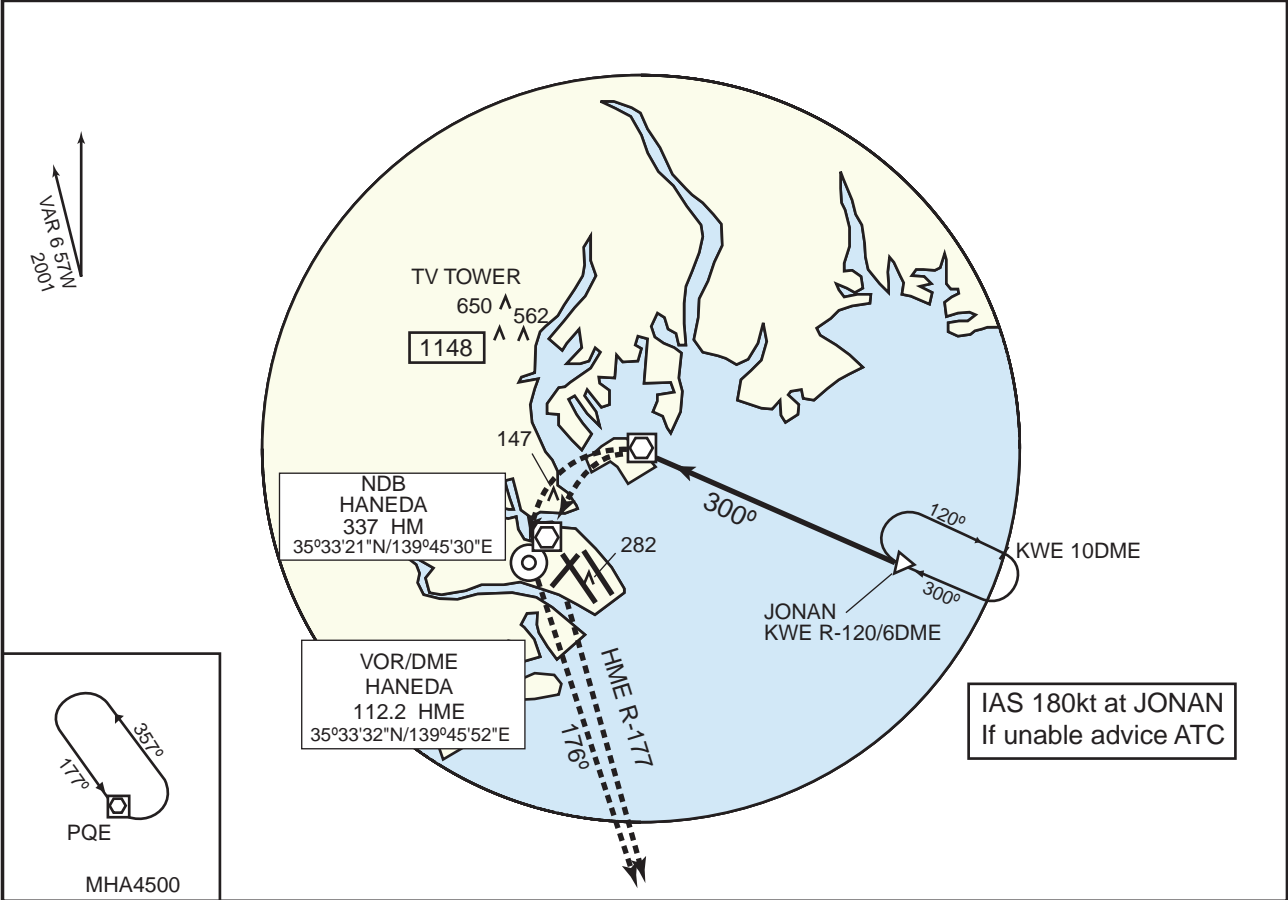
At KWE VOR/DME, turn left, climb to HME VOR/DME (HM NDB), then climb via HME R-177 (176° from HM NDB) to URAGA, then via PQE R-356 to PQE VOR/DME and hold. Cross URAGA at 4500'. Contact TOKYO APP.

MINIMA		FIELD ELEV 21ft
A	MDA-VIS 1000' - 6000m	
B		
C		
D		

RJTT

TOKYO VOR/DME C (For RWY 16L)

<p>TOKYO APP 119.1 - 119.4 - 119.7 126.5 - 236.8 - 261.2</p>	<p>KOHTOH VOR/DME 115.0 KWE CH-97x 35°36'20"N/139°49'07"E</p>	<p>TOKYO TOWER 118.1 - 124.35 - 118.8 126.2 - 236.8</p>	<p>RADAR AVAILABLE ATIS 128.8</p>
--	---	---	---------------------------------------

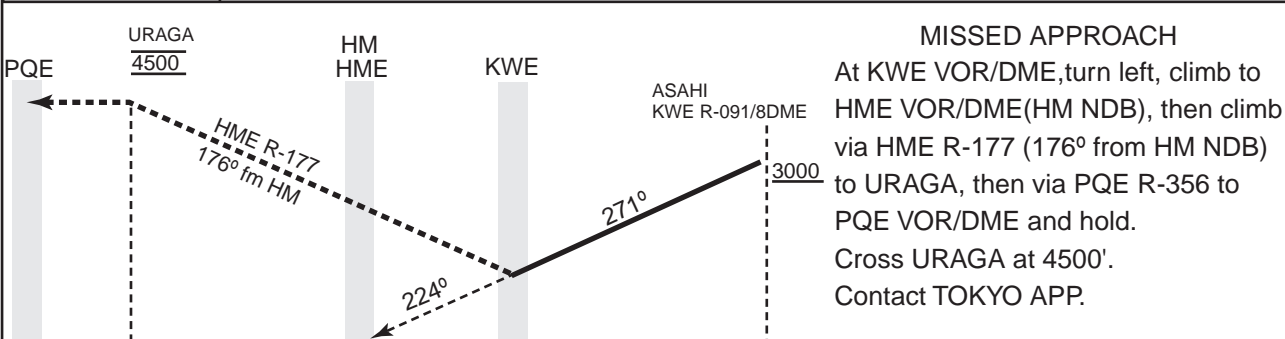
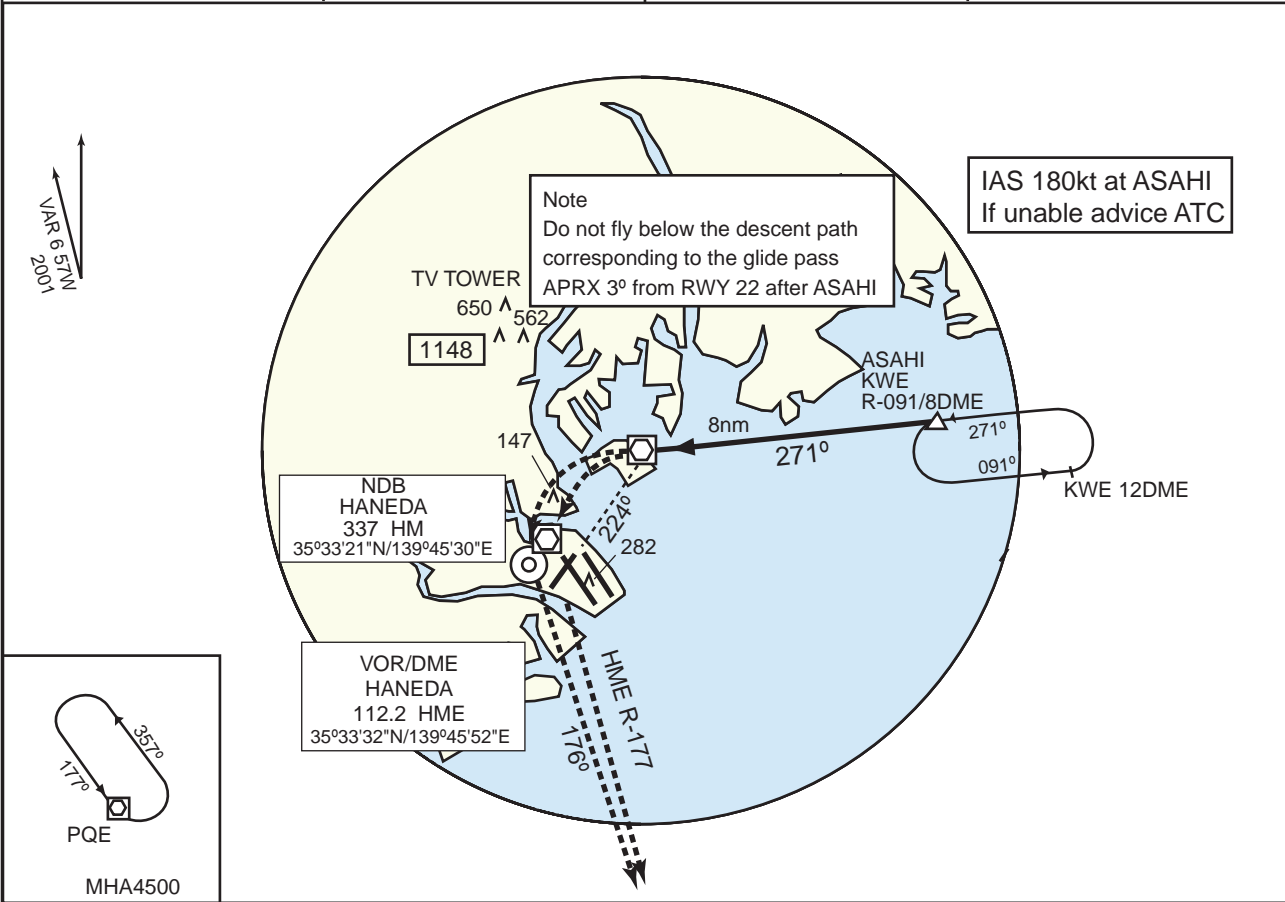


MINIMA		FIELD ELEV 21ft
A B C D	MDA-VIS 1000' - 6000m	

RJTT

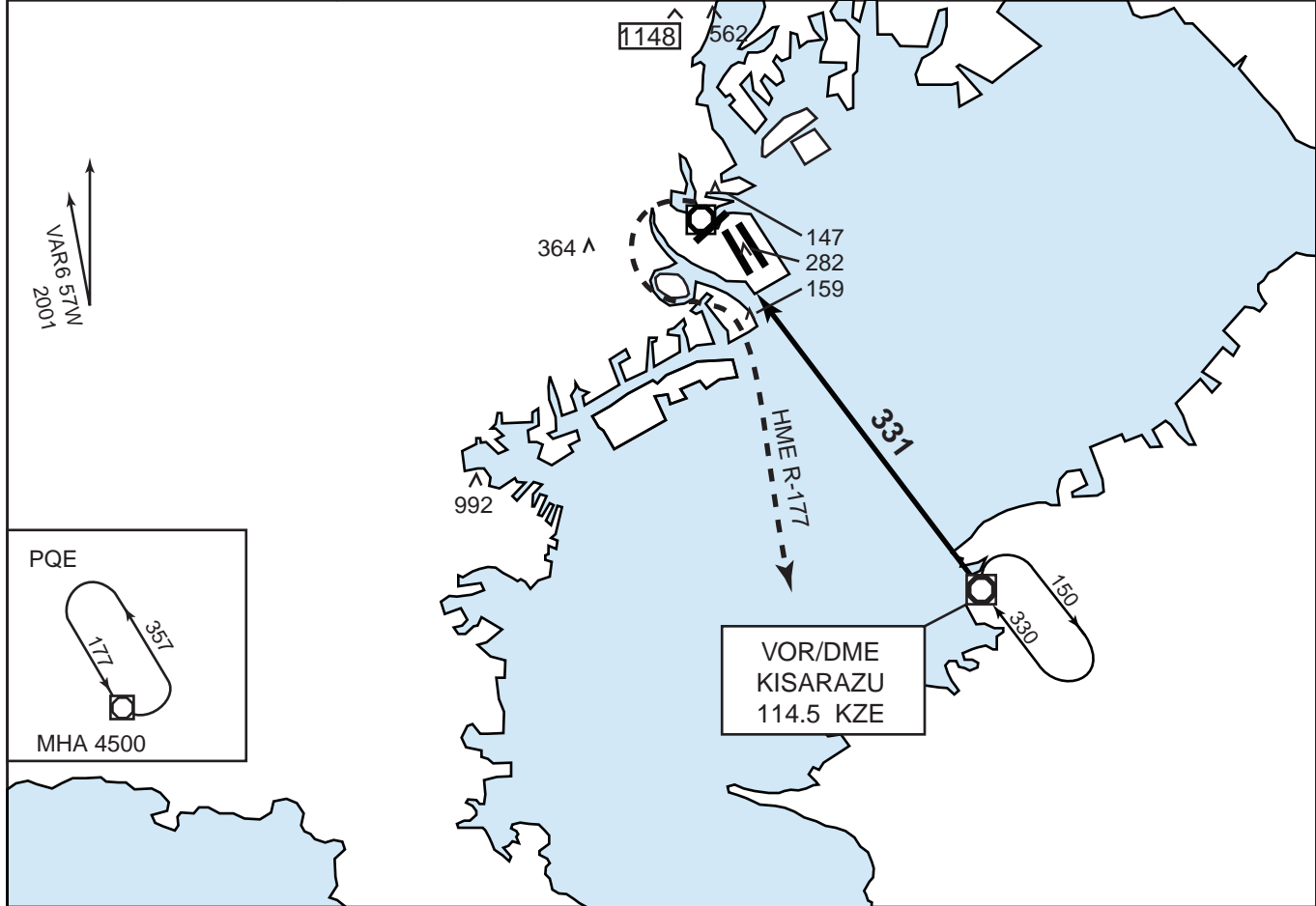
TOKYO VOR/DME B (For RWY 22)

TOKYO APP 119.1 - 119.4 - 119.7 126.5 - 236.8 - 261.2	KOHTOH VOR/DME 115.0 KWE CH-97x 35°36'20"N/139°49'07"E	TOKYO TOWER 118.1 - 124.35 - 118.8 126.2 - 236.8	RADAR AVAILABLE ATIS 128.8
---	---	--	-------------------------------



MINIMA		FIELD ELEV 21ft
MDA 1000'		
	PALS AVBL	PALS OUT
A	VIS 5000m	VIS 6000m
B		
C		
D		

<p>TOKYO APP 119.1-119.4-119.7 126.5-236.8-261.2</p>	<p>HANEDA VOR/DME 112.2 HME</p>	<p>TOKYO TOWER 118.1-124.35-118.8 126.2-236.8</p>	<p>RADAR AVAILABLE ATIS 128.8</p>
--	-------------------------------------	---	---------------------------------------



MISSED APPROACH

At HME VOR/DME, turn left climb to 4500' via HME R-177 to URAGA, then via PQE R-356 to PQE VOR/DME and hold.

Cross URAGA at 4500'.

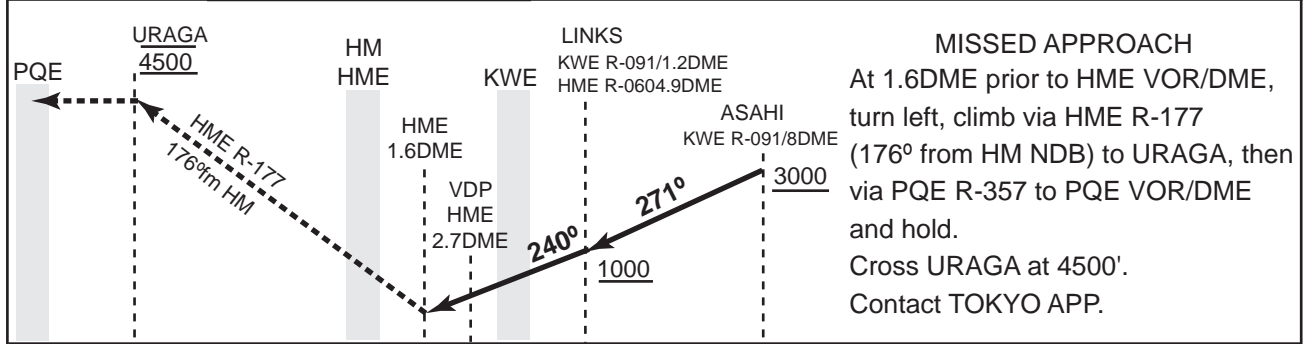
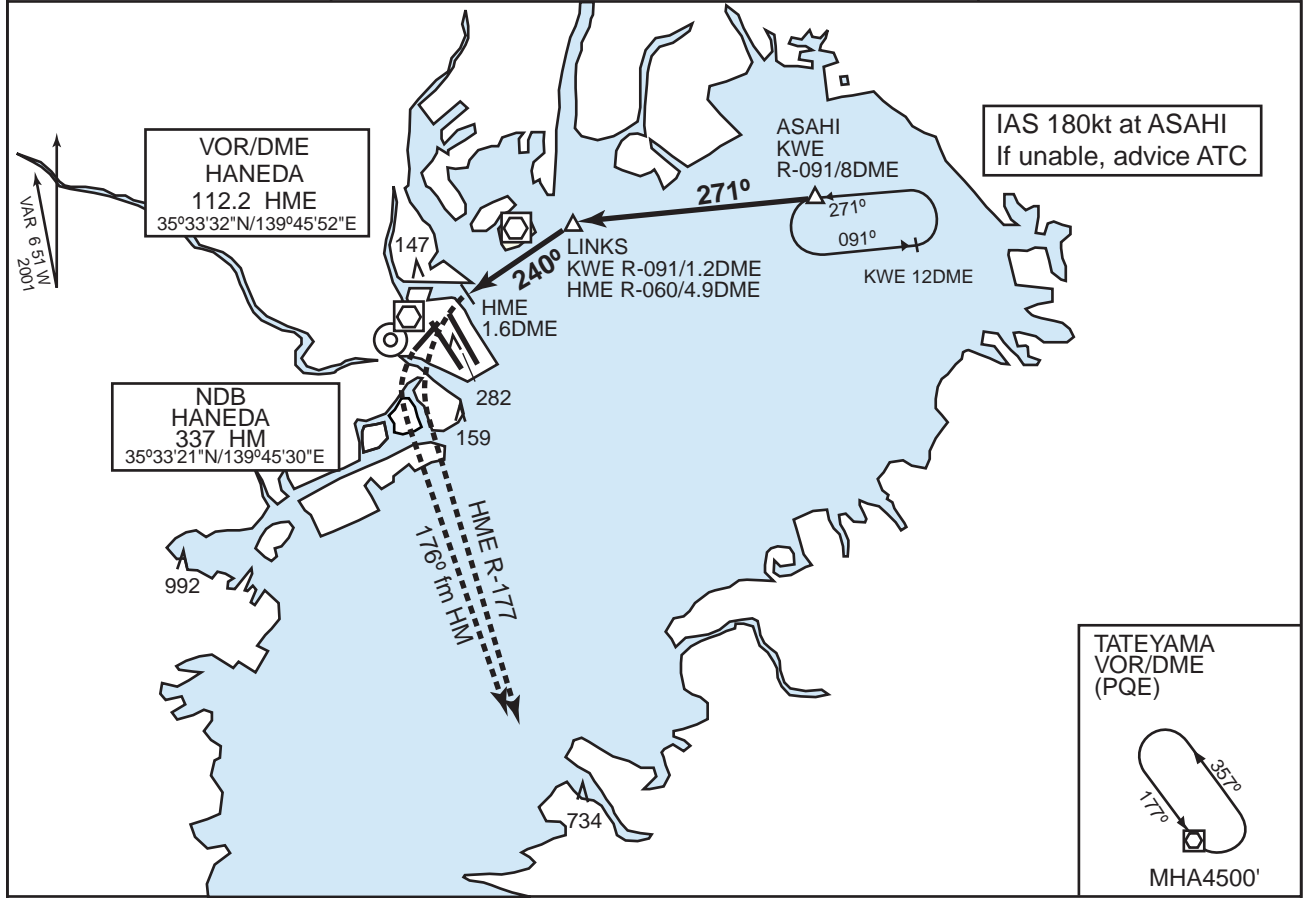
Contact TOKYO APP.

<p>MINIMA</p>	<p>FIELD ELEV 21FT</p>
---------------	------------------------

	STA TO RWY 34L MDA 640'		*CIRCLING MDA-VIS
	PALS AVBL	PALS OUT	
A	RVR 1200m VIS 1200m	RVR 1600m VIS 1600m	640'-1600m
B		VIS 1900m	640'-1900m
C		VIS 2500m	640'-2500m
D	VIS 2100m	VIS 3400m	640'-3400m

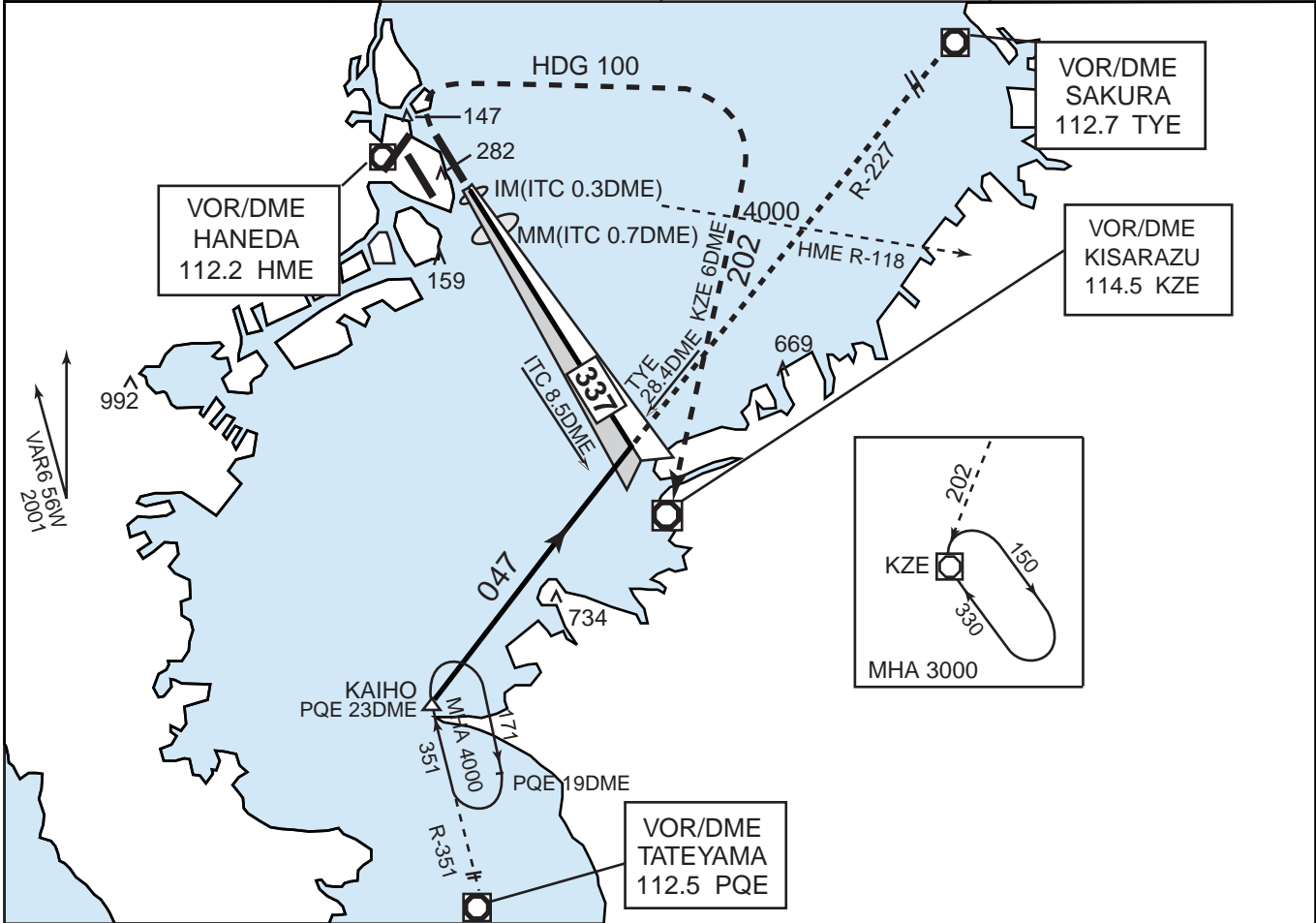
*Circling not authorized during the nighttime, except counterclockwise circling to 16R/16L/34R

TOKYO APP 119.1 - 119.4 - 119.7 126.5 - 236.8 - 261.2	KOHTOH VOR/DME 115.0 KWE CH-97X 35°36'20"N/139°49'07"E	TOKYO TOWER 118.1 - 124.35 - 118.8 126.2 - 236.8	RADAR AVAILABLE ATIS 128.8
---	---	--	-------------------------------



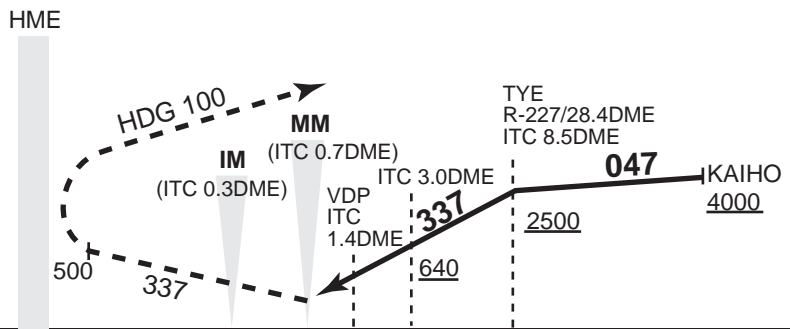
MINIMA		FIELD EVEV 21ft
STA TO RWY 22 MDA 620'		
PALS AVBL		PALS OUT
A		
B	VIS 3000m	VIS 4300m
C		
D		

TOKYO APP 119.1-119.4-119.7 126.5-236.8-261.2	ILS-LLZ 108.9 ITC	TOKYO TOWER 118.1-124.35-118.8 126.2-236.8	RADAR AVAILABLE ATIS 128.8
---	----------------------	--	-------------------------------



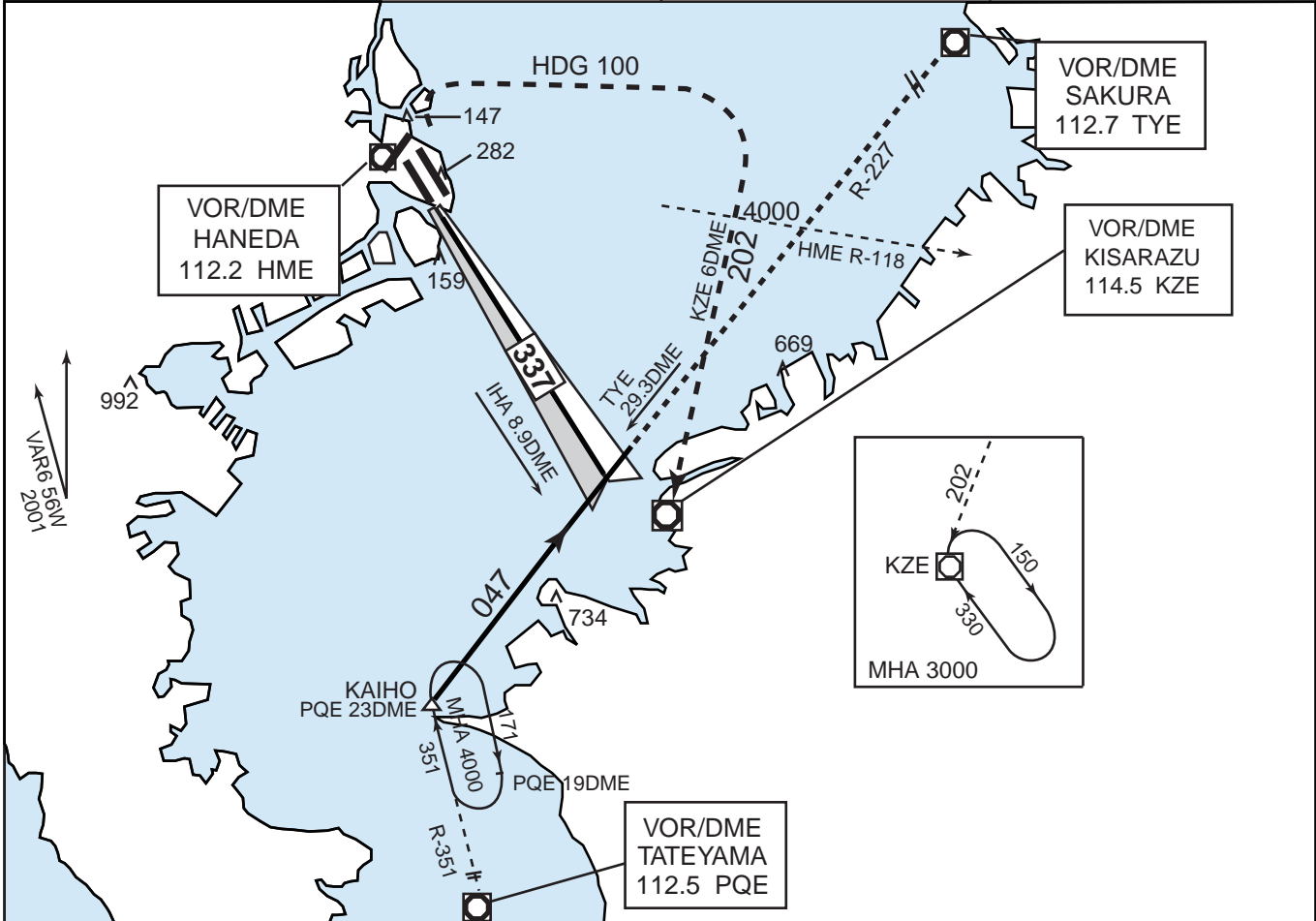
MISSED APPROACH

At MM/ITC 0.7DME, climb to 500' on 337°, turn right climb to 4000' via HDG 100° to intercept and proceed via KZE R-022 to KZE VOR/DME and hold.
 Cross KZE R-022/6DME (HME R-118) at 4000'.
 Contact TOKYO APP.



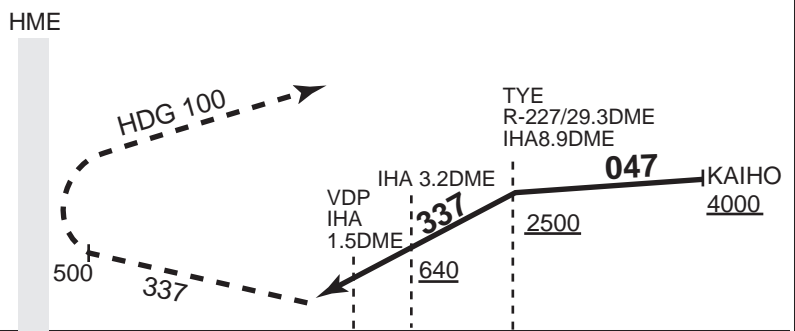
MINIMA		FIELD ELEV 21FT	
	STA TO RWY 34R MDA 440'		CIRCLING MDA-VIS
	PALS AVBL	PALS OUT	
A	RVR 1200m VIS 1200m	RVR 1400m VIS 1400m	600'-1600m
B		RVR 1600m VIS 1600m	620'-2400m
C			
D		VIS 2200m	620'-3200m

TOKYO APP 119.1-119.4-119.7 126.5-236.8-261.2	ILS-LLZ 111.7 IHA	TOKYO TOWER 118.1-124.35-118.8 126.2-236.8	RADAR AVAILABLE ATIS 128.8
---	----------------------	--	-------------------------------



MISSED APPROACH

At MM/ITC 0.7DME, climb to 500' on 337°, turn right climb to 4000' via HDG 100° to intercept and proceed via KZE R-022 to KZE VOR/DME and hold.
 Cross KZE R-022/6DME (HME R-118) at 4000'.
 Contact TOKYO APP.



MINIMA		FIELD ELEV 21FT
--------	--	-----------------

	STA TO RWY 34R MDA 440'		CIRCLING MDA-VIS
	PALS AVBL	PALS OUT	
A	RVR 1200m VIS 1200m	RVR 1400m VIS 1400m	600'-1600m
B		RVR 1600m VIS 1600m	
C		VIS 2200m	620'-3200m
D			

JONAN NORTH ARRIVAL

From over TLE, via TLE R-189 to AVION, turn right to intercept and proceed via OJC R-324 to AMUSE via OBITU, then turn left to JONAN. Cross HONDA at or above 8,000FT, cross OBITU at or above 4,000FT, cross AMUSE at or above 2,500FT, cross JONAN at or above 2,000FT.

JONAN SOUTH ARRIVAL

From over WESTN, via OJC R-240 (OTAKI, via OJC R-195) to OJC VORTAC, OJC R-324 to AMUSE, then turn left to JONAN, Cross OJC R-324/17DME at or below FL140, cross OBITU at or above 4,000FT, cross AMUSE at or above 2,500FT, cross JONAN at or above 2,000FT.

ASAHI NORTH ARRIVAL

From over TLE, via TLE R-189 to KOTBE, turn right to intercept and proceed via OJC R-333 to MESSE via SOGAR, then turn left to ASAHI. Cross HONDA at or above 8,000FT, cross MESSE at or above 4,000FT, cross ASAHI at or above 3,000FT.

ASAHI SOUTH ARRIVAL

From over WESTN, via OJC R-240 (OTAKI, via OJC R-195) to OJC VORTAC, via, OJC R-333 to MESSE, then turn left to ASAHI. Cross OJC R-333/17DME at or below FL140, cross MESSE at or above 4,000FT, cross ASAHI at or above 3,000FT.

DREAM NORTH ARRIVAL

From over TLE, via TLE R-189 to HONDA, turn right to intercept and proceed via OJC R-335 to YATSU via OASIS, via TYE R-261 to KASAI, then via IAD-LLZ to DREAM. Cross HONDA at or above 8,000FT, cross YATSU at or above 4,000FT, cross KASAI at or above 3,000FT.

DREAM SOUTH ARRIVAL

From over WESTN, via OJC R-240 (OTAKI via OJC R-195) to OJC VORTAC, via OLC R-335 to YATSU, via TYE R-261 to KASAI, then via IAD-LLZ to DREAM. Cross OJC R-335/17DME at or below FL140, cross YATSU at or above 4,000FT, cross KASAI at or above 3,000FT.

INTENTIONALLY LEFT BLANK

KISARAZU NORTH ARRIVAL

From over TLE VOR/DME, via TLE R-189 to NANSO, turn right to intercept
And proceed via OJC R-298 to KANOH.

Cross HONDA at or above 8,000FT,...

ILS NR.1 RWY34L:via OJC R-298 to KOITO, then via IHA-LLZ to MICKY.

Cross KOITO at or above 3,000FT.

ILS NR.3 RWY34L:via OJC R-298 to KOITO, then via IHA-LLZ to VERSO.

Cross KOITO at or above 4,000FT.

ILS NR.2 RWY34R:via ITC-LLZ to TOMAS.

Cross KANOH at or above 3,000FT.

ILS NR.4 RWY34R:via ITC-LLZ to RECTO.

Cross KANOH at or above 4,000FT.

VOR/DME RWY34L:via KZE R-157 to KZE VOR/DME.

Cross KZE VOR/DME at 3,000FT.

KISARAZU SOUTH ARRIVAL

From over WESTN, via OJC R-240 to 6DME, turn left to intercept and proceed via
OJC R-298(OTAKI, via OJC R-195 to OJC VORTAC, via OJC R-298) to KANOH,...

ILS NR.1 RWY34L:via OJC R-298 to KOITO, then via IHA-LLZ to MICKY.

Cross KOITO at or above 3,000FT.

ILS NR.3 RWY34L:via OJC R-298 to KOITO, then via IHA-LLZ to VERSO.

Cross KOITO at or above 4,000FT.

ILS NR.2 RWY34R:via ITC-LLZ to TOMAS.

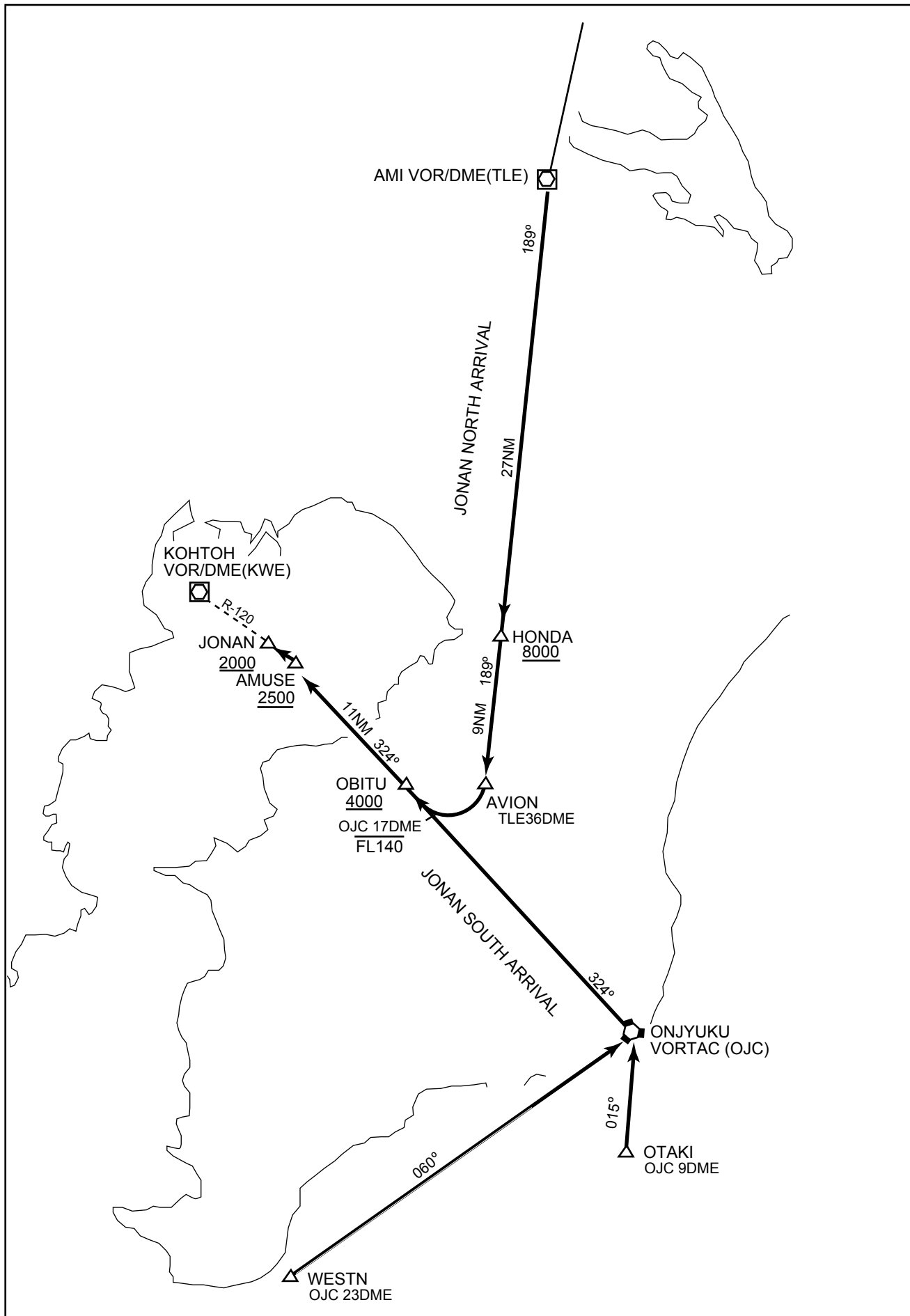
Cross KANOH at or above 3,000FT.

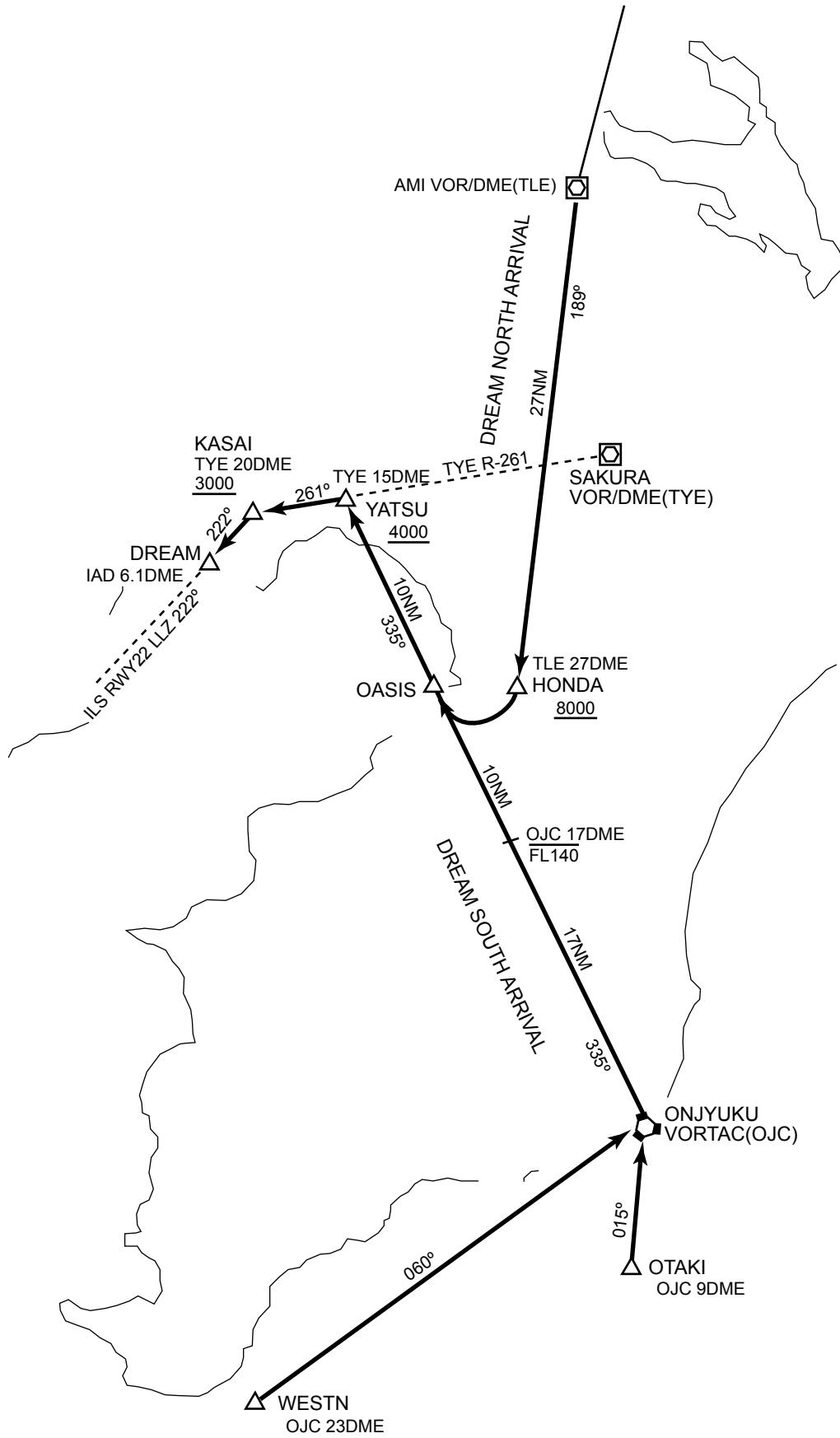
ILS NR.4 RWY34R:via ITC-LLZ to RECTO.

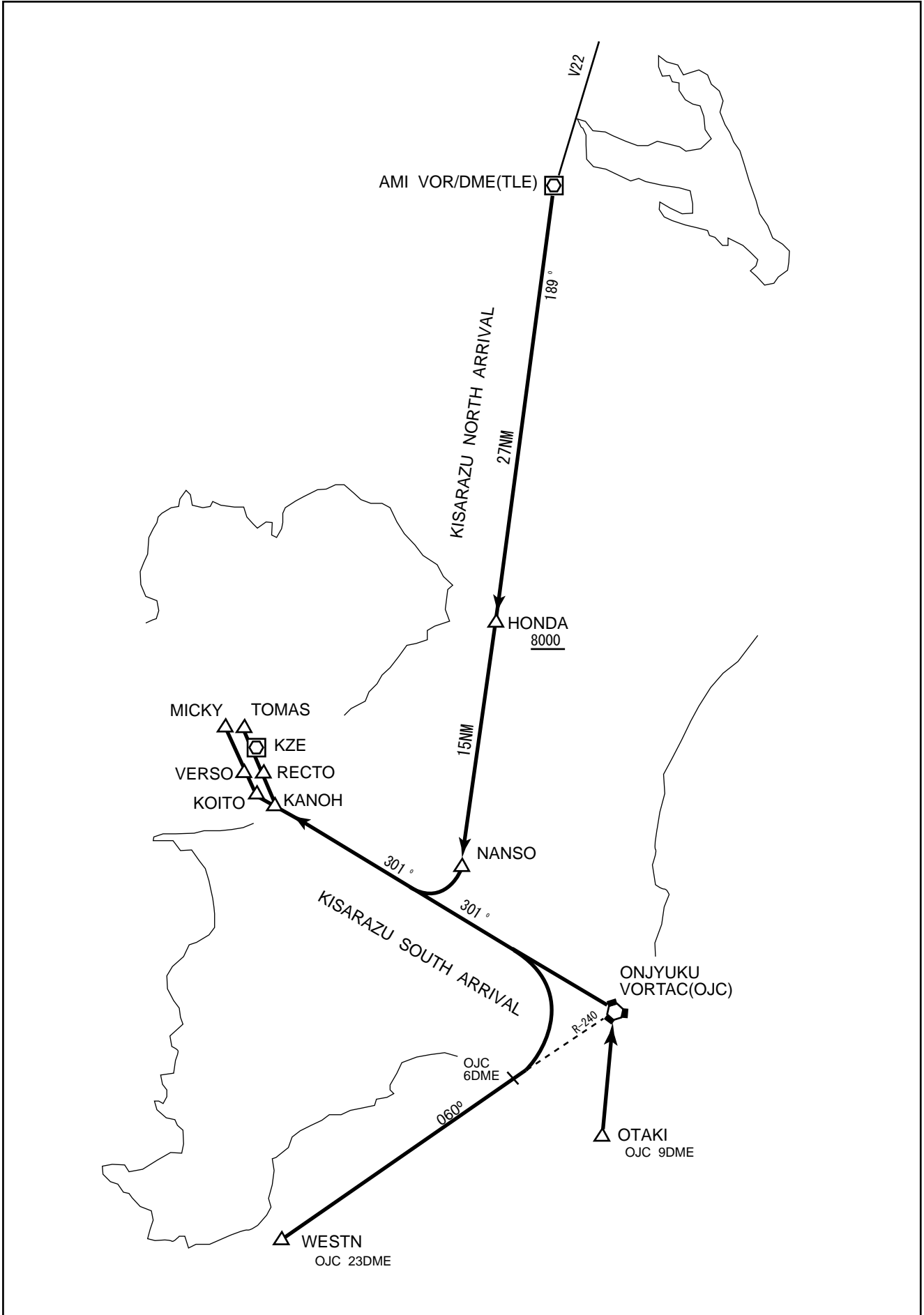
Cross KANOH at or above 4,000FT.

VOR/DME RWE34L:via KZE R-157 to KZE VOR/DME.

Cross KZE VOR/DME at 3,000FT.







JONAN NIGHT NORTH ARRIVAL

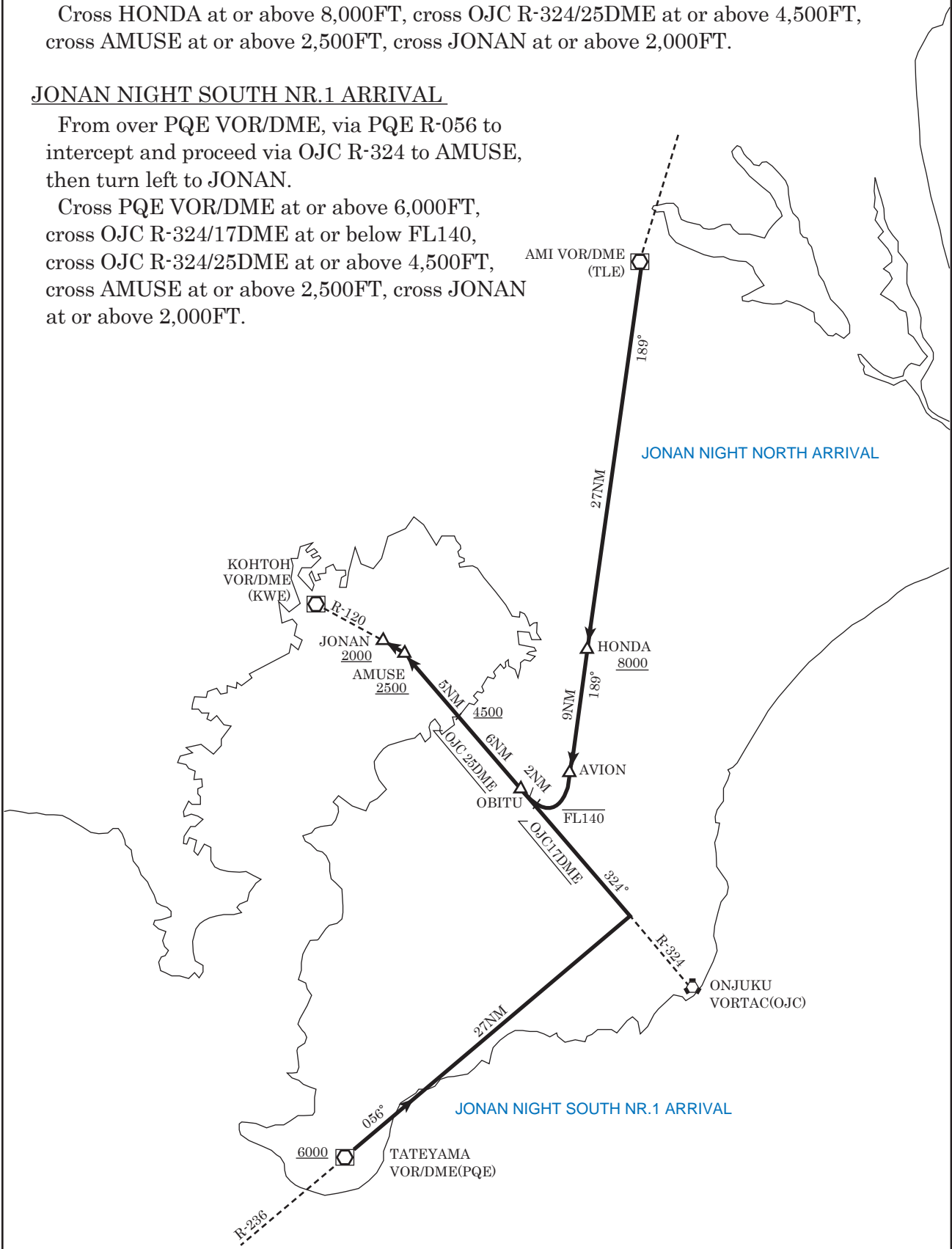
From over TLE VOR/DME, via TLE R-189 to AVION, turn right to intercept and proceed via OJC R-324 to AMUSE, then turn left to JONAN.

Cross HONDA at or above 8,000FT, cross OJC R-324/25DME at or above 4,500FT, cross AMUSE at or above 2,500FT, cross JONAN at or above 2,000FT.

JONAN NIGHT SOUTH NR.1 ARRIVAL

From over PQE VOR/DME, via PQE R-056 to intercept and proceed via OJC R-324 to AMUSE, then turn left to JONAN.

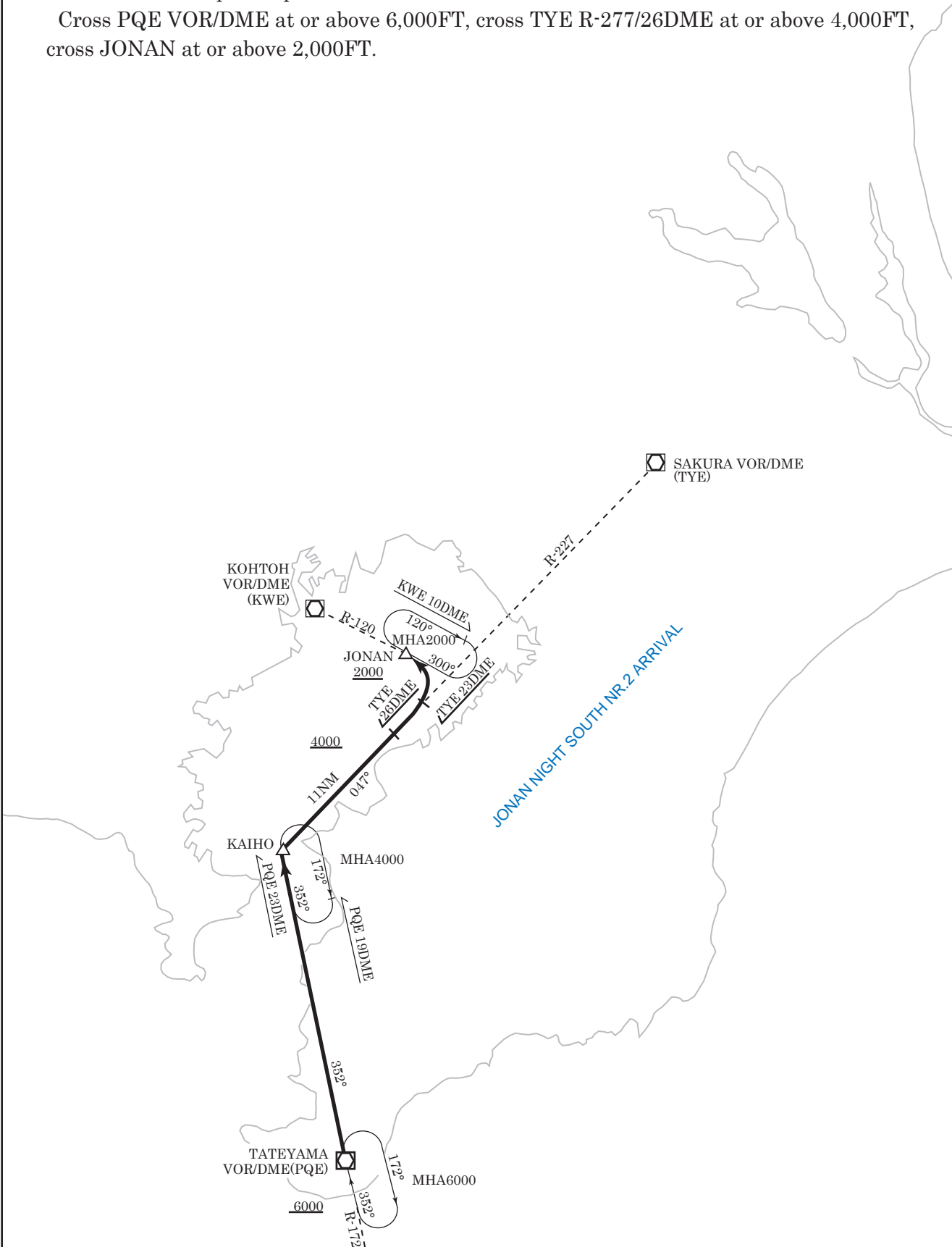
Cross PQE VOR/DME at or above 6,000FT, cross OJC R-324/17DME at or below FL140, cross OJC R-324/25DME at or above 4,500FT, cross AMUSE at or above 2,500FT, cross JONAN at or above 2,000FT.



JONAN NIGHT SOUTH NR.2 ARRIVAL

From over PQE VOR/DME, via PQE R-352 to KAIHO, then via TYE R-227 to TYE 23DME, turn left to intercept and proceed via KWE R-120 to JONAN.

Cross PQE VOR/DME at or above 6,000FT, cross TYE R-277/26DME at or above 4,000FT, cross JONAN at or above 2,000FT.



ASAHI NIGHT NORTH ARRIVAL

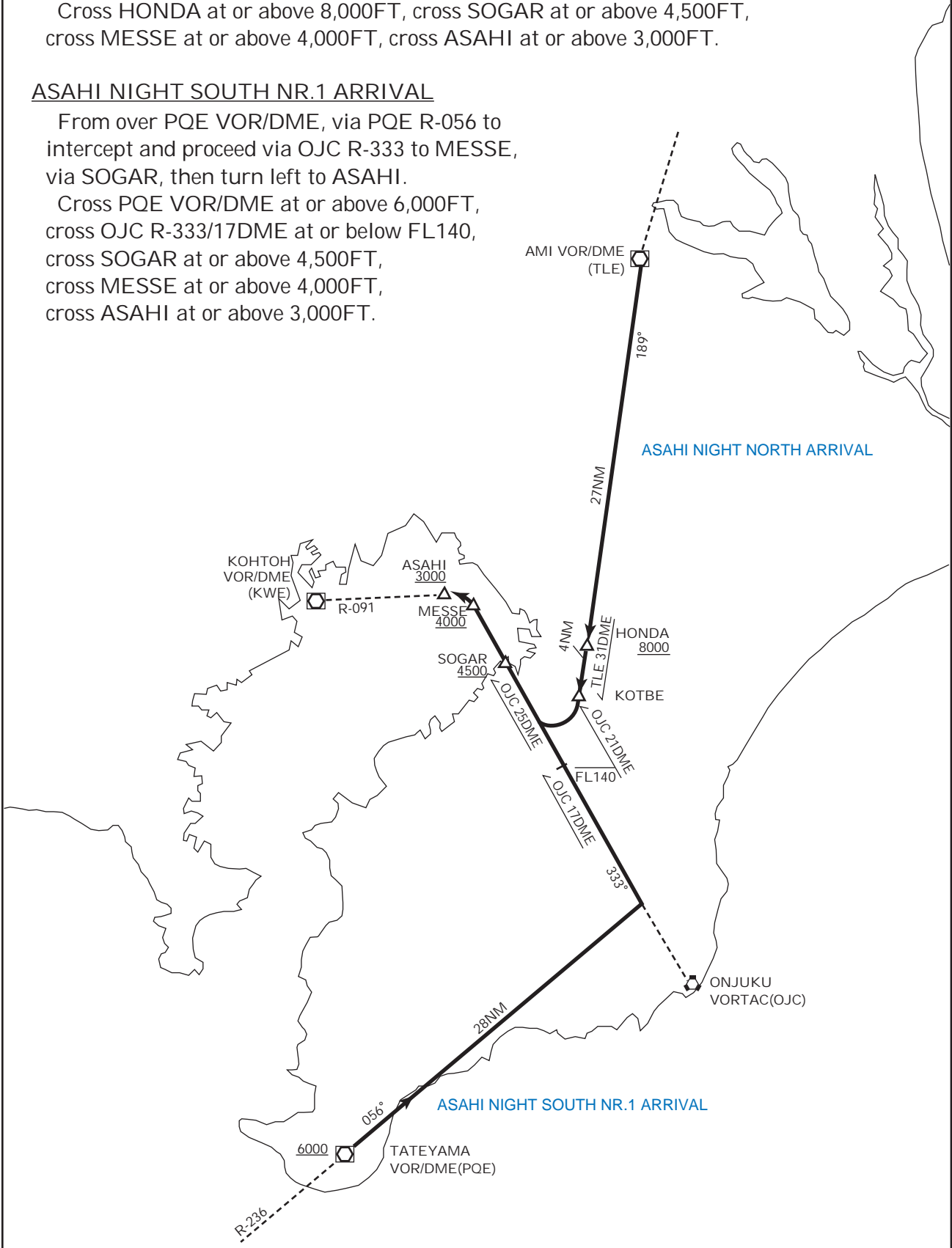
From over TLE VOR/DME, via TLE R-189 to KOTBE, turn right to intercept and proceed via OJC R-333 to MESSE via SOGAR, then turn left to ASAHI.

Cross HONDA at or above 8,000FT, cross SOGAR at or above 4,500FT, cross MESSE at or above 4,000FT, cross ASAHI at or above 3,000FT.

ASAHI NIGHT SOUTH NR.1 ARRIVAL

From over PQE VOR/DME, via PQE R-056 to intercept and proceed via OJC R-333 to MESSE, via SOGAR, then turn left to ASAHI.

Cross PQE VOR/DME at or above 6,000FT, cross OJC R-333/17DME at or below FL140, cross SOGAR at or above 4,500FT, cross MESSE at or above 4,000FT, cross ASAHI at or above 3,000FT.



ASAHI NIGHT SOUTH NR.2 ARRIVAL

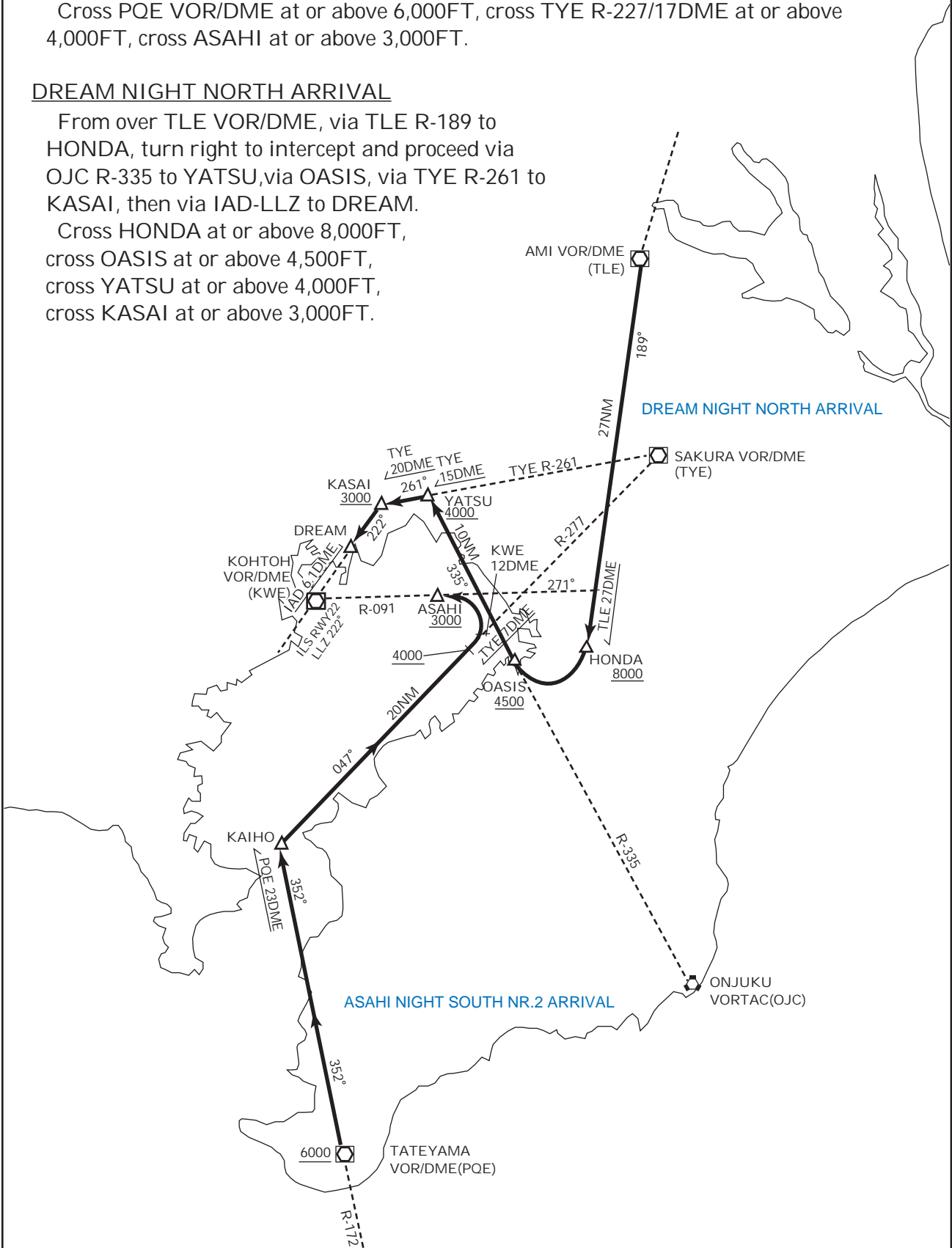
From over POE VOR/DME, via POE R-352 to KAIHO, then via TYE R-227 to TYE 17DME, turn left to intercept and proceed via KWE R-091 to ASAHI.

Cross POE VOR/DME at or above 6,000FT, cross TYE R-227/17DME at or above 4,000FT, cross ASAHI at or above 3,000FT.

DREAM NIGHT NORTH ARRIVAL

From over TLE VOR/DME, via TLE R-189 to HONDA, turn right to intercept and proceed via OJC R-335 to YATSU, via OASIS, via TYE R-261 to KASAI, then via IAD-LLZ to DREAM.

Cross HONDA at or above 8,000FT, cross OASIS at or above 4,500FT, cross YATSU at or above 4,000FT, cross KASAI at or above 3,000FT.



DREAM NIGHT SOUTH ARRIVAL

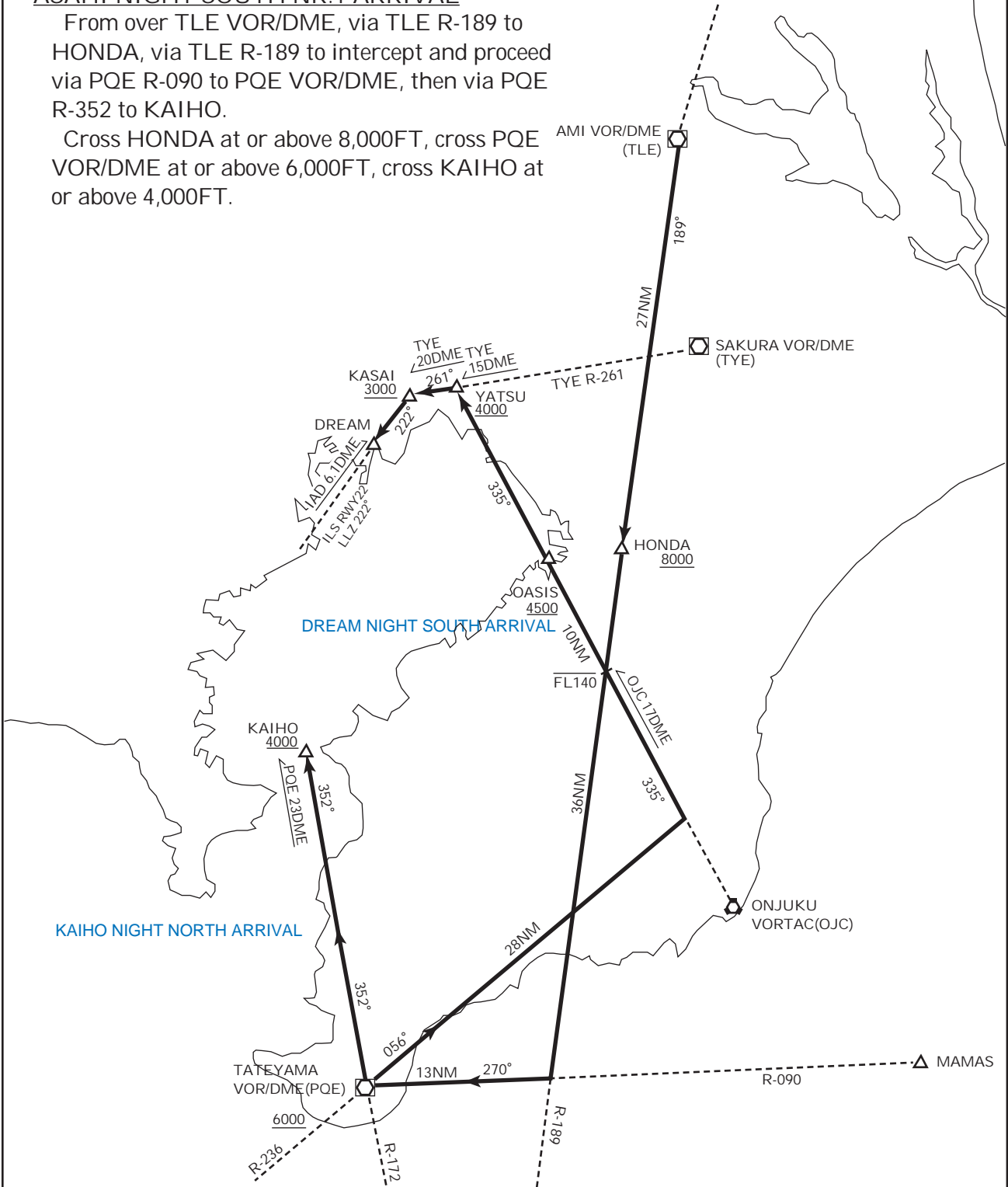
From over PQE VOR/DME, via PQE R-056 to intercept and proceed via OJC R-335 to YATSU via OASIS via TYE R-261 to KASAI, then via IAD-LLZ to DREAM.

Cross PQE VOR/DME at or above 6,000FT, cross OJC R-335/17DME at or below FL140, cross OASIS at or above 4,500FT, cross YATSU at or above 4,000FT. cross KASAI at or above 3,000FT.

ASAHI NIGHT SOUTH NR.1 ARRIVAL

From over TLE VOR/DME, via TLE R-189 to HONDA, via TLE R-189 to intercept and proceed via PQE R-090 to PQE VOR/DME, then via PQE R-352 to KAIHO.

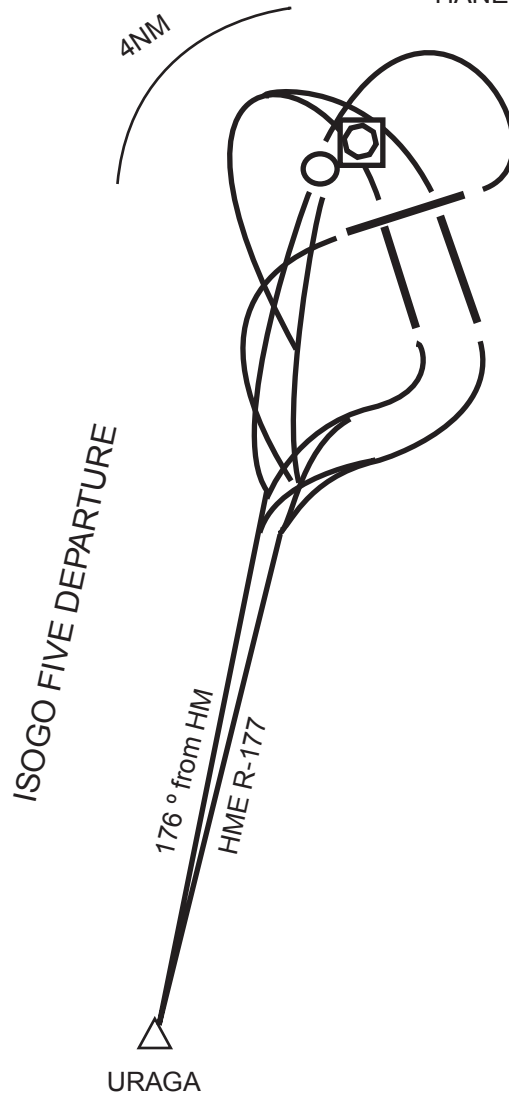
Cross HONDA at or above 8,000FT, cross PQE VOR/DME at or above 6,000FT, cross KAIHO at or above 4,000FT.



ISOGO FIVE DEPARTURE (FOR PROP ONLY)

RWY 04/22/34R/34L Climb RWY HDG to 500FT or above, turn left within 4NM...
RWY 16R/16L Climb RWY HDG to 500FT or above, turn right,...
....climb via HME R-177 (176 DEG from HM) to URAGA.

HANEDA VOR/DME(HME) 112.2
HANEDA NDB(HM) 337

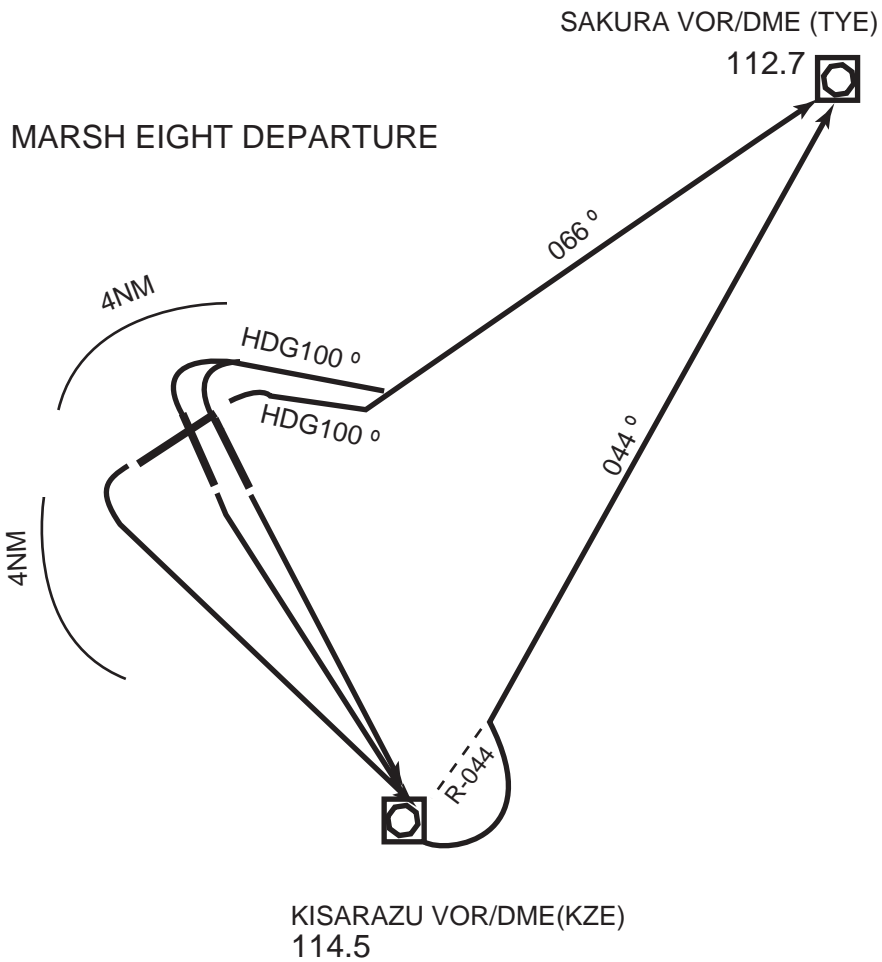


MARSH EIGHT DEPARTURE

RWY 04/34R/34L Climb RWY HDG to 500FT or above, turn right within 4NM, climb via HDG 100 to intercept and proceed via TYE R-246 to TYE.

RWY 22 Climb RWY HDG to 500FT or above, turn left within 4NM, proceed to KZE

RWY 16R/16L Climb RWY HDG to 500FT or above, proceed to KZE
.....Turn left to intercept and proceed via KZE R-044 to TYE.

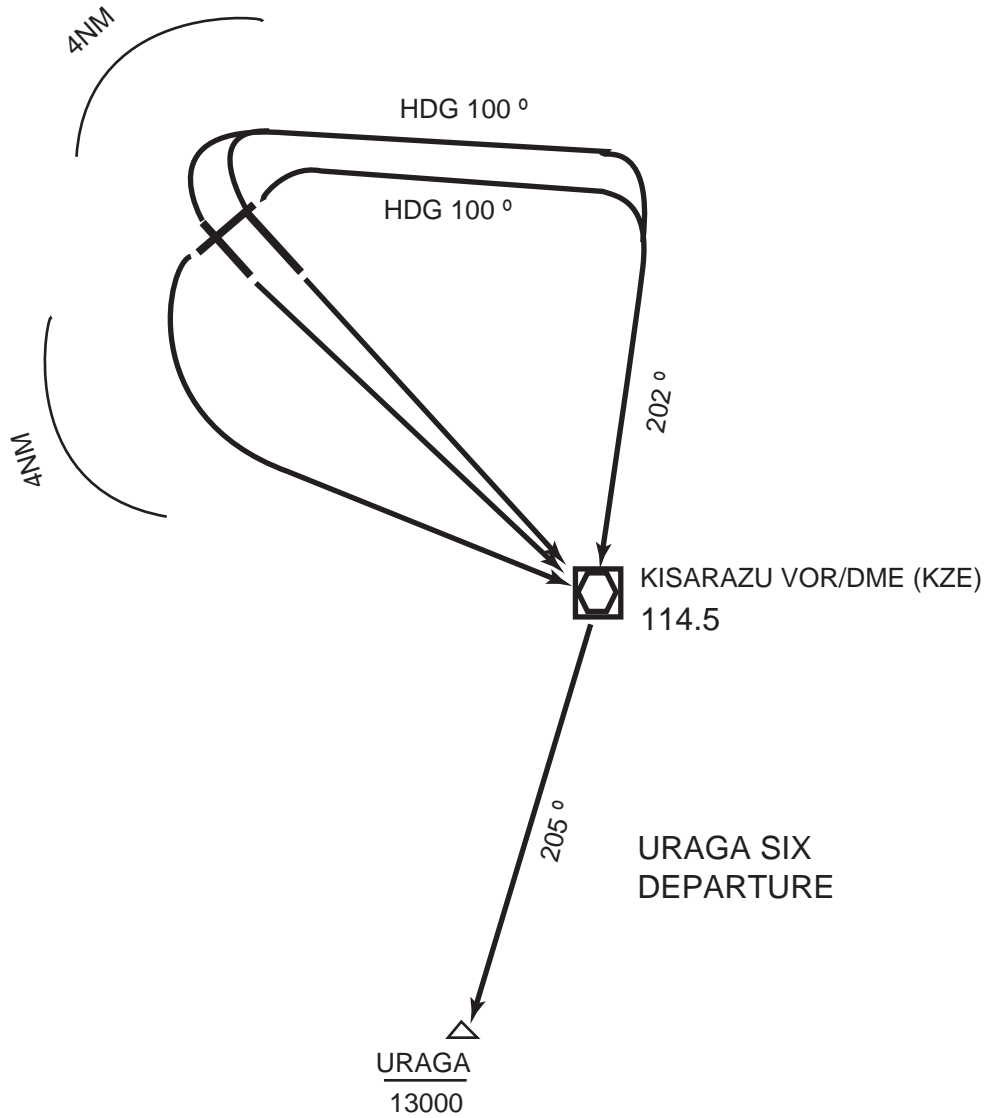


URAGA SIX DEPARTURE

RWY 04/34R/34L Climb RWY HDG to 500FT or above, turn right within 4NM, climb via HDG100 DEG to intercept and proceed via KZE R-022 to KZE ,.....

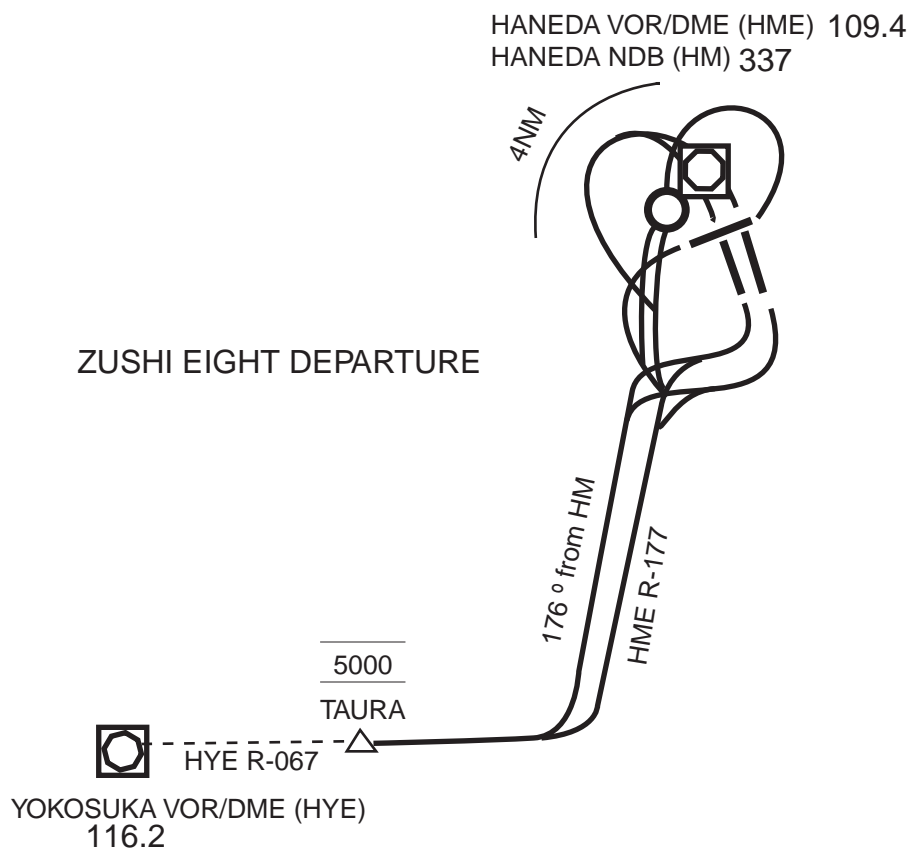
RWY 22 Climb RWY HDG to 500FT or above, turn left within 4NM, proceed to KZE.....

RWY 16R/16L Climb RWY HDG to 500FT or above, proceed to KZE,.....
.....Climb via KZE R-205 to URAGA.
Cross URAGA at or below 13,000FT.



ZUSHI EIGHT DEPARTURE (FOR PROP ONLY)

RWY 04/22/34R/34L Climb RWY HDG to 500FT or above, turn left within 4NM....
RWY 16R/16L Climb RWY HDG to 500FT or above, turn right,.....
.....climb via HME R-177 (176DEG from HM) to intercept and
proceed via HYE R-067 to TAURA.
Cross TAURA at 5,000FT.



HUMMINGBIRD TWO DEPARTURE (FOR JET AIRCRAFT ONLY)

RWY 34L : Climb RWY HDG to 500FT or above, turn left within 4NM/HME 4DME.
climb via HME R-187 to intercept and proceed via HME R-067 to TAURA.

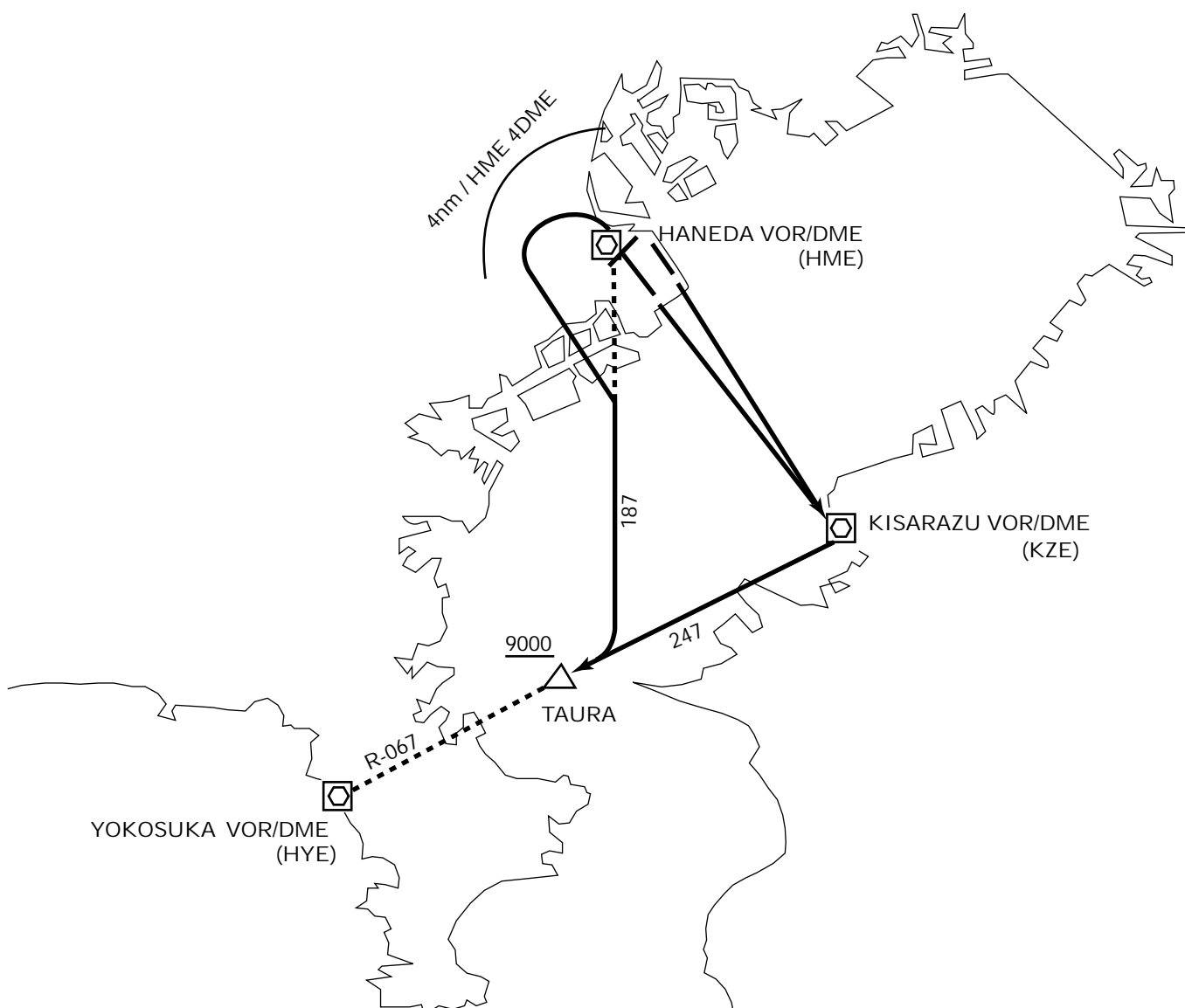
RWY 16L/R : Climb RWY HDG to 500FT or above, proceed to KZE VOR/DME
then via KZE R-247 to TAURA.

CrossTAURA at or above 9,000FT

NOTE 1 :This SID applies to authorized scheduled flights only

NOTE 2 :Aircraft intending to use this SID shall informTOKYO DELIVERY when
requesting ATC clearance.

NOTE 3 :Aircraft unable to comply with the altitude restriction shall request alternate
procedure when requesting ATC clearance.

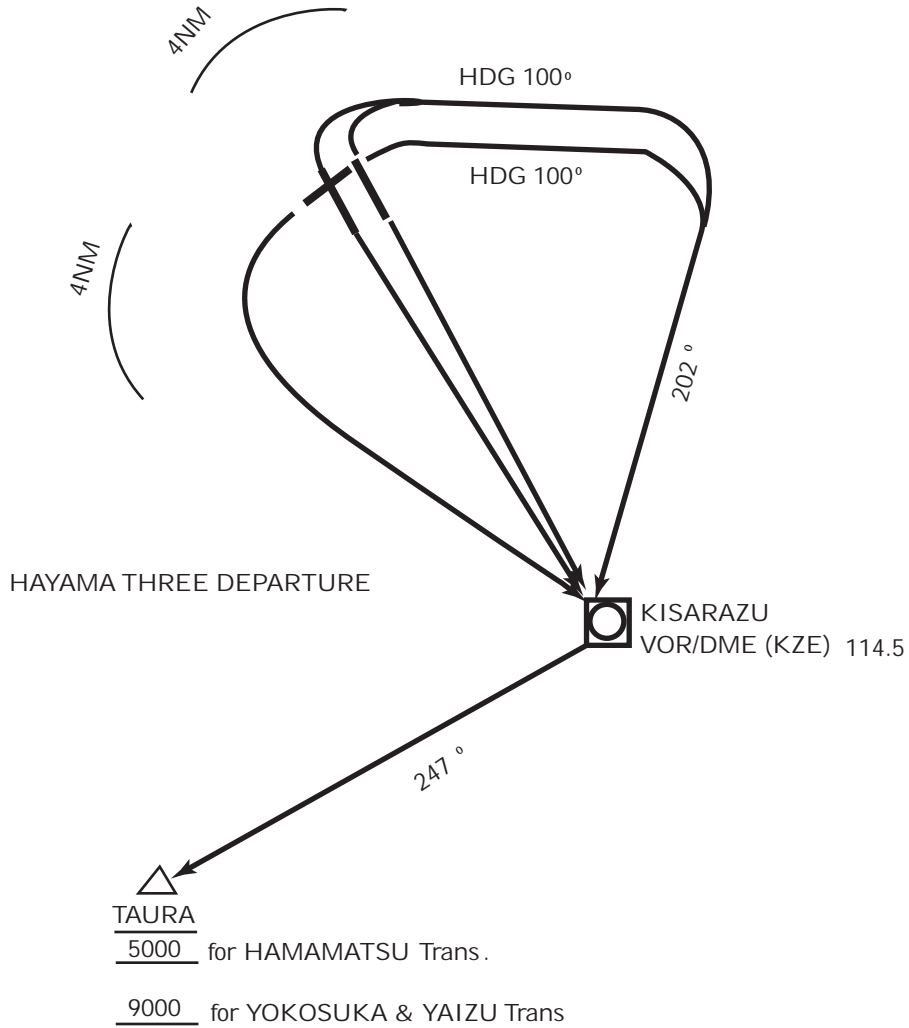


HAYAMA THREE DEPARTURE

RWY 04/34R/34L Climb RWY HDG to 500FT or above, turn right within 4NM, climb via HDG100 DEG to intercept and proceed via KZE R-022 to KZE VOR/DME ...

RWY 22 Climb RWY HDG to 500FT or above, turn left within 4NM, proceed to KZE VOR/DME...

RWY 16R/16L Climb RWY HDG to 500FT or above, proceed to KZE VOR/DME,...
.....Climb via KZE R-247 to TAURA.
Cross TAURA at 5,000FT for HAMAMATSU TRANSITION,
at or above 9,000FT for YOKOSUKA TRANSITION and
YAIZU TRANSITION.



ZAMA SEVEN DEPARTURE

RWY 04/34R/34L : Climb RWY HDG to 500FT or above, turn right within 4NM,
Climb via HDG 100DEG to intercept and proceed via HME R-072
to 10DMME (072DEG from HM NDB until crossing KZE R-015),
turn right via KZE R-030 to 3DME, then turn right to intercept
and proceed via KZE R-299 to DF NDB or KZE R-299/28DME via
CANAL,....

RWY 22 : Climb RWY HDG to 500FT or above, turn left within 4NM, proceed to
KZE VOR/DME, climb via KZE R-150 to 4DME, then turn right via
HME R-170 (170DEG from HM NDB) to intercept and proceed via KZE R-
299 to DF NDB or KZE R-299/28DME via CANAL,....

RWY 16R/16L : Climb RWY HDG to 500FT or above, proceed to KZE VOR/DME,
Climb via KZE R-150 to 4DME, then turn right via HME R-170 (170
DEG from HM NDB) to intercept and proceed via KZE R-299 to DF
NDB or KZE R-299/28DME via CANAL,...

....Cross KZE R-299/7DME at or below FL150, cross CANAL at or
above 13,000FT, cross KZE R-199/22DME at or above FL170, cross DF
NDB or KZE R-299/28DME at or above FL190.

OPPAR ONE DEPARTURE

RWY04/34R/34L : Climb RWY HDG to 500FT or above, turn right within 4NM, climb via HDG 110DEG to HME 7DME, then turn right to intercept and proceed via HYE R-053 to OPPAR.

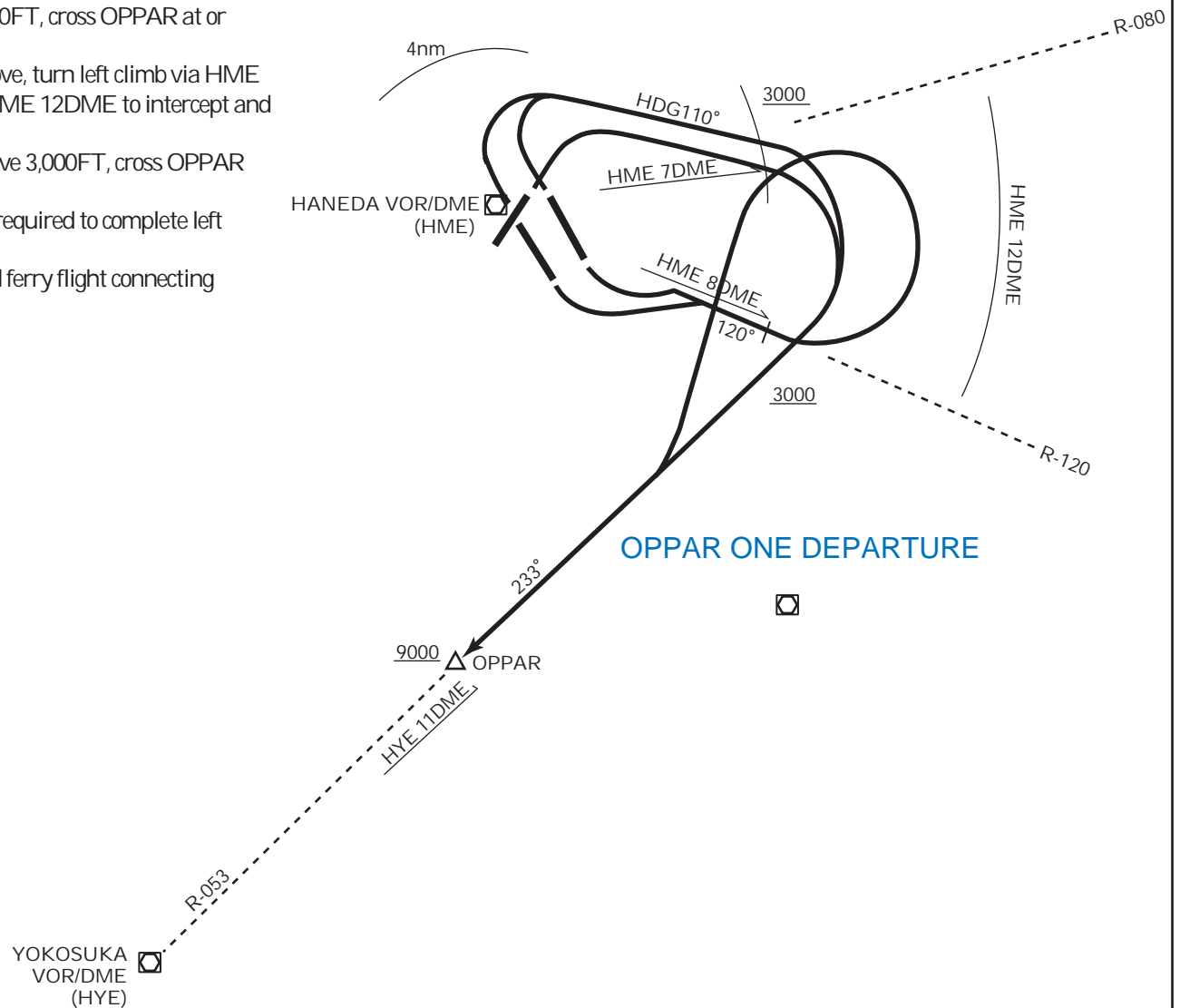
Cross HME 7DME at or above 3,000FT, cross OPPAR at or above 9,000FT.

RWY16R/16L : Climb RWY HDG to 500FT or above, turn left climb via HME R-120 to 8DME, then turn left within HME 12DME to intercept and proceed via HYE R-053 to OPPAR.

Cross HME R-120/8DME at or above 3,000FT, cross OPPAR at or above 9,000FT.

NOTE 1 : Aircraft taking off from RWY16R/16L are required to complete left turns south of HME R-080.

NOTE 2 : This SID applies to international flight and ferry flight connecting with international flight only.



YAIZU TRANSITION

From over TAURA, via HYE R-067 to HYE VOR/DME,...

(for Z10,Z12)...via HYE R-255 to YZ NDB.

(for Y21)...via HYE R-255 to YZ NDB, then via 207DEG from FZ NDB to CELLO.

(for A1)...via HYE R-255 to YZ NDB, then via 207DEG from YZ NDB to BANJO.

(for W28,Y52)...via HYE R-255 to YZ NDB, then via 207DEG from YZ NDB to SAKAK.

Cross HYE VOR/DME at 10,000FT, maintain 10,000FT until HYE R-255/15DME,

Cross YZ NDB at assigned altitude.

Note: Aircraft unable to comply with altitude restrictions, inform TOKYO DELIVEY

For alternate procedure when requesting ATC clearance.

OSHIMA TRANSITION

From over URAGA, proceed via KZE R-205 to HARIS, then via XAC R-054 to XAC VORTAC (233DEG to XA NDB), or OSE R-069 to OSE VOR/DME as specified by ATC.

MIYAKE TRANSITION

From over URAGA, proceed via POE R-357 to POE VOR/DME, then via POE R-204 To MOE VOR/DME or SCOTT.

TATEYAMA TRANSITION

From over URAGA, proceed via POE R-357 to POE VOR/DME, then via POE R-189 To HCE VOR/DME (HC NDB) or SANGO.

NAGOYA TRANSITION

From over DF NDB (KZE R-299/28DME), proceed via 268DEG from DF NDB (KZE R-299 to intercept and proceed via TYE R-266) to KCC VORTAC (KC NDB).

MATSUMOTO TRANSITION

From over DF NDB (KZE R-299/28DME), proceed via 303DEG from DF NDB (via KZE R-299 to 73DME, then via MBE R-128) to MBE VOR/DME.

Cross MBE R-123/36DME (KZE R-299/73DME/251DEG from AY NDB) at Or above FL240).

KOWA TRANSITION

From over DF NDB (KZE R-299/28DME), proceed via 268DEG from DF NDB (via KZE R-299) to intercept and proceed via SYE R-248 (SYE R-249) to XMC VORTAC (XM NDB).

YOKOSUKA TRANSITION

From over TAURA, proceed via HYE R-067 to HYE VOR/DME, via HYE R-263 to XMC VORTAC(HYE R-264 to XM NDB).

Cross HYE VOR/DME at 10,000FT, maintain 10,000FT until HYE R-263/14DME (HYE R-264/14DME), cross HYE R-263/65DME(HYE R-264/65DME) at assigned altitude.

HAMAMATSU TRANSITION

From over TAURA, via HYE R-067 to HYE VOR/DME, via HYE R-255 to YZ NDB, then via 268DEG from YZ NDB to LHE VOR/DME.

Cross HYE R-255/7DME (HYE R-255/15DME when assigned altitude at or above FL160) at 5,000FT.

OCEAN TRANSITION

From over URAGA, via KZE R-205 to intercept and proceed via OJC R-261 to OCEAN via MIURA,...

(for V17,V59,LHE VOR/DME)....via 269DEG to YZ NDB , then via LHE R-088 to LHE VOR/DME.

(for Z10,Z12)....via 269DEG to YZ NDB.

(for Y21)....via 269DEG to YZ NDB, then via 207DEG from YZ NDB to CELLO.

(for A1).... via 269DEG to YZ NDB, then via 207DEG from YZ NDB to BANJO.

(for W28,Y52)....via 269DEG to YZ NDB, then via 207DEG from YZ NDB to SAKAK.

Cross MIURA at or above FL150, cross OCEAN at or above FL190, cross YZ NDB at assigned altitude.

Note: Aircraft unable to comply with altitude restrictions, inform TOKYO DELIVERY for alternate procedure when requesting ATC clearance.

OPPAR SOUTH TRANSITION

From over OPPAR, via HYE R-053 to HYE VOR/DME,....

(for Z10,Z12)....via HYE R-255 to YZ NDB.

(for Y21)....via HYE R-255 to YZ NDB, then via 207DEG from YZ NDB to CELLO.

(for A1)....via HYE R-255 to YZ NDB, then via 207DEG from YZ NDB to BANJO.

(for W28,Y52)....via HYE R-255 to YZ NDB, then via 207Deg from YZ NDB to SAKAK.

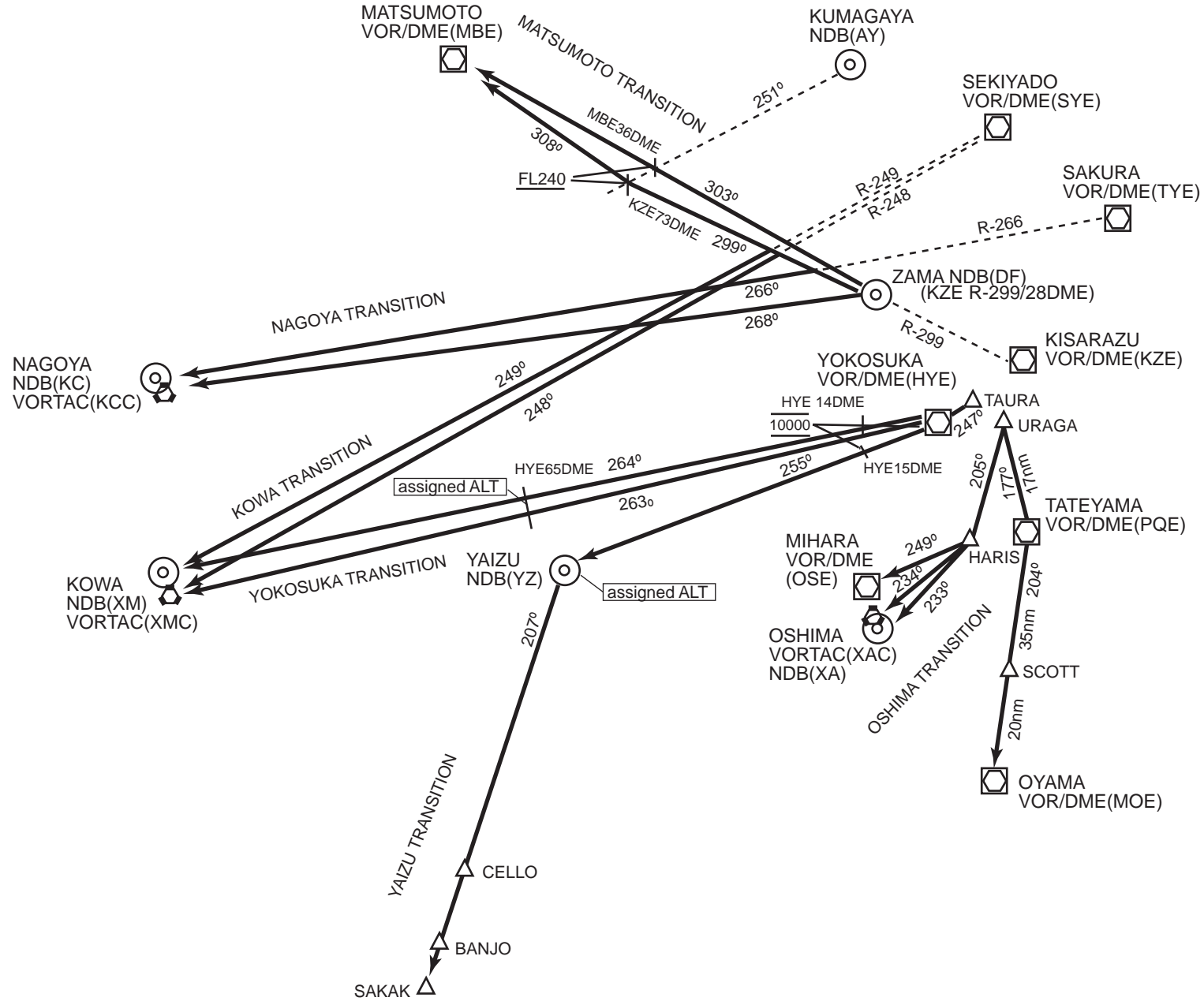
Cross HYE VOR/DME at 10,000FT, maintain 10,000FT until HYE R-255/15DME, cross YZ NDB at assigned altitude.

Note: Aircraft unable to comply with altitude restrictions, inform TOKYO DELIVERY for alternate procedure when requesting ATC clearance.

OPPAR WEST TRANSITION

From over OPPAR, via HYE R-053 to HYE VOR/DME, via HYE R-259 to LHE VOR/DME.

Cross HYE VOR/DME at 10,000FT, maintain 10,000FT until HYE R-259/14DME, cross HYE R-259/38DME at assigned altitude.



RJTT

TOKYO TRANSITION

