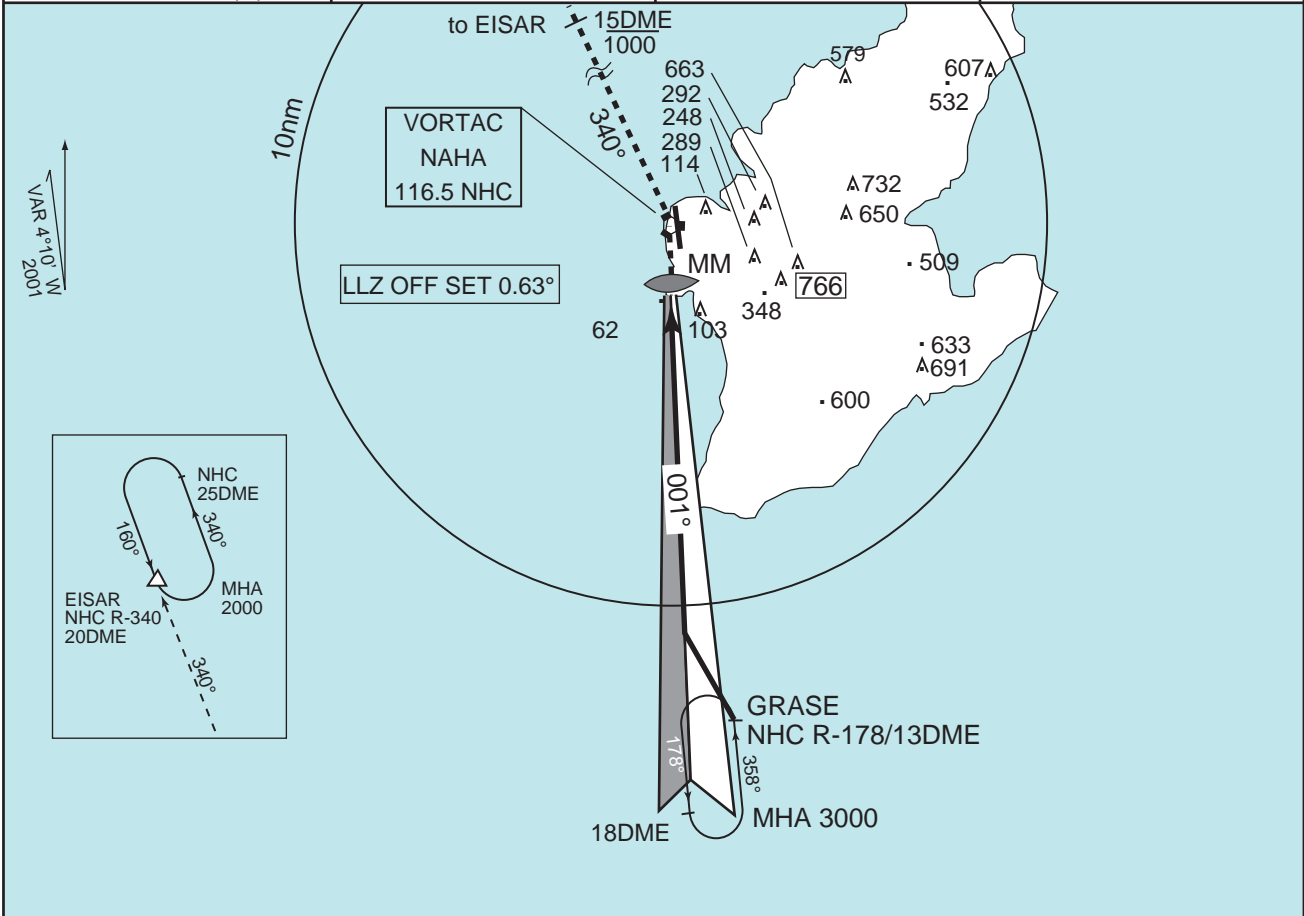


ROAH

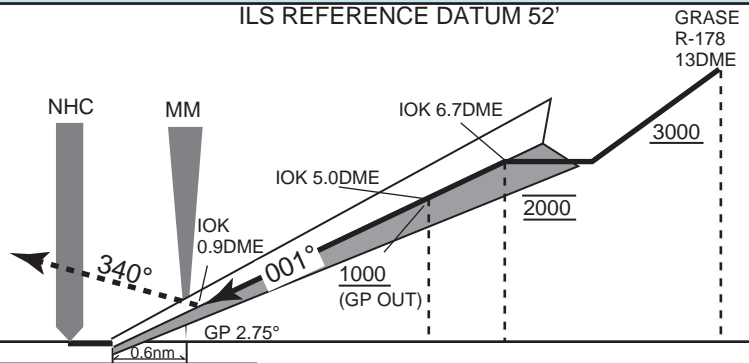
NAHA VORTAC/ILS RWY 36

| | | | |
|---|---|--|---------------------------------------|
| OKINAWA APP 119.1 - 335.8(N) 126.5 - 258.3(S) | ILS-LLZ 110.3 IOK ILS-GP 335.0 ILS-DME CH-40 | NAHA TOWER 118.1 - 126.2 308.6 - 236.6 | RADAR AVAILABLE ATIS 127.8 - 293.0 |
|---|---|--|---------------------------------------|



MISSED APPROACH

At DA, climb to 500' on 001° then turn left climb via NHC R-340 to EISAR and hold at 2000'. Maintain 1000' until NHC R-340/15DME. Contact OKINAWA APP.



MINIMA

FIELD ELEV 11ft
TDZ ELEV 11ft

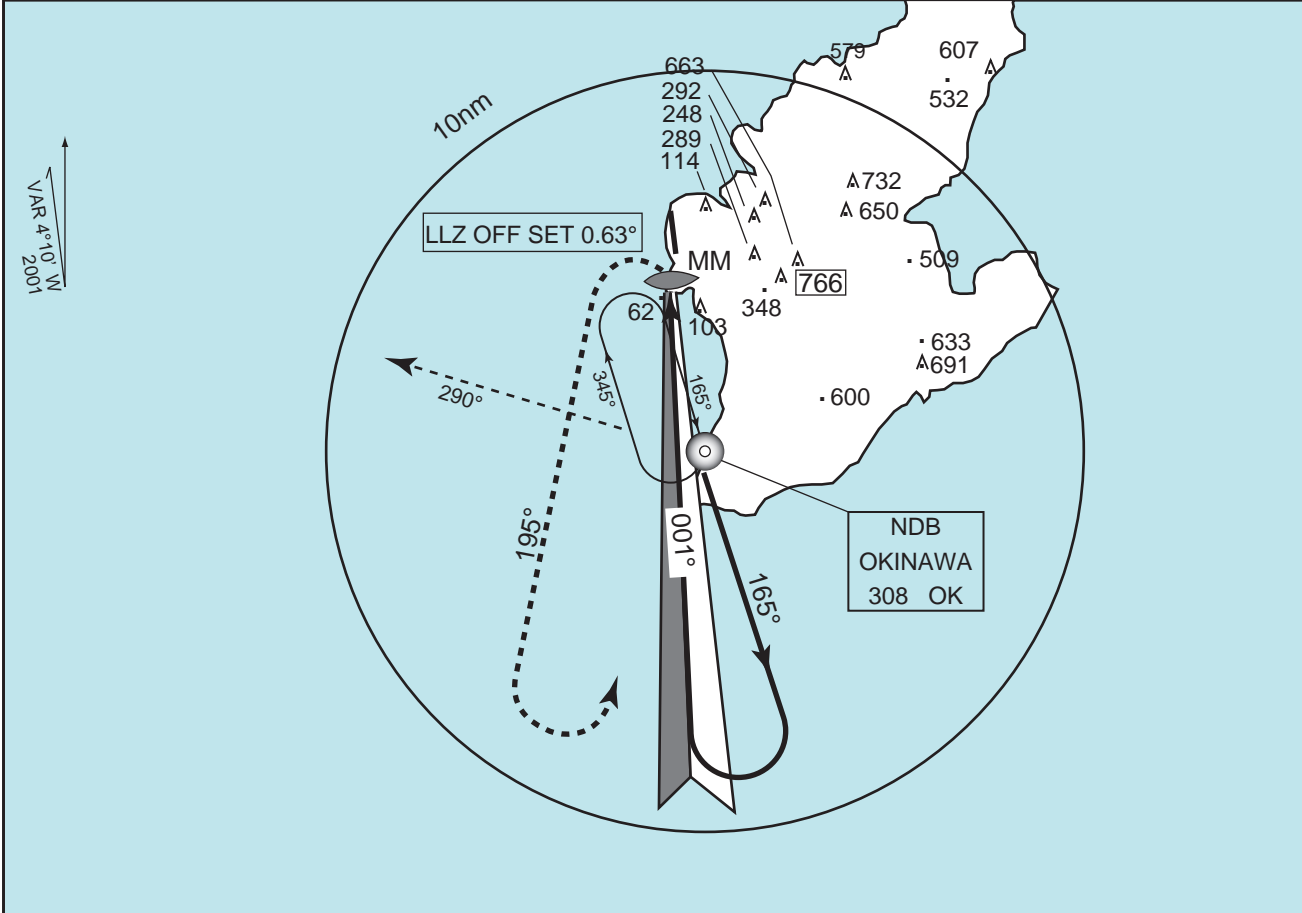
| | ILS STA TO RWY 36 | | (GP OUT) MDA 420' | | CIRCLING* MDA-VIS |
|---|----------------------|---------------------|------------------------|------------------------|----------------------|
| | RTZL & RCLL AVBL | RTZL & /or RCLL OUT | PALS OUT | PALS AVBL | |
| A | RVR 800m VIS 800m | | RVR 1200m VIS 1200m | RVR 1400m VIS 1400m | 480' - 1600m |
| B | | | | RVR 1500m VIS 1500m | |
| C | | | | RVR 1000m VIS 1000m | 580' - 3200m |
| D | | | | RVR 1000m VIS 1000m | |

*Circling to West side of RWY only.

ROAH

NAHA ADF/ILS RWY 36

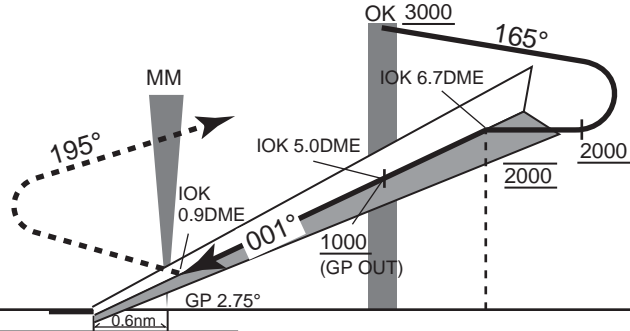
| | | | |
|---|---|--|---------------------------------------|
| OKINAWA APP 119.1 - 335.8(N) 126.5 - 258.3(S) | ILS-LLZ 110.3 IOK ILS-GP 335.0 ILS-DME CH-40 | NAHA TOWER 118.1 - 126.2 308.6 - 236.6 | RADAR AVAILABLE ATIS 127.8 - 293.0 |
|---|---|--|---------------------------------------|



MISSED APPROACH

At DA, turn left within 2nm climb via heading 195° to 3000'. Then turn left proceed to OK NDB and hold. Maintain 1000' until 290° from OK NDB. Contact OKINAWA APP.

ILS REFERENCE DATUM 52'



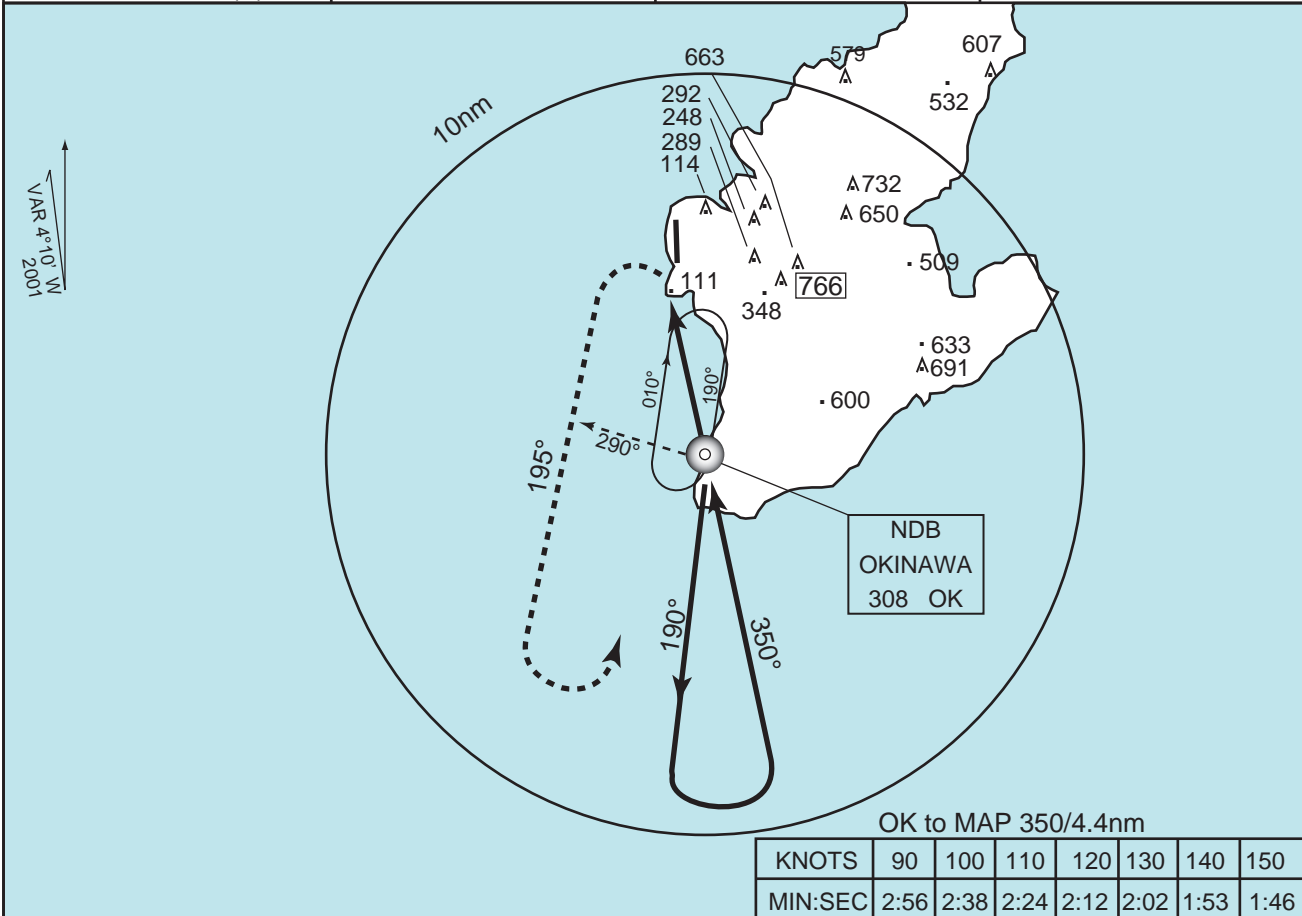
MINIMA

FIELD ELEV 11ft
TDZ ELEV 11ft

| | ILS STA TO RWY 36 | | (GP OUT) MDA 420' | | CIRCLING* MDA-VIS |
|---|--------------------------------|--------------------------|------------------------|------------------------|----------------------|
| | DA 261' RTZL & RCLL AVBL | RTZL &/or RCLL OUT | PALS OUT | PALS AVBL PALS OUT | |
| A | RVR 800m VIS 800m | RVR 1200m VIS 1200m | RVR 1200m VIS 1200m | RVR 1400m VIS 1400m | 480' - 1600m |
| B | | | | RVR 1500m VIS 1500m | |
| C | RVR 1000m VIS 1000m | RVR 1200m VIS 1200m | RVR 1200m VIS 1200m | RVR 1500m VIS 1500m | 480' - 2400m |
| D | | | | VIS 2100m | |

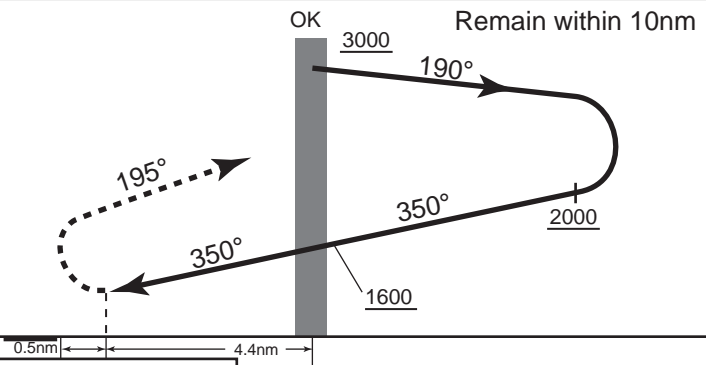
*Circling to West side of RWY only.

| | | | |
|---|-----------------------|--|---------------------------------------|
| OKINAWA APP 119.1 - 335.8(N) 126.5 - 258.3(S) | OKINAWA NDB 308 OK | NAHA TOWER 118.1 - 126.2 308.6 - 236.6 | RADAR AVAILABLE ATIS 127.8 - 293.0 |
|---|-----------------------|--|---------------------------------------|



MISSED APPROACH

At 4.4nm after OK MDB, turn left within 2nm climb via heading 195° to 3000'. Then turn left proceed to OK NDB and hold. Maintain 1000' until 290° from OK NDB. Contact OKINAWA APP.



MINIMA

FIELD ELEV 11ft

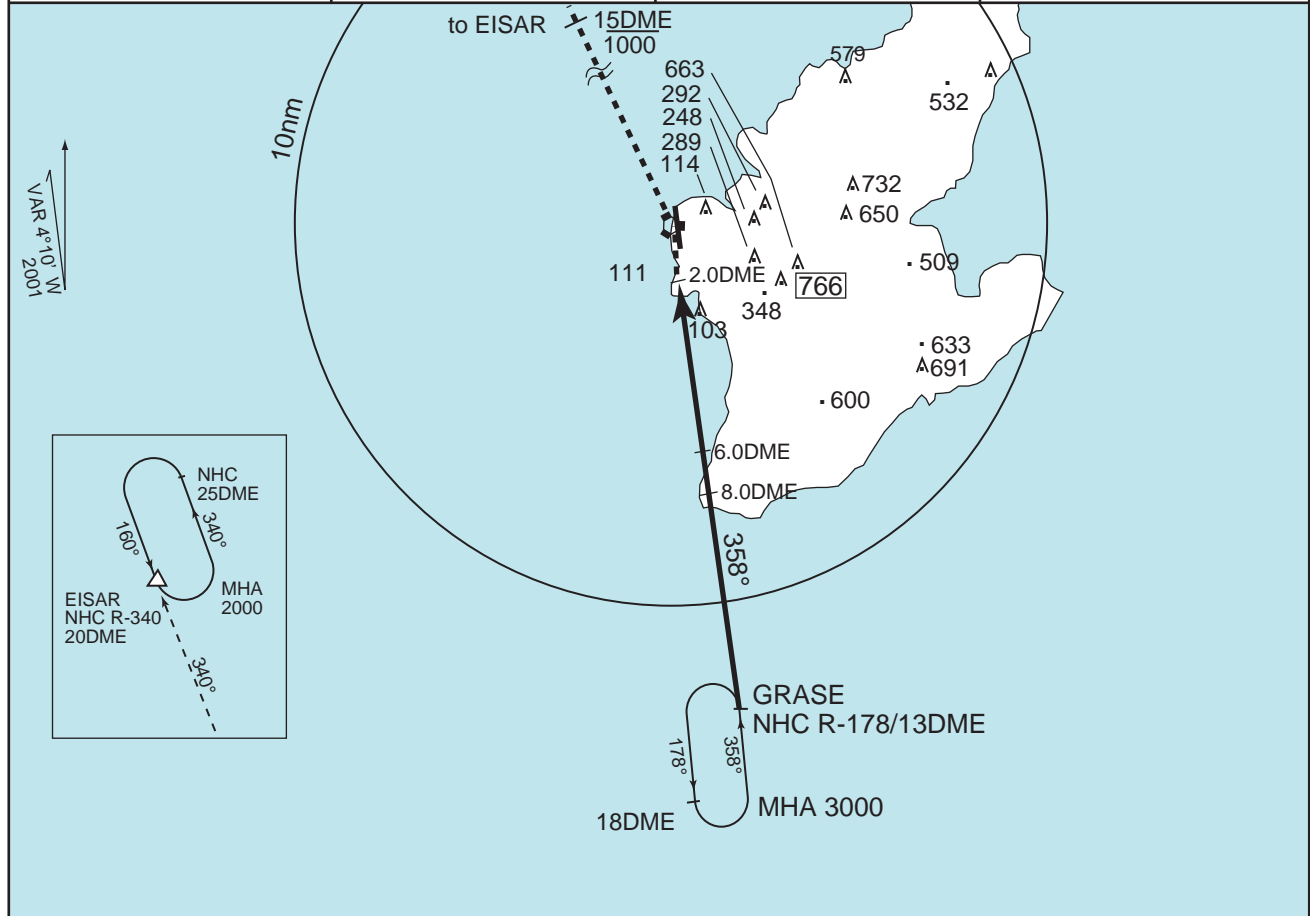
| | STA TO RWY | CIRCRING* MDA-VIS |
|---|------------|----------------------|
| A | - | 800' - 1600m |
| B | | 800' - 2400m |
| C | | 800' - 3200m |
| D | | |

*Circling to West side of RWY only.

ROAH

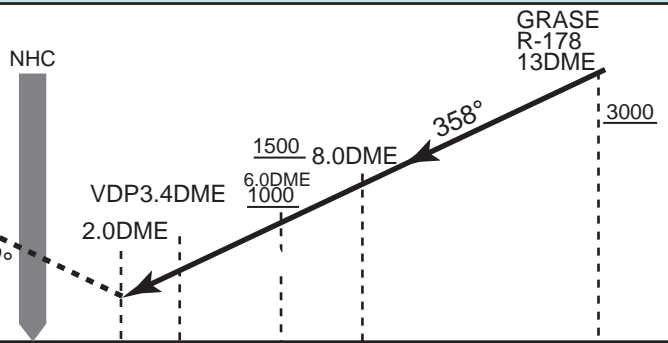
NAHA VORTAC RWY 36

| | | | |
|---|------------------------------------|--|---------------------------------------|
| OKINAWA APP 119.1 - 335.8(N) 126.5 - 258.3(S) | NAHA VORTAC 116.5 NHC CH-112 | NAHA TOWER 118.1 - 126.2 308.6 - 236.6 | RADAR AVAILABLE ATIS 127.8 - 293.0 |
|---|------------------------------------|--|---------------------------------------|



MISSED APPROACH

At 2.0DME prior to NHC VORTAC, turn left, climb via NHC R-340 to EISAR and hold at 2000' .
Maintain 1000' until NHC R-340/15DME.
Contact OKINAWA APP.



MINIMA

FIELD ELEV 11ft
TDZ ELEV 11ft

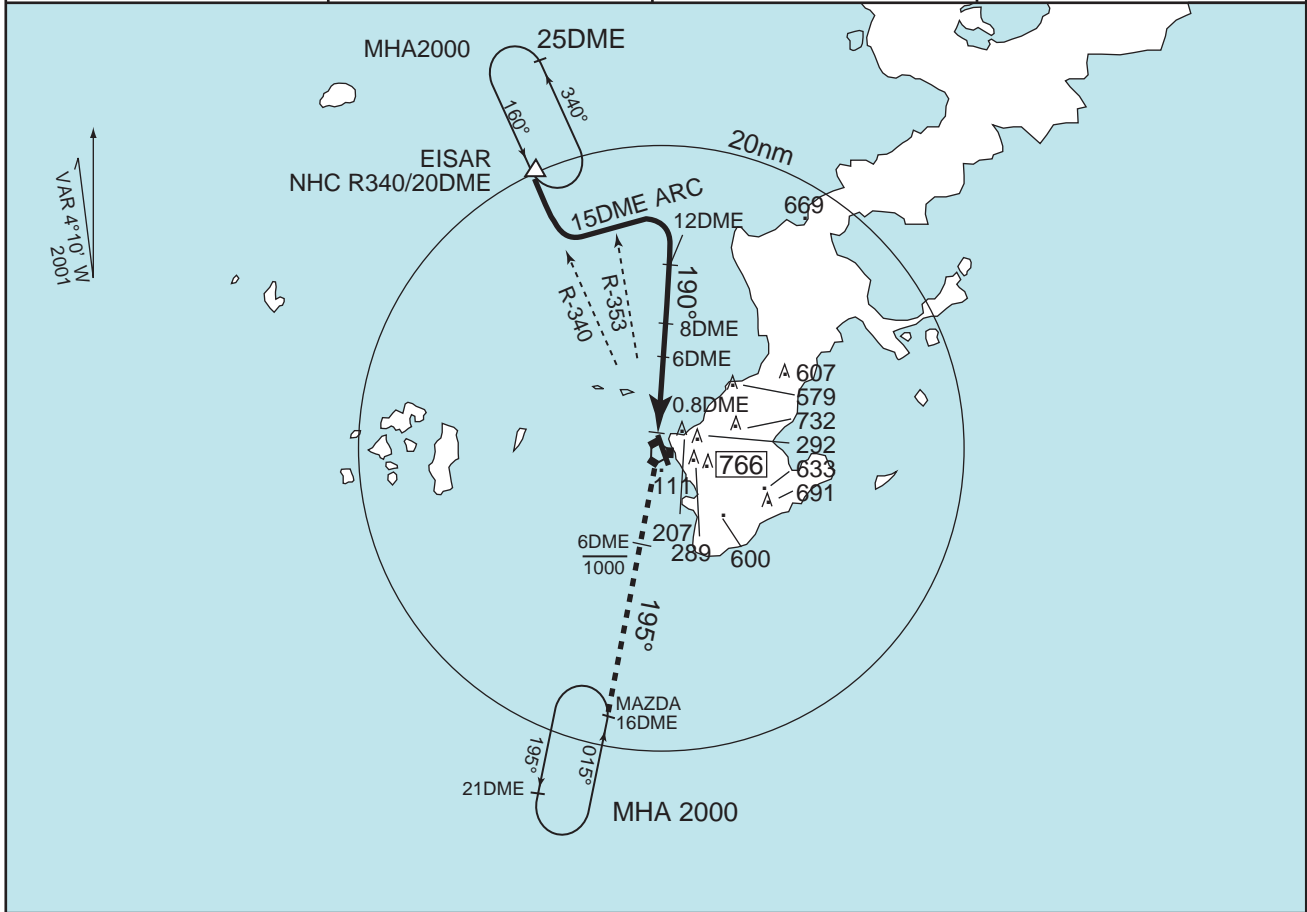
| | STA TO RWY 36 | | CIRCLING* MDA-VIS |
|---|------------------------|------------------------|----------------------|
| | RTZL & RCLL AVBL | RTZL & /or RCLL OUT | |
| A | RVR 1200m VIS 1200m | RVR 1600m VIS 1600m | 580' - 1600m |
| B | | VIS 1700m | 580' - 1700m |
| C | | VIS 2200m | 580' - 2400m |
| D | | VIS 1800m VIS 3100m | 580' - 3200m |

*Circling to West side of RWY only.

ROAH

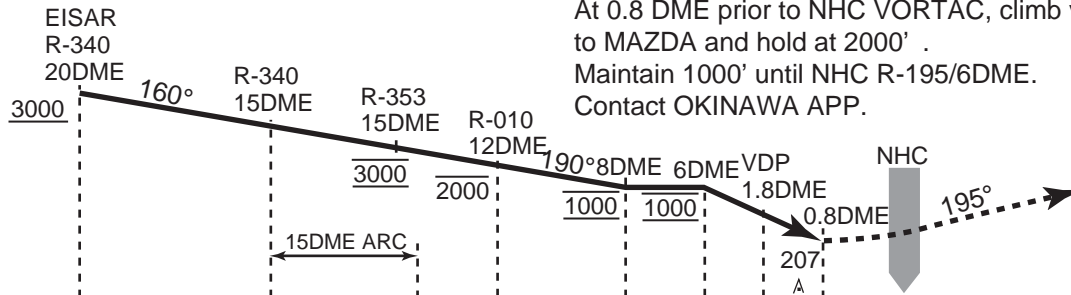
NAHA VOR/DME RWY 18

| | | | |
|---|------------------------------------|--|---------------------------------------|
| OKINAWA APP 119.1 - 335.8(N) 126.5 - 258.3(S) | NAHA VORTAC 116.5 NHC CH-112 | NAHA TOWER 118.1 - 126.2 308.6 - 236.6 | RADAR AVAILABLE ATIS 127.8 - 293.0 |
|---|------------------------------------|--|---------------------------------------|



MISSED APPROACH

At 0.8 DME prior to NHC VORTAC, climb via NHC R-195 to MAZDA and hold at 2000' .
Maintain 1000' until NHC R-195/6DME.
Contact OKINAWA APP.



MINIMA

FIELD ELEV 11ft

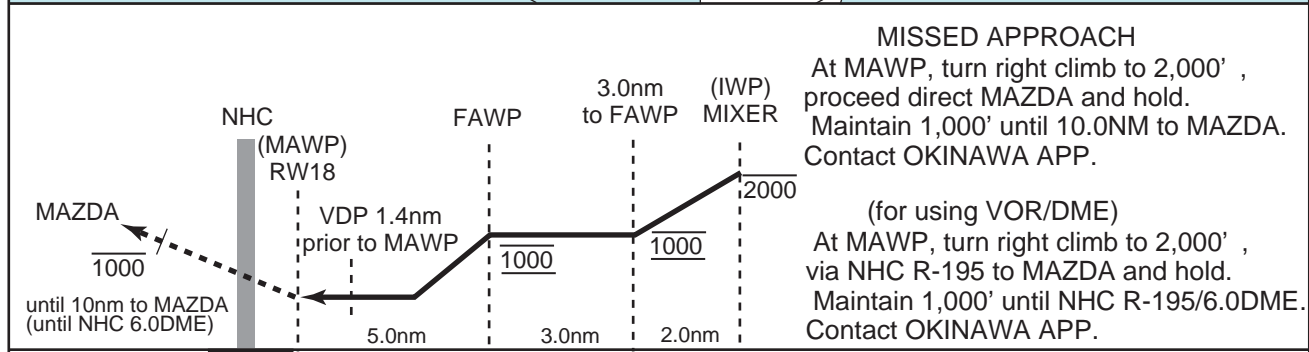
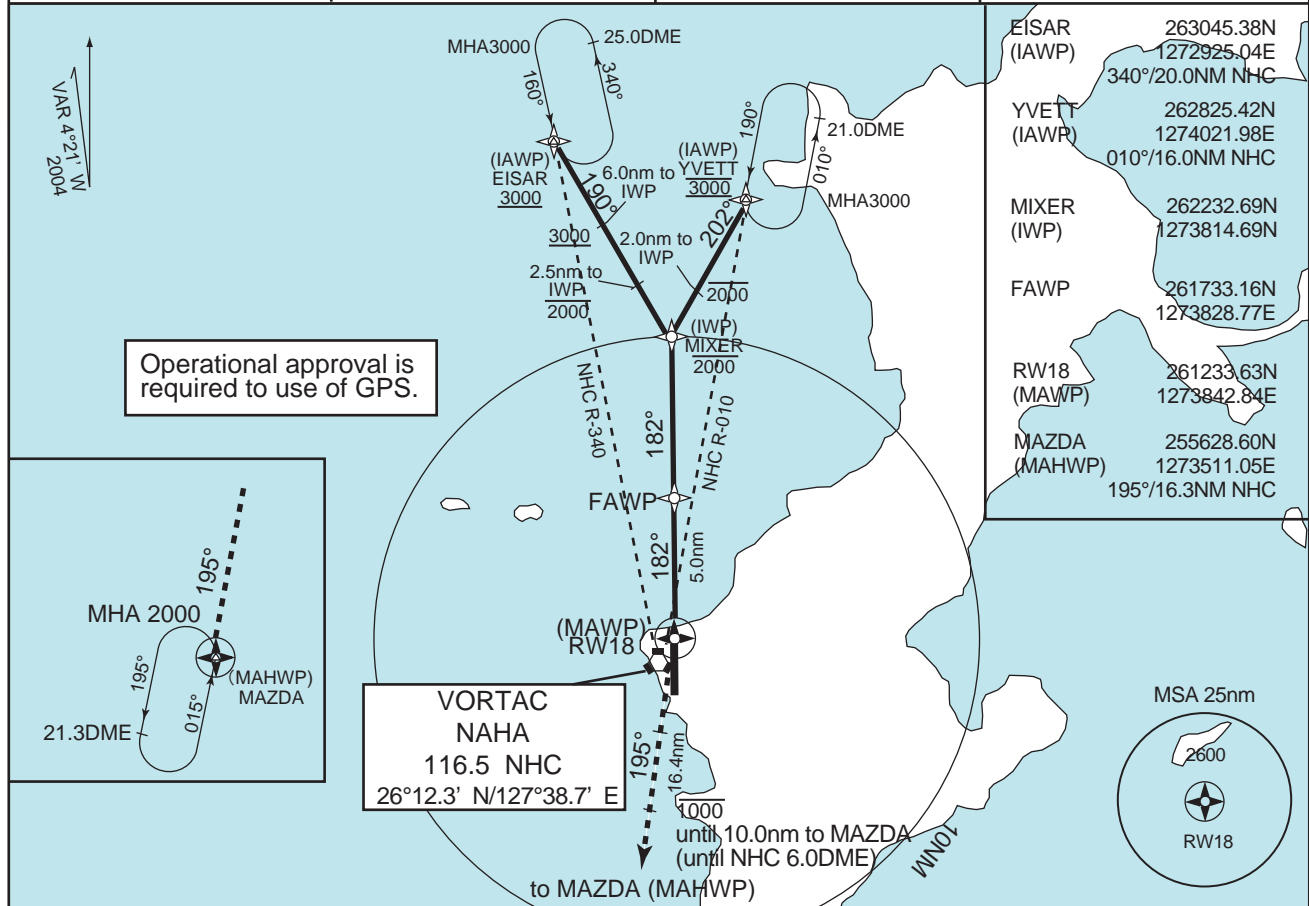
| | STA TO RWY 18 MDA 520' | CIRCLING* MDA-VIS |
|---|---------------------------|----------------------|
| A | RVR 1600m VIS 1600m | 580' - 1600m |
| B | | |
| C | VIS 2000m | 580' - 2400m |
| D | VIS 2700m | 580' - 3200m |

*Circling to West side of RWY only.

ROAH

NAHA RNAV(GPS) RWY18

| | | | |
|---|--|--|---|
| OKINAWA APP 119.1 - 335.8(N) 126.5 - 258.3(S) | 1. GPS required. 2. DME/DME not authorized. 3. RADAR service required. | NAHA TOWER 118.1 - 126.2 308.6 - 236.6 | RADAR AVAILABLE ATIS 127.8 - 293.0 |
|---|--|--|---|



MISSED APPROACH
 At MAWP, turn right climb to 2,000' , proceed direct MAZDA and hold. Maintain 1,000' until 10.0NM to MAZDA. Contact OKINAWA APP.
 (for using VOR/DME)
 At MAWP, turn right climb to 2,000' , via NHC R-195 to MAZDA and hold. Maintain 1,000' until NHC R-195/6.0DME. Contact OKINAWA APP.

| | | |
|---------------|--|----------------------------------|
| MINIMA | | FIELD ELEV 11ft THR ELEV 11ft |
|---------------|--|----------------------------------|

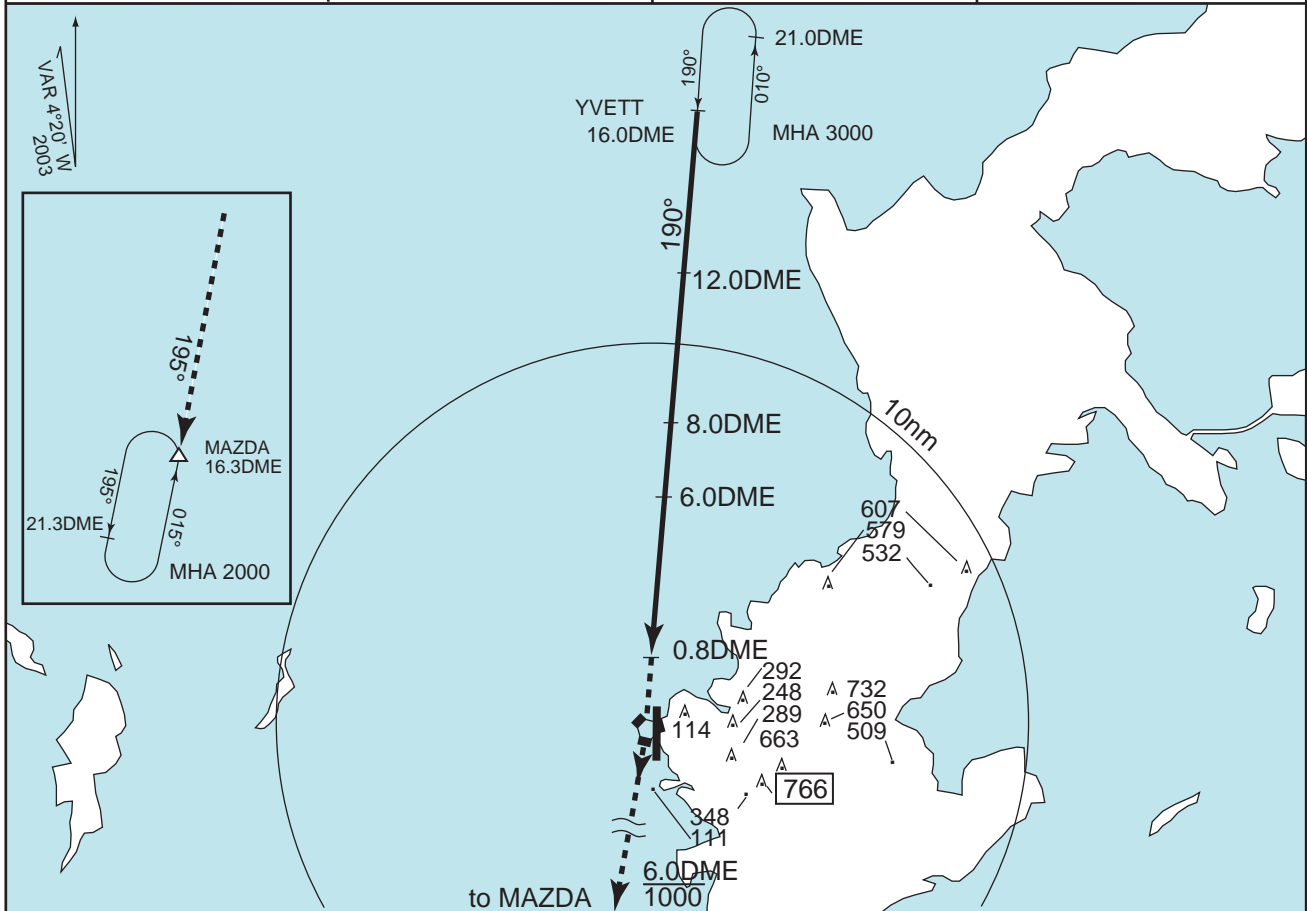
| | STA TO RWY 18 LNAV MDA 480' | CIRCLING* MDA-VIS |
|---|--------------------------------|----------------------|
| A | RVR 1600m VIS 1600m | 480' - 1600m |
| B | VIS 1800m | 480' - 2400m |
| C | VIS 2500m | 580' - 3200m |

*Circling to West side of RWY only.

ROAH

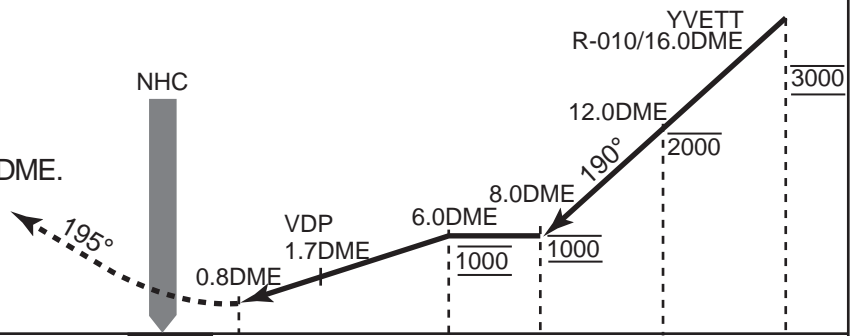
NAHA VORTAC RWY18

| | | | |
|---|--------------------------------------|--|---------------------------------------|
| OKINAWA APP 119.1 - 335.8(N) 126.5 - 258.3(S) | NAHA VORTAC 116.5 NHC CH - 112 | NAHA TOWER 118.1 - 126.2 308.6 - 236.6 | RADAR AVAILABLE ATIS 127.8 - 293.0 |
|---|--------------------------------------|--|---------------------------------------|



MISSED APPROACH

At 0.8DME prior to NHC VORTAC, climb via NHC R-195 to MAZDA and hold at 2000'. Maintain 1000' until NHC R-195/6.0DME. Contact OKINAWA APP.



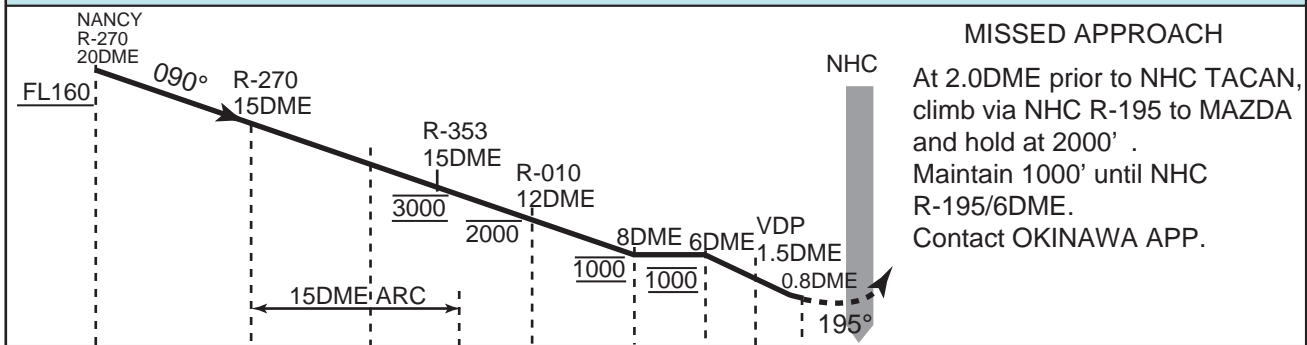
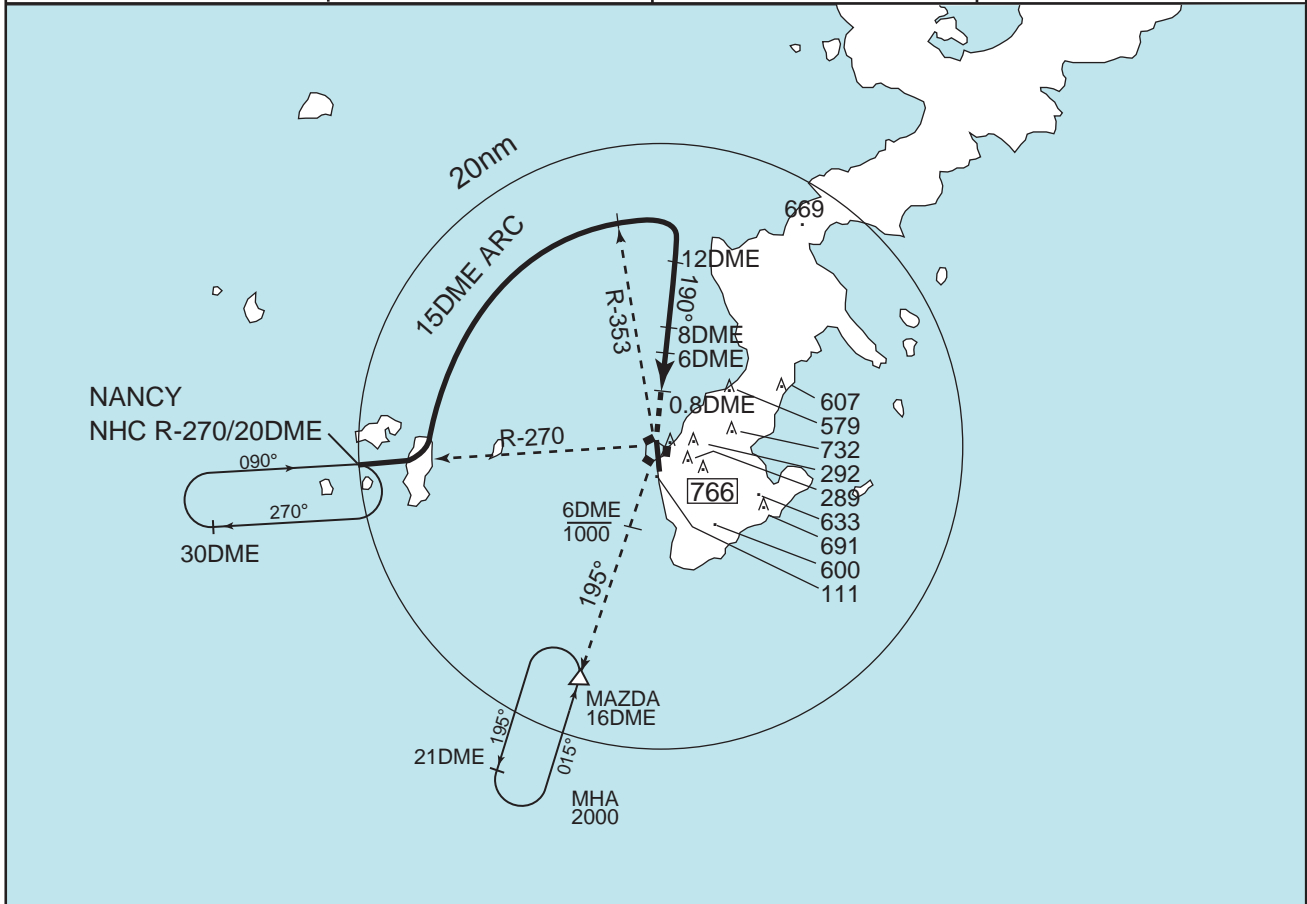
MINIMA

FIELD ELEV 11ft

| | STA TO RWY 18 LNAV MDA 480' | CIRCLING* MDA-VIS |
|---|--------------------------------|----------------------|
| A | RVR 1600m VIS 1600m | 480' - 1600m |
| B | | |
| C | VIS 1800m | 480' - 2400m |
| D | VIS 2500m | 580' - 3200m |

*Circling to West side of RWY only.

| | | | |
|---|--------------------------------------|--|---------------------------------------|
| OKINAWA APP 119.1 - 335.8(N) 126.5 - 258.3(S) | NAHA VORTAC 116.5 NHC CH - 112 | NAHA TOWER 118.1 - 126.2 308.6 - 236.6 | RADAR AVAILABLE ATIS 127.8 - 293.0 |
|---|--------------------------------------|--|---------------------------------------|



| | | |
|---------------|---------------------------|------------------------|
| MINIMA | | FIELD ELEV 11ft |
| | STA TO RWY 18 MDA 440' | CIRCLING* MDA-VIS |
| A | RVR 1600m | 480' - 1600m |
| B | VIS 1600m | 480' - 2400m |
| C | | |
| D | VIS 2200m | 580' - 3200m |

*Circling to West side of RWY only.

(For RWY18)

YVEET ARRIVAL

From over ALC VORTAC or AIKOH, proceed via ALC R-236 to TAUMU, via KXC R-055 to RABIT, then via NHC R-010 to YVETT.

Cross TAUMU at or above FL150, cross RABIT at or above 10,000 FT and cross YVETT at 3,000 FT.

EISAR ARRIVAL

From over ALC VORTAC or HACHA or CHAMP, proceed via ALC R-245 to GOYAH, via KXC R-046 to MUCRY, then via NHC R-340 to EISAR.

Cross GOYAH at or above FL150, cross MUCRY at or above 10,000 FT and cross EISAR at or above 3,000 FT.

TOPAT NORTH ARRIVAL

From over TOPAT, proceed via TIC R-101 to TIC VORTAC, via TIC R-293 to NHC VORTAC, then via NHC R-340 to EISAR

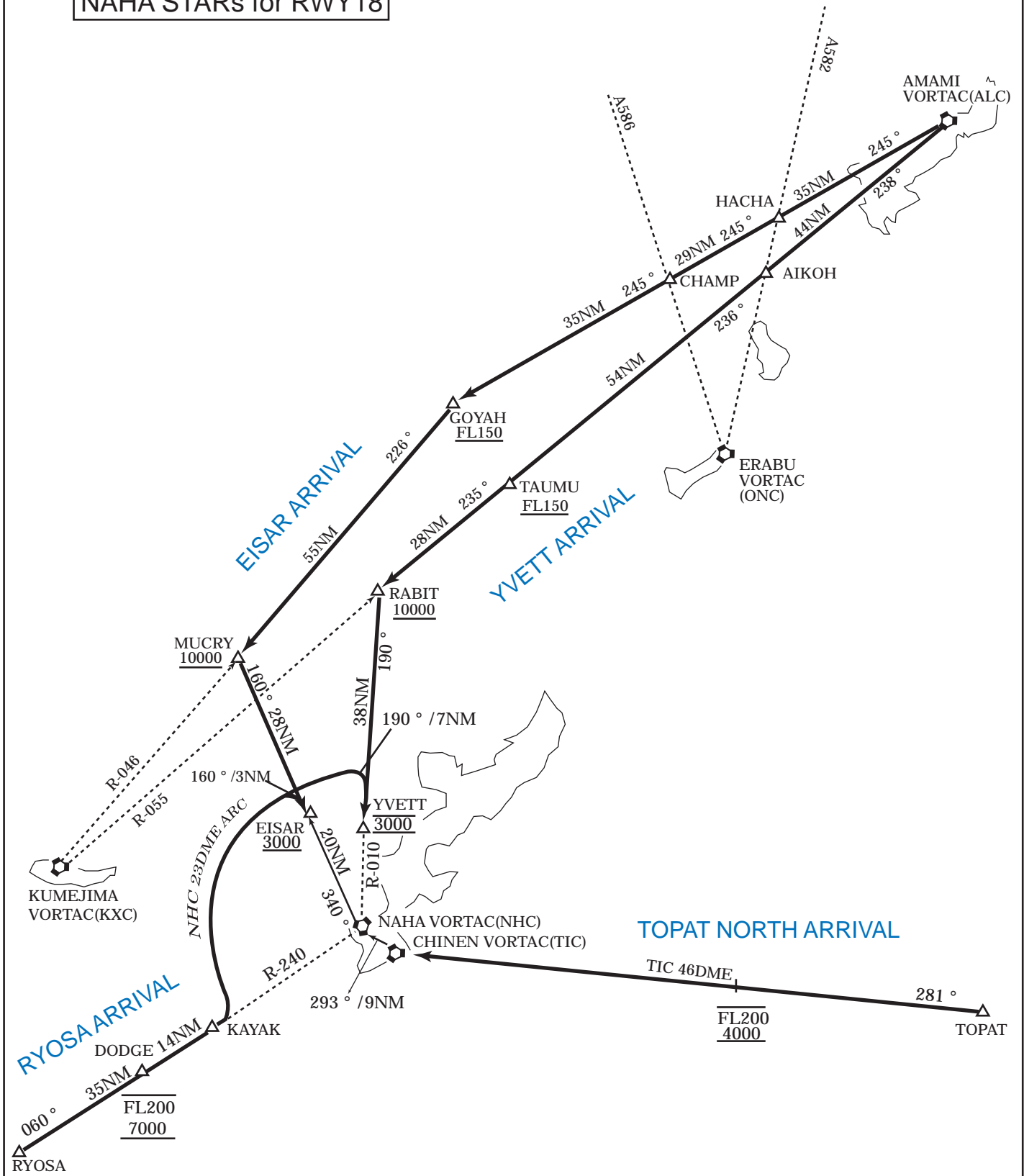
Cross TIC R-101/46DME between 4,000FT and FL200, cross EISAR at or above 3,000FT

RYOSA ARRIVAL

From over RYOSA, proceed via NHC R-240 to KAYAK, then turn left via NHC 23DME clockwise ARC to intercept and proceed via NHC R-340 to EISAR, or via NHC R-010 to WETT.

Cross DODGE between 7,000FT and FL200, cross EISAR at or above 3,000FT, or cross YVETT at 3,000FT.

NAHA STARs for RWY18



(For RWY36)

TOPAT SOUTH ARRIVAL

From over TOPAT, proceed via TIC R-101, turn left via NHC 20DME clockwise ARC to intercept and proceed via NHC R-178 to GRASE.
Cross TIC R-101/46DME between 4,000FT and FL200, cross GRASE at or above 3,000FT.

ERABU ARRIVAL

From over ONC VORTAC, proceed via ONC R-222/NHC R-042, turn left via NHC 20DME clockwise ARC to intercept and proceed via NHC R-178 to GRASE.
Cross ONC R-222/31DME at or below FL200 and cross GRASE at or above 3,000FT.

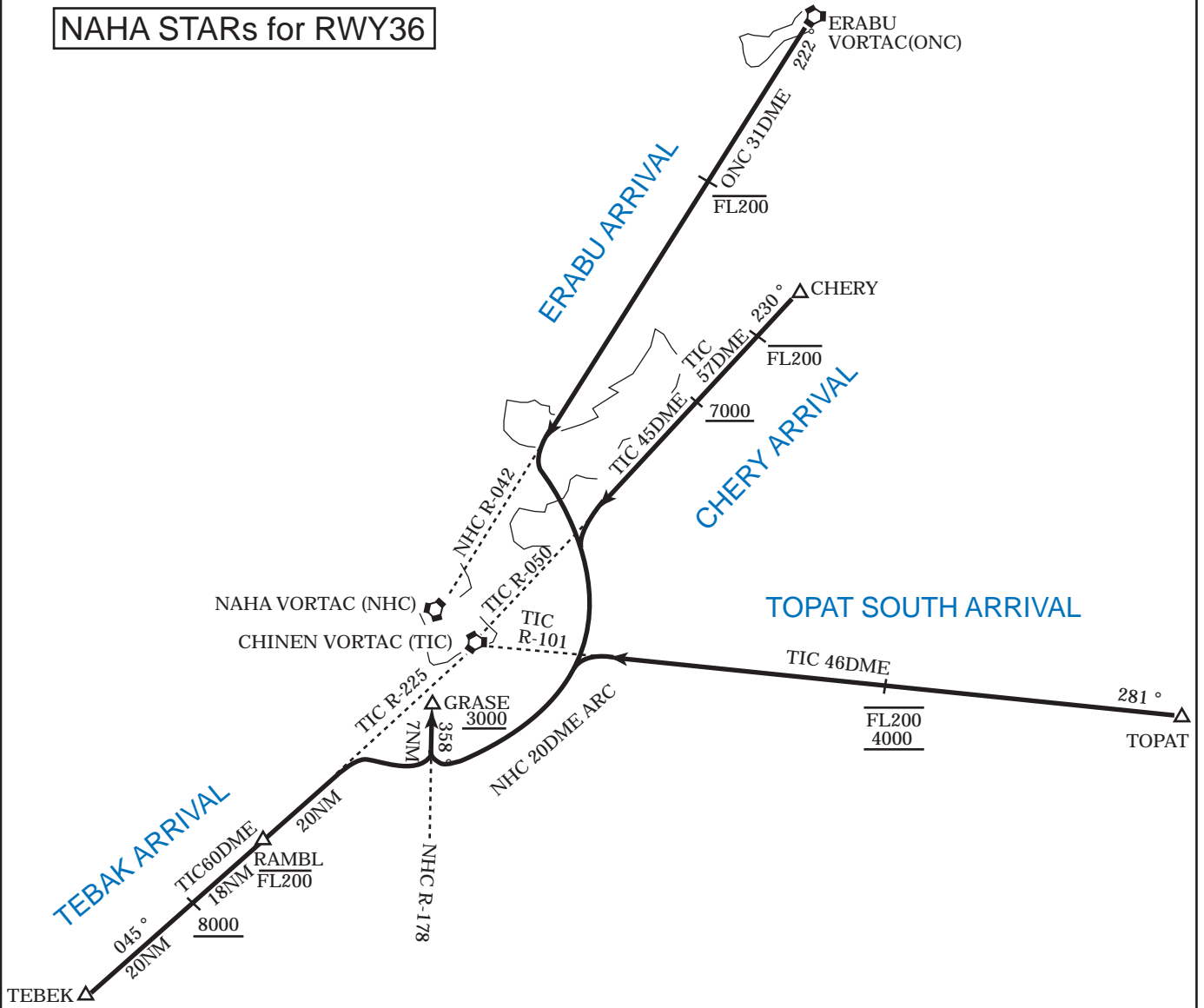
CHERY ARRIVAL

From over CHERY, proceed via TIC R-050, turn left via NHC 20DME clockwise ARC to intercept and proceed via NHC R-178 to GRASE.
Cross TIC R-050/57DME at or below FL200, cross TIC R-050/45DME at or above 7,000FT and cross GRASE at or above 3,000FT.

TEBEK ARRIVAL

From over TEBEK, proceed via TIC R-225, turn right via NHC 20DME counter-clockwise ARC to intercept and proceed via NHC R-178 to GRASE.
Cross TIC R-225/60DME at or above 8,000FT, cross RAMBL at or below FL200, cross GRASE at or above 3,000FL

NAHA STARS for RWY36



AGUNI TWO DEPARTURE

Rwy 18 : Turn right,...

Rwy 36 : Turn left,....

....Climb via NHC R-309 to KERAM.

Cross NHC R-309/15DME at 1,000FT.

DORIS FOUR DEPARTURE

Rwy 18 : Turn right HDG200 DEG,....

Rwy 36 : Climb Rwy HDG to 500FT or above, turn left HDG 190 DEG,....

....Climb to intercept and proceed via 272 DEG from OK NDB to DORIS.

Cross DORIS at or above 3,000FT.

NAHA SOUTHWEST FOUR DEPARTURE

Rwy 18 : Turn right,....

Rwy 36 : Climb Rwy HDG to 500FT or above, turn left,....

....Climb via NHC R-195 to MAZDA.

Cross NHC R-195/6DME at 1,000FT.

OKINAWA TWO DEPARTURE

Rwy 18 : Turn left, proceed direct to OK NDB.

Rwy 36 : Climb Rwy HDG to 500FT or above, turn left HDG 195 DEG to intercept and proceed via 110 DEG to OK NDB.

Maintain 1,000FT until intercepting 110 DEG to OK NDB.

CHINEN TWO DEPARTURE

Rwy 18 : Turn left, proceed direct to OK NDB,...

Rwy 36 : Climb Rwy HDG to 500FT or above, turn left HDG 195 DEG to intercept and proceed via 110 DEG to OK NDB.

Maintain 1,000FT until intercepting 110 DEG to OK NDB,...

. Turn left via TIC R-248 to TIC VORTAC.

NAHA NORTH TWO DEPARTURE

Rwy 18 : (Not established)

Rwy 36 : Climb via NHC R-340 to EISAR.

Cross NHC R-340/15DME at 1,000FT.

NAHA SOUTH REVERSAL TWO DEPARTURE

Rwy 18 : Climb via NHC R-190 until passing 2,100FT, then turn right, proceed to NHC VORTAC.

Rwy 36 : (Not established)

KUMEJIMA THREE DEPARTURE

RWY18 : Turn right climb via NHC R-195 to intercept and proceed via NHC 14DME clockwise ARC to intercept and proceed via NHC R-265 to DORIS.

Maintain 1,000FT until NHC R-195/6DME....

Rwr36 : Turn Left climb via NHC R-320 to intercept and proceed via NHC 14DME counterclockwise ARC to intercept and proceed via NHC R-265 to DORIS.

Maintain 1,000FT until NHC R-320/11DME....

.Cross NHC R-265/16DME at 2,000FT, cross DORIS at or above 3,000FT.

CHURA ONE DEPARTURE

RWY18 : (Not established)

RWY36 : Turn left, climb via NHC R-320 to intercept and proceed via NHC 14DME counterclockwise ARC. ...

to intercept and proceed via NHC R-240 to ELIEE.

to intercept and proceed via NHC R-195 to MAZDA

. to join AVLAS TRANSITION.

.. to join TOPATTRANSITION.

.... to intercept and proceed via TIC R-050 to ANMAR

Maintain 1,000FT until NHC R-320/11DME, maintain 2,000Fr until ELIEE or crossing NHC R-240.

CONEY ONE DEPARTURE

RWY18 : Climb via NHC R-180 to intercept and proceed via NHC 20DME counterclockwise ARC. . . .

. to join AVLAS TRANSITION.

to join TOPAT TRANSITION.

.... to intercept and proceed via TIC R-050 to NABEE.

Maintain 2,000FT until NHC R-180/12DME.

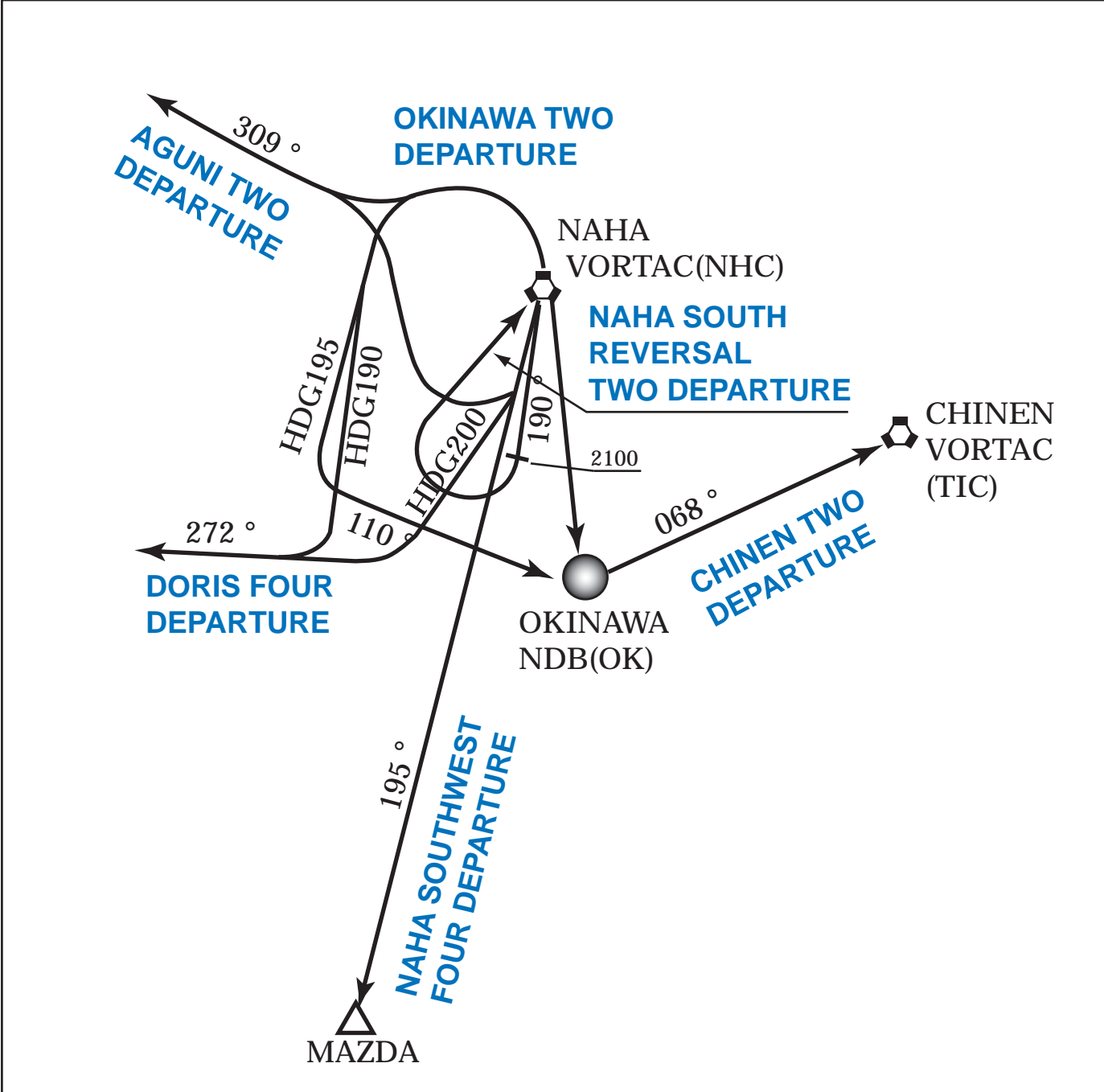
For PACIFIC TRANSITION

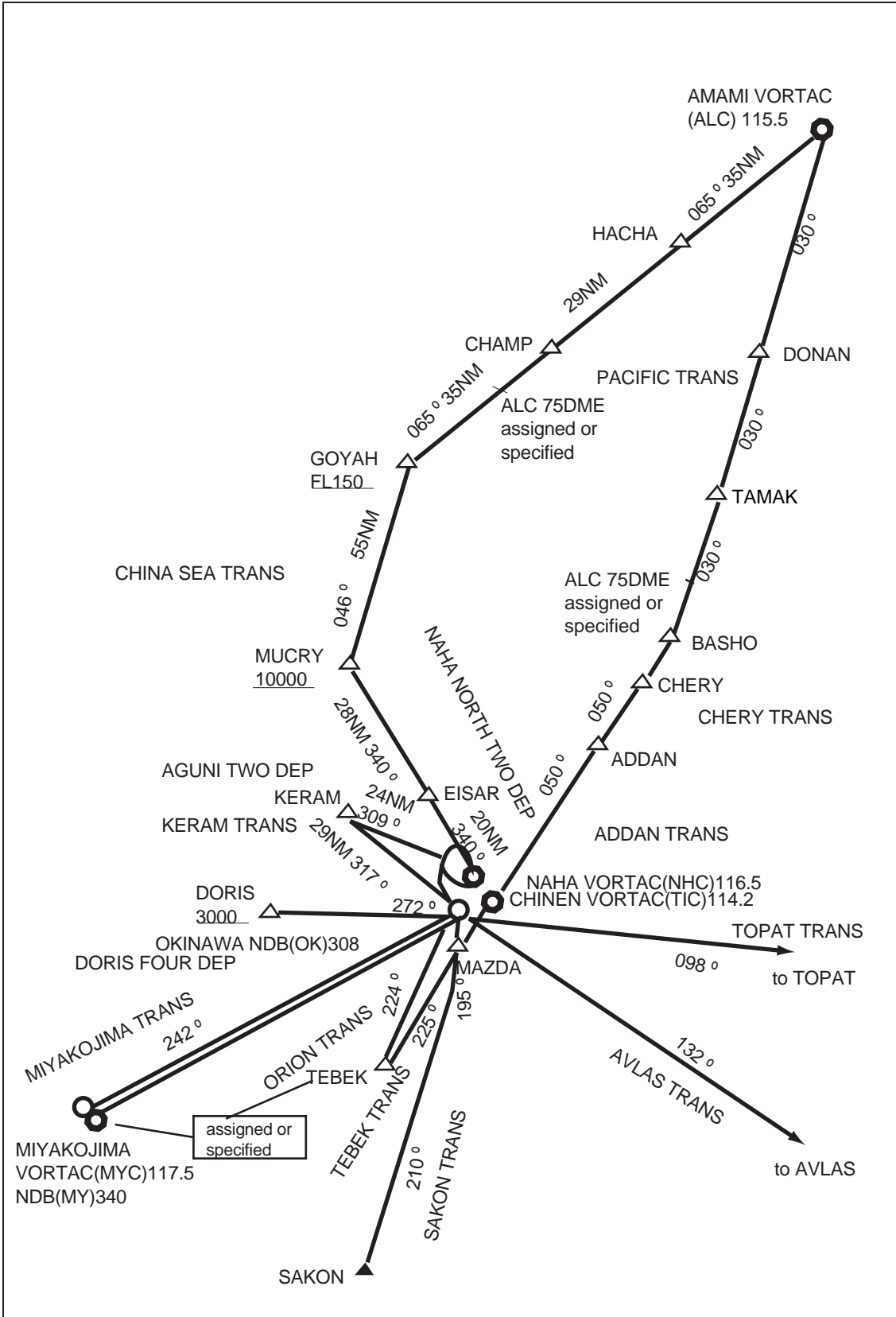
Cross NHC R-110 between 12,000FT and FL150, cross NABEE at or above FL150.

For ADDAN TRANSITION, CHERY TRANSITION

Cross NHC R-110 at assigned or specified altitude.

RWY36 : (Not established)





AGUNI TWO VESSEL DEPARTURE

RWY18 : (Not established)

RWY36 : Turn left, climb via NHC R-309 to KERAM.

Cross NHC R-300/15DME at 1,000FT.

Note : Following climb gradient should be maintained until 500FT.

| | | | | | | |
|-----------------|-----|-----|-----|------|------|------|
| Speed (Knots) | 60 | 90 | 120 | 1 50 | 1 80 | 210 |
| Rate (Feet/Min) | 300 | 450 | 600 | 750 | 900 | 1050 |

DORIS FOUR VESSEL DEPARTURE

RWY18 : (Not established)

RWY36 : Climb Rwr HDG to 500FT or above, turn left HDG 190 DEG to intercept and proceed via 272 DEG from OK NDB to DORIS.

Cross DORIS at or above 3,000FT.

Note : Following climb gradient should be maintained until 500FT.

| | | | | | | |
|-----------------|-----|-----|-----|------|------|------|
| Speed (Knots) | 60 | 90 | 120 | 1 50 | 1 80 | 210 |
| Rate (Feet/Min) | 300 | 450 | 600 | 7 50 | 900 | 1050 |

NAHA SOUTHWEST FOUR VESSEL DEPARTURE

RWY18 : (Not established)

RWY36 : Climb RWY HDG to 500FT or above, turn left, climb via NHC R-195 to MAZDA

Cross NHC R-195/6DME at 1,000FT.

Note : Following climb gradient should be maintained until 500FT.

| | | | | | | |
|-----------------|-----|-----|-----|------|------|------|
| Speed (Knots) | 60 | 90 | 120 | 1 50 | 1 80 | 210 |
| Rate (Feet/Min) | 300 | 450 | 600 | 750 | 900 | 1050 |

OKINAWA TWO VESSEL DEPARTURE

RWY18 : (Not established)

RWY36 : Climb RWY HDG to 500FT or above, turn left HDG 195 DEG to intercept and proceed via 110 DEG to OK NDB.

Maintain 1,000Fr until intercepting 110 DEG to OK NDB.

Note : Following climb gradient should be maintained until 500FT.

| | | | | | | |
|-----------------|-----|-----|-----|-----|------|------|
| Speed (Knots) | 60 | 90 | 120 | 150 | 1 80 | 210 |
| Rate (Feet/Min) | 300 | 450 | 600 | 750 | 900 | 1050 |

CHINEN TWO VESSEL DEPARTURE

RWY18 : (Not established)

RWY36 : Climb RWY HDG to 500FT or above, turn left HDG 195 DEG to intercept and proceed via 110 DEG to OK NDB, then turn left via TIC R-248 to TIC VORTAC.

Maintain 1,000FT until intercepting 110 DEG to OK NDB.

Note : Following climb gradient should be maintained until 500FL

| | | | | | | |
|-----------------|-----|-----|-----|-----|------|------|
| Speed (Knots) | 60 | 90 | 120 | 150 | 1 80 | 2 10 |
| Rate (Feet/Min) | 300 | 450 | 600 | 750 | 900 | 1050 |

NAHA NORTH TWO VESSEL DEPARTURE

RWY18 : (Not established)

RWY36 : Climb via NHC R-340 to EISAR

Cross NHC R-340/15DME at 1,000FT.

Note : Following climb gradient should be maintained until 500FT.

| | | | | | | |
|------------------|-----|-----|-----|-----|------|------|
| Speed (Knots) | 60 | 90 | 120 | 150 | 1 80 | 2 10 |
| Rate (Feet/.Min) | 300 | 450 | 600 | 750 | 900 | 1050 |

KUMEJMA THREE VESSEL DEPARTURE

RWY18 : (Not established)

RWY36 : Turn left climb via NHC R-320 to intercept and proceed via NHC 14DME counterclockwise ARC to intercept and proceed via NHC R-265 to DORIS.

Maintain 1,000FT until NHC R-320/11DME, cross NHC R-265/16DME at 2,000FT, and cross DORIS at or above 3,000FT.

Note : Following climb gradient should be maintained until 500FT.

| | | | | | | |
|-----------------|-----|-----|-----|------|------|------|
| Speed (Knots) | 60 | 90 | 120 | 150 | 1 80 | 2 10 |
| Rate (Feet/Min) | 300 | 450 | 600 | 7 50 | 900 | 1050 |

CHURA ONE VESSEL DEPARTURE

RWY18 : (Not established)

RWY36 : Turn left, climb via NHC R-320 to intercept and proceed via NHC 14DME

counterclockwise ARC. . .

.to intercept and proceed via NHC R-240 to ELIEE.

.to intercept and proceed via NHC R-195 to MAZDA.

.to join AVLAS TRANSITION.

.to join TOPAT TRANSITION.

....to intercept and proceed via TIC R-050 to ANMAR. Maintain 1,000FT until

NHC R-320/11DME, maintain 2,000FT until ELIEE or crossing NHC R-240.

Note : Following climb gradient should be maintained until 500FT.

| | | | | | | |
|-----------------|-----|-----|-----|-----|-----|------|
| Speed (Knots) | 60 | 90 | 120 | 150 | 180 | 210 |
| Rate (Feet/Min) | 300 | 450 | 600 | 750 | 900 | 1050 |

TEBEK TRANSITION

From over MAZDA, proceed via TIC R-225 to TEBEC

Cross TEBEK at assigned or specified altitude.

SAKON TRANSITION

From over MAZDA, proceed via NHC R-195 to intercept and proceed via TIC R-210 to SAKON.

TOPAT TRANSITION

From over OK NDB, proceed via 098 DEG from OK NDB to TOPAT.

AVLAS TRANSITION

from over OK NDB, proceed via 132 DEG from OK NDB to AVLVS.

MIYAKOJIMA TRANSITION

from over OK NDB, proceed via 242 DEG from OK NDB to MYC VORTAC (MY NDB) .

Cross MYC VORTAC (MY NDB) at assigned or specified altitude.

KERAM TRANSITION

From over OK NDB, proceed via 317 DEG from OK NDB to KERAM.

ORION TRANSITION

From over OK NDB, proceed via 224 DEG from OK NDB to TEBEK

Cross TEBEK at assigned or specified altitude.

ADDAN TRANSITION

From over TIC VORTAC or ANMAR or NABEE, proceed via TIC R-050 to ADDAN.

CHERY TRANSITION

From over TIC VORTAC or ANMAR or NABEE, proceed via TIC R-050 to CHERY.

PACIFIC TRANSITION

From over TIC VORTAC or NABEE, proceed via TIC R-050 to BASHO, then turn left via ALC R-210 to TAMAK, DONAN or ALC VORTAC.

Cross ALC R-210/75DME at assigned or specified altitude.

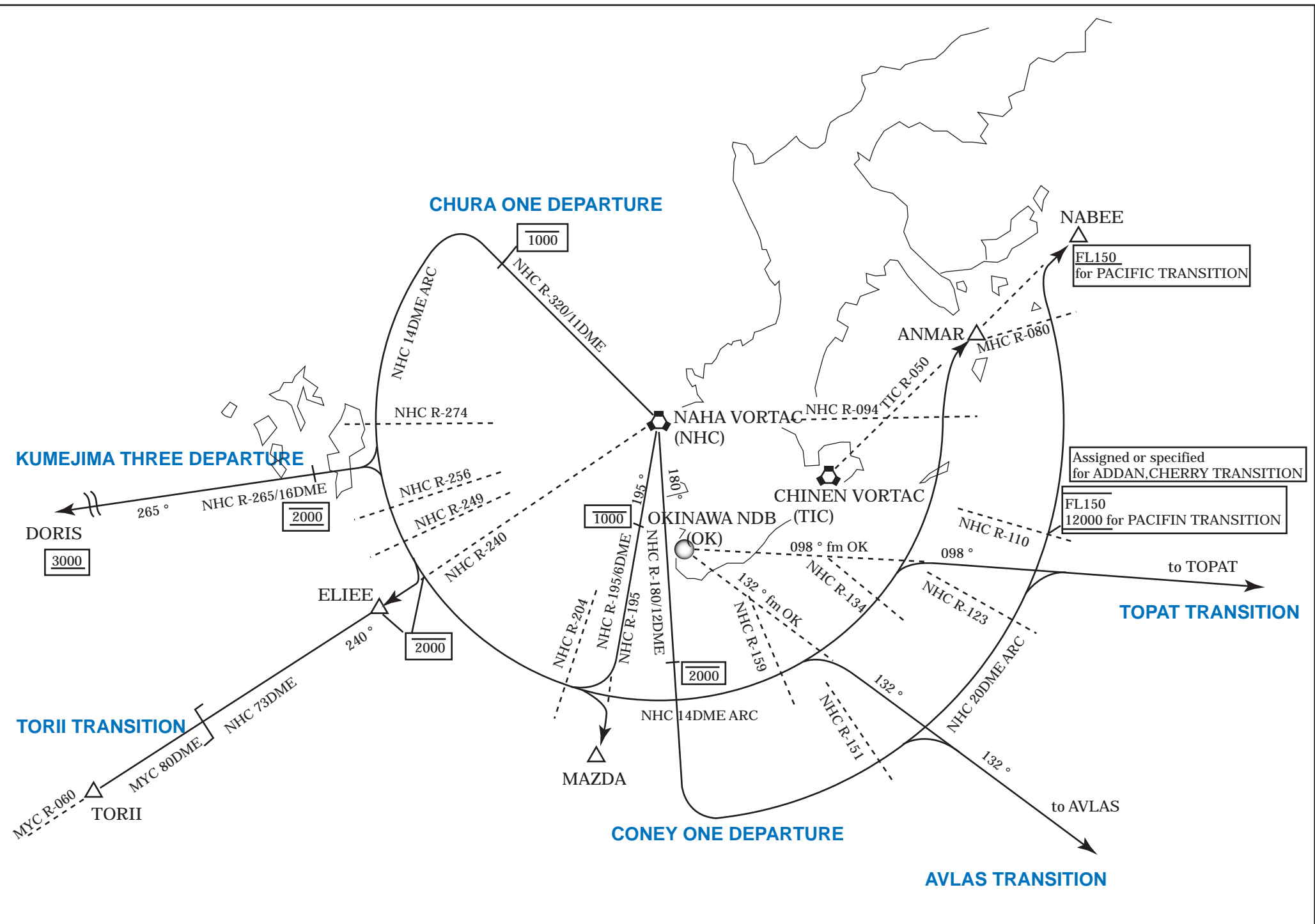
CHINA SEA TRANSITION

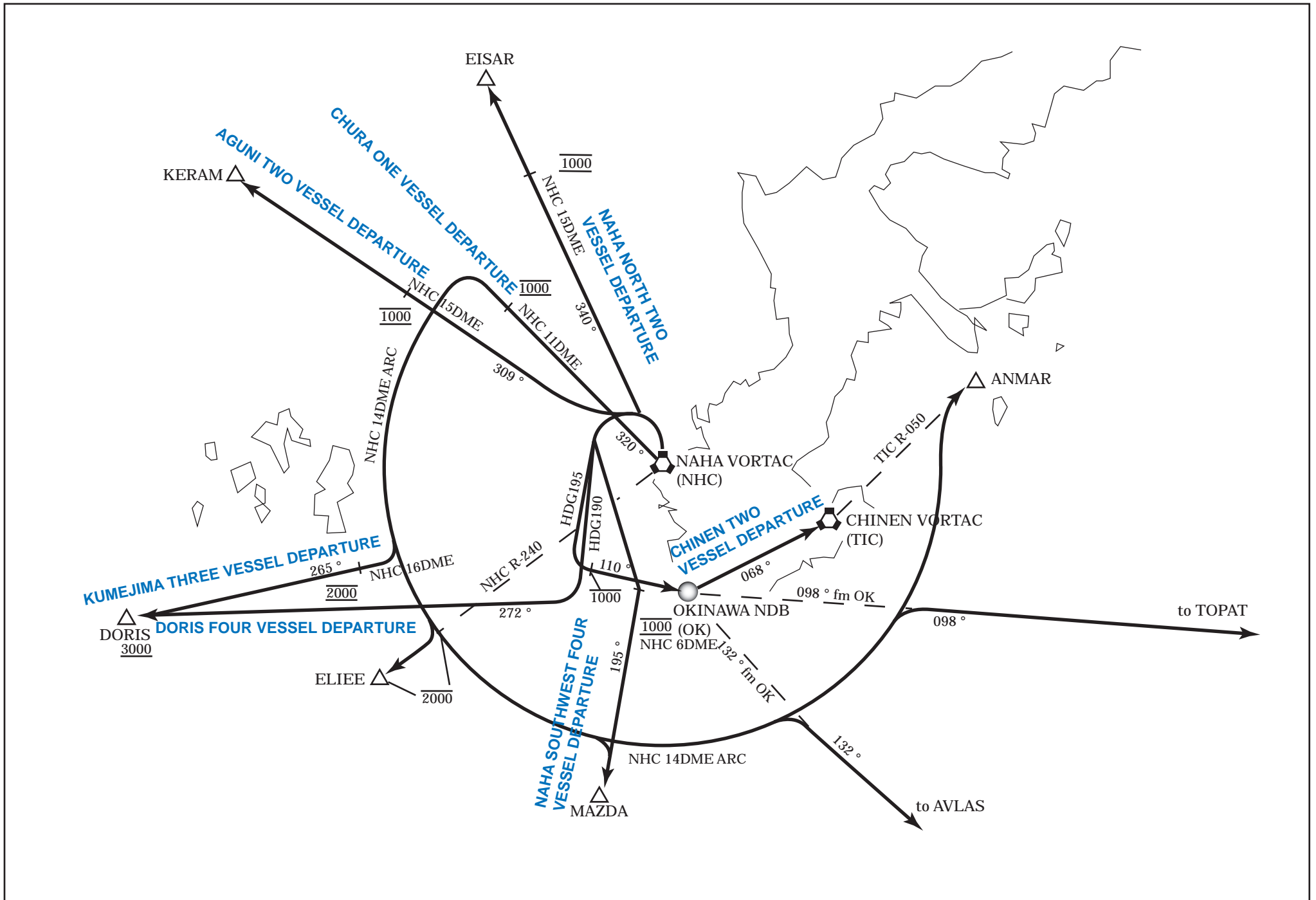
From over EISAR, proceed via NHC R-340 to MUCRY, via KXC R-046 to GOYAH, then via ALC R-245 to CHAMP, HACHA or ALC VORTAC.

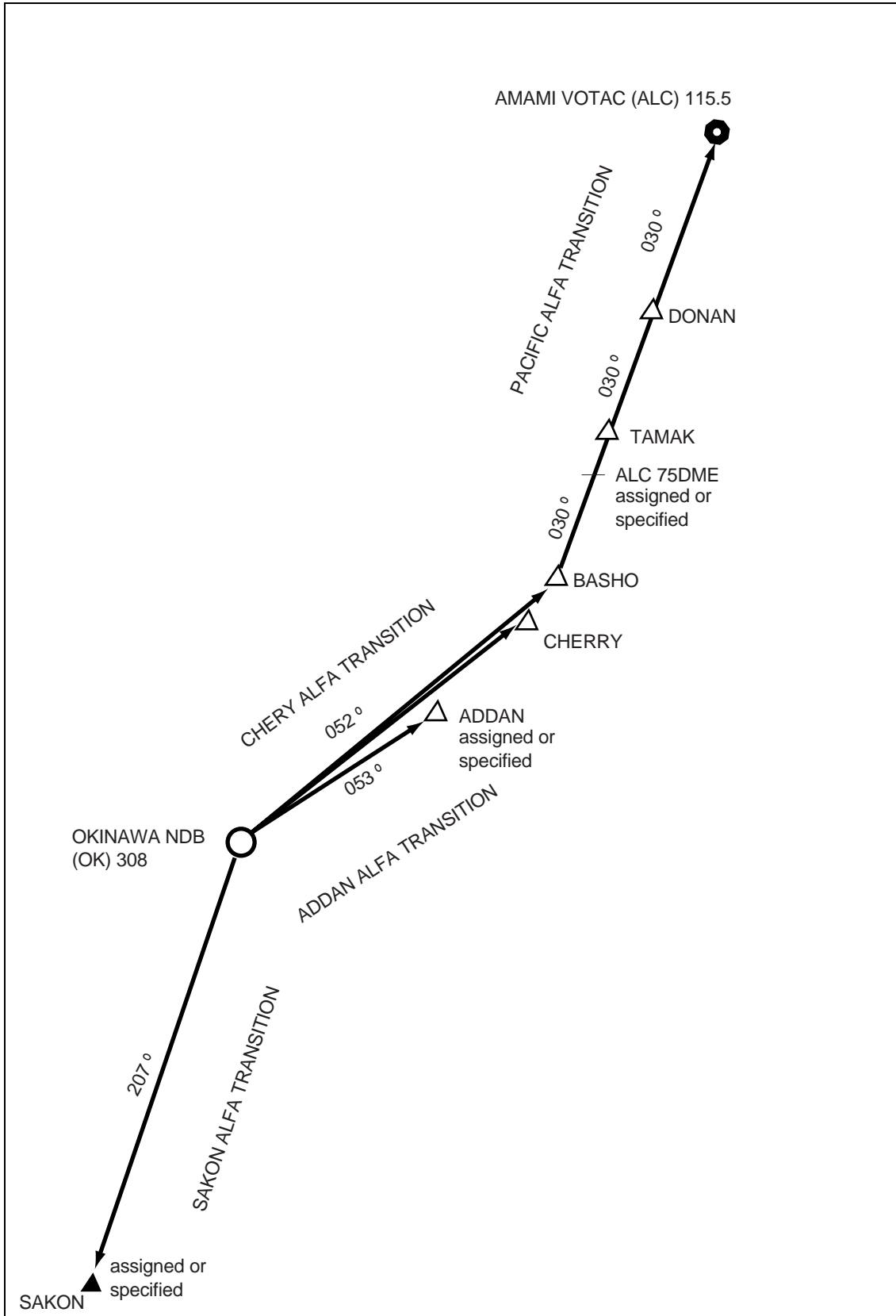
Cross MURCY at or above 10,000 FT, cross GOYAH at or above FL150 and cross ALC R-245/75DME at assigned or specified altitude.

TORII TRANSITION

From over ELIEE, proceed via NHC R-240 to NHC 73DME, then via MYC R-060 to TORII.







Alternate transitions in case of outage of Naha and/or Chinen VORTAC

PACIFIC ALFA TRANSITION

From over OK NDB, proceed via 052DEG from OK NDB to BASHO, then turn left via ALC R-210 to TAMEK, DONAN or ALC VORTAC.

Cross ALC R-210/75DME at assigned or specified altitude.

CHERY ALFA TRANSITION

From over OK NDB, proceed via 052DEG from OK NDB to CHERY.

ADDAN ALFA TRANSITION

From over OK NDB, proceed via 053DEG from OK NDB to ADDAN.

Cross ADDAN at assigned or specified altitude.

SAKON ALFA TRANSITION

From over OK NDB, proceed via 207DEG from OK NDB to SAKON.

Cross SAKON at assigned or specified altitude.