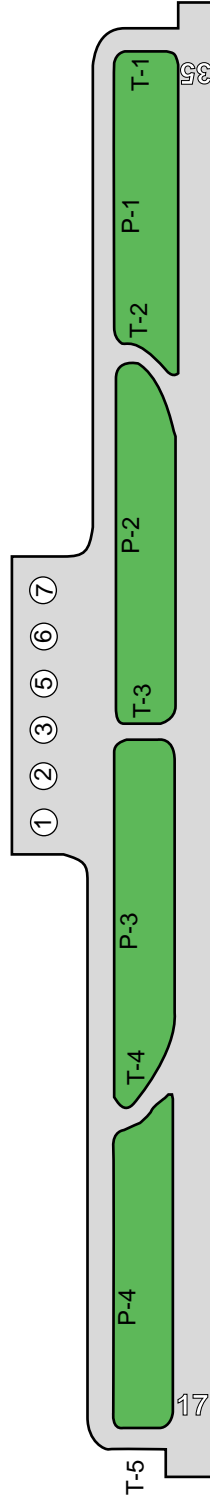


SHIMOJISHIMA AIRPORT



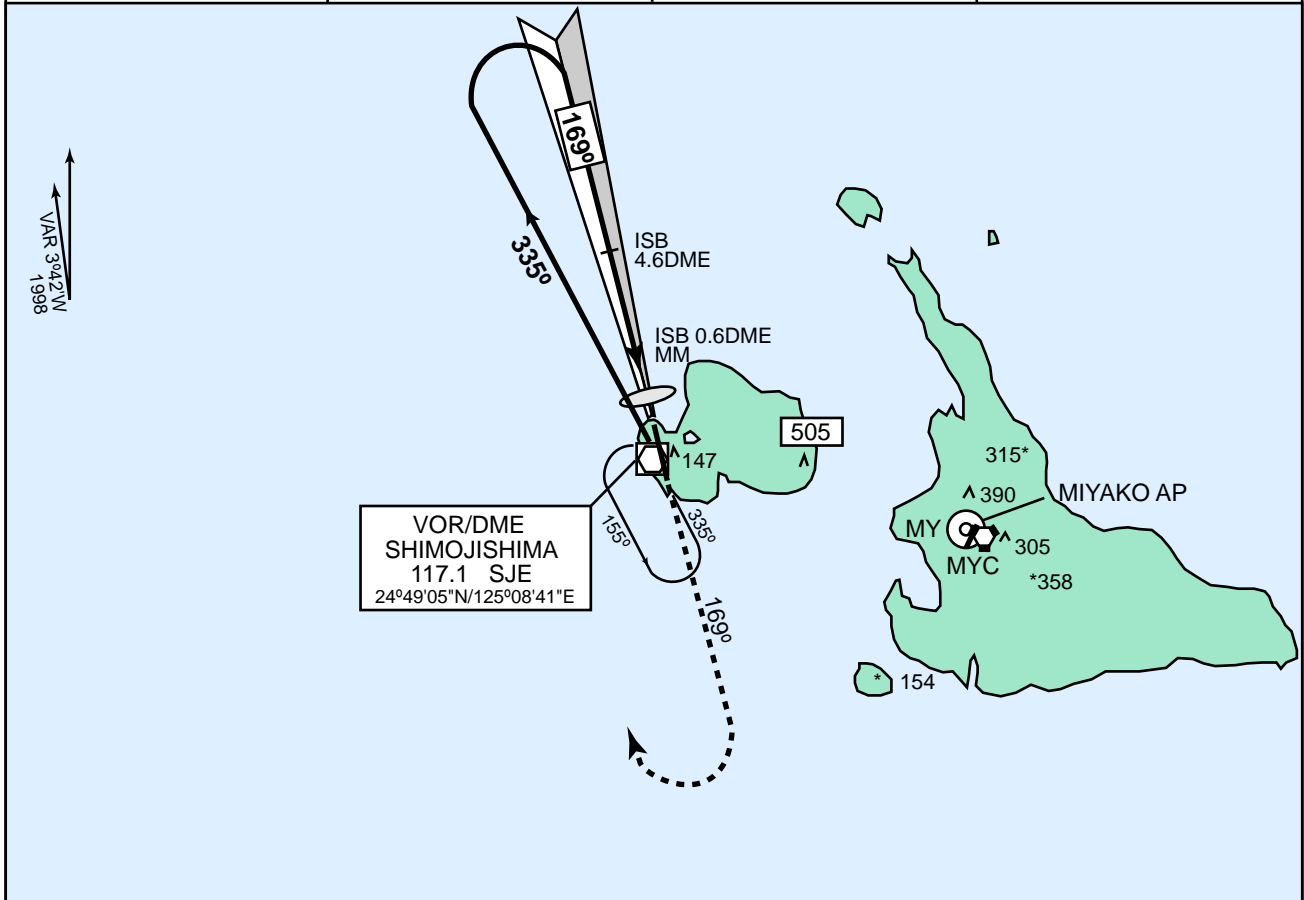
VOR/DME (S/E)

RUNWAY GROOVING 3000m x 40m
 WIDTH OF TAXIWAY 30m

RORS

SHIMOJISHIMA VOR/DME/ILS RWY 17

SHIMOJI APP 120.3 - 121.2 - 125.0	ILS - LLZ 111.5 ISB ∴∴ ILS - GP 332.9 ILS - DME CH - 52	SHIMOJI TOWER 118.3 - 126.2 - 121.7	RADAR AVAILABLE
--------------------------------------	--	--	-----------------



ILS REFERENCE DATUM 54'

Remain within SJE 14DME

MISSED APPROACH
At DA, climb to 2000' via SJE R-169, then turn right, proceed to SJE VOR/DME within SJE 10DME and hold.
Contact SHIMOJI APP.

MINIMA		FIELD ELEV 25ft TDZ ELEV 15ft									
STA TO RWY 17					CIRCLING*	MDA-VIS					
DA 215'		MDA 320'									
FULL ILS		RTZL & RCLL AVBL		RTZL &/or RCLL OUT		PALS OUT		GP OUT		GP&PALS OUT	
A											380' - 1600m
B	RVR 550m	RVR 800m	RVR 1200m	RVR 1200m	RVR 1200m	RVR 1400m	VIS 1400m				480' - 1600m
C	VIS 800m	VIS 800m	VIS 1200m	VIS 1200m	VIS 1200m						480' - 2400m
D					RVR 1600m		VIS 1600m				580' - 3200m

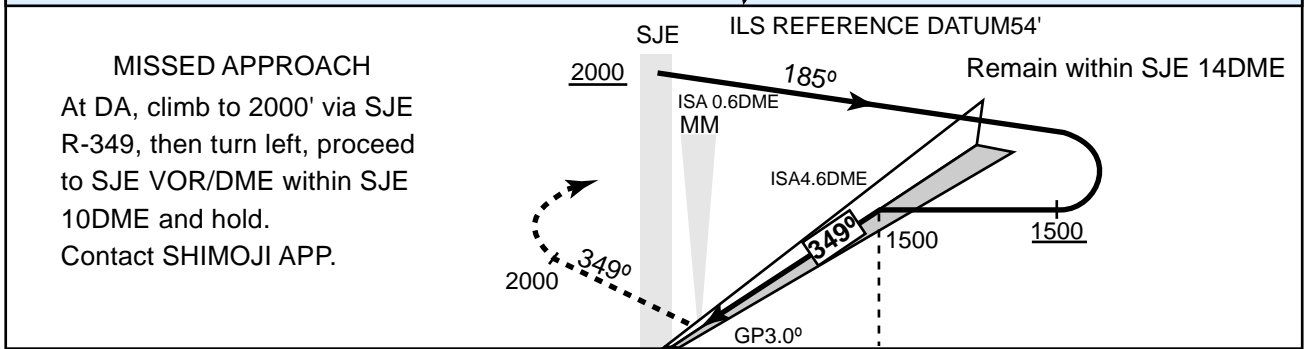
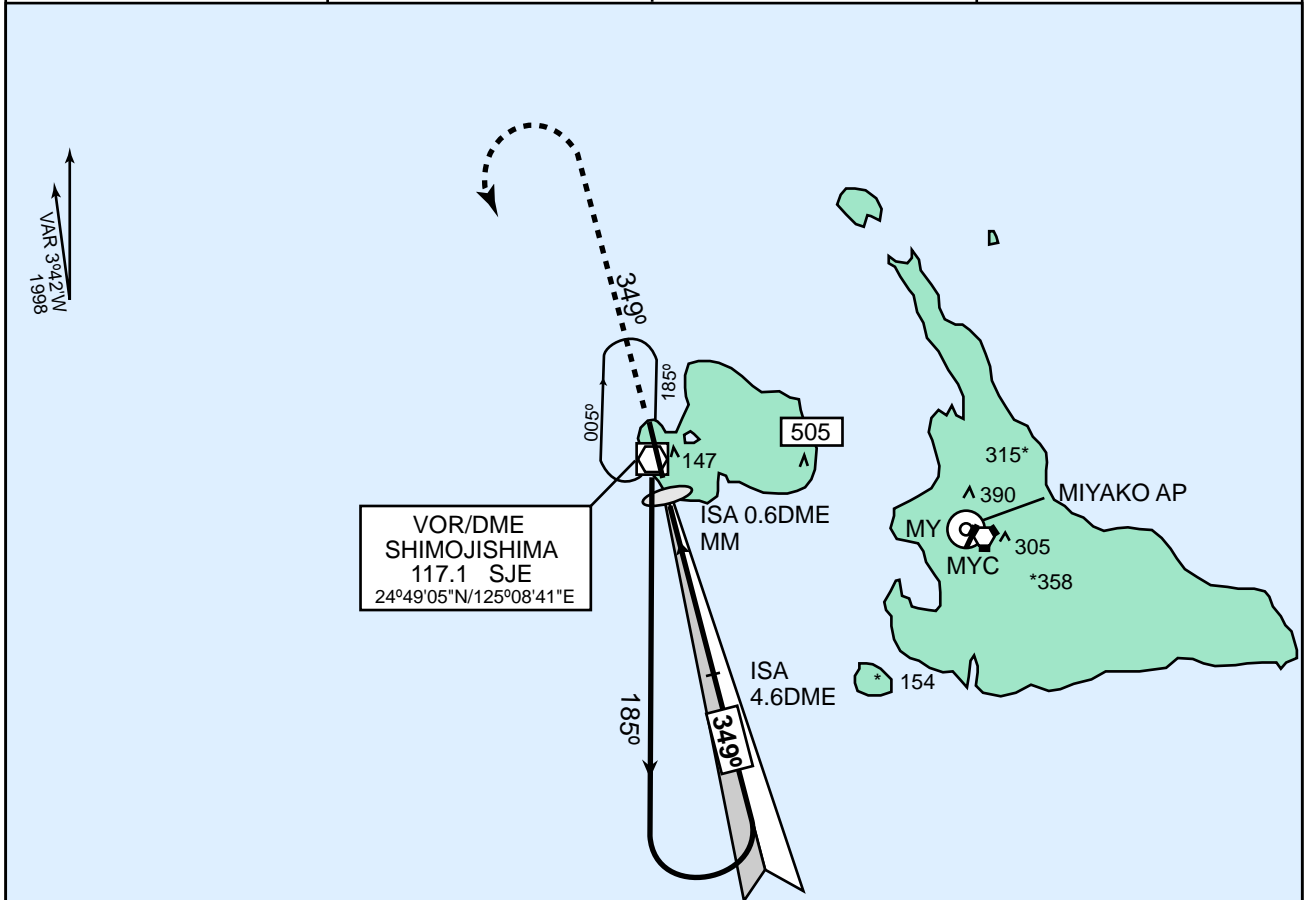
*Circling to West side of RWY only

(EFF : 20 APR 2000)

RORS

SHIMOJISHIMA VOR/DME/ILS RWY 35

SHIMOJI APP 120.3 - 121.2 - 125.0	ILS - LLZ 110.9 ISA ∴ ILS - GP 330.8 ILS - DME CH - 46	SHIMOJI TOWER 118.3 - 126.2 - 121.7	RADAR AVAILABLE
--------------------------------------	---	--	-----------------

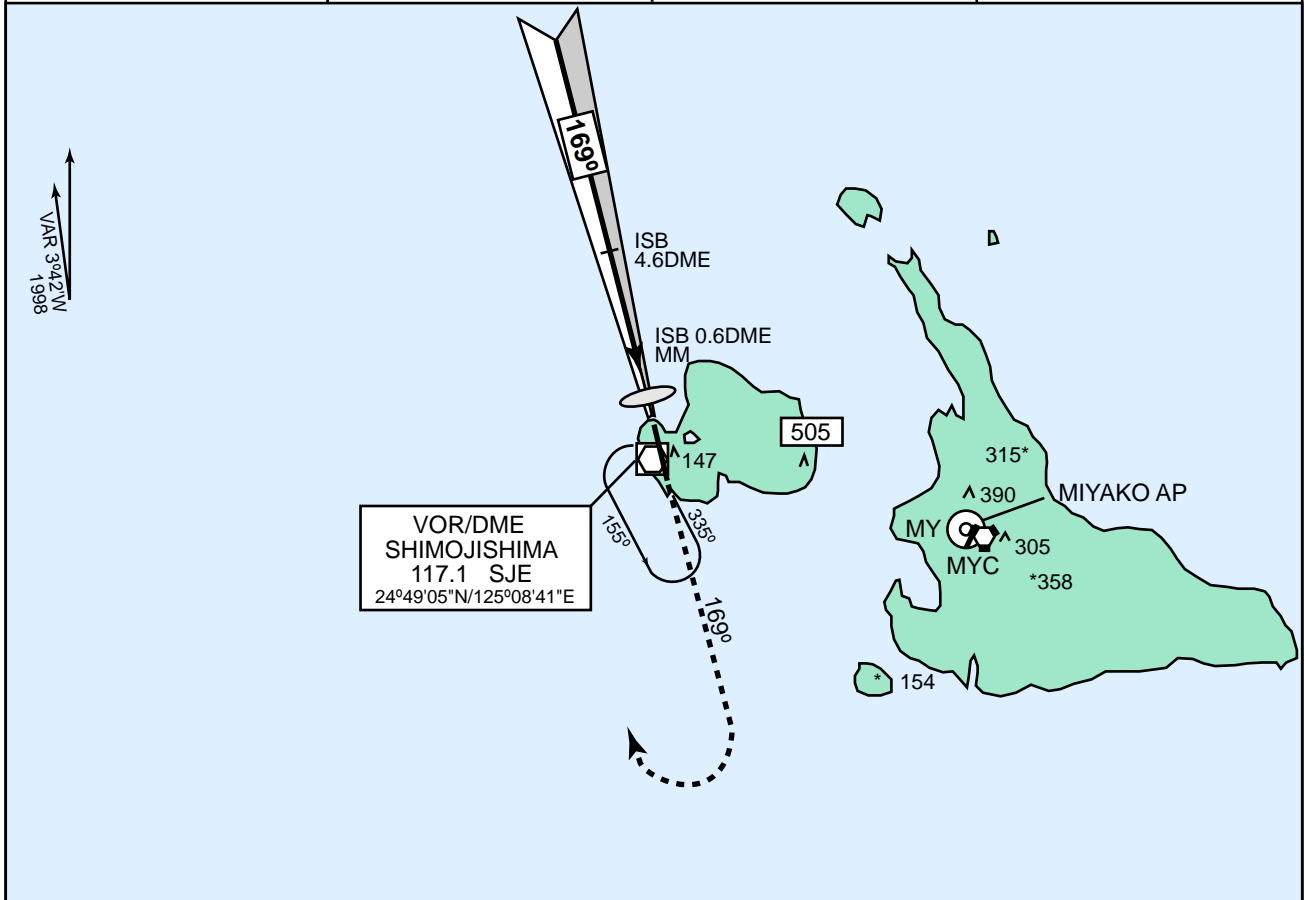


MINIMA			FIELD ELEV 25ft TDZ ELEV 54ft		
STA TO RWY 35					CIRCLING*
ILS DA 254'			(GP OUT) MDA 360'		
RTZL & RCLL AVBL	RTZL &/or RCLL OUT	PALS OUT	PALS AVBL	PALS OUT	MDA-VIS
A					380' - 1600m
B	RVR 550m	RVR 800m	RVR 1200m	RVR 1400m	480' - 1600m
C	VIS 800m	VIS 800m	VIS 1200m	VIS 1400m	480' - 2400m
D				RVR 1600m VIS 1600m	580' - 3200m

*Circling to West side of RWY only

(EFF : 20 APR 2000)

SHIMOJI APP 120.3 - 121.2 - 125.0	ILS - LLZ 111.5 ISB ∴∴ ILS - GP SJE 332.9 ILS - DME CH - 52	SHIMOJI TOWER 118.3 - 126.2 - 121.7	RADAR AVAILABLE
--------------------------------------	--	--	-----------------



ILS REFERENCE DATUM 54'

Remain within SJE 14DME

MISSED APPROACH
At DA, climb to 2000' via SJE R-169, then turn right, proceed to SJE VOR/DME within SJE 10DME and hold.
Contact SHIMOJI APP.

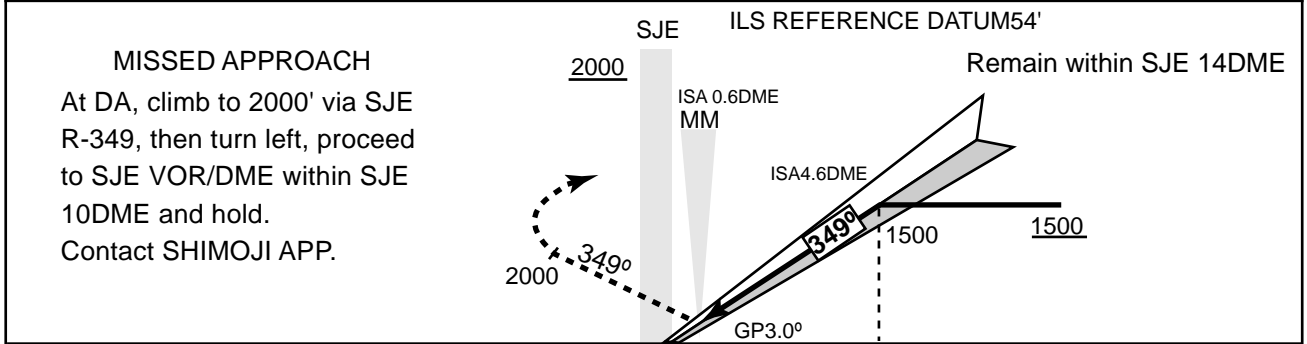
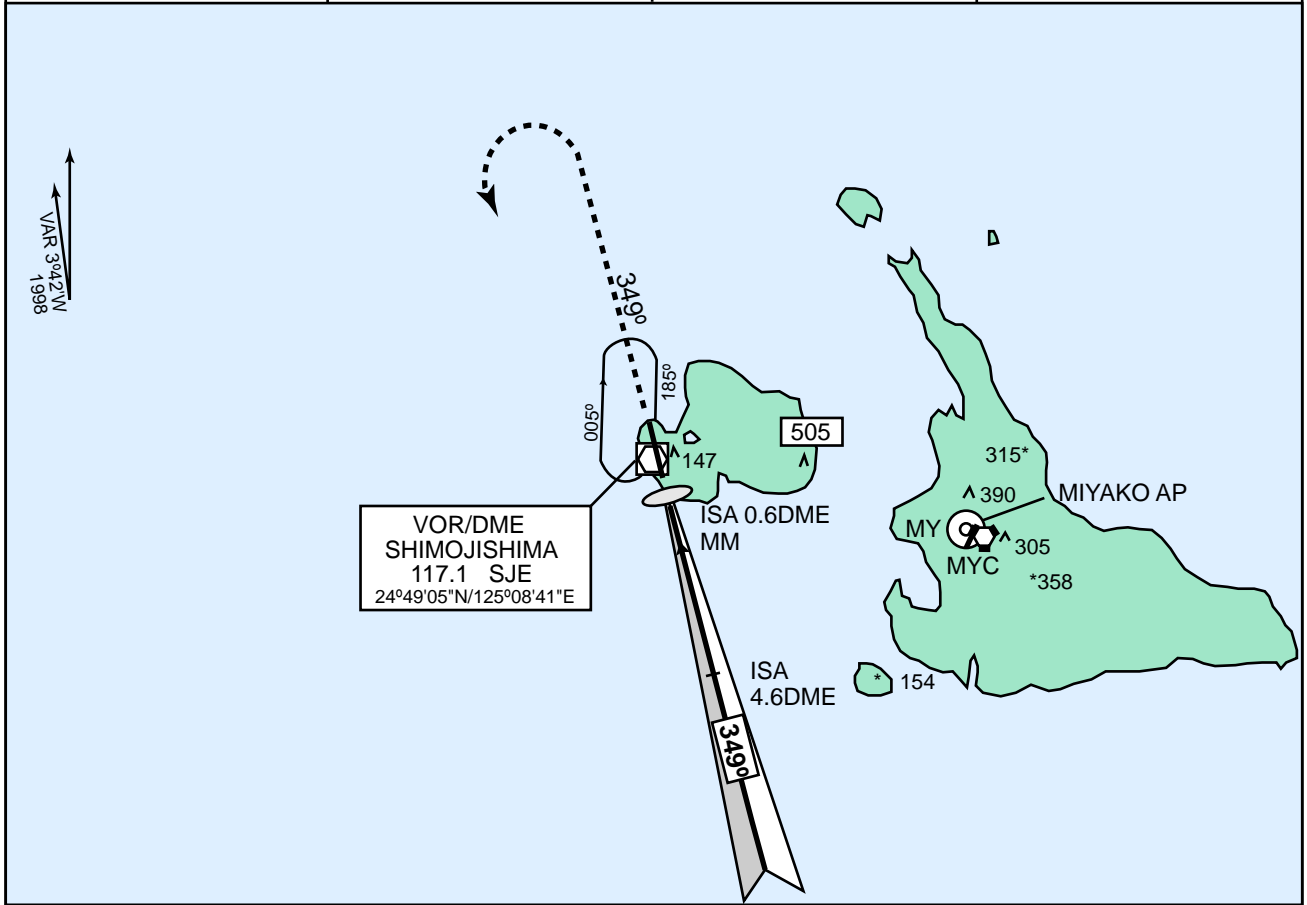
MINIMA		FIELD ELEV 25ft TDZ ELEV 15ft				
STA TO RWY 17					CIRCLING*	
ILS			(GP OUT)			
DA 254'			MDA 320'			
RTZL & RCLL AVBL	RTZL &/or RCLL OUT	PALS OUT	PALS AVBL	PALS OUT	MDA-VIS	
A					380' - 1600m	
B	RVR 550m	RVR 800m	RVR 1200m	RVR 1200m	RVR 1400m	480' - 1600m
C	VIS 800m	VIS 800m	VIS 1200m	VIS 1200m	VIS 1400m	480' - 2400m
D					RVR 1600m VIS 1600m	580' - 3200m

*Circling to West side of RWY only

RORS

SHIMOJISHIMA ILS RWY 35

SHIMOJI APP 120.3 - 121.2 - 125.0	ILS - LLZ 110.9 ISA ∴ ILS - GP 330.8 ILS - DME CH - 46	SHIMOJI TOWER 118.3 - 126.2 - 121.7	RADAR AVAILABLE
--------------------------------------	---	--	-----------------



MINIMA		FIELD ELEV 25ft TDZ ELEV 54ft			
STA TO RWY 35					CIRCLING*
ILS			(GP OUT)		
DA 254'			MDA 360'		
RTZL & RCLL AVBL	RTZL &/or RCLL OUT	PALS OUT	PALS AVBL	PALS OUT	MDA-VIS
A					380' - 1600m
B	RVR 550m	RVR 800m	RVR 1200m	RVR 1400m	480' - 1600m
C	VIS 800m	VIS 800m	VIS 1200m	VIS 1200m	480' - 2400m
D				RVR 1600m VIS 1600m	580' - 3200m

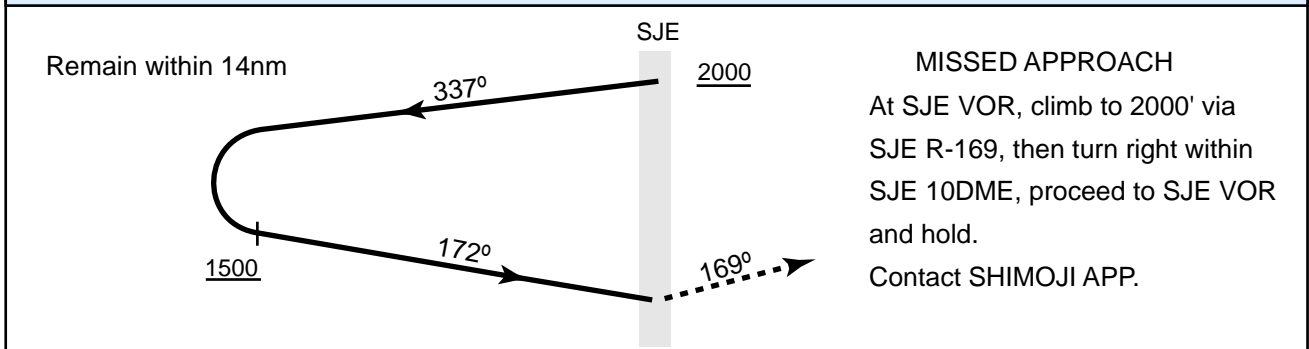
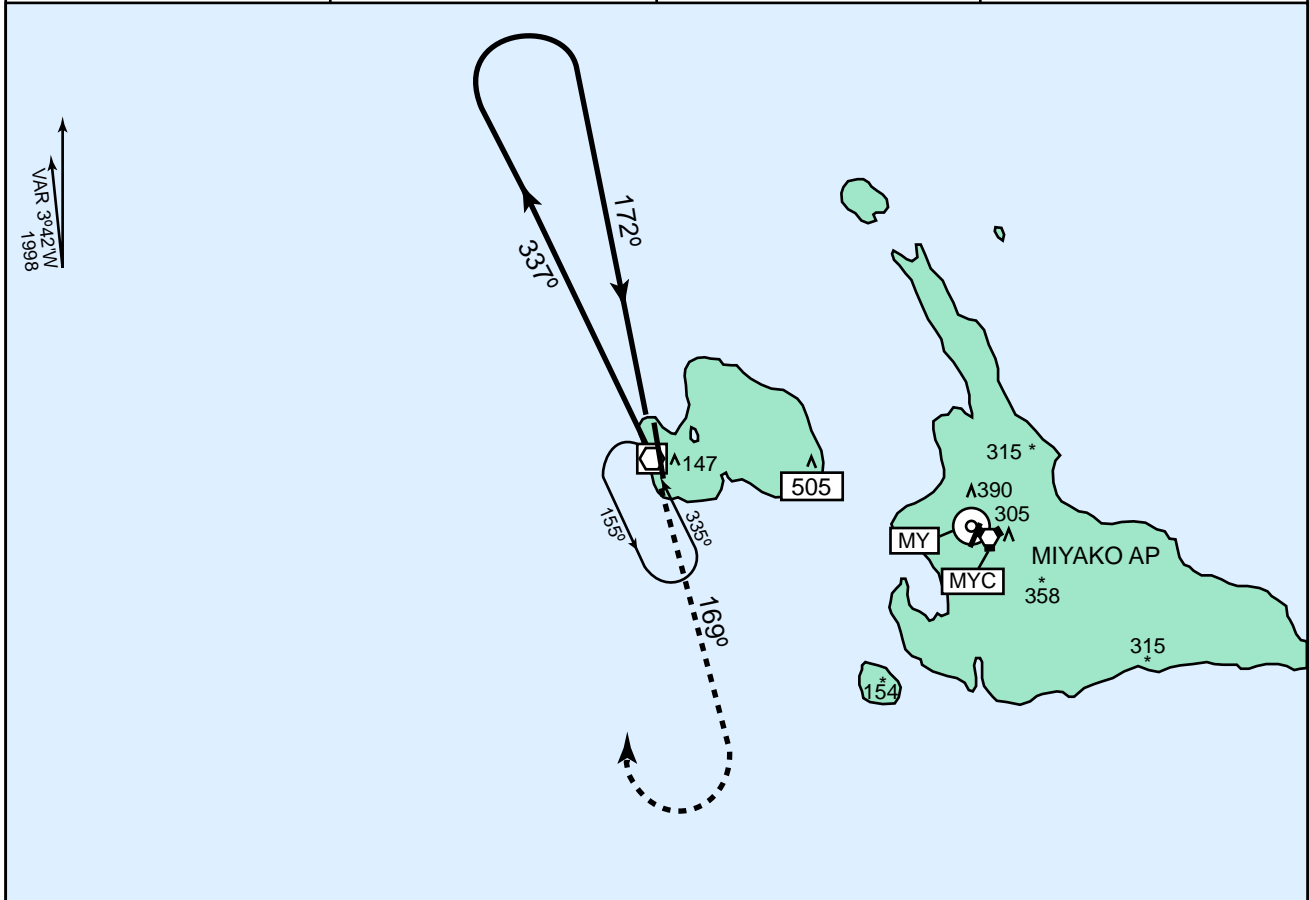
*Circling to West side of RWY only

(EFF : 20 APR 2000)

RORS

SHIMOJISHIMA VOR RWY 17

SHIMOJI APP 120.3 - 121.2 - 125.0	SHIMOJISHIMA VOR/DME 117.1 SJE --- CH-118 24°49'05"N/125°08'41"E	SHIMOJI TOWER 126.2 - 118.3 - 121.7	RADAR AVAILABLE CALL SHIMOJI APP
--------------------------------------	---	--	--



MINIMA		FIELD ELEV 25ft
	STA TO RWY 17 MDA 460'	*CIRCLING MDA-VIS
	PALS AVBL	PALS OUT
A	RVR 1200m	RVR 1600m
B	VIS 1200m	VIS 1600m
C		
D	RVR 1400m VIS 1400m	VIS 2200m

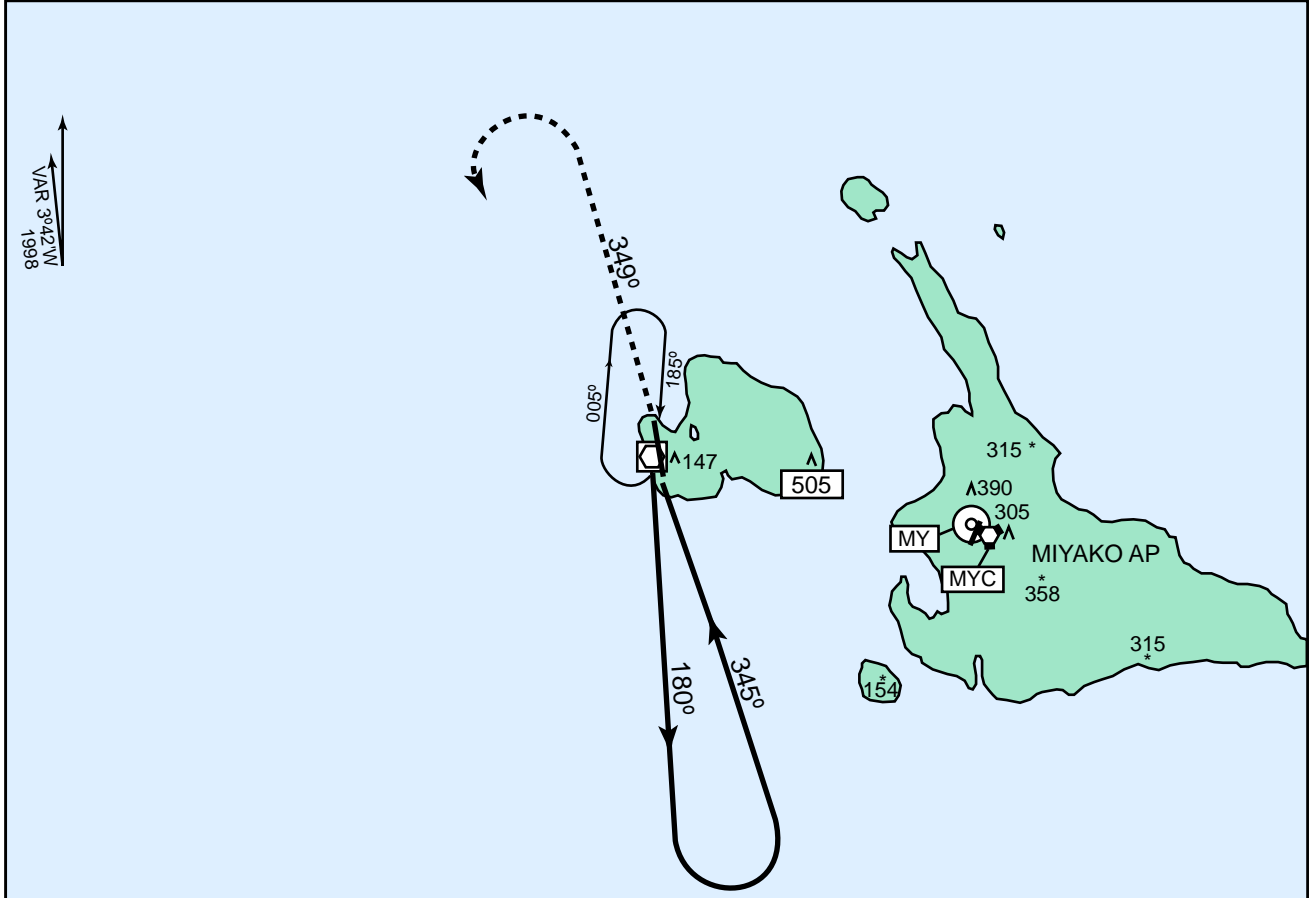
*Circling to West side of RWY only.

(EFF : 17 JUN 1999)

RORS

SHIMOJISHIMA VOR RWY 35

SHIMOJI APP 120.3 - 121.2 - 125.0	SHIMOJISHIMA VOR/DME 117.1 SJE --- CH-118 24°49'05"N/125°08'41"E	SHIMOJI TOWER 126.2 - 118.3 - 121.7	RADAR AVAILABLE CALL SHIMOJI APP
--------------------------------------	---	--	--



MISSED APPROACH
At SJE VOR, climb via SJE R-349 to 2000' then turn left within 10nm of SJE VOR, proceed to SJE VOR and hold. Contact SHIMOJI APP.

The diagram illustrates the missed approach procedure. It shows a vertical climb to 2000 feet at the SJE VOR. From 2000 feet, the aircraft turns left to 180 degrees. It then turns left to 345 degrees and finally left to 349 degrees. The diagram also indicates that the aircraft should remain within 14nm of the SJE VOR and descend to 1500 feet.

MINIMA		FIELD ELEV 25ft
STA TO RWY 35 MDA 460'		*CIRCLING MDA-VIS
PALS AVBL	PALS OUT	
A	RVR 1200m	460'-1600m
B	VIS 1200m	480'-1600m
C	RVR 1400m	480'-2400m
D	VIS 2000m	580'-3200m

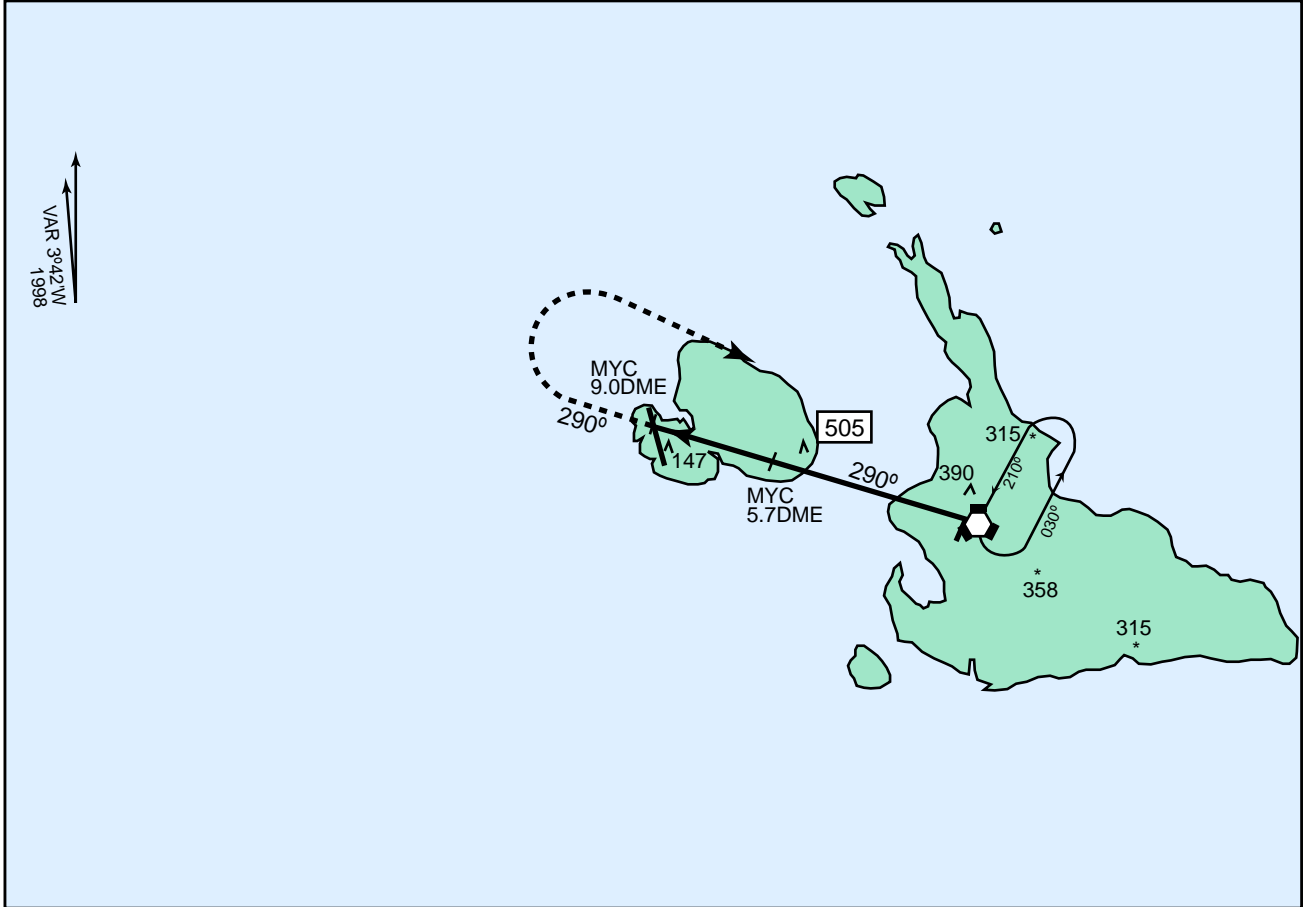
*Circling to West side of RWY only.

(EFF : 22 APR 1999)

RORS

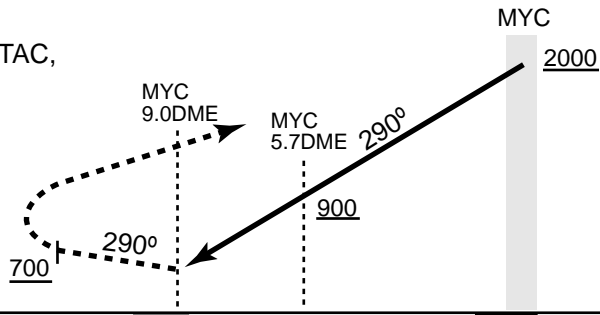
SHIMOJISHIMA VOR/DME A

<p>SHIMOJI APP 120.3 - 121.2 - 125.0</p>	<p>MIYAKOJIMA VORTAC 117.5 MYC $\equiv\equiv\equiv$ CH-122 24°46'58"N/125°18'05"E</p>	<p>SHIMOJI TOWER 126.2 - 118.3 - 121.7</p>	<p>RADAR AVAILABLE CALL SHIMOJI APP</p>
--	--	--	---



MISSED APPROACH

At 9.0DME after passing MYC VORTAC, climb via MYC R-290 to 700' within MYC 11DME, then turn right, climb to 2000', proceed to MYC VORTAC and hold. Contact SHIMOJI APP.



MINIMA		FIELD ELEV 25ft
	STA TO RWY	*CIRCLING MDA-VIS
A	-	540' - 1600m
B		540' - 2400m
C		580' - 3200m
D		

* CIRCLING to West side of RWY only.

(EFF : 22 APR 1999)

ANNIE ONE DEPARTURE

RWY 17 : Turn right,....

RWY 35 :

....Climb via SJE R-350 to ANNIE.

Cross SJE R-350/5DME at or below 7000FT or specified altitude and cross ANNIE at assigned or specified altitude.

BETTY ONE DEPARTURE

RWY 17 :

RWY 35 : Turn left,....

....Climb via SJE R-170 to BETTY.

Cross SJE R-170/20DME at or below 7000FT or specified altitude and cross BETTY at assigned or specified altitude.

TORII TWO DEPARTURE

RWY 17 : Turn left,....

RWY 35 : Turn right,....

....Climb via SJE R-090 to intercept and proceed via MY C R-060 to TORII (062DEG from MY NDB to OK NDB)

TORII ARC TWO DEPARTURE

RWY 17 : Turn right,....

RWY 35 :

....Climb via SJE R-021 to SJE 21DME (MY C R-358/22DME), turn right via MY C 25DME ARC to intercept and proceed via MY C R-060 to TORII (062DEG from MY NDB to OK NDB).

Cross SJE R-021/5DME at or below 7000FT or specified altitude cross MY C R-040 at assigned altitude or specified altitude.

JIEFA ARC ONE DEPARTURE

RWY 17 : Turn right,....

RWY 35 :

....Climb via SJE R-021 to SJE 21DME (MY C R-358/22DME), turn right via MY C 25DME ARC to intercept and proceed via MY C R-079 to JIEFA (079DEG from MY NDB to TEBEK).

Cross SJE R-021/5DME at or below 7000FT or specified altitude cross MY C R-040 at assigned altitude or specified altitude.

